

TEXAS TRANSPORTATION COMMISSION

BELL County

MINUTE ORDER

Page 1 of 1

WACO District

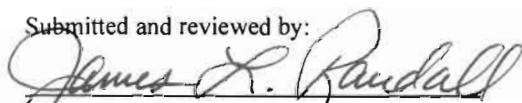
In BELL COUNTY, local officials have requested that a segment of US 190 be designated along a new location from northwest of Heidenheimer to southeast of Heidenheimer, a distance of approximately 2.4 miles, and the old location of US 190 through Heidenheimer be redesignated as BU 190-J. The new location roadway begins approximately 1.1 miles south of the intersection of FM 3117 and US 190 and returns to US 190 approximately one mile south of the intersection of FM 436 and the current location of US 190, as shown in Exhibit A.

Pursuant to Texas Transportation Code, §§201.103 and 221.001, the executive director has recommended that US 190 be designated on the state highway system on new location around Heidenheimer and that the old location be redesignated as BU 190-J.

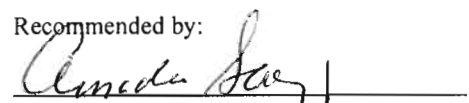
The Texas Transportation Commission (commission) finds that the designation of US 190 on a new location and redesignation of the existing location of US 190 as BU 190 will facilitate the flow of traffic, promote public safety, and maintain continuity of the state highway system and is necessary for the proper development and operation of the system.

IT IS THEREFORE ORDERED by the commission that US 190 be designated along a new location around Heidenheimer, a distance of approximately 2.4 miles, and that the old location of US 190 through Heidenheimer be redesignated as BU 190-J.

Submitted and reviewed by:

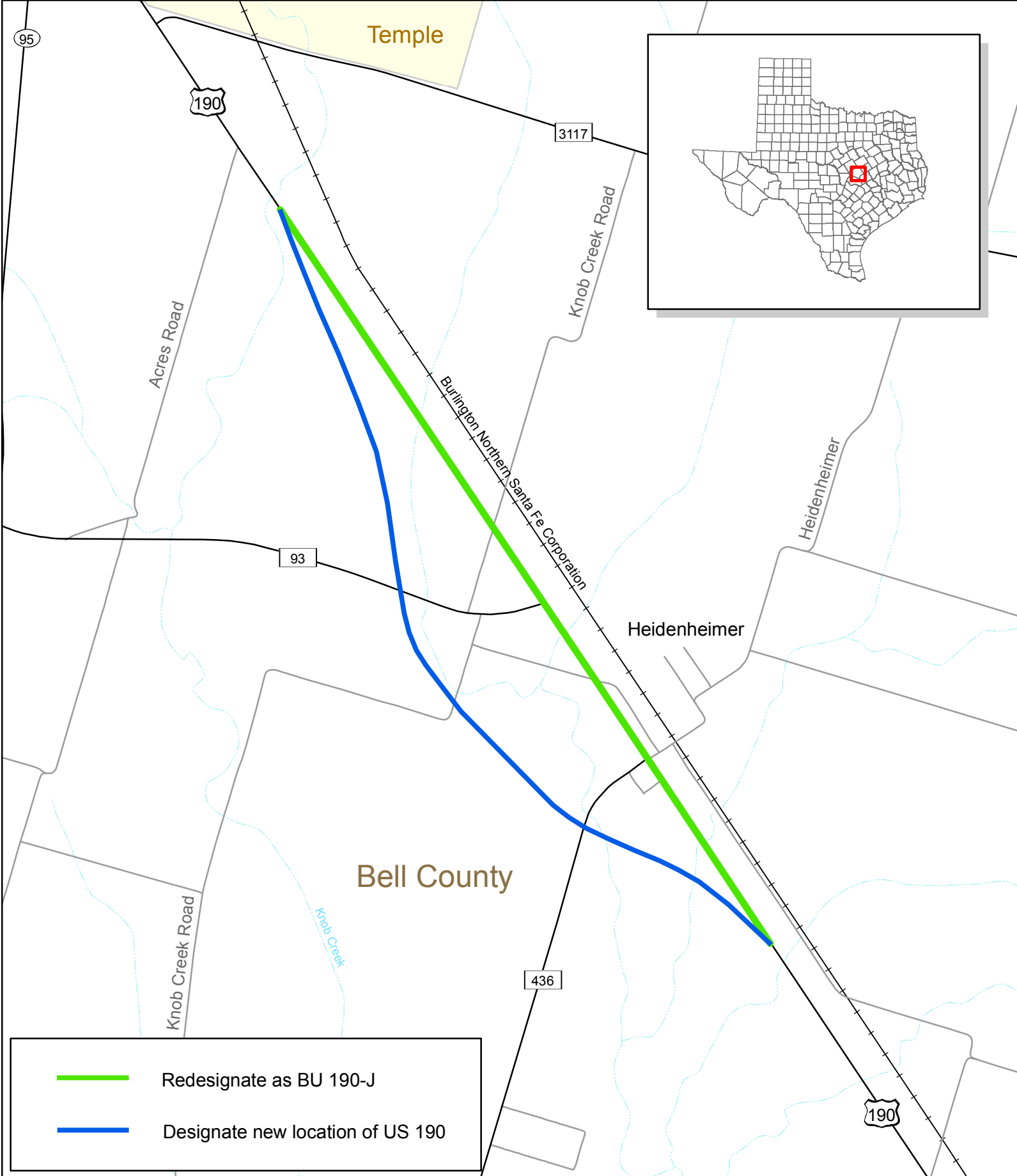

Director, Transportation Planning
and Programming Division



Recommended by:



Executive Director
112248 APR 29 10

Minute
Number

Date
Passed



	Redesignate as BU 190-J
	Designate new location of US 190



0 1,250 2,500
Feet

Texas Department of Transportation
 Transportation Planning and Programming Division
 Data Analysis, Mapping and Reporting Branch
 March 17, 2010

Copyright 2010
 Texas Department of Transportation
 Notice
 This map was produced for internal use
 within the Texas Department of Transportation.
 Accuracy is limited to the validity of available
 data as of December 31, 2009.

