

TEXAS TRANSPORTATION COMMISSION

MAVERICK AND EL PASO Counties

MINUTE ORDER

Page 1 of 1

LAREDO AND EL PASO Districts

In MAVERICK COUNTY, officials have requested the redesignation of State Highway Spur 16 (SS 16) in the city of Eagle Pass from US 277 to US 57 as State Highway Spur 216 (SS 216), as shown in Exhibit A.

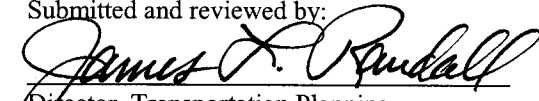
In EL PASO COUNTY officials have requested the redesignation of State Highway Spur 276 (SS 276) in the city of El Paso from SH 20 to SL 375 west of I-10 as SS 16, as shown in Exhibit B.

Pursuant to Texas Transportation Code, §§201.103 and 221.001, the executive director has recommended the redesignation of SS 16 in the city of Eagle Pass as SS 216, and the redesignation of SS 276 in the city of El Paso as SS 16.

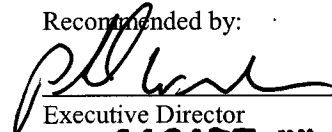
The Texas Transportation Commission (commission) finds that these redesignations will facilitate the flow of traffic, promote public safety, and maintain continuity of the state highway system and are necessary for the proper development and operation of the system.

IT IS THEREFORE ORDERED by the commission that SS 16 in Eagle Pass is redesignated as SS 216 from US 277 to US 57, approximately 0.9 mile; and SS 276 in El Paso is redesignated as SS 16 from SH 20 to SL 375, approximately 1.2 miles.

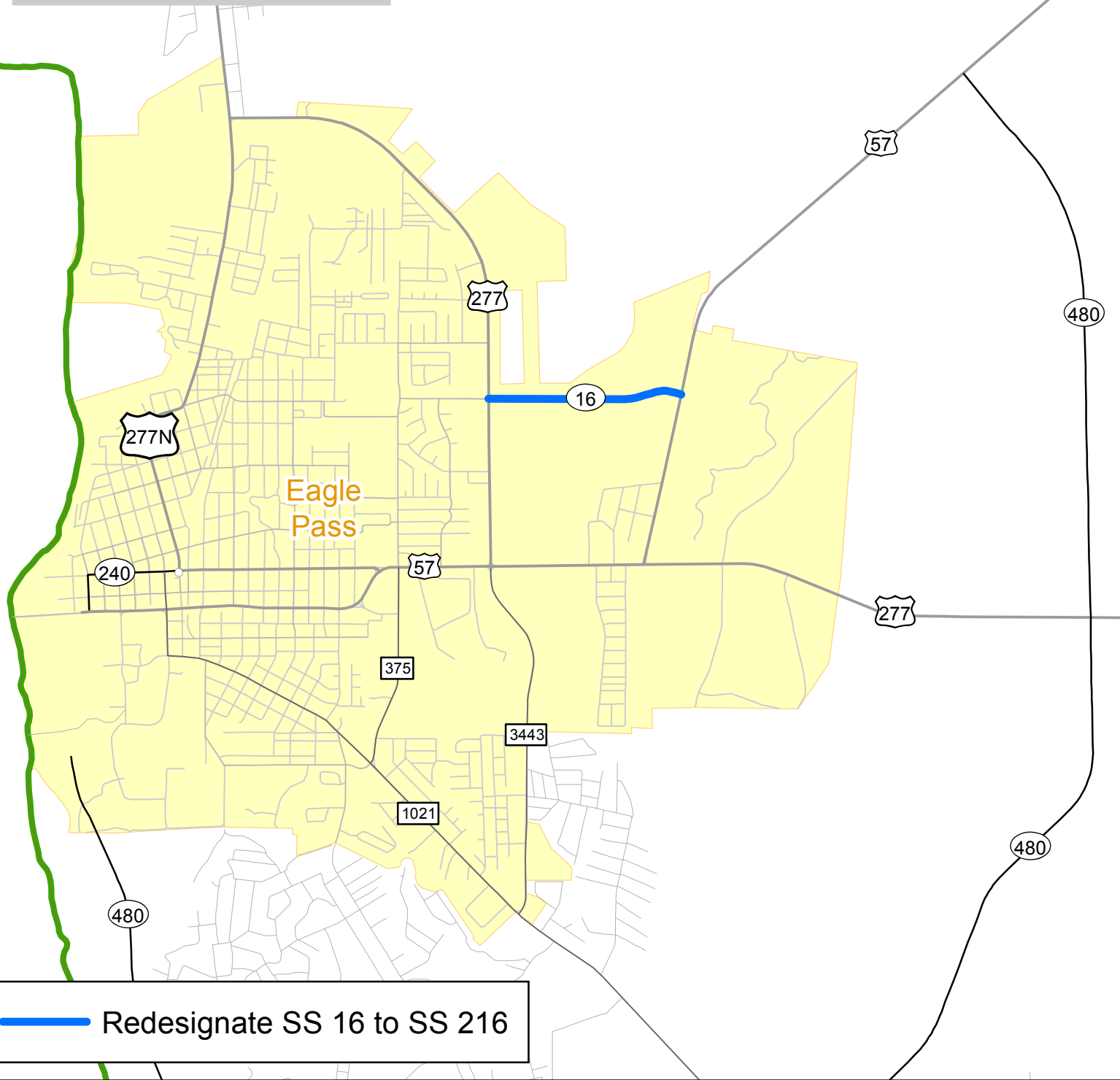
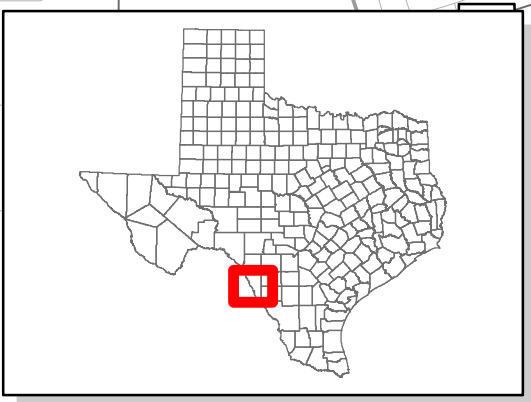
Submitted and reviewed by:



Director, Transportation Planning
and Programming Division

Recommended by:


Executive Director
113187 JUL 26 12

Minute Date
Number Passed

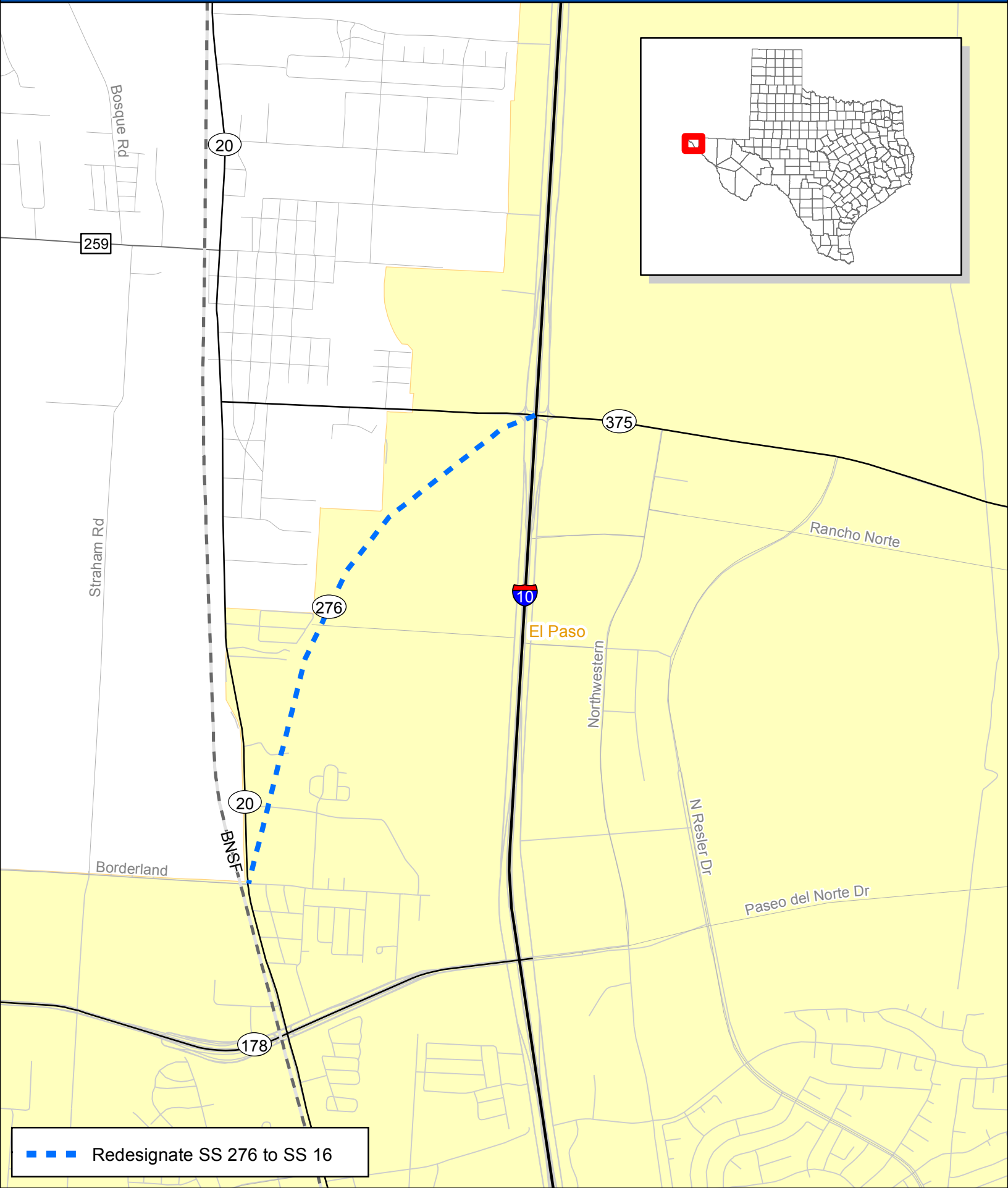
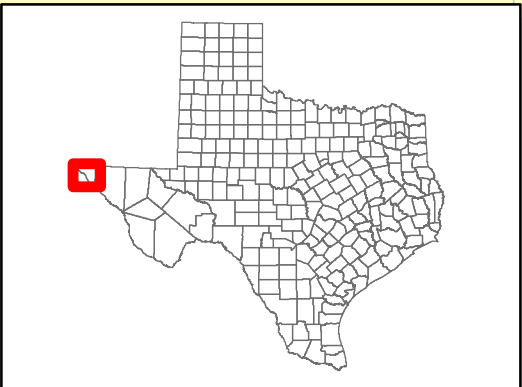


 Redesignate SS 16 to SS 216



0 0.25 0.5
Miles





■ ■ ■ Redesignate SS 276 to SS 16

