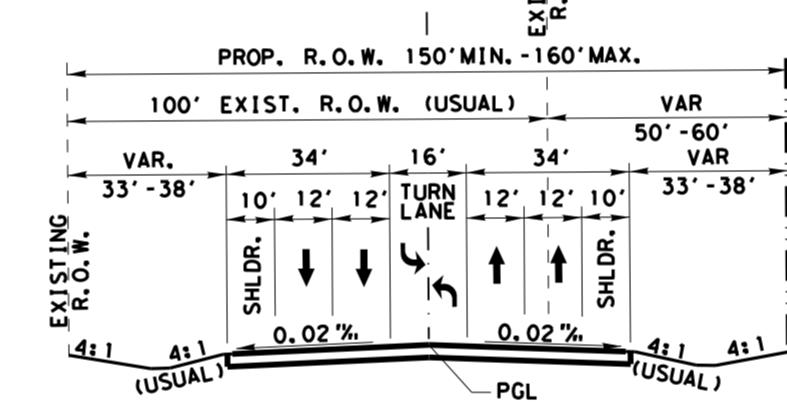


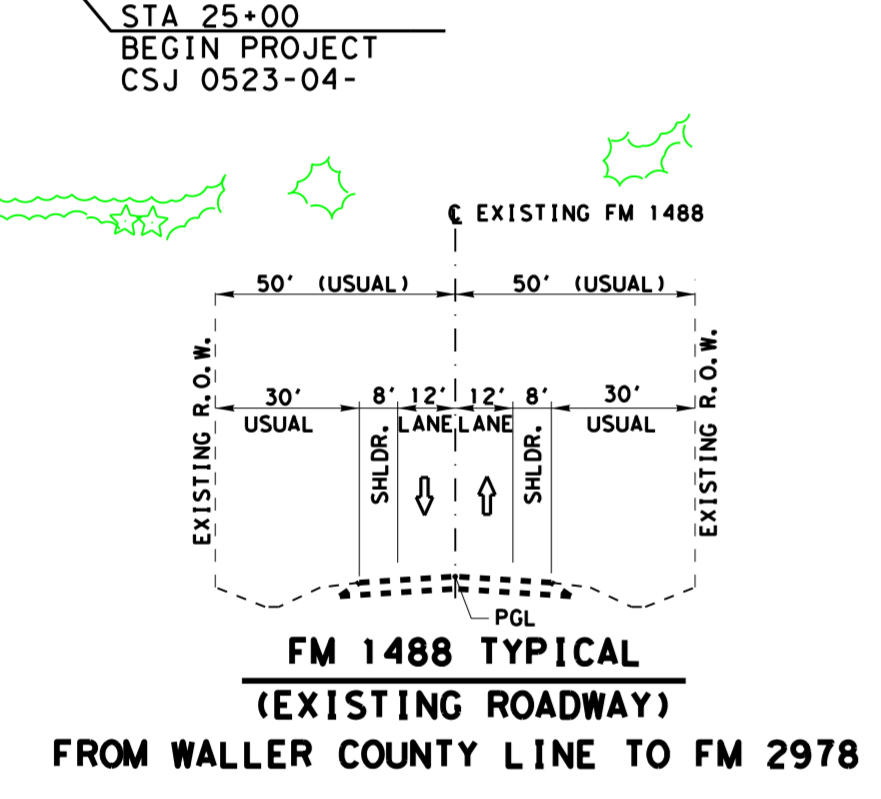
TEXAS DEPARTMENT OF TRANSPORTATION  
 HOUSTON DISTRICT  
 Schematic Layout  
 MONTGOMERY COUNTY  
 FM 1488  
 FROM WALLER COUNTY LINE  
 TO FM 2978  
 ORIGINAL APPROVED

**LEGEND**

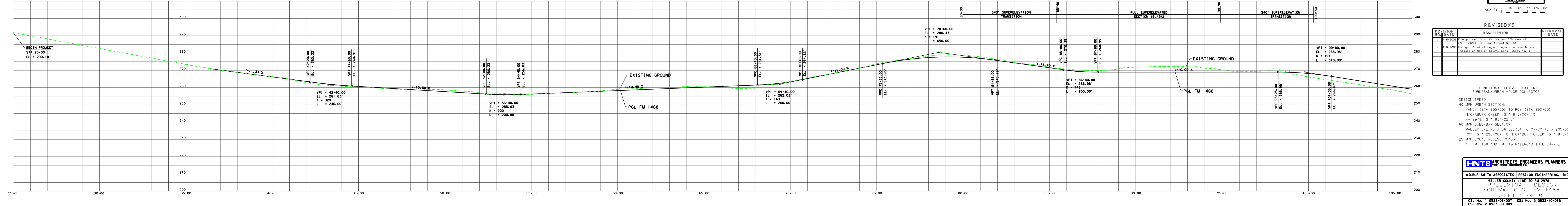
SYMBOL	LINE WT	COLOR	CODE
Main Lane	4	BLACK	1
Frontage Road and Ramp	4	BLACK	1
Proposed	4	BLACK	1
Existing to be removed	4	BLACK	1
Existing to remain	4	BLACK	1
Proposed	4	BLACK	1
Control of Access	4	BLACK	2
Prop Row	4	BLACK	2
Existing Row	4	BLACK	2
Center Line	4	BLACK	2
Planned	4	BLACK	2
Traffic Count Year Roadway	4	BLACK	2
Existing Lane Directional	4	BLACK	2
Proposed Lane Directional	4	BLACK	2
Direct Construction	4	BLACK	2
Proposed	4	BLACK	2
Paving	4	BLACK	2
Retaining Wall	4	BLACK	2
Structure	4	BLACK	2
Side Occupancy Vertical	4	BLACK	2
Overhead Signage	4	BLACK	2
Overhead Construction	4	BLACK	2
Edge of Travel Lane	4	BLACK	2
Edge of Travel Lane	4	BLACK	2



**FM 1488 TYPICAL SECTION  
(WITH 16' FLUSH MEDIAN)  
FROM WALLER COUNTY LINE  
TO LAKESHORE**



**FM 1488 TYPICAL  
(EXISTING ROADWAY)  
FROM WALLER COUNTY LINE TO FM 2978**



**NOT A BIDDING DOCUMENT**

TEXAS DEPARTMENT OF TRANSPORTATION  
 HOUSTON DISTRICT  
 SCALE: 0 50 100 150 200 250

**REVISIONS**

REVISION NO.	DATE	DESCRIPTION	APPROVAL DATE
1	10/11/2006	Change stationing to 25+00 to 105+00 and west of FM 2978 to FM 2978 (Station No. 25)	
2	10/11/2006	Change Point of Beginning to Joseph Road instead of Waller County Line (Station No. 1)	

**FUNCTIONAL CLASSIFICATION:**  
 SUBURBAN/URBAN MAJOR COLLECTOR  
**DESIGN SPEED:**  
 40 MPH URBAN SECTION:  
 YANCY (STA 205+00) TO ROY (STA 290+00)  
 NICKABURR CREEK (STA 813+00) TO  
 FM 2978 (STA 834+22.51)  
 60 MPH SUBURBAN SECTION:  
 WALLER C/L (STA 36+58.30) TO YANCY (STA 205+00)  
 ROY (STA 290+00) TO NICKABURR CREEK (STA 813+00)  
 25 MPH LOCAL ACCESS ROADS:  
 AT FM 1488 AND FM 149-RAILROAD INTERCHANGE

WILBUR SMITH ASSOCIATES EPSILON ENGINEERING, INC.  
 WALLER COUNTY LINE TO FM 2978  
 PRELIMINARY DESIGN  
 SCHEMATIC OF FM 1488  
 SHEET 1 OF 9  
 CSJ No. 1 0823-08-007 CSJ No. 3 0523-10-016  
 CSJ No. 2 0523-09-009