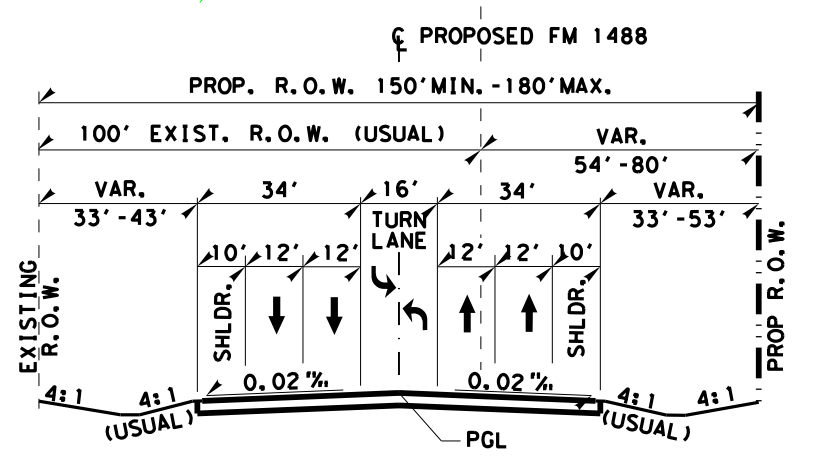
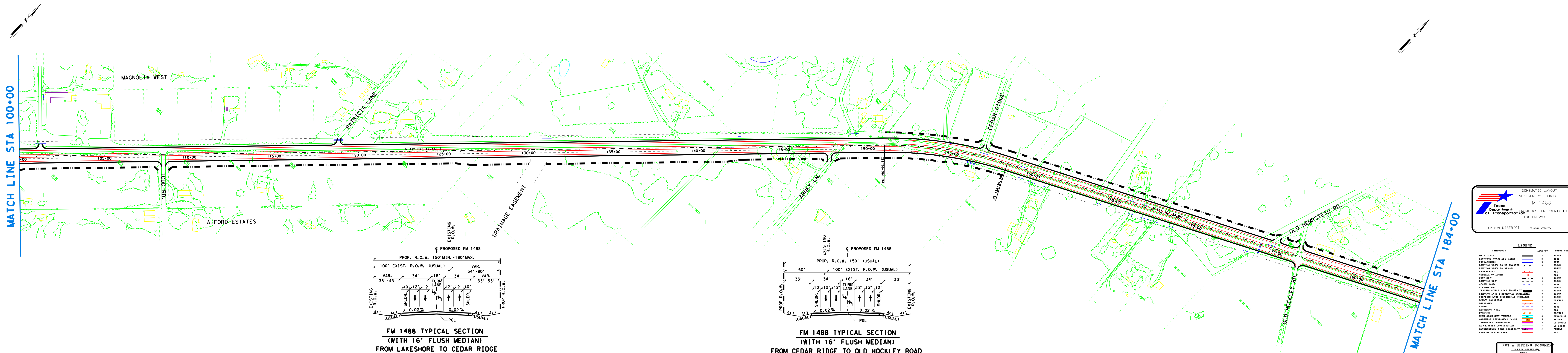
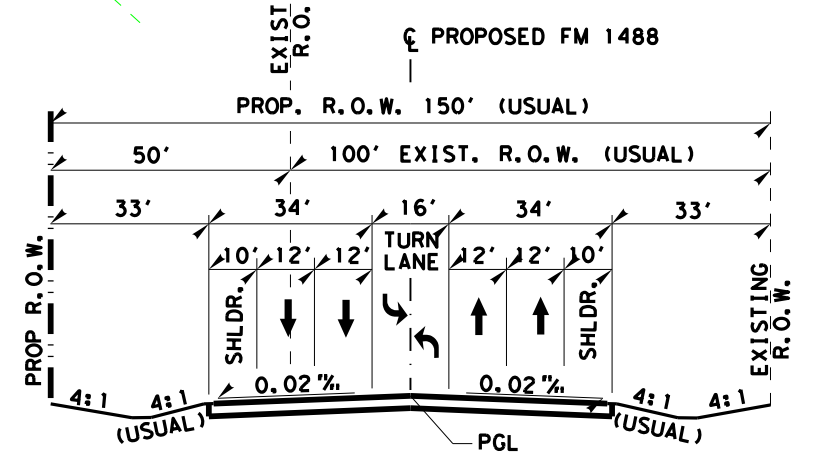


MATCH LINE STA 100+00

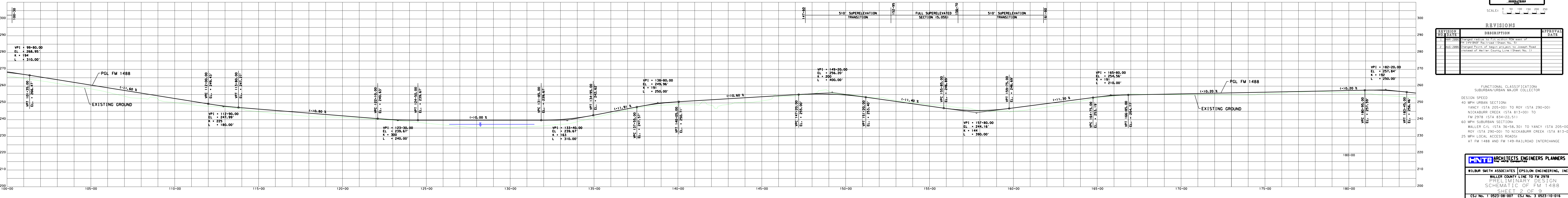
MATCH LINE STA 184+00



**FM 1488 TYPICAL SECTION  
(WITH 16' FLUSH MEDIAN)  
FROM LAKESHORE TO CEDAR RIDGE**



**FM 1488 TYPICAL SECTION  
(WITH 16' FLUSH MEDIAN)  
FROM CEDAR RIDGE TO OLD HOCKLEY ROAD**



SCHEMATIC LAYOUT  
MONTGOMERY COUNTY  
FM 1488  
Texas Department of Transportation  
WALLER COUNTY LINE TO FM 2978  
HOUSTON DISTRICT

SYMBOL	LINE WT.	COLOR CODE
MAIN LANE	4	BLACK
SHOULDER	2	BLACK
EXISTING ROAD AND BANK	2	BLACK
EXISTING ROAD TO BE REMOVED	2	BLACK
EXISTING ROAD TO REMAIN	2	GREEN
PROP ROW	2	BLACK
CONTROL OF ACCESS	2	RED
EXISTING ROW	2	BLACK
ACCESS ROAD	2	BLACK
PLANNED	2	GREEN
PLANNED COUNTY TRAIL (ROAD OUT)	2	BLACK
EXISTING LAND SUBSTANTIAL IMPROVEMENT	2	BLACK
PROPOSED LAND SUBSTANTIAL IMPROVEMENT	2	BLACK
DIRECT CONSTRUCTION	2	ORANGE
CONTRACTOR	2	RED
EXISTING WALL	2	RED
STRIPING	2	ORANGE
NEW SECONDARY VEHICLE	2	ORANGE
OFFROAD DRIVEWAY LINES	2	ORANGE
TEMPORARY CONSTRUCTION	2	ORANGE
NEW UNDER CONSTRUCTION	2	ORANGE
REWORKED FROM PREVIOUS WORK	2	ORANGE
EDGE OF TRAVEL LANE	2	RED

NOT A BIDDING DOCUMENT  
JAL KAWAZDAR  
10/25/2008  
REVISED

SCALE: 0 50 100 150 200 250

REVISION NO.	DATE	DESCRIPTION	APPROVAL DATE
1	10/25/2008	Change radius to fit within ROW east of NICKABURR CREEK (STA 813+00) TO FM 2978 (STA 834+22.51)	
2	10/25/2008	Change Point of Begin project to Joseph Road instead of Waller County Line (Sheet No. 1)	

FUNCTIONAL CLASSIFICATION:  
SUBURBAN/URBAN MAJOR COLLECTOR

DESIGN SPEED  
40 MPH URBAN SECTION:  
YANCY (STA 205+00) TO ROY (STA 290+00)  
NICKABURR CREEK (STA 813+00) TO  
FM 2978 (STA 834+22.51)

60 MPH SUBURBAN SECTION:  
WALLER C/L (STA 36+58.30) TO YANCY (STA 205+00)  
ROY (STA 290+00) TO NICKABURR CREEK (STA 813+00)  
25 MPH LOCAL ACCESS ROADS  
AT FM 1488 AND FM 149-RAILROAD INTERCHANGE

**CH2M HILL** ARCHITECTS ENGINEERS PLANNERS  
The Hill Companies

WILBUR SMITH ASSOCIATES | EPSILON ENGINEERING, INC.

WALLER COUNTY LINE TO FM 2978  
PRELIMINARY DESIGN  
SCHEMATIC OF FM 1488  
SHEET 2 OF 9  
CSJ No. 1 0523-08-007 CSJ No. 3 0523-10-016  
CSJ No. 2 0523-09-009