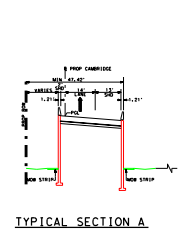


NOT A BIDDING DOCUMENT
 HAROLD S. SCHEFFLER III, P.E.
 TEXAS REGISTRATION NUMBER
 312/2013

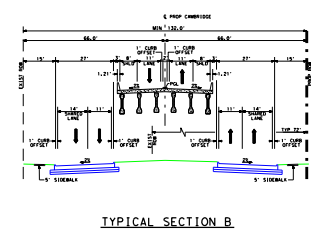
SCALE: 0 100 200 300 400

| SYMBOL | LINE WT. | COLOR | CODE |
|-------------------------------------|----------|-----------|------|
| ROADWAY | 1 | TURQUOISE | 101 |
| BRIDGE | 1 | BLACK | 102 |
| RAIL LINE | 1 | BLACK | 103 |
| PROPOSED ROADS AND RAMP | 3 | BLUE | 104 |
| INDICATORS | 3 | BLUE | 105 |
| EXISTING ROW TO BE REMOVED | 2 | BLACK | 106 |
| EXISTING ROW TO REMAIN | 2 | GREEN | 107 |
| BOUNDARY | 2 | RED | 108 |
| CONTROL OF ACCESS | 2 | RED | 109 |
| PROP ROW | 2 | BLACK | 110 |
| EXISTING ROW | 2 | BLACK | 111 |
| TEMPORARY CONSTRUCTION EXISTENT | 2 | RED | 112 |
| ACCESS ROAD | 2 | BLUE | 113 |
| FLAMMABLE | 2 | RED | 114 |
| TRAFFIC COUNT YEAR (2000) DIV | 2 | BLACK | 115 |
| EXISTING LANE DIRECTIONAL INDICATOR | 2 | BLACK | 116 |
| PROPOSED LANE DIRECTIONAL INDICATOR | 2 | BLACK | 117 |
| RETAINING WALL | 4 | RED | 118 |
| STREET | 4 | ORANGE | 119 |
| TRAFFIC BARRIER | 4 | BROWN | 120 |
| BRIDGE APPROACH | 4 | RED | 121 |
| BRIDGE DECK | 4 | RED | 122 |
| WATER | 4 | GREY | 204 |
| SANITARY | 4 | GREY | 205 |
| OVERHEAD POWERLINE | 4 | GREY | 206 |
| UNDERGROUND ELECTRIC | 4 | GREY | 207 |
| UNDERGROUND TELEPHONE | 4 | GREY | 208 |
| UNDERGROUND TELEPHONE | 4 | GREY | 209 |
| PROPOSED DETENTION LOCATION | 4 | BLUE | 1 |

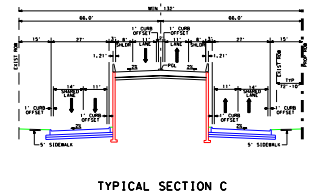
| SYMBOL | LINE WT. | COLOR | CODE |
|----------------------------------|----------|-------|------|
| PROP. PCL | 1 | BLACK | 1 |
| EXIST. PCL | 1 | BLACK | 2 |
| EXISTING GROUND | 1 | BLACK | 3 |
| 100 YEAR WATER SURFACE ELEVATION | 1 | BLUE | 4 |



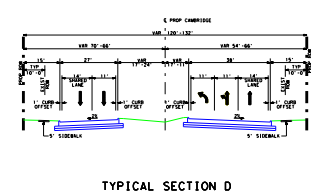
TYPICAL SECTION A



TYPICAL SECTION B

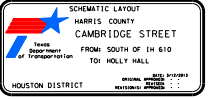
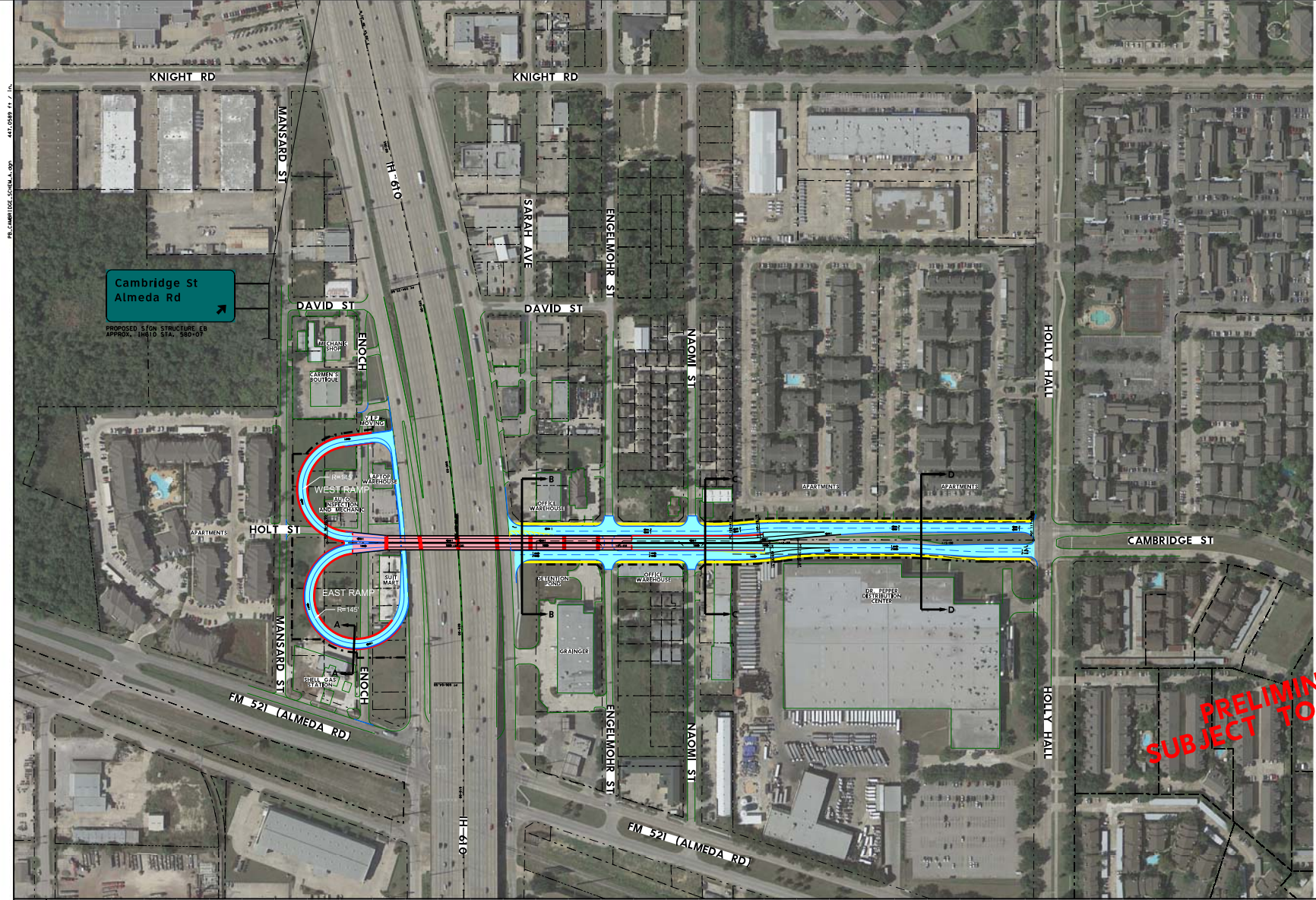
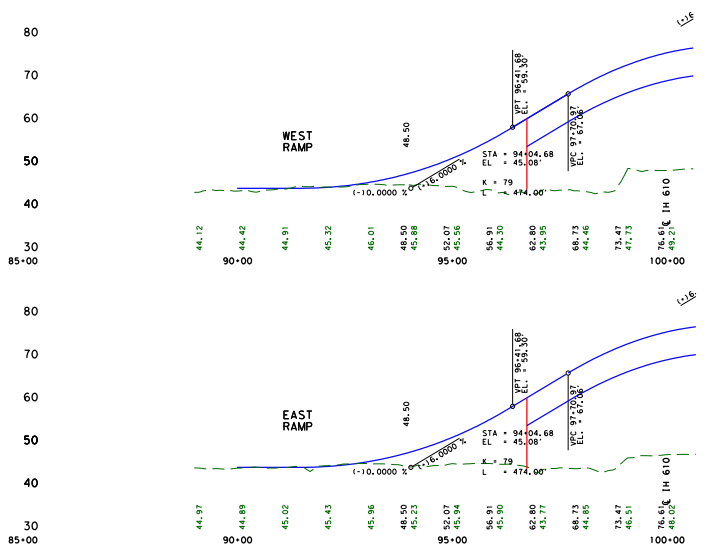


TYPICAL SECTION C



TYPICAL SECTION D

**PRELIMINARY
SUBJECT TO CHANGE**



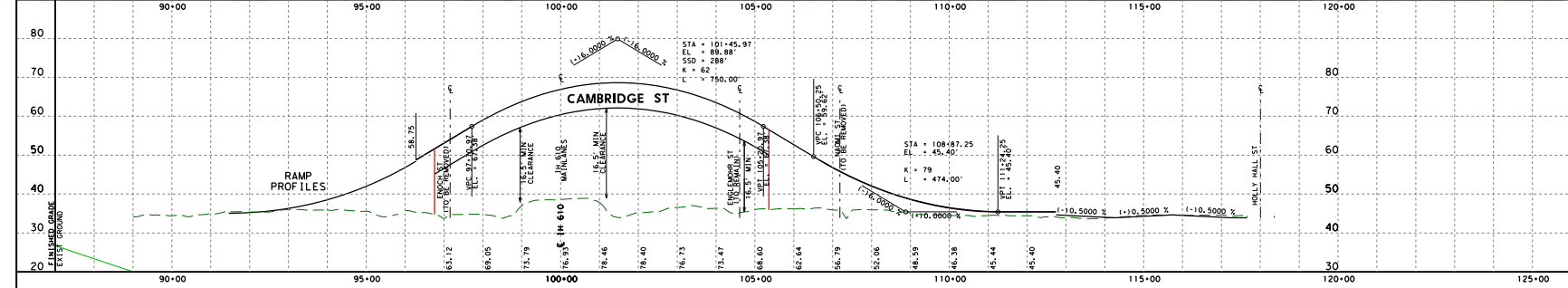
NOT A BIDDING DOCUMENT
 HAROLD S. SCHEFFLER III, P.E.
 TEXAS REGISTRATION NUMBER
 312/2013

SCALE: 0 100 200 300 400

| SYMBOL | LINE WT. | COLOR | CODE |
|-------------------------------------|----------|-----------|------|
| ROADWAY | 1 | TURQUOISE | 101 |
| BRIDGE | 1 | BLACK | 102 |
| RAIL LINE | 1 | BLACK | 103 |
| PROPOSED ROADS AND RAMP | 3 | BLUE | 104 |
| INDICATORS | 3 | BLUE | 105 |
| EXISTING ROW TO BE REMOVED | 2 | BLACK | 106 |
| EXISTING ROW TO REMAIN | 2 | GREEN | 107 |
| BOUNDARY | 2 | RED | 108 |
| CONTROL OF ACCESS | 2 | RED | 109 |
| PROP ROW | 2 | BLACK | 110 |
| EXISTING ROW | 2 | BLACK | 111 |
| TEMPORARY CONSTRUCTION EXISTENT | 2 | RED | 112 |
| ACCESS ROAD | 2 | BLUE | 113 |
| FLAMMABLE | 2 | RED | 114 |
| TRAFFIC COUNT YEAR (2000) DIV | 2 | BLACK | 115 |
| EXISTING LANE DIRECTIONAL INDICATOR | 2 | BLACK | 116 |
| PROPOSED LANE DIRECTIONAL INDICATOR | 2 | BLACK | 117 |
| RETAINING WALL | 4 | RED | 118 |
| STREET | 4 | ORANGE | 119 |
| TRAFFIC BARRIER | 4 | BROWN | 120 |
| BRIDGE APPROACH | 4 | RED | 121 |
| BRIDGE DECK | 4 | RED | 122 |
| WATER | 4 | GREY | 204 |
| SANITARY | 4 | GREY | 205 |
| OVERHEAD POWERLINE | 4 | GREY | 206 |
| UNDERGROUND ELECTRIC | 4 | GREY | 207 |
| UNDERGROUND TELEPHONE | 4 | GREY | 208 |
| UNDERGROUND TELEPHONE | 4 | GREY | 209 |
| PROPOSED DETENTION LOCATION | 4 | BLUE | 1 |

| SYMBOL | LINE WT. | COLOR | CODE |
|----------------------------------|----------|-------|------|
| PROP. PCL | 1 | BLACK | 1 |
| EXIST. PCL | 1 | BLACK | 2 |
| EXISTING GROUND | 1 | BLACK | 3 |
| 100 YEAR WATER SURFACE ELEVATION | 1 | BLUE | 4 |

**PRELIMINARY
SUBJECT TO CHANGE**



Texas Department of Transportation
 © 2013
PARSONS BRINCKERHOFF
 16285 Park Ten Place, Suite 400
 Houston, TX 77084 TBPE • 2263

IDC
 Planners-Engineers-Program Managers
 11111 Wilcrest Green, Suite 250
 Houston, Texas 77042
 IDC INC. F-8825

**SCHEMATIC LAYOUT
PREFERRED OPTION
CAMBRIDGE STREET
SOUTH OF IH 610 TO HOLLY HALL**
 STATION 89+00 TO STATION 118+00
 SHEET 1 OF 1

Texas Department of Transportation
 © 2013
PARSONS BRINCKERHOFF
 16285 Park Ten Place, Suite 400
 Houston, TX 77084 TBPE • 2263

IDC
 Planners-Engineers-Program Managers
 11111 Wilcrest Green, Suite 250
 Houston, Texas 77042
 IDC INC. F-8825

**SCHEMATIC LAYOUT
PREFERRED OPTION
CAMBRIDGE STREET
SOUTH OF IH 610 TO HOLLY HALL**
 STATION 89+00 TO STATION 118+00
 SHEET 1 OF 1