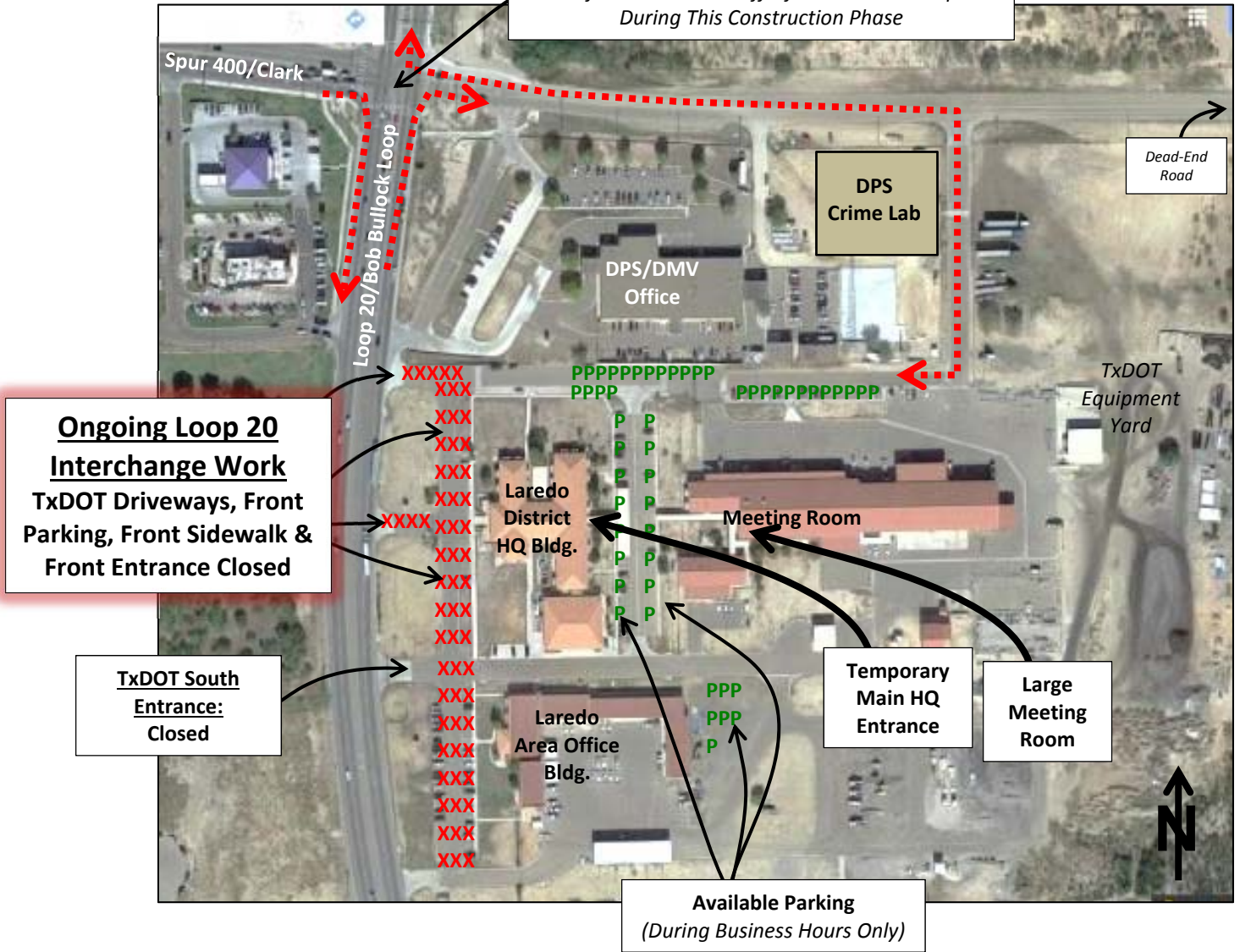


Construction Detour For Entry Into the TxDOT Laredo District Headquarters Offices

No Left Turns Onto or Off Of Southbound Loop 20
During This Construction Phase



Ongoing Loop 20 Interchange Work
TxDOT Driveways, Front Parking, Front Sidewalk & Front Entrance Closed

TxDOT South Entrance: Closed

Available Parking
(During Business Hours Only)

(Current As Of 8/5/16)