

FED. ROAD DIST. NO.	STATE	FEDERAL AID PROJECT NO.	ROUTE NO.
6	TEXAS	1-820-4(21)449	1
STATE DIST. NO.	COUNTY	STATE CONTROL NO.	NUMBER
2	TARRANT	8-13-34	1-820

STATE OF TEXAS  
STATE HIGHWAY DEPARTMENT

PLAN OF PROPOSED  
RIGHT OF WAY PROJECT

INTERSTATE LOOP 820

TARRANT COUNTY

ACCOUNT NO. 9002-8-8

PROJECT NO. 1-820-4(21)449

FROM: PRESENT STATE HIGHWAY 183, NORTH

TO: PROPOSED LOCATION STATE HIGHWAY 183

PLAN SCALE: AS SHOWN

NET LENGTH OF PROJECT = 10,090.72 FT. = 1.911 MI.

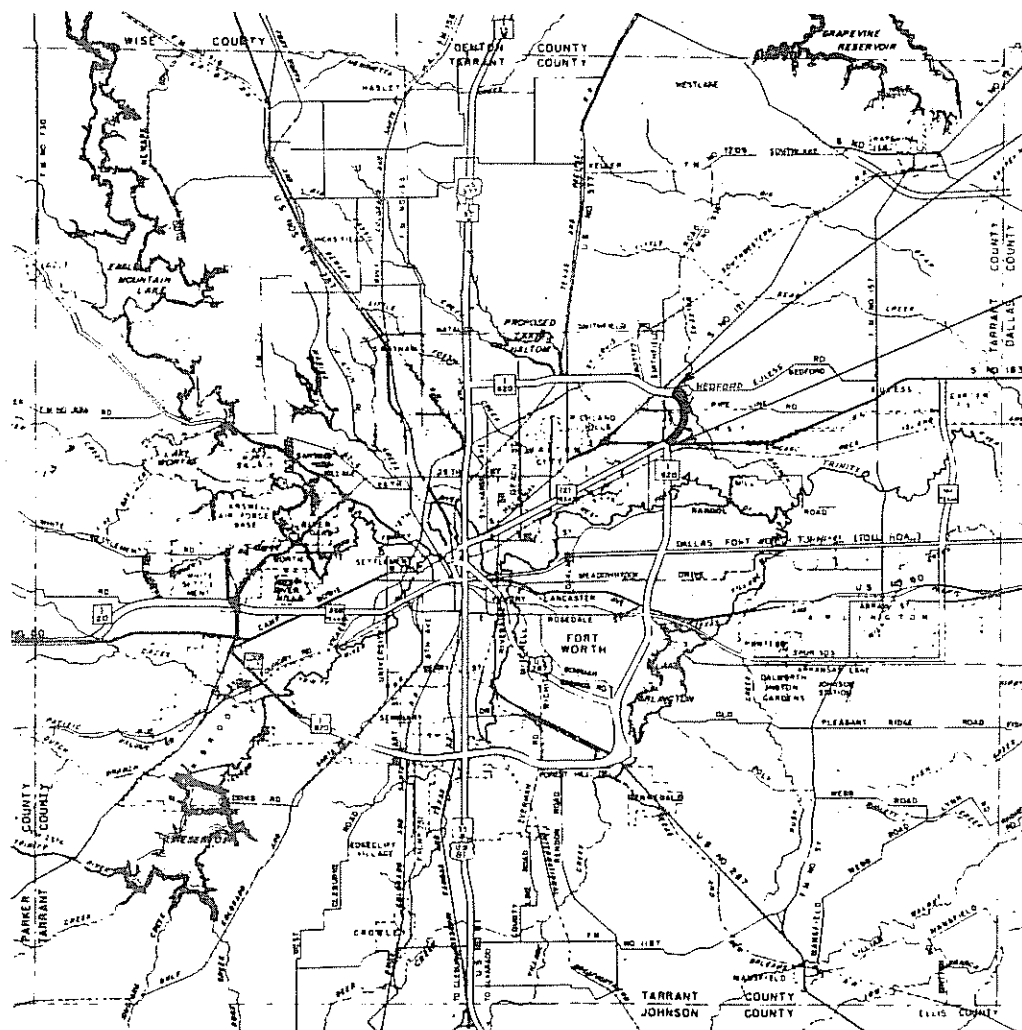
FINAL MAP  
PROJECT DESIGNATOR 7170

END PROJECT 1-820-4(21)449  
END ACCOUNT 9002-8-8  
STA. 987+06.40

= BEGIN PROJECT 1-820-4(13)451  
BEGIN ACCOUNT 9002-8-9  
STA. 987+06.40

BEGIN PROJECT 1-820-4(21)449  
BEGIN ACCOUNT 9002-8-8  
STA. 798+23.02

= END PROJECT 1-820-4(15)447  
END ACCOUNT 9002-8-7  
STA. 798+23.02



- CONVENTIONAL SIGNS
- RIGHT OF WAY LINE
  - PROPERTY LINE
  - COUNTY LINE
  - CONTROL OF ACCESS LINE
  - SURVEY LINE
  - FENCE
  - POWER LINE
  - TELEPHONE OR TELEGRAPH
  - RAILROAD
  - BRIDGE OR CULVERT
  - CITY LIMITS

EQUATION: STA. 886+20.14 BACK = STA. 1000+00 FWD.  
NO EXCEPTIONS

LAYOUT SCALE: 1 IN. = 3 MILES



CORRECT JAN 5 1968

B. P. Stewart  
DISTRICT ROW ENGINEER

APPROVED 1-5 1968

R. W. Brook  
DISTRICT ENGINEER

DEPARTMENT OF COMMERCE  
BUREAU OF PUBLIC ROADS

APPROVED: \_\_\_\_\_  
DIVISION ENGINEER

DATE: \_\_\_\_\_

SOLOMON HAYWORTH SURVEY ABST. 710

①  
 Srst. Four O'Henry, et al  
 Deed  
 Vol. 3519 Page 111  
 West Of Booth Calloway Road  
 0.267 ACRES  
 Remainder Left Side 12.7 Acres ±

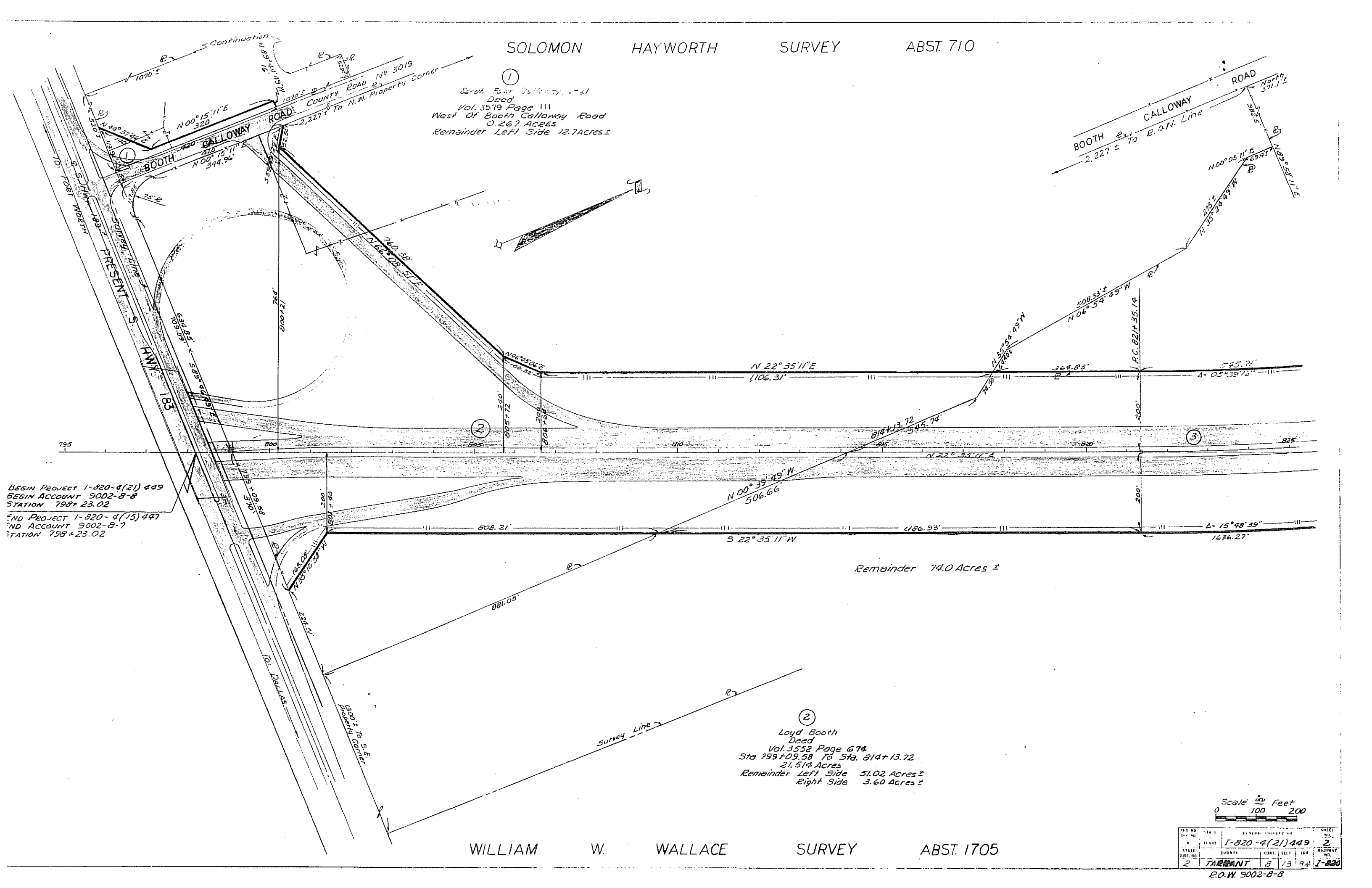
②  
 Loyd Booth  
 Deed  
 Vol. 3552 Page 674  
 Sta 799+09.58 To Sta. 814+13.72  
 21.514 Acres  
 Remainder Left Side 51.02 Acres ±  
 Right Side 3.60 Acres ±

WILLIAM W. WALLACE SURVEY ABST. 1705

BEGIN PROJECT 1-820-4(21) 449  
 BEGIN ACCOUNT 9002-8-8  
 STATION 798+23.02  
 END PROJECT 1-820-4(15) 447  
 END ACCOUNT 9002-8-7  
 STATION 798+23.02

Scale  $\frac{1}{2}$  Feet  
 0 100 200

FED. PROJ. NO.	STATE	COUNTY	CONTRACT NO.	SHEET NO.
	2	TARRANT	8 13 94	2
R.O.W. 9002-8-8				



SOLOMON

HAYWORTH

SURVEY

ABST. 710

3

14d S. Harris & G.T. Owen  
Deed  
Vol. 3479 Page 647  
Sta. 814+13.72 To Sta. 836+86.96  
20.940 Acres  
Remainder Left Side 3.5 Acres ±  
Right Side 14.0 Acres ±

5

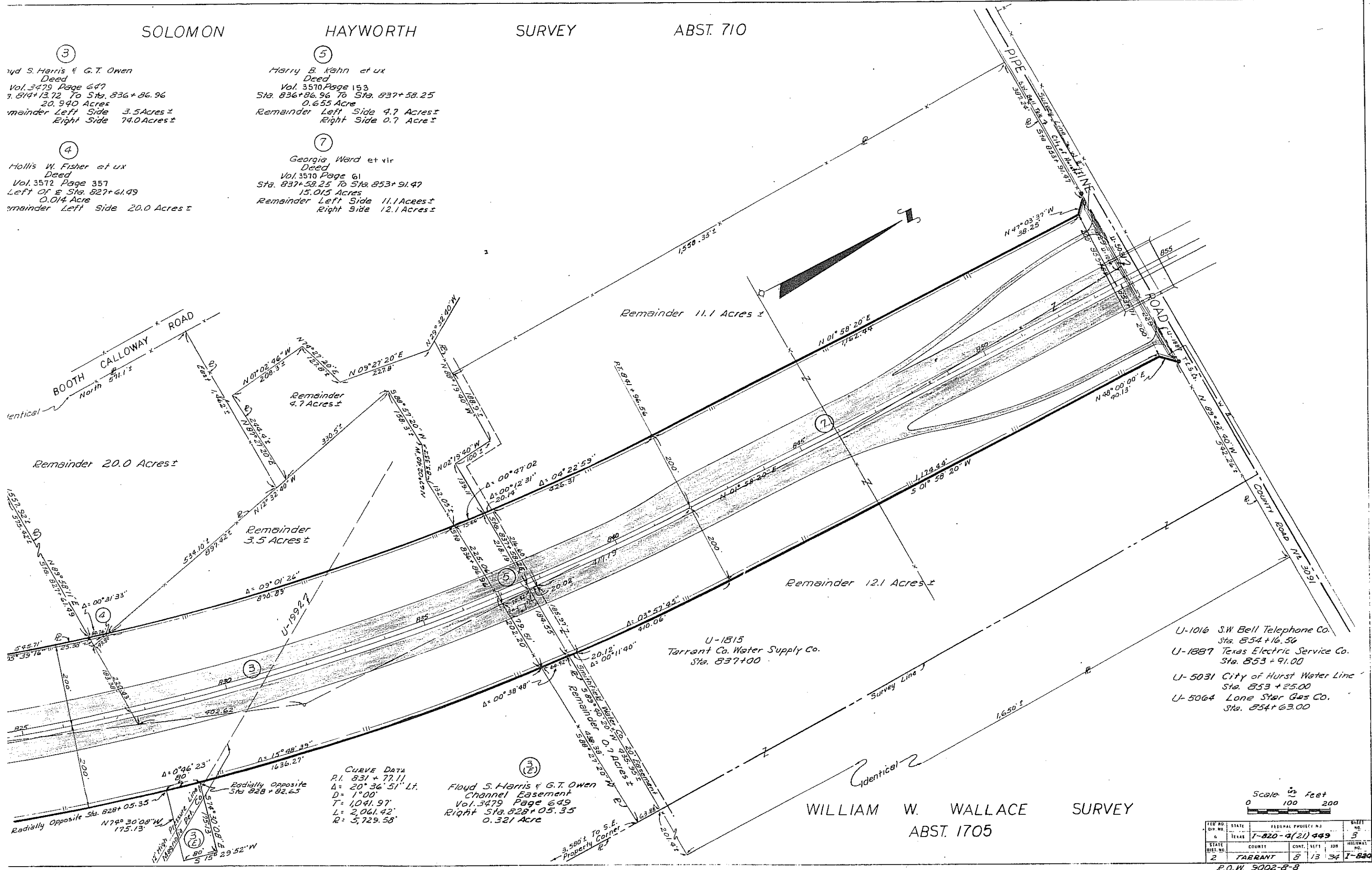
Harry B. Kahn et ux  
Deed  
Vol. 3510 Page 153  
Sta. 836+86.96 To Sta. 837+58.25  
0.655 Acre  
Remainder Left Side 4.7 Acres ±  
Right Side 0.7 Acres ±

4

Hollis W. Fisher et ux  
Deed  
Vol. 3512 Page 357  
Left Of & Sta. 827+61.49  
0.014 Acre  
Remainder Left Side 20.0 Acres ±

7

Georgia Ward et vir  
Deed  
Vol. 3510 Page 61  
Sta. 837+58.25 To Sta. 853+91.47  
15.015 Acres  
Remainder Left Side 11.1 Acres ±  
Right Side 12.1 Acres ±



- U-1016 S.W. Bell Telephone Co.  
Sta. 854+16.54
- U-1887 Texas Electric Service Co.  
Sta. 853+91.00
- U-5031 City of Hurst Water Line  
Sta. 853+25.00
- U-5064 Lone Star Gas Co.  
Sta. 854+63.00

CURVE DATA  
 P.I. 831+77.11  
 Δ = 20° 36' 51" Lt.  
 D = 1° 00'  
 T = 1,041.97'  
 L = 2,061.42'  
 R = 5,729.58'

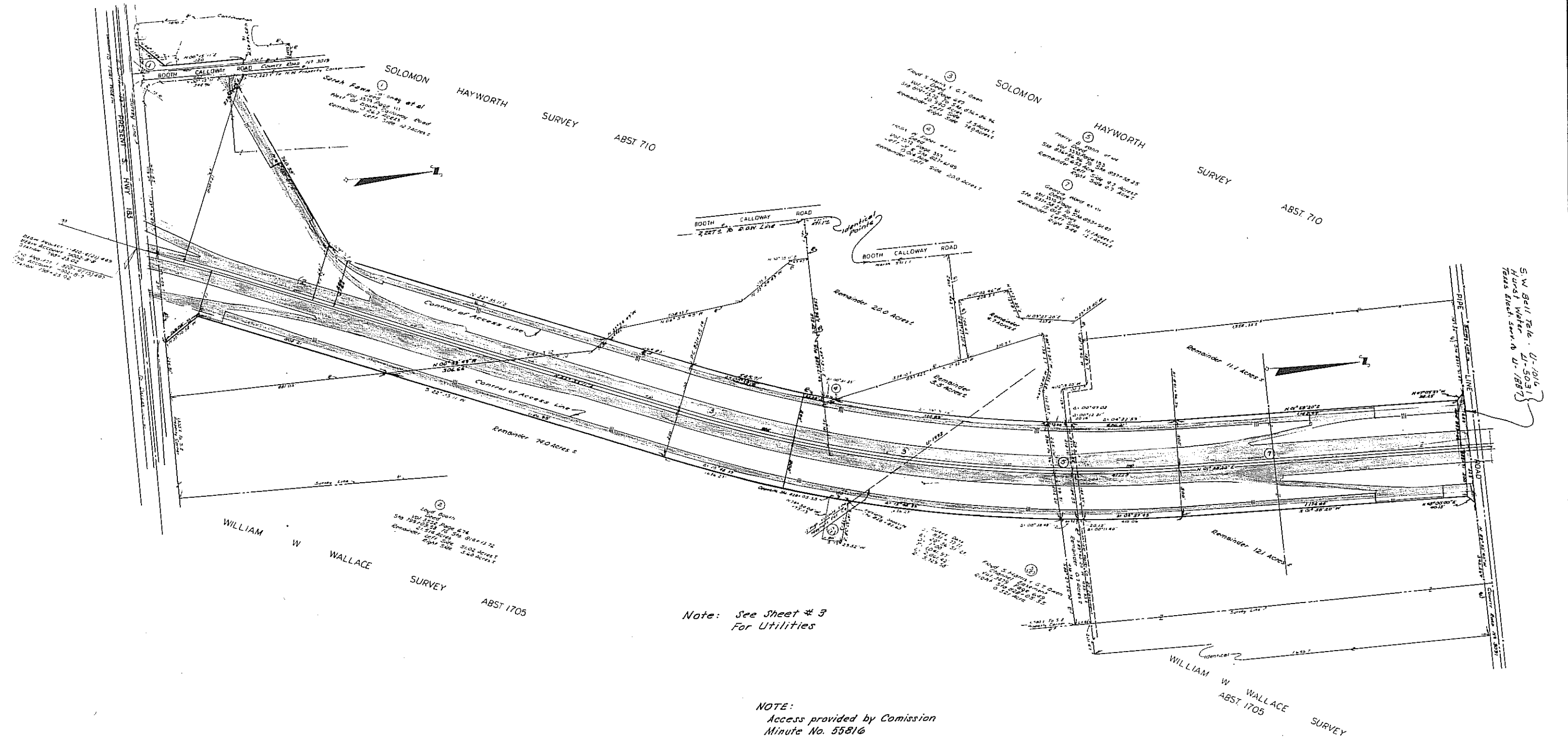
Floyd S. Harris & G.T. Owen  
 Channel Easement  
 Vol. 3479 Page 649  
 Right Sta. 828+05.35  
 0.321 Acre

Scale in Feet  
 0 100 200

WILLIAM W. WALLACE SURVEY  
 ABST. 1705

FED. PROJ. NO.	STATE	FEDERAL PROJECT NO.	SHEET NO.
6	Texas	I-820-4(21) 449	3
STATE DIST. NO.	COUNTY	CONT. SHEETS	TOTAL SHEETS
2	TARRANT	8 13 34	I-820

R.O.W. 5002-8-8



Note: See Sheet # 3  
For Utilities

NOTE:  
Access provided by Commission  
Minute No. 55816

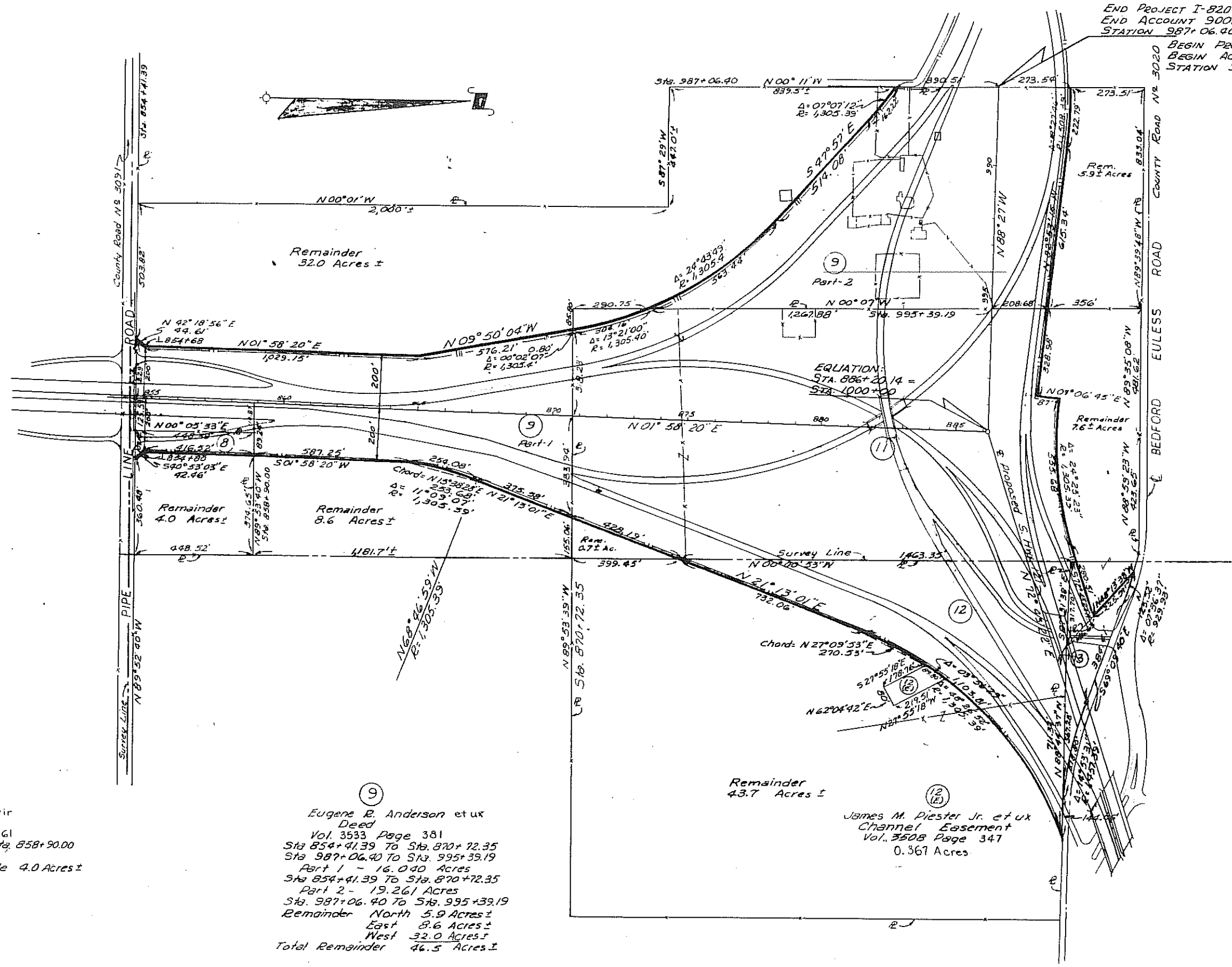
Scale in Feet  
0 100 200 300 400 500

FED. RD. DIV. NO.	STATE	FEDERAL PROJECT NO.	SHEET NO.
6	TEXAS	1-820-4(2)449	4
STATE DIST. NO.	COUNTY	CONTRACT NO.	HIGHWAY NO.
2	TARRANT	8 13 34	1-820

R.O.W. 9002-B-8

WILLIAM W. WALLACE SURVEY ABST. 1606

END PROJECT I-820-4(21) 449  
 END ACCOUNT 9002-8-8  
 STATION 987+06.40  
 BEGIN PROJECT I-820-4(13) 451  
 BEGIN ACCOUNT 9002-8-9  
 STATION 987+06.40



(11)  
 Nora May Mackney et vir  
 Deed  
 Vol. 3528 Page 332  
 38.317 Acres  
 Remainder North 7.6 Acres ±  
 East 0.7 Acre ±  
 West 0.3 Acre ±

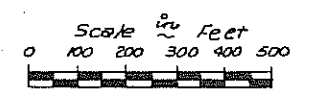
(12)  
 James M. Piester Jr. et ux  
 Deed  
 Vol. 3508 Page 345  
 11.626 Acres  
 Remainder 93.7 Acres ±

(13)  
 M. H. Hovenkamp  
 Deed  
 Vol. 3717 Page 332  
 1.293 Acres  
 Remainder 0 Acres

(8)  
 Georgia Ward et vir  
 Deed  
 Vol. 3570 Page 61  
 Sta. 854+41.39 To Sta. 858+90.00  
 0.853 Acre  
 Remainder Right Side 4.0 Acres ±

(9)  
 Eugene R. Anderson et ux  
 Deed  
 Vol. 3533 Page 381  
 Sta. 854+41.39 To Sta. 870+72.35  
 Sta. 987+06.40 To Sta. 995+39.19  
 Part 1 - 16.040 Acres  
 Sta. 854+41.39 To Sta. 870+72.35  
 Part 2 - 19.261 Acres  
 Sta. 987+06.40 To Sta. 995+39.19  
 Remainder North 5.9 Acres ±  
 East 8.6 Acres ±  
 West 32.0 Acres ±  
 Total Remainder 46.5 Acres ±

(12)  
 James M. Piester Jr. et ux  
 Channel Easement  
 Vol. 3508 Page 347  
 0.367 Acres



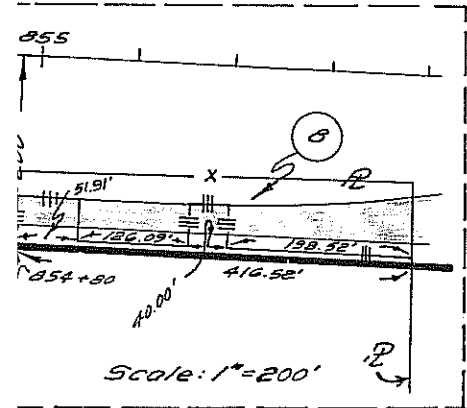
E. S. CARDER SURVEY ABST. 308

FED. RD. DIV. NO.	STATE	FEDERAL PROJECT NO.	SHEET NO.
6	TEXAS	I-820-4(21) 449	4A
STATE DIST. NO.	COUNTY	CONF. SECT.	JOB HIGHWAY NO.
2	TARRANT	8 13 34	I-820

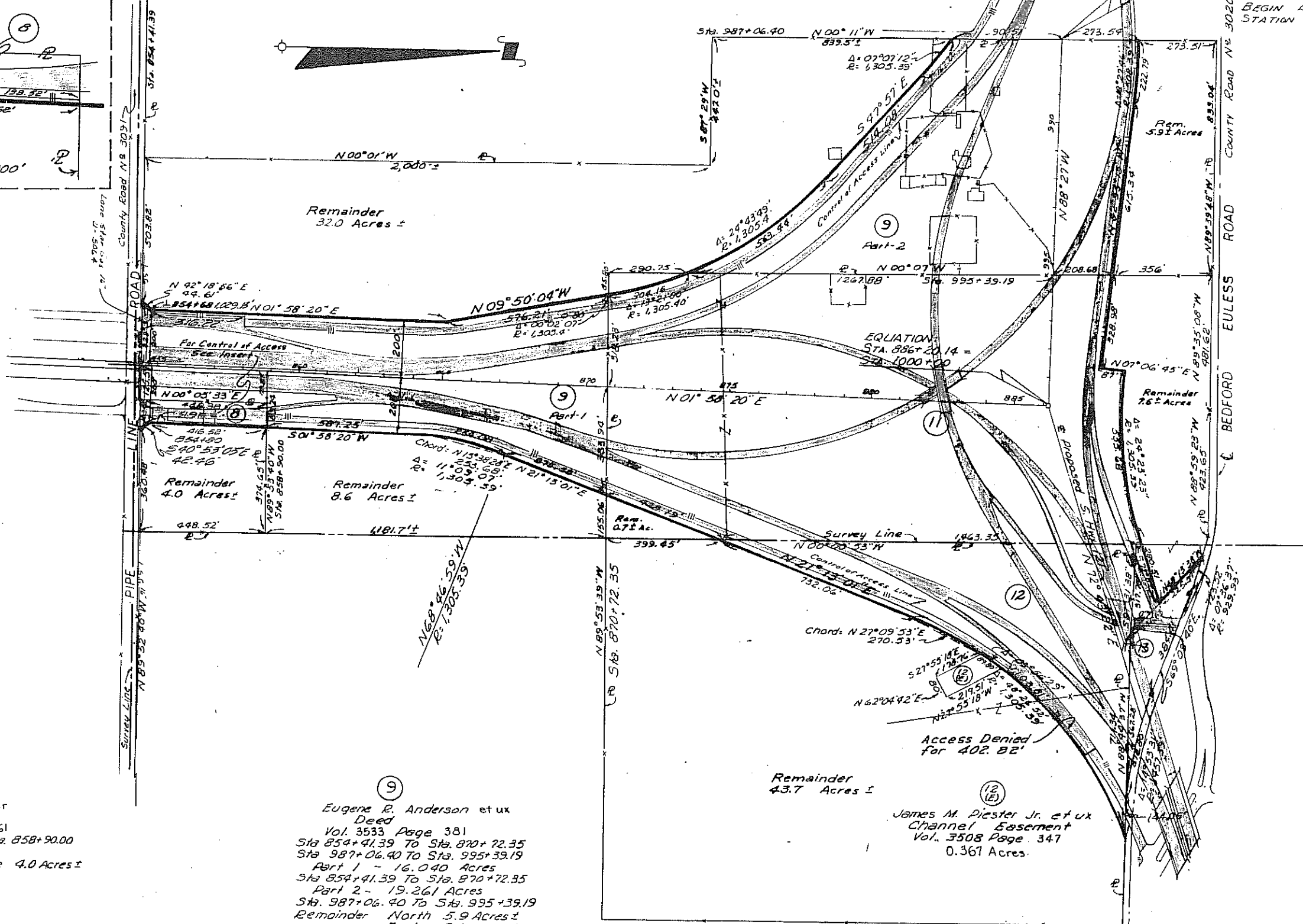
2-25-70

R.O.W. 9002-8-8

WILLIAM W. WALLACE SURVEY ABST. 1606



END PROJECT I-820-4(21) 449  
 END ACCOUNT 9002-8-8  
 STATION 987+06.40  
 BEGIN PROJECT I-820-4(13) 451  
 BEGIN ACCOUNT 9002-8-9  
 STATION 987+06.40



(11)  
 Nora May Hackney et vir  
 Deed  
 Vol. 3528 Page 332  
 38.317 Acres  
 Remainder North 7.6 Acres ±  
 East 0.7 Acres ±  
 West 0.3 Acres

(12)  
 James M. Piester Jr. et ux  
 Deed  
 Vol. 3508 Page 345  
 11.626 Acres  
 Remainder 43.7 Acres ±

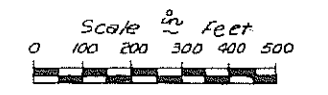
(13)  
 M. H. Hovenkamp  
 Deed  
 Vol. 3717 Page 332  
 1.293 Acres  
 Remainder 0 Acres

NOTE:  
 Access provided by Commission  
 Minute No. 55816

(8)  
 Georgia Ward et vir  
 Deed  
 Vol. 3570 Page 61  
 Sta. 854+41.39 To Sta. 858+90.00  
 0.853 Acres  
 Remainder Right Side 4.0 Acres ±

(9)  
 Eugene R. Anderson et ux  
 Deed  
 Vol. 3533 Page 381  
 Sta. 854+41.39 To Sta. 870+72.35  
 Sta. 987+06.40 To Sta. 995+39.19  
 Part 1 - 16.040 Acres  
 Sta. 854+41.39 To Sta. 870+72.35  
 Part 2 - 19.261 Acres  
 Sta. 987+06.40 To Sta. 995+39.19  
 Remainder North 5.9 Acres ±  
 East 8.6 Acres ±  
 West 32.0 Acres ±  
 Total Remainder 46.5 Acres ±

(12E)  
 James M. Piester Jr. et ux  
 Channel Easement  
 Vol. 3508 Page 347  
 0.361 Acres.



E. S. CARDER SURVEY ABST. 308