



YOU ARE HERE

I-35 is currently slow and outdated.



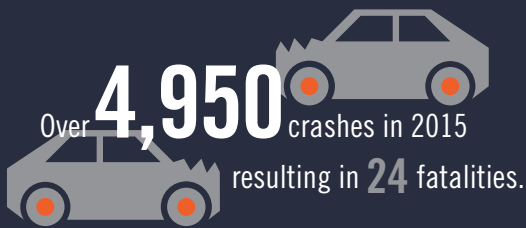
I-35 is congested for **6 hours** a day from US 183 to SH 71.



By 2040 it'll be **9 hours** a day.



86% of these vehicles have an origin or destination in Williamson, Travis or Hays counties.

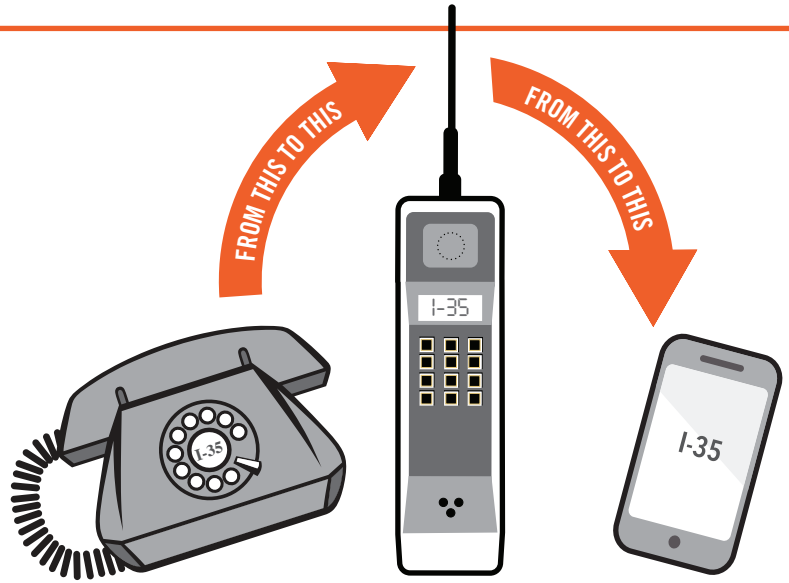


2 MILLION people living in the Austin area.

3.8 MILLION in 2040.

SMART WAY FORWARD

Transforming I-35 to be smart and efficient.



I-35 through the Capital Area was originally built **50 years ago**. The proposed improvements are taking this old, outdated interstate and transforming it into a smart and efficient highway system.

HOW WE'RE GOING TO MAKE I-35 BETTER

	EXPRESS LANES	Provide a reliable route for cars, buses, vanpools, and emergency vehicles
	INNOVATIVE DESIGN	Add intersection bypass lanes, upgraded and innovative intersections, integrated operations technology
	IMPROVED SAFETY	Increase length to enter, exit and change lanes
	SMART CHOICES	Add express lanes, enhanced transit, and bike and pedestrian facilities
	UP-TO-DATE INFORMATION	Facilitate user decisions on where, when, and how to travel using on-road technology
	COMMUNITY VALUES	Improve east/west connectivity, maximize existing right-of-way without overbuilding, allow for technology advancement