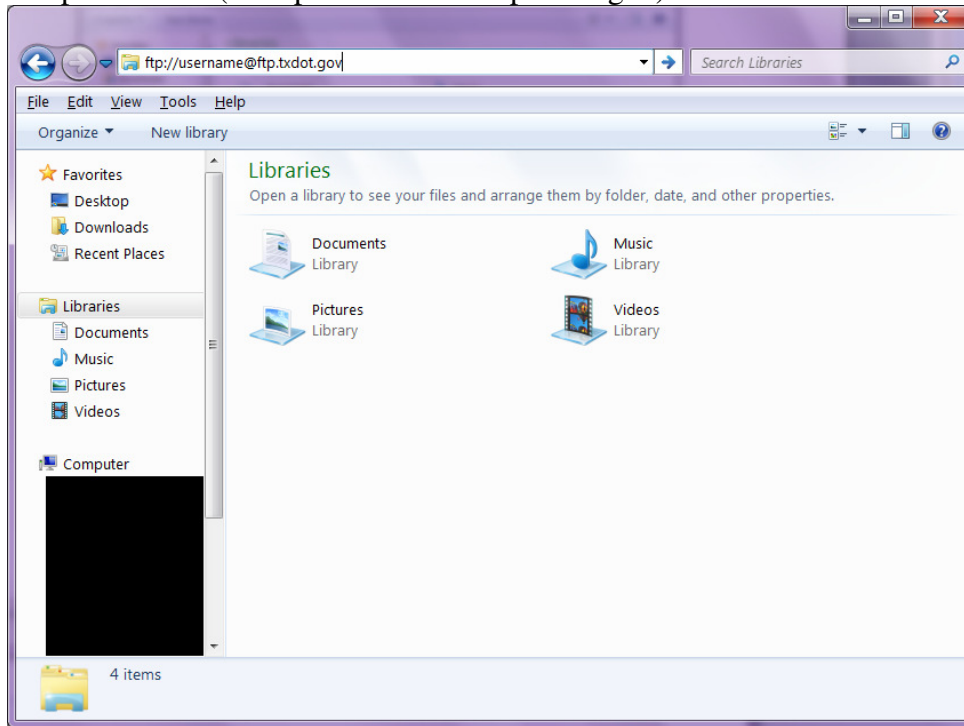
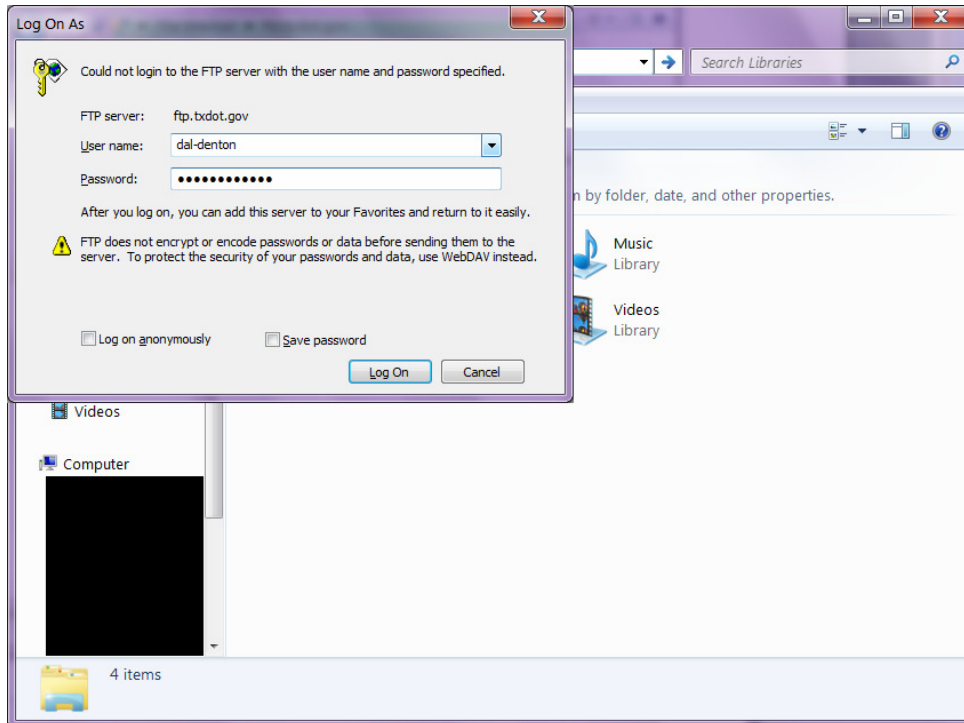


Using FTP using Windows Explorer

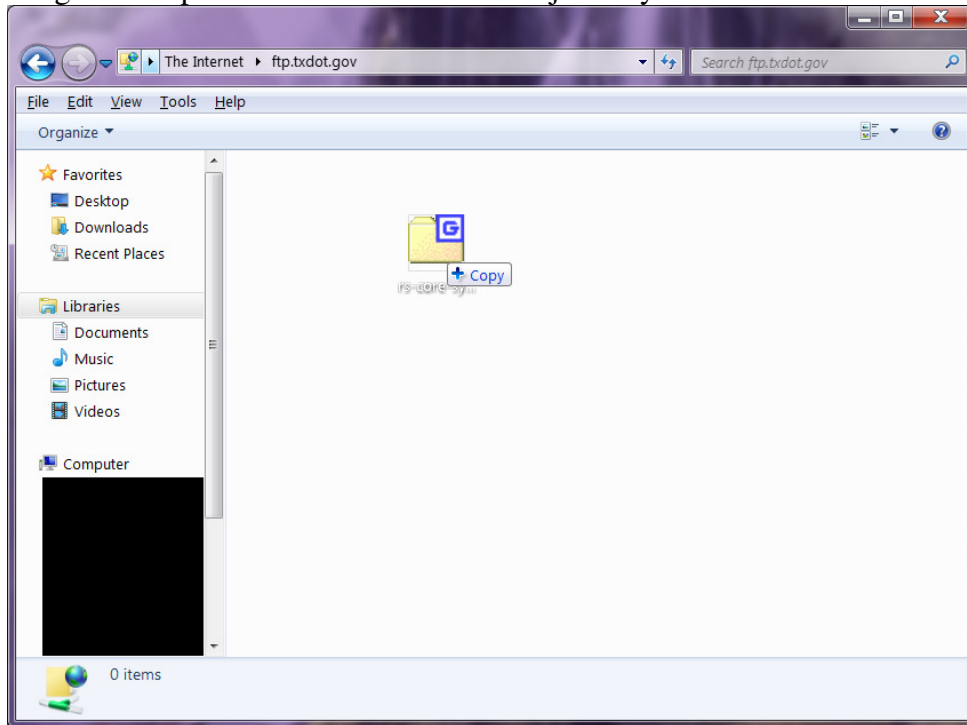
1. Open an explorer shell and type in the username and address of the FTP server and push enter. (ex. ftp://username@ftp.txdot.gov)



2. Enter your FTP username and password for the account you wish to gain access.



3. Drag-and-drop files in/out of this window just as you would a local folder.



4. Once you have finished transferring files, end the session by closing the window.