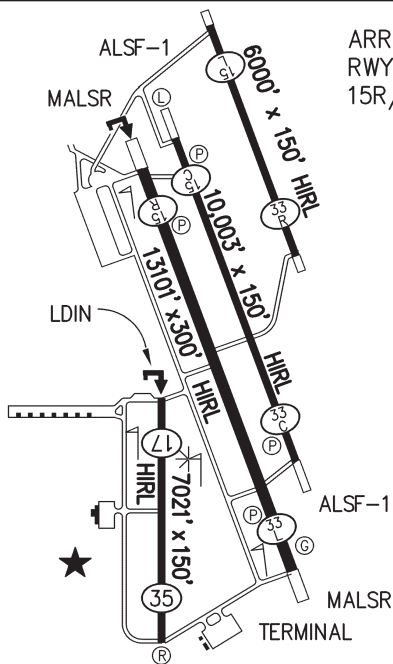


377 WICHITA FALLS, SHEPPARD AFB / WICHITA FALLS MUNI (SPS)

UPDATED: 3/13/2014

ARRESTING CABLES IN  
RWYS 15L/33R AND  
15R/33L OVERRUNS



EXERCISE EXTREME  
CAUTION LANDING  
ON RWY 17; DO NOT  
FLY OVER PARALLEL  
TWY TO RWY 15R-33L

**Lat:** N 33° 59.33'  
**Lon:** W 98° 29.51'

**Elev:** 1019' MSL  
**TPA:** STD

**Sectional:** DALLAS-FT WORTH  
**Downtown to Apt:** 05 nm/N

**Owner:** UNITED STATES AIR FORCE.  
SHEPPARD AFB  
WICHITA FALLS, TX 76311

**Manager:** LEANN MORAN  
4000 ARMSTRONG DR SUITE 8  
WICHITA FALLS, TX 76305  
940-855-3623

**Phone:**

**E-mail:** leann.moran@wichitafallstx.gov

**Sheppard AFB Contact:** RONALD BOGUS 940-676-7119

**ATTENDANCE SCHEDULE:** 24 HRS

**FUEL:** JET A 100LL

**REPAIRS:** Airframe: MINOR Power Plant: MINOR

**LIGHTS:** DSK-DWN RDO/CTL **UNICOM:** 122.95 **CTAF:** 119.75

**ASOS:** 940-855-9045 **ATIS:** 132.05

**REMARKS:** FOOD-LODGING (3 MI); TRANSPORTATION TO TOWN; AIRPORT  
ABATEMENT PROCEDURES

**FIXED BASE OPERATORS:** LANDMARK AVIATION 800-267-1466

