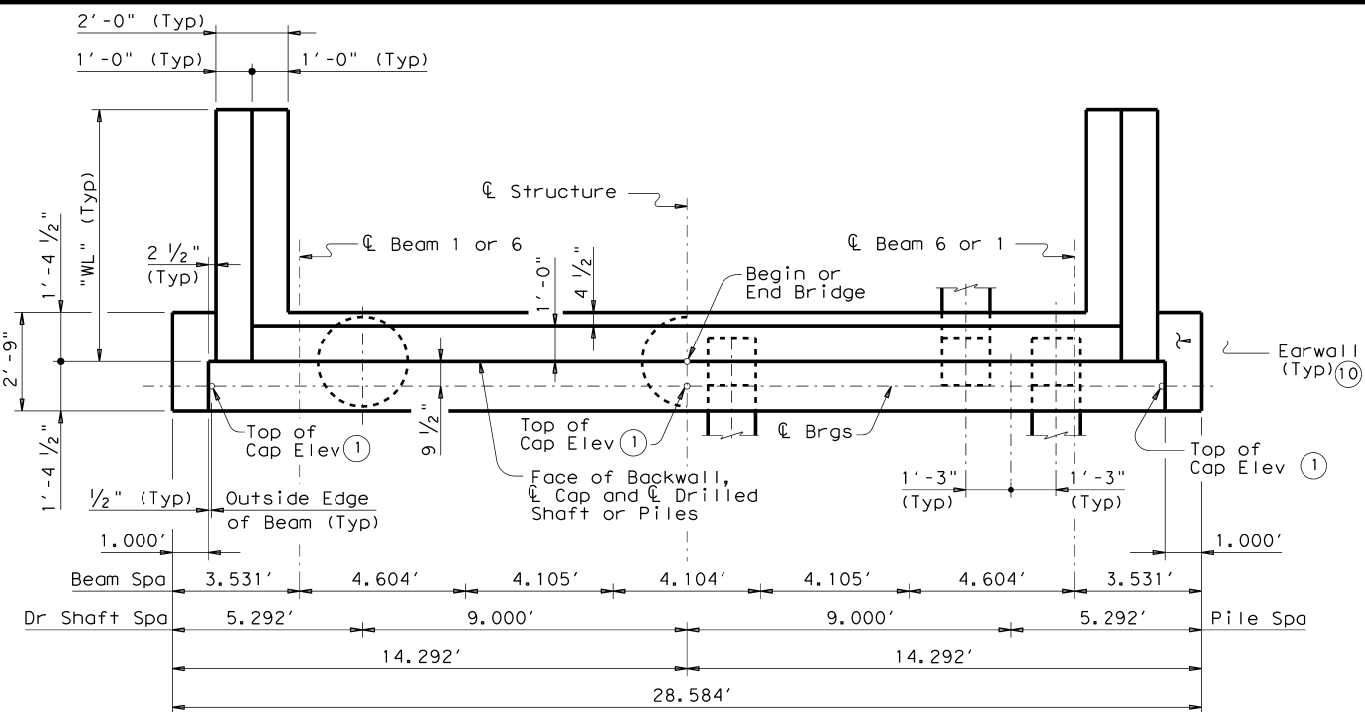
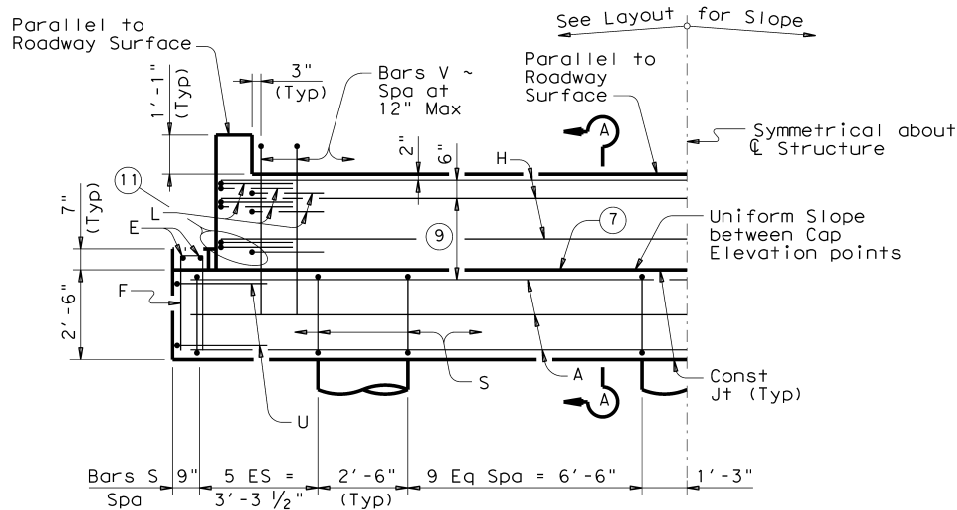


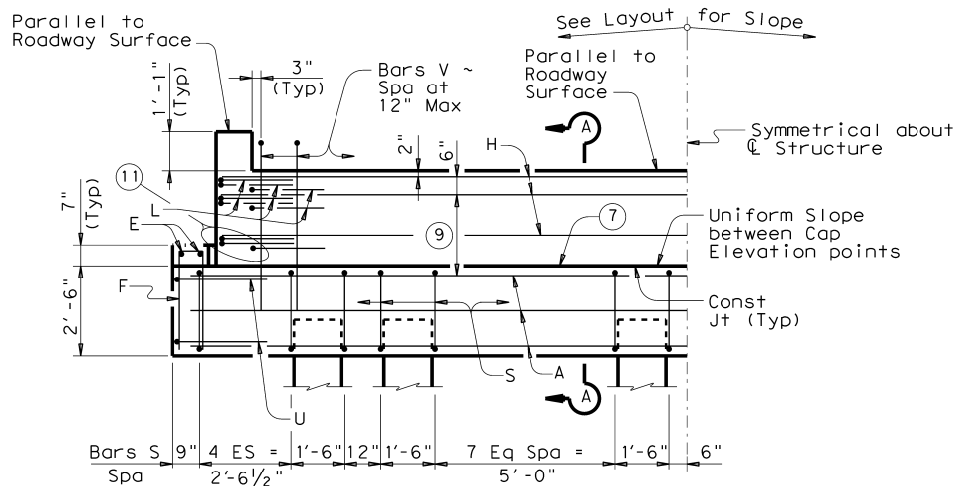
DISCLAIMER: The use of this standard is governed by the "Texas Engineering Practice Act". No warranty of any kind is made by TxDOT for any purpose whatsoever. TxDOT assumes no responsibility for the conversion of this standard to other formats or for incorrect results or damages resulting from its use.



SHOWING DRILLED SHAFTS PLAN SHOWING BATTERED PILES

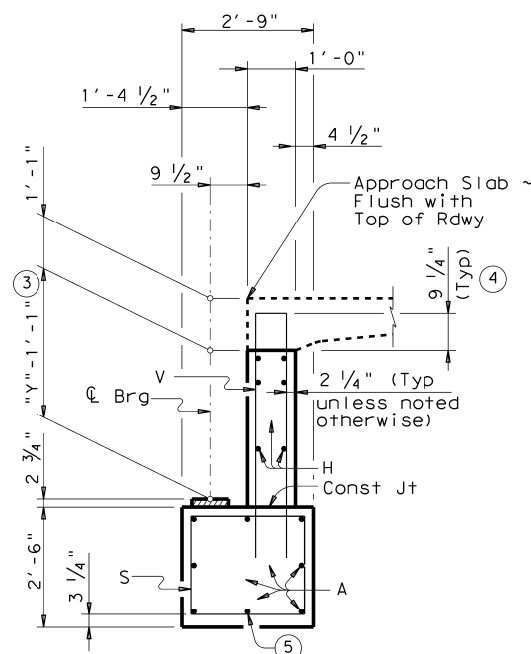


HALF ELEVATION ~ DRILLED SHAFT ABUTMENT



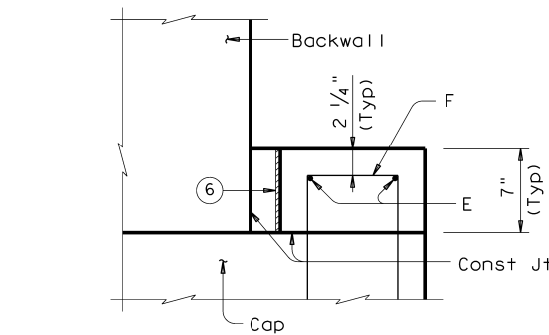
HALF ELEVATION ~ PILE ABUTMENT

(Showing 16" Piles ~ for Piles larger than 16", adjust Bars S spacing as required to avoid Piling)



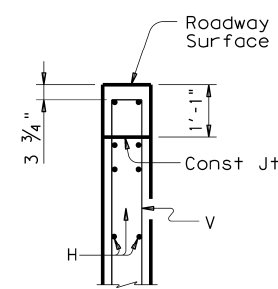
SECTION A-A

(Showing Approach Slab) ②



EARWALL ELEVATION DETAIL ⑩

(Slope top of earwall away from beams)



BACKWALL DETAIL

(Without Approach Slab) ②

TABLE OF WINGWALL LENGTHS "WL"	
Beam Type	"WL"
B20	8.000'
B28	10.000'
B34	11.000'

TABLE OF FOUNDATION LOADS ⑧		
Span Length	Drilled Shaft Load	Battered Pile Load
Ft	Tons/DS	Tons/Pile
30	50	38
35	55	41
40	60	43
45	64	45
50	68	47
55	73	50
60	77	52
65	81	54
70	85	56
75	89	58
80	93	60
85	97	62
90	101	64
95	105	66

- ① Top of Cap Elevations are based on section depths shown on Span Details.
- ② See Bridge Layout for Joint type and to determine if Approach Slab is present.
- ③ See Span details for "Y" value.
- ④ Increase as required to maintain 3 3/4" from Finished Grade.
- ⑤ With pile foundations, replace Bar A, located at bottom centerline of cap with 2 ~ #11 x 5'-0" bars placed between pile groups. Deduct 93 Lbs from reinforcing steel total.
- ⑥ 1/2" Preformed Bituminous Fiber material between beam and earwall. Bond to beam with an approved adhesive. Inside face of earwall to be cast with vertical side of beam.
- ⑦ Surface finish for the top of Cap will be a textured wood float finish. The surface must be level in the direction of the centerline of Beams.
- ⑧ Foundation loads are based on B34 beams.
- ⑨ Use 2 Eq Spa for B28 and B34 beams. Use 1 space for B20 beams.
- ⑩ Do not cast earwalls until beams are erected in their final position.
- ⑪ This set of Bars L only required for B28 and B34 beams.

GENERAL NOTES:

Designed according to AASHTO LRFD Specifications.
 Concrete strength $f'_c = 3,600$ psi.
 All reinforcing must be Grade 60.
 Designed for normal embankment header slope of 3:1 or 2:1.
 See Bridge Layout for beam type and foundation type, size and length.
 See standard FD for all foundation details and notes.
 See applicable rail details for rail anchorage cast in wingwalls.
 See standard CRR for riprap attachment details, if applicable.
 These abutment details may be used only with the following standards:
 SBBS-B20-24 or SBBO-B20-24
 SBBS-B28-24 or SBBO-B28-24
 SBBS-B34-24 or SBBO-B34-24

HL93 LOADING SHEET 1 OF 2

ABUTMENTS PRESTR CONC BOX BEAMS 24' RDWY			
ABB-24			
FILE: BB-ABB24-11.dgn	DN: TxDOT	CK: TxDOT	DW: TxDOT
©TxDOT December, 2006	CONT	SECT	JOB
REVISIONS			HIGHWAY
04-11: Span length.	DIST	COUNTY	SHEET NO.

DATE: FILE:

DISCLAIMER: The use of this standard is governed by the "Texas Engineering Practice Act". No warranty of any kind is made by TxDOT for any purpose whatsoever. TxDOT assumes no responsibility for the conversion of this standard to other formats or for incorrect results or damages resulting from its use.

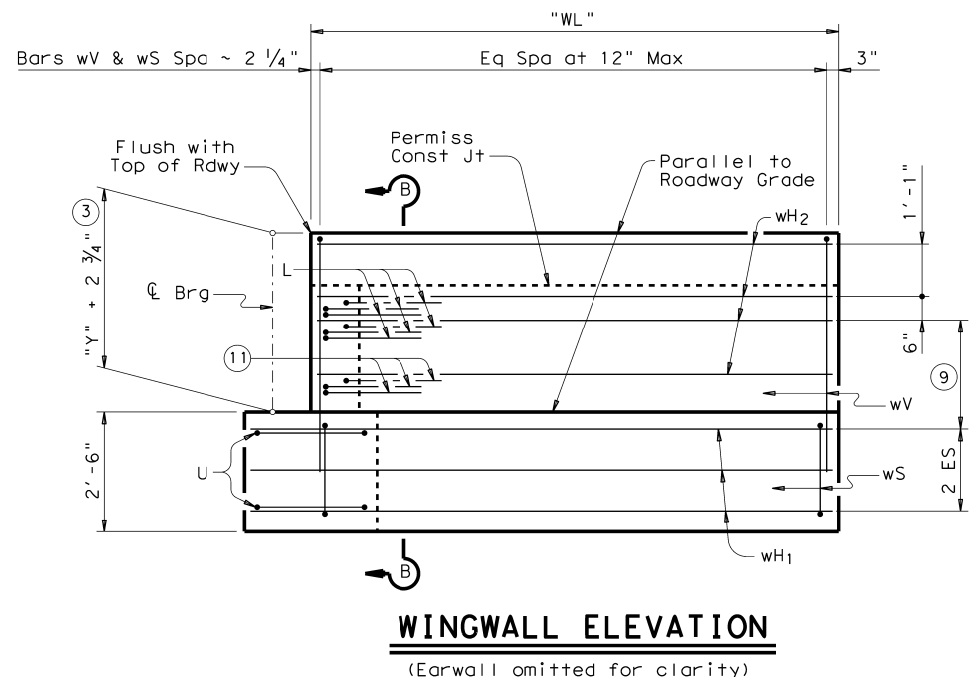
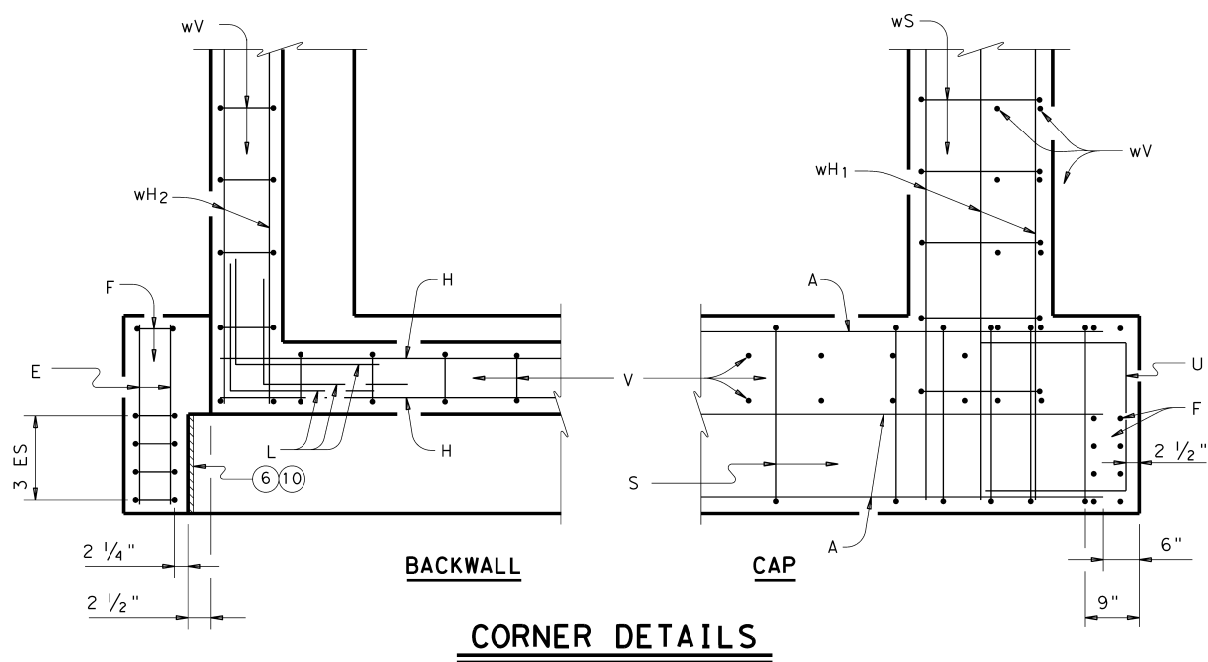


TABLE OF ESTIMATED QUANTITIES (TYPE B20 BEAMS)⁽¹²⁾

BAR	NO.	SIZE	LENGTH	WEIGHT
A (5)	8	#11	27'-7"	1,172
E	4	#5	2'-5"	10
F	10	#5	6'-1"	63
H	4	#6	25'-10"	155
L	12	#6	4'-0"	72
S	32	#4	9'-8"	207
U	4	#6	7'-3"	44
V	25	#5	7'-6"	191
wH1	14	#6	9'-0"	189
wH2	12	#6	7'-8"	138
wS	18	#4	7'-9"	93
wV	18	#5	7'-9"	145
Reinforcing Steel				Lb 2,479
Class "C" Concrete (w/Slab)				CY 12.6
Class "C" Concrete (w/ACP)				CY 12.3

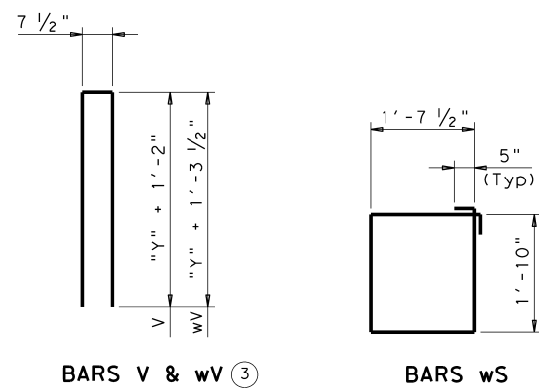
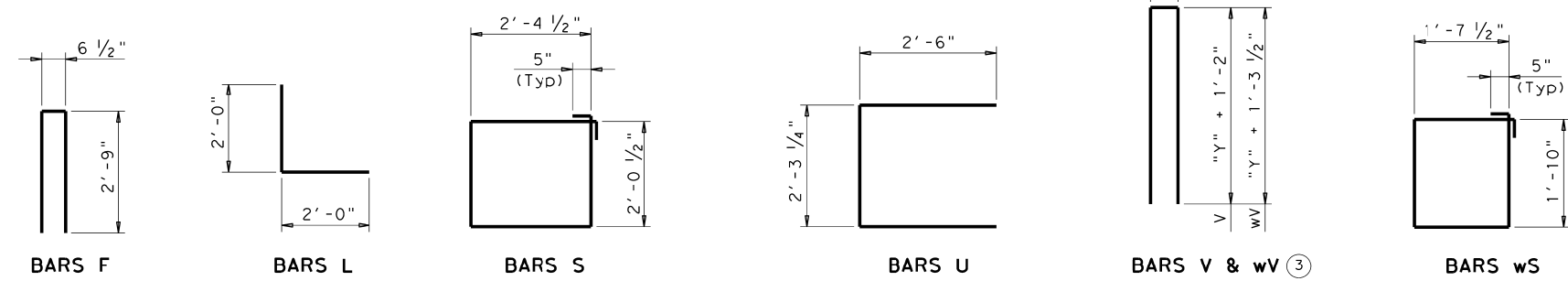
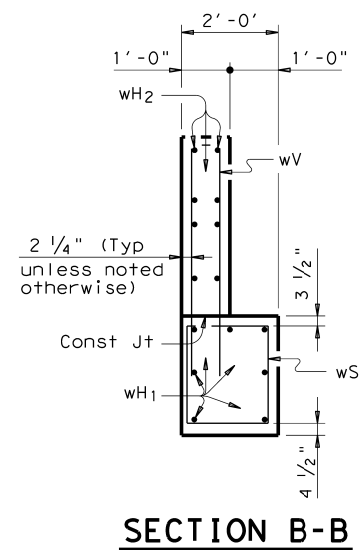
TABLE OF ESTIMATED QUANTITIES (TYPE B28 BEAMS)⁽¹²⁾

BAR	NO.	SIZE	LENGTH	WEIGHT
A (5)	8	#11	27'-7"	1,172
E	4	#5	2'-5"	10
F	10	#5	6'-1"	63
H	6	#6	25'-10"	233
L	18	#6	4'-0"	108
S	32	#4	9'-8"	207
U	4	#6	7'-3"	44
V	25	#5	8'-9"	226
wH1	14	#6	11'-0"	231
wH2	16	#6	9'-8"	232
wS	22	#4	7'-9"	114
wV	22	#5	9'-0"	207
Reinforcing Steel				Lb 2,847
Class "C" Concrete (w/Slab)				CY 14.7
Class "C" Concrete (w/ACP)				CY 14.4

TABLE OF ESTIMATED QUANTITIES (TYPE B34 BEAMS)⁽¹²⁾

BAR	NO.	SIZE	LENGTH	WEIGHT
A (5)	8	#11	27'-7"	1,172
E	4	#5	2'-5"	10
F	10	#5	6'-1"	63
H	6	#6	25'-10"	233
L	18	#6	4'-0"	108
S	32	#4	9'-8"	207
U	4	#6	7'-3"	44
V	25	#5	9'-10"	254
wH1	14	#6	12'-0"	252
wH2	16	#6	10'-8"	256
wS	24	#4	7'-9"	124
wV	24	#5	10'-1"	252
Reinforcing Steel				Lb 2,975
Class "C" Concrete (w/Slab)				CY 16.2
Class "C" Concrete (w/ACP)				CY 15.9

- (3) See Span details for "Y" value.
- (5) With pile foundations, replace Bar A, located at bottom centerline of cap, with 2 ~ #11 x 5'-0" bars placed between pile groups. Deduct 93 Lbs from reinforcing steel total.
- (6) 1/2" Preformed Bituminous Fiber material between beam and earwall. Bond to beam with an approved adhesive. Inside face of earwall to be cast with vertical side of beam.
- (9) Use 2 Eq Spa for B28 and B34 beams and 1 space for B20 beams.
- (10) Do not cast earwalls until beams are erected in their final position.
- (11) This set of Bars L only required for B28 and B34 beams.
- (12) Quantities shown are for one Abutment only (with Approach Slab). With no Approach Slab, add 1.0 CY Class "C" concrete and 78 Lb reinforcing steel for 2 additional Bars H.



HL93 LOADING SHEET 2 OF 2

Texas Department of Transportation **Bridge Division Standard**

ABUTMENTS
PRESTR CONC BOX BEAMS
24' RDWY

ABB-24

FILE: BB-ABB24-11.dgn	DN: TxDOT	CK: TxDOT	DW: TxDOT	CK: TxDOT
©TxDOT December, 2006	CONT	SECT	JOB	HIGHWAY
04-11: Span length.	DIST	COUNTY	SHEET NO.	

DATE: FILE: