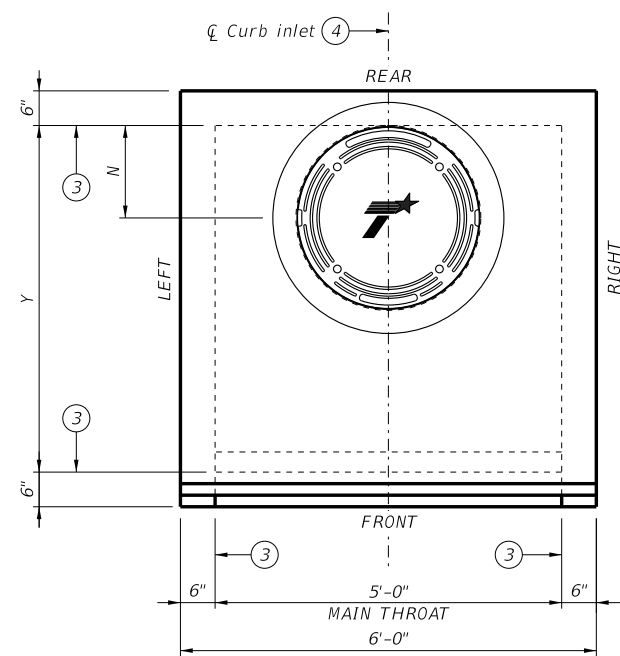


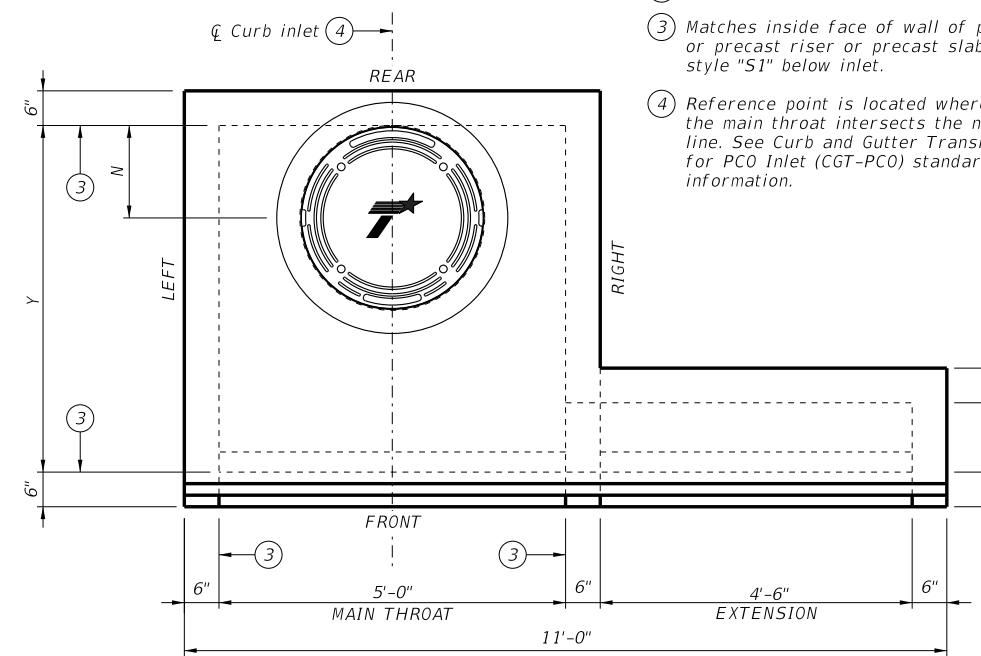
DISCLAIMER: The use of this standard is governed by the "Texas Engineering Practice Act." No warranty of any kind is made by TxDOT for any purpose whatsoever. TxDOT assumes no responsibility for the conversion of this standard to other formats or for incorrect results or damages resulting from its use.

DATE:
FILE:



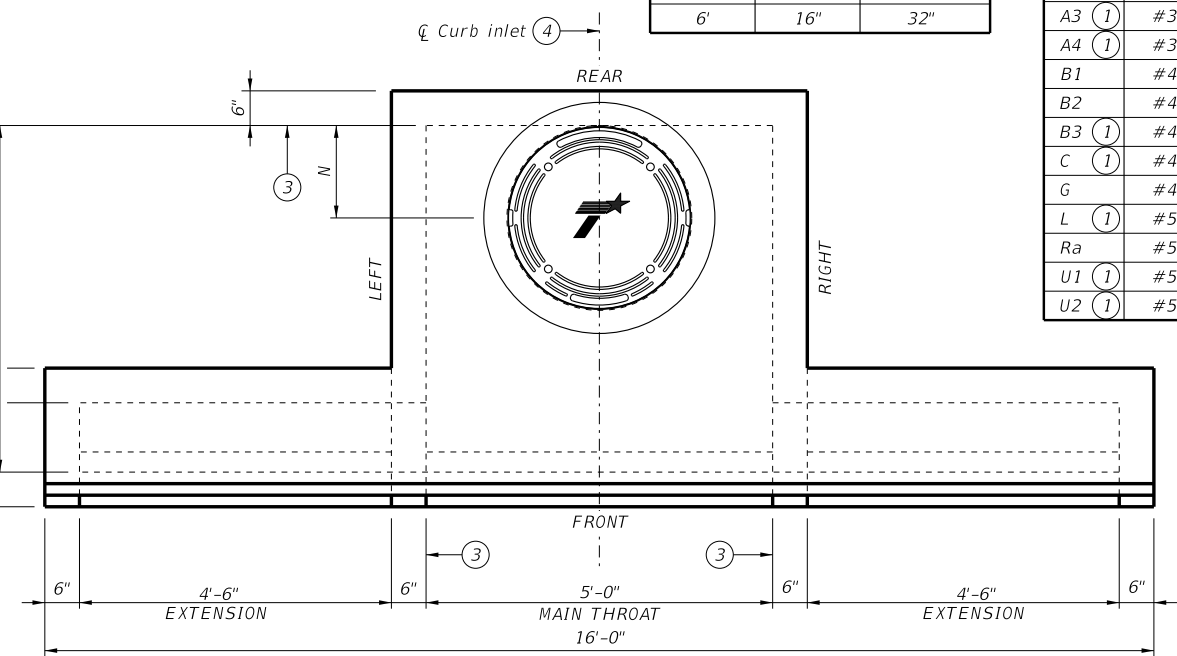
PLAN VIEW

(Shown without extensions.)
See SHEET 2 OF 4 for details.



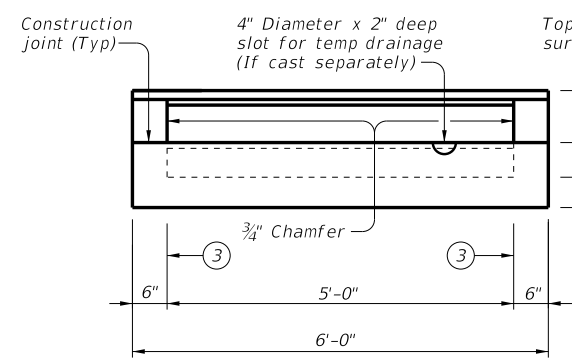
PLAN VIEW

(Showing one extension.)
See SHEET 3 OF 4 for details.



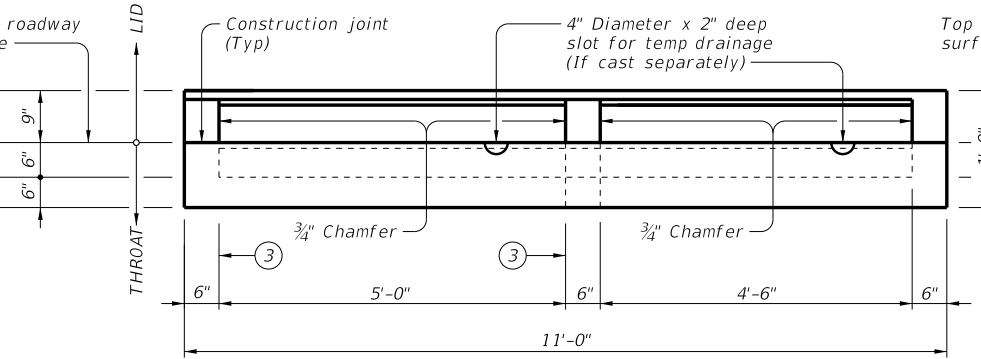
PLAN VIEW

(Showing extension on each side)
See SHEET 4 OF 4 for details.



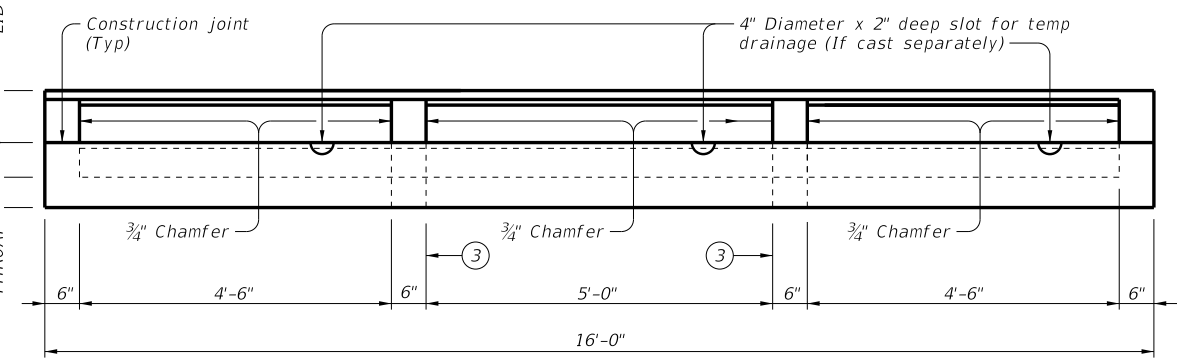
FRONT VIEW

(Shown without extensions.)
See SHEET 2 OF 4 for details.



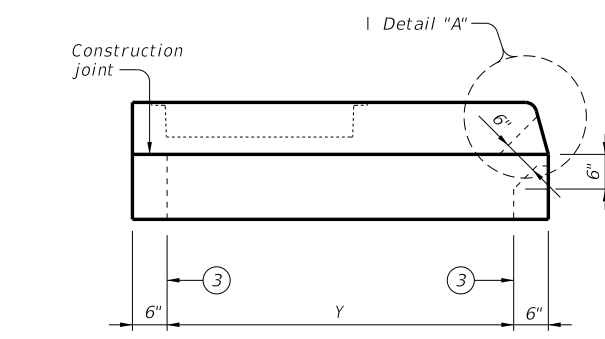
FRONT VIEW

(Showing one extension.)
See SHEET 3 OF 4 for details.



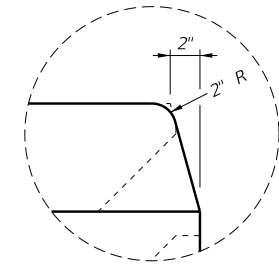
FRONT VIEW

(Showing extension on each side.)
See SHEET 4 OF 4 for details.



LEFT SIDE VIEW

(Extensions not shown for clarity.)



DETAIL "A"

- ① Reinforcing bar used only with extension(s).
- ② Nominal ring and cover size.
- ③ Matches inside face of wall of precast base or precast riser or precast slab lid (PSL) style "S1" below inlet.
- ④ Reference point is located where the centerline of the main throat intersects the normal gutter line. See Curb and Gutter Transition Details for PCO Inlet (CGT-PCO) standard for more information.

Size (Y)	N	MH Dia (2)
3'	9"	18"
4'	16"	32"
5'	16"	32"
6'	16"	32"

BAR	SIZE
A1	#3
A2	#3
A3 (1)	#3
A4 (1)	#3
B1	#4
B2	#4
B3 (1)	#4
C (1)	#4
G	#4
L (1)	#5
Ra	#5
U1 (1)	#5
U2 (1)	#5

CONSTRUCTION NOTES:

Chamfer all vertical edges of inlet lid 3/4" as shown in Front View, Sheet 1 of 4.
Maintain 1 1/2" clear cover to ends of all vertical reinforcing bars, unless otherwise noted.

MATERIAL NOTES:

Provide Class "S" concrete (f'c = 4,000 psi).
Provide Grade 60 reinforcing steel or equivalent area of WWR.
Provide cast iron solid cover, unless noted otherwise elsewhere in the plans.

GENERAL NOTES:

Designed according to AASHTO LRFD Bridge Design Specifications.
The intent of this standard is to provide a cast-in-place lid to be used with precast base, precast riser or precast slab lid style "S1".
Inlet throat and lid are not intended for direct traffic. Do not place in roadway.
Lid and throat may be cast monolithically or separately.
See Precast Base (PB) standard for details and notes not shown.
See Precast Slab Lid (PSL) standard for details and notes not shown.
See Curb & Gutter Transitions Details (CGT-PCO) standard for transition examples.
Extensions may be right, left, both, or none. Provide extensions as specified elsewhere in the plans.
Shop drawings for approval are not required.
Payment for inlet is per Item 465, "Junction Boxes, Manholes, and Inlets" by type, size, and extension placement. Extensions are subsidiary to inlet.
Open area of main throat = 360 sq in.
Open area of one extension throat = 324 sq in.

Cover dimensions are clear dimensions, unless noted otherwise.
Reinforcing bar dimensions shown are out-to-out of bar.

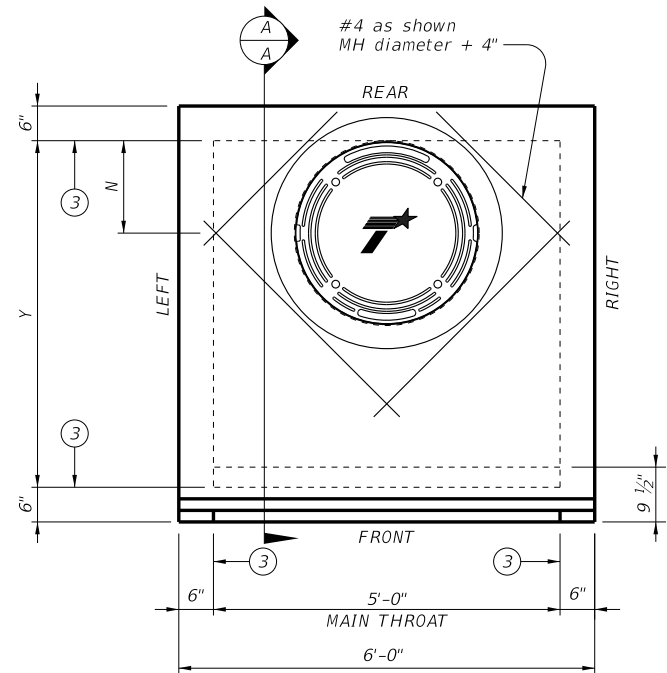


CAST-IN-PLACE CURB INLET OUTSIDE ROADWAY

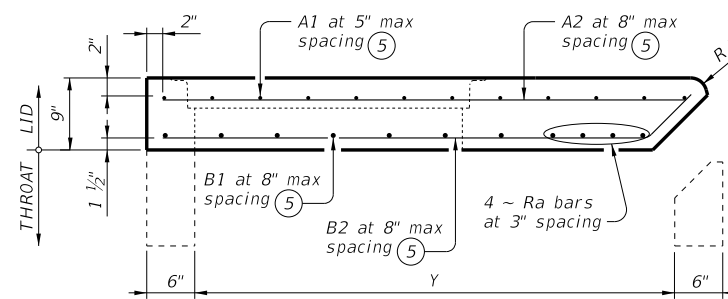
CCO

FILE: CD-CCO-23.dgn	DN: TxDOT	CK: TxDOT	DW: TxDOT	CK: TxDOT
©TxDOT February 2020	CONT	SECT	JOB	HIGHWAY
REVISIONS				
06-2023: Added reference point.	DIST	COUNTY		SHEET NO.

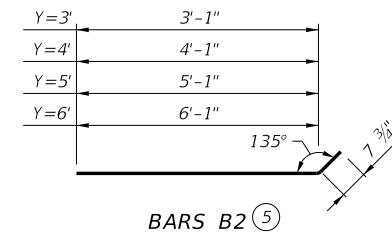
DISCLAIMER: This standard is governed by the "Texas Engineering Practice Act." No warranty of any kind is made by TxDOT for any purpose whatsoever. TxDOT assumes no responsibility for the conversion of this standard to other formats or for incorrect results or damages resulting from its use.



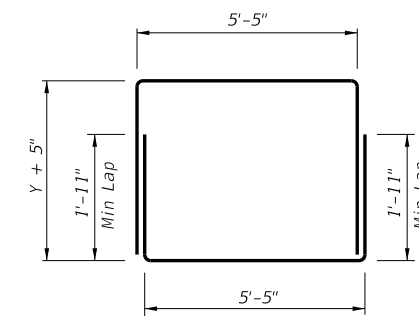
LID PLAN VIEW
(Shown without extensions)



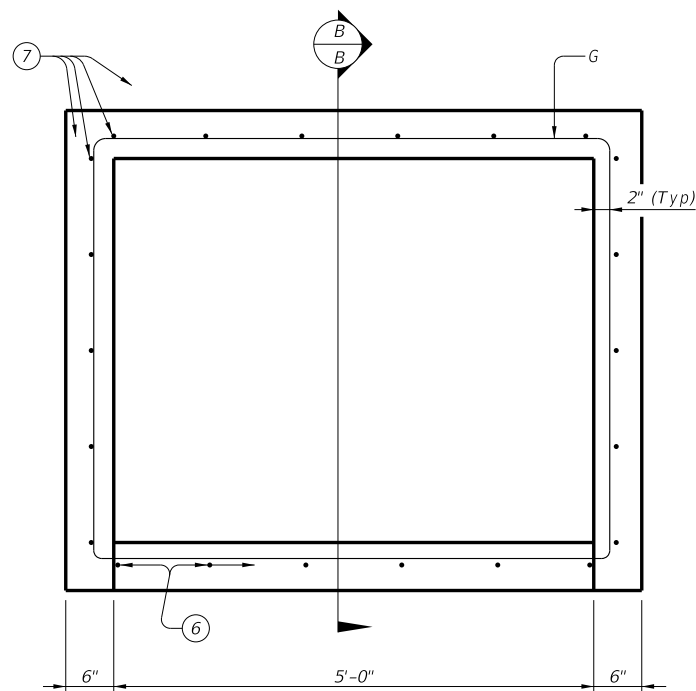
LID SECTION A-A



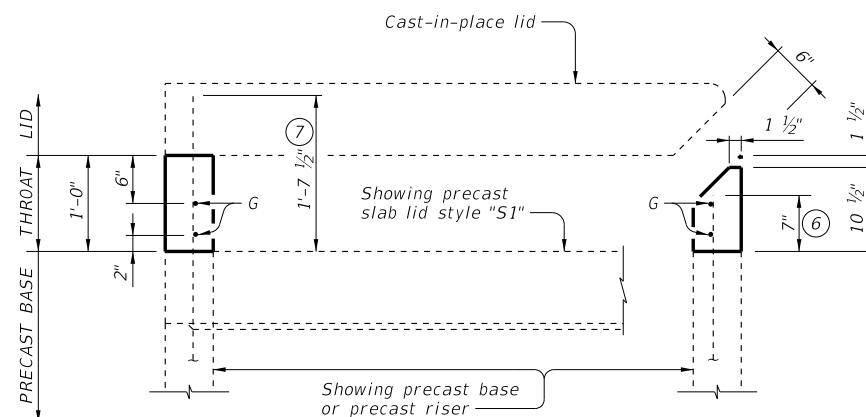
BARS B2



BARS G
Showing one complete bar.



THROAT PLAN VIEW
(Shown without extensions)



THROAT SECTION B-B

(Showing reinforcing bar extended from precast base or precast riser or precast slab lid style "S1".)

- ③ Matches inside face of wall of precast base or precast riser or precast slab lid style "S1" below inlet.
- ⑤ Cut reinforcing bars as needed to provide 1 1/2" clear to manhole.
- ⑥ Extend reinforcing bars from precast base or precast riser or precast slab lid style "S1" 7".
- ⑦ Extend reinforcing bars from precast base or precast riser or precast slab lid style "S1" 1'-7 1/2".

DATE:
FILE:

HL93 LOADING

SHEET 2 OF 4



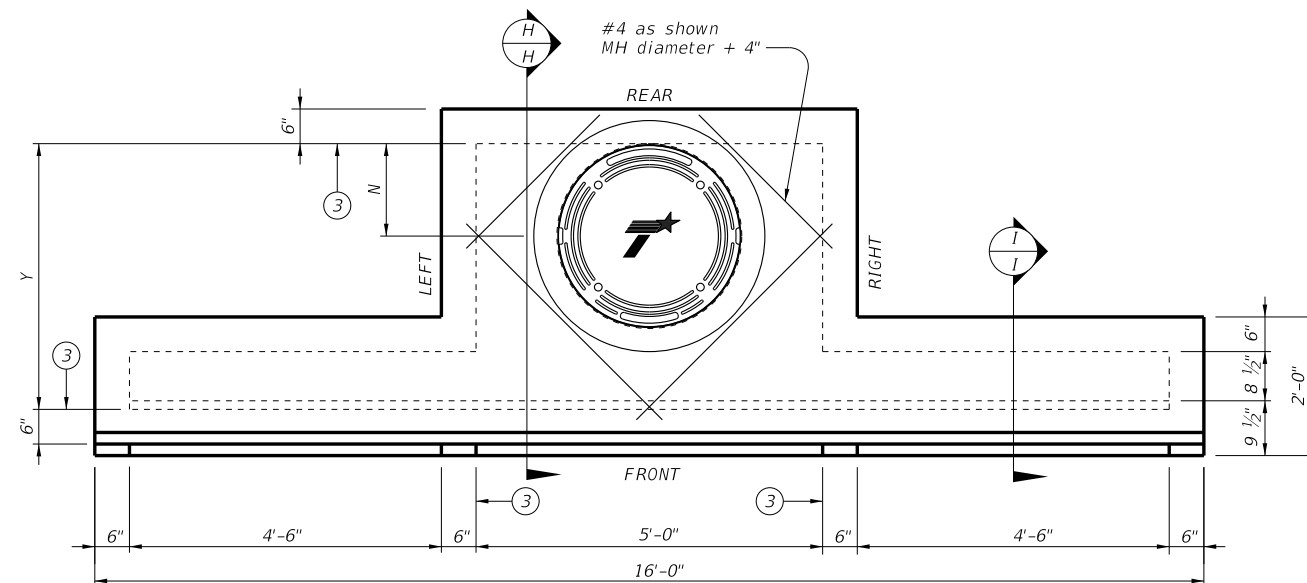
Bridge
Division
Standard

**CAST-IN-PLACE CURB
INLET OUTSIDE ROADWAY**

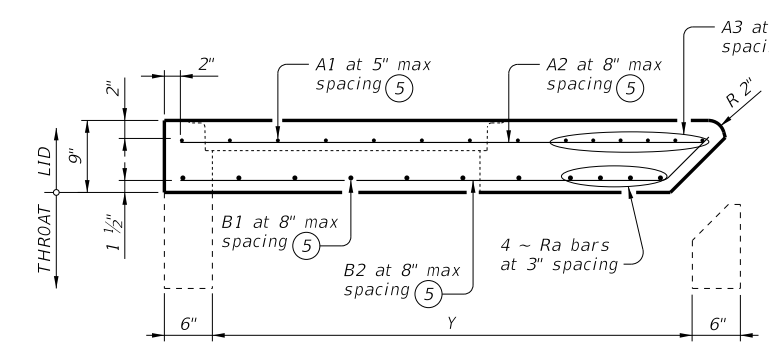
CCO

FILE: CD-CCO-23.dgn	DN: TxDOT	CK: TxDOT	DW: TxDOT	CK: TxDOT
©TxDOT February 2010	CONT	SECT	JOB	HIGHWAY
REVISIONS				
06-2023: Added reference point.	DIST	COUNTY	SHEET NO.	

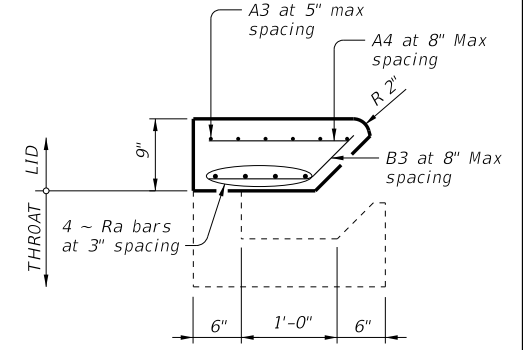
DISCLAIMER: The use of this standard is governed by the "Texas Engineering Practice Act." No warranty of any kind is made by TxDOT for any purpose whatsoever. TxDOT assumes no responsibility for the conversion of this standard to other formats or for incorrect results or damages resulting from its use.



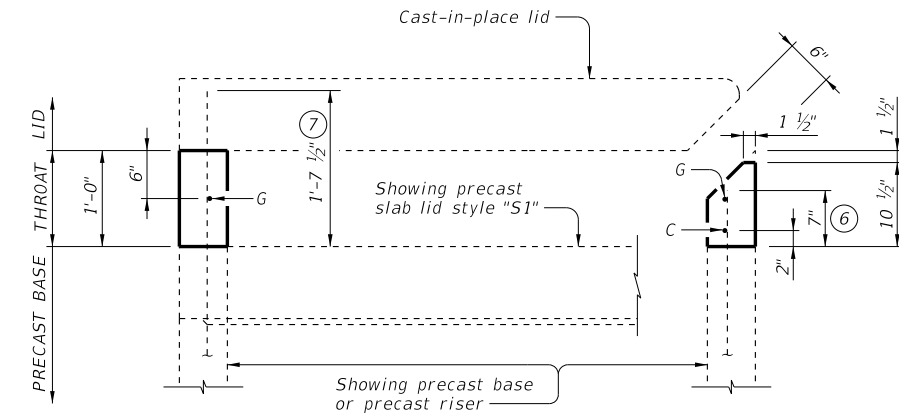
LID PLAN VIEW
(Showing extension on each side.)



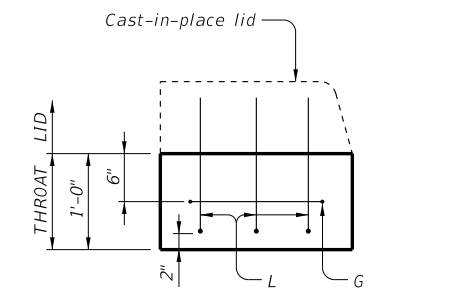
LID SECTION H-H



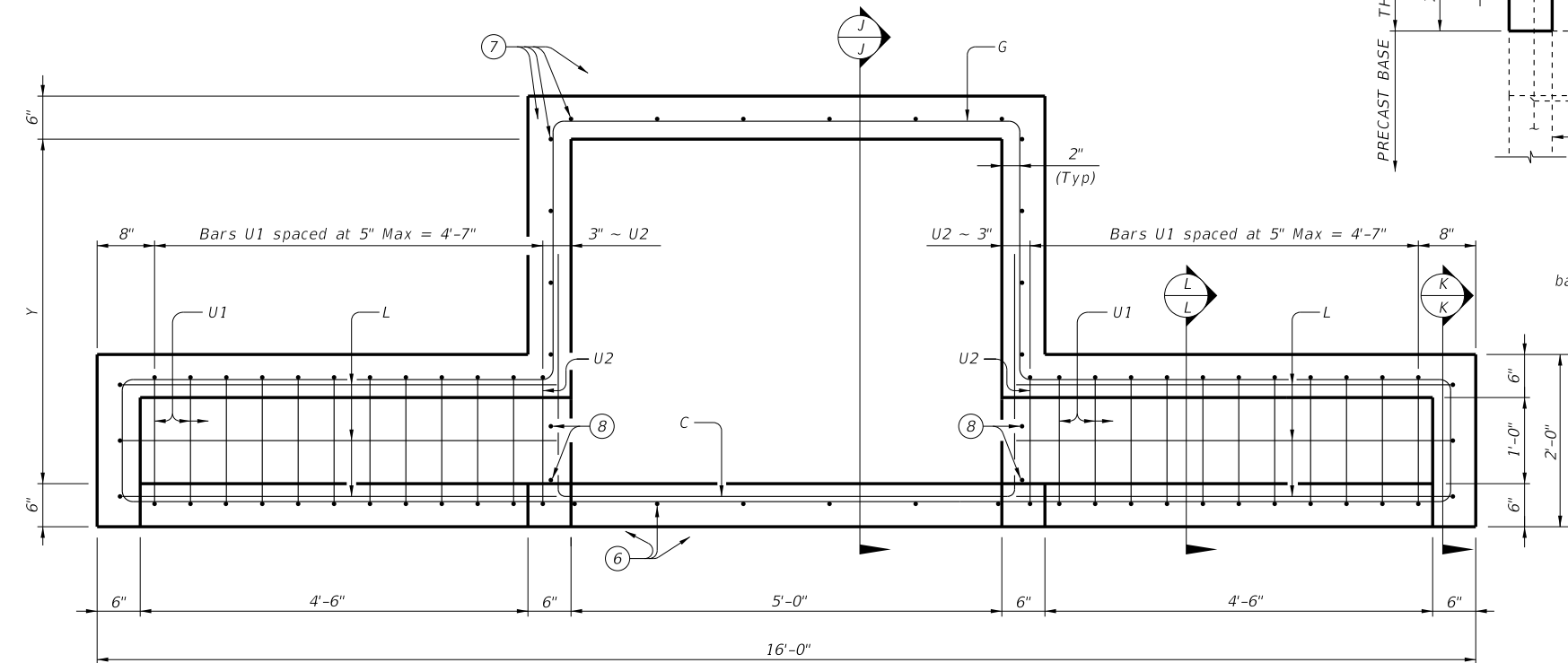
LID SECTION I-I



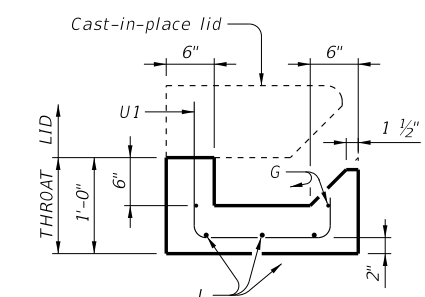
THROAT SECTION J-J
(Showing reinforcing bar extended from precast base or precast riser or precast slab lid style "S1".)



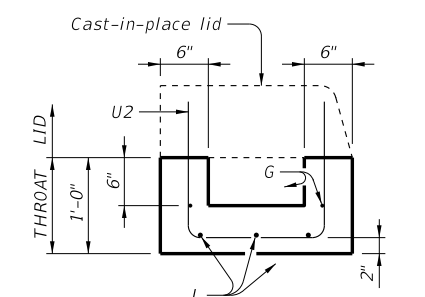
THROAT SECTION K-K



THROAT PLAN VIEW
(Showing extension on each side.)

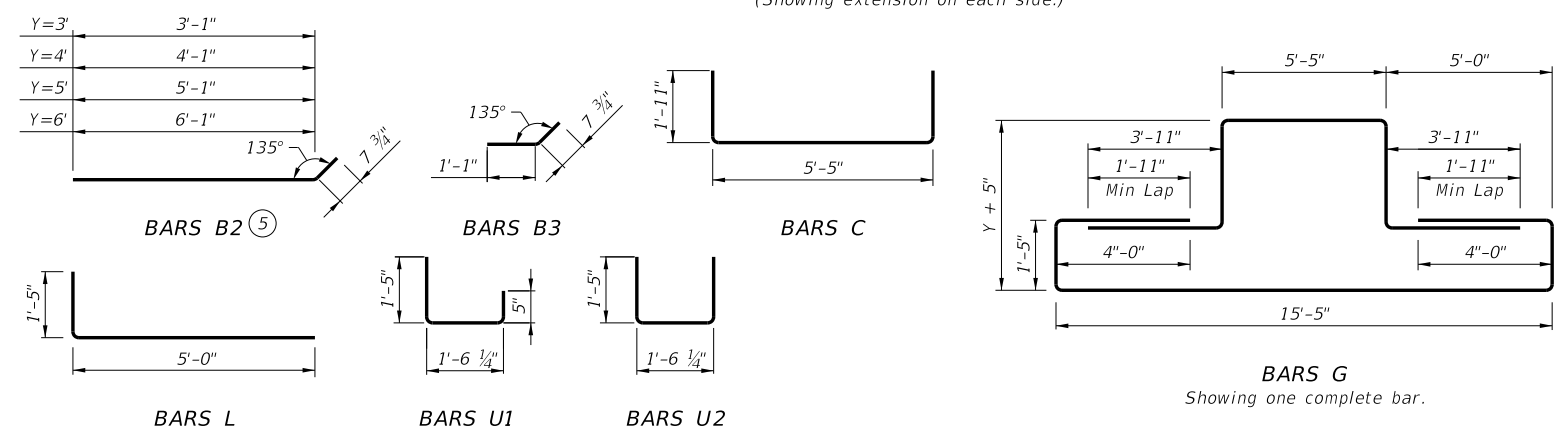


BARS U1 LOCATION



BARS U2 LOCATION

THROAT SECTION L-L



- ③ Matches inside face of wall of precast base or precast riser or precast slab lid style "S1" below inlet.
- ⑤ Cut reinforcing bars as needed to provide 1 1/2" clear to manhole.
- ⑥ Extend reinforcing bars from precast base or precast riser or precast slab lid style "S1" 7".
- ⑦ Extend reinforcing bars from precast base or precast riser or precast slab lid style "S1" 1'-7 1/2".
- ⑧ Do not extend reinforcing bars from precast base.



CAST-IN-PLACE CURB INLET OUTSIDE ROADWAY

CCO

FILE: CD-CCO-23.dgn	DN: TxDOT	CK: TxDOT	DW: TxDOT	CK: TxDOT
©TxDOT February 2020	CONT	SECT	JOB	HIGHWAY
REVISIONS				
06-2023: Added reference point.	DIST	COUNTY		SHEET NO.

DATE: FILE: