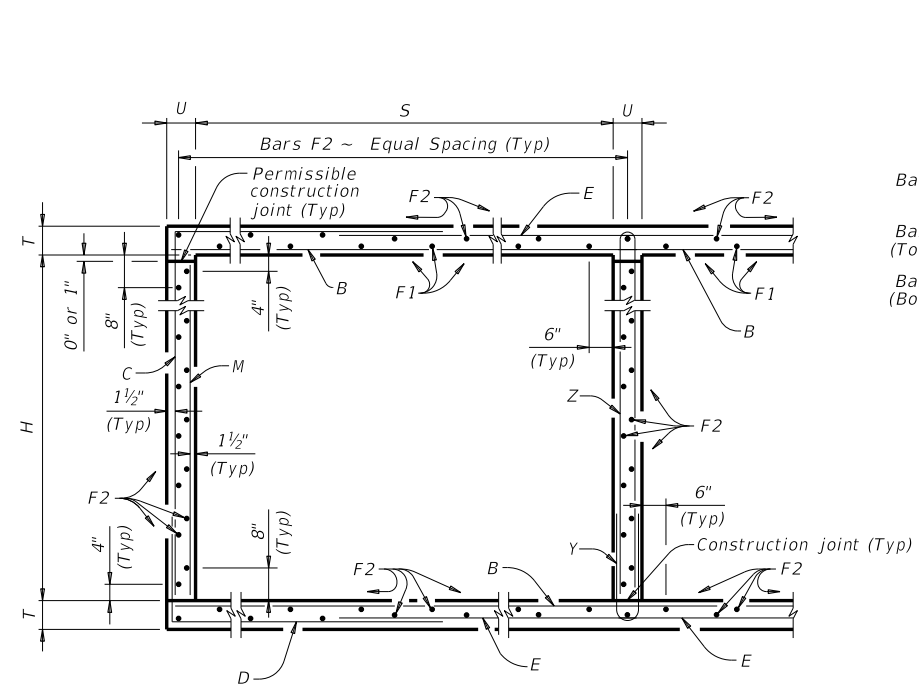
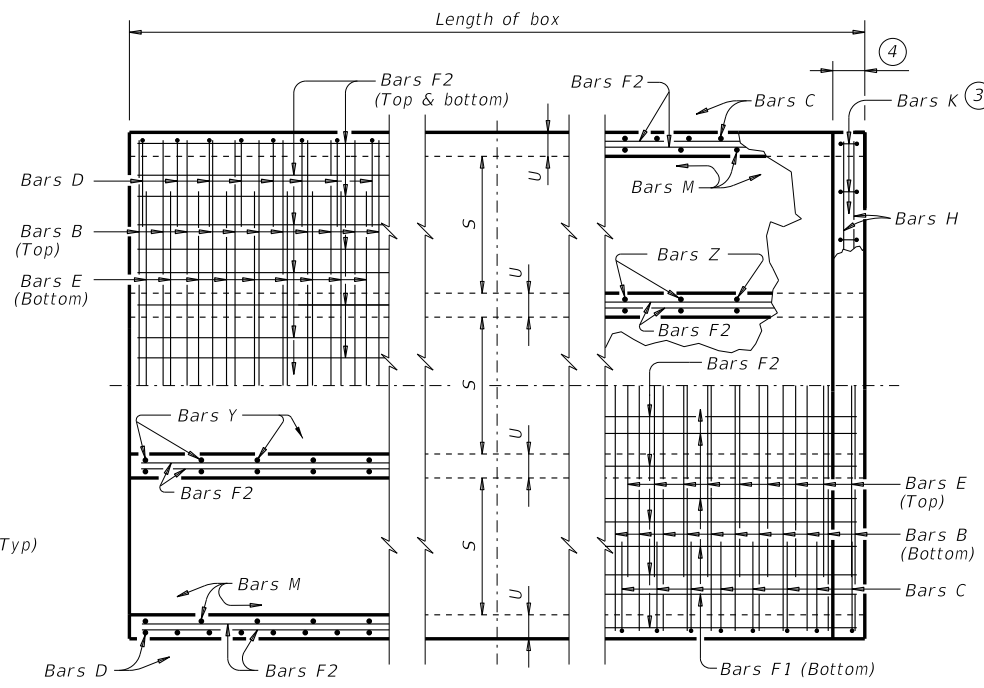


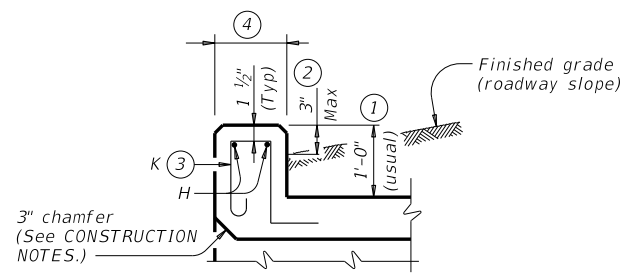
DISCLAIMER: The use of this standard is governed by the "Texas Engineering Practice Act." No warranty of any kind is made by TxDOT for any purpose whatsoever. TxDOT assumes no responsibility for the conversion of this standard to other formats or for incorrect results or damages resulting from its use.



**TYPICAL SECTION**

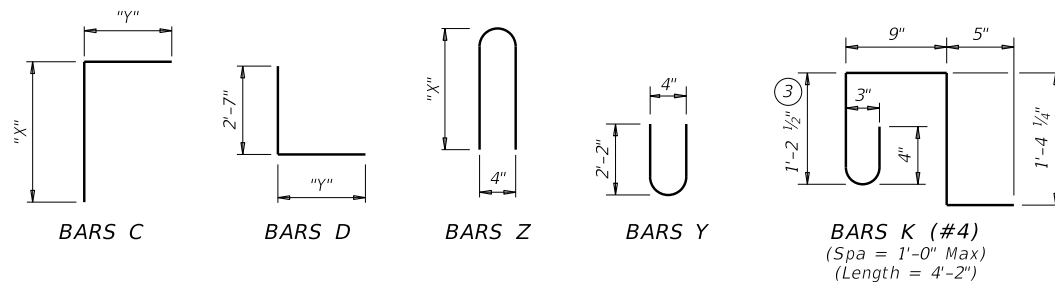


**BOTTOM SLAB**  
**PART PLANS**  
**TOP SLAB**



**SECTION THRU CURB**

TABLE OF BAR DIMENSIONS		
H	"X"	"Y"
3'-0"	3'-6 1/2"	4'-5"
4'-0"	4'-6 1/2"	4'-5"
5'-0"	5'-6 1/2"	4'-5"
6'-0"	6'-6 1/2"	4'-5"
7'-0"	7'-6 1/2"	4'-5"



- 0" Min to 5'-0" Max. Estimated curb heights are shown elsewhere in the plans. For structures with pedestrian rail or curbs taller than 1'-0", refer to the Extended Curb Details (ECD) standard sheet. For structures with T631 or T631LS bridge rail, refer to the Mounting Details for T631 & T631LS Rails (T631-CM) standard sheet. Refer to the Rail Anchorage Curb (RAC) standard sheet for structures with bridge rail other than T631 or T631LS.
- For vehicle safety, the following requirements must be met:
  - For structures without bridge rail, construct curbs no more than 3" above finished grade.
  - For structures with bridge rail, construct curbs flush with finished grade. Reduce curb heights, if necessary, to meet the above requirements. No changes will be made in quantities and no additional compensation will be allowed for this work.
- For curbs less than 1'-0" high, tilt Bars K or reduce bar height as necessary to maintain cover. For curbs less than 3" high, Bars K may be omitted.
- 1'-0" typical. 2'-3" when the Rail Anchorage Curb (RAC) standard sheet is referred to elsewhere in the plans.

The Contractor may replace Bars B, C, D, E, F1, F2, M, Y, and/or Z with deformed welded wire reinforcement (WWR) meeting the requirements of ASTM A1064. The area of required reinforcement may be reduced by the ratio of 60 ksi / 70 ksi. Spacing of WWR is limited to 4" Min and 18" Max. When required, provide lap splices in the WWR of the same length required for the equivalent bar size, rounded up for wire sizes between conventional bar sizes. The lap length required for WWR is never less than the lap length required for uncoated #4 bars.

Example conversion: Replacing No. 6 Gr 60 at 6" Spacing with WWR  
 Required WWR = (0.44 sq. in. per 0.5 ft.) x (60 ksi / 70 ksi) = 0.755 sq. in. per ft.  
 If D30.6 wire is used to meet the 0.755 sq. in. per ft. requirement in this example, the required spacing = (0.306 sq. in.) / (0.755 sq. in. per ft.) x (12 in. per ft.) = 4.86" Max spacing. Required lap length for the provided D30.6 wire is 2'-1" (the same minimum lap length required for uncoated #5 bars, as listed under MATERIAL NOTES).

**CONSTRUCTION NOTES:**  
 Do not use permanent forms.  
 Chamfer the bottom edge of the top slab 3" at the entrance.  
 Optionally, raise construction joints shown at the flow line by a maximum of 6". If this option is taken, Bars M may be cut off or raised, Bars C and D may be reversed, and Bars Y and Z may be reversed.

**MATERIAL NOTES:**  
 Provide Grade 60 reinforcing steel.  
 Provide galvanized reinforcing steel if required elsewhere in the plans.  
 Provide Class C concrete (f'c = 3,600 psi) for culvert barrel and curb, with the following exceptions: provide Class S concrete (f'c = 4,000 psi) for top slabs of:  
 • culverts with overlay,  
 • culverts with 1-to-2 course surface treatment, or  
 • culverts with the top slab as the final riding surface.  
 Provide bar laps, where required, as follows:  
 • Uncoated or galvanized ~ #4 = 1'-8" Min  
 • Uncoated or galvanized ~ #5 = 2'-1" Min  
 • Uncoated or galvanized ~ #6 = 2'-6" Min

**GENERAL NOTES:**  
 Designed according to AASHTO LRFD Bridge Design Specifications for the range of fill heights shown.  
 See the Multiple Box Culverts Cast-In-Place Miscellaneous Detail (MC-MD) standard sheet for details pertaining to skewed ends, angle sections, and lengthening.

Cover dimensions are clear dimensions, unless noted otherwise.  
 Reinforcing bar dimensions shown are out-to-out of bar.

HL93 LOADING SHEET 1 OF 2

**Texas Department of Transportation**  
 Bridge Division Standard

**MULTIPLE BOX CULVERTS  
 CAST-IN-PLACE  
 7'-0" SPAN  
 0' TO 10' FILL  
 MC-7-10**


FILE: CD-MC710-20.dgn	DN: TBE	CK: BMP	DW: TxDOT	CK: TxDOT
©TxDOT February 2020	CONT	SECT	JOB	HIGHWAY
REVISIONS				
DIST	COUNTY			SHEET NO.

DATE:  
FILE:

DISCLAIMER: The use of this standard is governed by the "Texas Engineering Practice Act." No warranty of any kind is made by TxDOT for any purpose whatsoever. TxDOT assumes no responsibility for the conversion of this standard to other formats or for incorrect results or damages resulting from its use.

DATE: FILE:

NUMBER OF SPANS	SECTION DIMENSIONS				BILLS OF REINFORCING STEEL (For Box Length = 40 feet)																														QUANTITIES														
					Bars B					Bars C & D					Bars E					Bars F1 ~ #4			Bars F2 ~ #4			Bars M ~ #4			Bars Y & Z ~ #4				Bars H 4 ~ #4		Bars K		Per Foot of Barrel		Curb		Total								
	S	H	T	U	No.	Size	Spa	Length	Wt	No.	Size	Spa	Bars C		Bars D		No.	Size	Spa	Length	Wt	No.	Spa	Length	Wt	No.	Spa	Length	Wt	No.	Spa	Length	Wt	No.	Spa	Bars Y		Bars Z		Length	Wt	No.	Wt	Conc (CY)	Ref (Lb)	Conc (CY)	Ref (Lb)	Conc (CY)	Ref (Lb)
													Length	Wt	Length	Wt																				Length	Wt	Length	Wt										
2	7'-0"	3'-0"	8"	7"	108	#6	9"	15'-6"	2,514	162	#5	6"	7'-11"	1,338	7'-0"	1,183	108	#6	9"	11'-5"	1,852	10	18"	39'-9"	266	54	18"	39'-9"	1,434	108	9"	3'-0"	216	54	9"	4'-7"	165	7'-3"	262	15'-6"	41	34	95	0.972	230.8	1.2	136	40.0	9,366
3	7'-0"	3'-0"	8"	7"	108	#6	9"	23'-1"	3,744	162	#5	6"	7'-11"	1,338	7'-0"	1,183	108	#6	9"	19'-0"	3,082	15	18"	39'-9"	398	77	18"	39'-9"	2,045	108	9"	3'-0"	216	108	9"	4'-7"	331	7'-3"	523	23'-1"	62	50	139	1.412	321.5	1.7	201	58.2	13,061
4	7'-0"	3'-0"	8"	7"	108	#6	9"	30'-8"	4,975	162	#5	6"	7'-11"	1,338	7'-0"	1,183	108	#6	9"	26'-7"	4,312	20	18"	39'-9"	531	100	18"	39'-9"	2,655	108	9"	3'-0"	216	162	9"	4'-7"	496	7'-3"	785	30'-8"	82	64	178	1.851	412.3	2.3	260	76.3	16,751
5	7'-0"	3'-0"	8"	7"	108	#6	9"	38'-3"	6,205	162	#5	6"	7'-11"	1,338	7'-0"	1,183	108	#6	9"	34'-2"	5,542	25	18"	39'-9"	664	123	18"	39'-9"	3,266	108	9"	3'-0"	216	216	9"	4'-7"	661	7'-3"	1,046	38'-3"	102	80	223	2.290	503.0	2.8	325	94.4	20,446
6	7'-0"	3'-0"	8"	7"	108	#6	9"	45'-10"	7,435	162	#5	6"	7'-11"	1,338	7'-0"	1,183	108	#6	9"	41'-9"	6,773	30	18"	39'-9"	797	146	18"	39'-9"	3,877	108	9"	3'-0"	216	270	9"	4'-7"	827	7'-3"	1,308	45'-10"	122	94	262	2.729	593.9	3.4	384	112.6	24,138
2	7'-0"	4'-0"	8"	7"	108	#6	9"	15'-6"	2,514	162	#5	6"	8'-11"	1,507	7'-0"	1,183	108	#6	9"	11'-5"	1,852	10	18"	39'-9"	266	54	18"	39'-9"	1,434	108	9"	4'-0"	289	54	9"	4'-7"	165	9'-3"	334	15'-6"	41	34	95	1.037	238.6	1.2	136	42.6	9,680
3	7'-0"	4'-0"	8"	7"	108	#6	9"	23'-1"	3,744	162	#5	6"	8'-11"	1,507	7'-0"	1,183	108	#6	9"	19'-0"	3,082	15	18"	39'-9"	398	77	18"	39'-9"	2,045	108	9"	4'-0"	289	108	9"	4'-7"	331	9'-3"	667	23'-1"	62	50	139	1.498	331.2	1.7	201	61.6	13,447
4	7'-0"	4'-0"	8"	7"	108	#6	9"	30'-8"	4,975	162	#5	6"	8'-11"	1,507	7'-0"	1,183	108	#6	9"	26'-7"	4,312	20	18"	39'-9"	531	100	18"	39'-9"	2,655	108	9"	4'-0"	289	162	9"	4'-7"	496	9'-3"	1,001	30'-8"	82	64	178	1.959	423.7	2.3	260	80.6	17,209
5	7'-0"	4'-0"	8"	7"	108	#6	9"	38'-3"	6,205	162	#5	6"	8'-11"	1,507	7'-0"	1,183	108	#6	9"	34'-2"	5,542	25	18"	39'-9"	664	123	18"	39'-9"	3,266	108	9"	4'-0"	289	216	9"	4'-7"	661	9'-3"	1,335	38'-3"	102	80	223	2.420	516.3	2.8	325	99.6	20,977
6	7'-0"	4'-0"	8"	7"	108	#6	9"	45'-10"	7,435	162	#5	6"	8'-11"	1,507	7'-0"	1,183	108	#6	9"	41'-9"	6,773	30	18"	39'-9"	797	146	18"	39'-9"	3,877	108	9"	4'-0"	289	270	9"	4'-7"	827	9'-3"	1,668	45'-10"	122	94	262	2.881	608.9	3.4	384	118.6	24,740
2	7'-0"	5'-0"	8"	7"	108	#6	9"	15'-6"	2,514	162	#5	6"	9'-11"	1,676	7'-0"	1,183	108	#6	9"	11'-5"	1,852	10	18"	39'-9"	266	60	18"	39'-9"	1,593	108	9"	5'-0"	361	54	9"	4'-7"	165	11'-3"	406	15'-6"	41	34	95	1.102	250.4	1.2	136	45.2	10,152
3	7'-0"	5'-0"	8"	7"	108	#6	9"	23'-1"	3,744	162	#5	6"	9'-11"	1,676	7'-0"	1,183	108	#6	9"	19'-0"	3,082	15	18"	39'-9"	398	85	18"	39'-9"	2,257	108	9"	5'-0"	361	108	9"	4'-7"	331	11'-3"	812	23'-1"	62	50	139	1.584	346.1	1.7	201	65.1	14,045
4	7'-0"	5'-0"	8"	7"	108	#6	9"	30'-8"	4,975	162	#5	6"	9'-11"	1,676	7'-0"	1,183	108	#6	9"	26'-7"	4,312	20	18"	39'-9"	531	110	18"	39'-9"	2,921	108	9"	5'-0"	361	162	9"	4'-7"	496	11'-3"	1,217	30'-8"	82	64	178	2.067	441.8	2.3	260	85.0	17,932
5	7'-0"	5'-0"	8"	7"	108	#6	9"	38'-3"	6,205	162	#5	6"	9'-11"	1,676	7'-0"	1,183	108	#6	9"	34'-2"	5,542	25	18"	39'-9"	664	135	18"	39'-9"	3,585	108	9"	5'-0"	361	216	9"	4'-7"	661	11'-3"	1,623	38'-3"	102	80	223	2.549	537.5	2.8	325	104.8	21,825
6	7'-0"	5'-0"	8"	7"	108	#6	9"	45'-10"	7,435	162	#5	6"	9'-11"	1,676	7'-0"	1,183	108	#6	9"	41'-9"	6,773	30	18"	39'-9"	797	160	18"	39'-9"	4,248	108	9"	5'-0"	361	270	9"	4'-7"	827	11'-3"	2,029	45'-10"	122	94	262	3.032	633.2	3.4	384	124.7	25,713
2	7'-0"	6'-0"	8"	7"	108	#6	9"	15'-6"	2,514	162	#5	6"	10'-11"	1,845	7'-0"	1,183	108	#6	9"	11'-5"	1,852	10	18"	39'-9"	266	66	18"	39'-9"	1,752	108	9"	6'-0"	433	54	9"	4'-7"	165	13'-3"	478	15'-6"	41	34	95	1.167	262.2	1.2	136	47.8	10,624
3	7'-0"	6'-0"	8"	7"	108	#6	9"	23'-1"	3,744	162	#5	6"	10'-11"	1,845	7'-0"	1,183	108	#6	9"	19'-0"	3,082	15	18"	39'-9"	398	93	18"	39'-9"	2,469	108	9"	6'-0"	433	108	9"	4'-7"	331	13'-3"	956	23'-1"	62	50	139	1.671	361.0	1.7	201	68.6	14,642
4	7'-0"	6'-0"	8"	7"	108	#6	9"	30'-8"	4,975	162	#5	6"	10'-11"	1,845	7'-0"	1,183	108	#6	9"	26'-7"	4,312	20	18"	39'-9"	531	120	18"	39'-9"	3,186	108	9"	6'-0"	433	162	9"	4'-7"	496	13'-3"	1,434	30'-8"	82	64	178	2.175	459.9	2.3	260	89.3	18,655
5	7'-0"	6'-0"	8"	7"	108	#6	9"	38'-3"	6,205	162	#5	6"	10'-11"	1,845	7'-0"	1,183	108	#6	9"	34'-2"	5,542	25	18"	39'-9"	664	147	18"	39'-9"	3,903	108	9"	6'-0"	433	216	9"	4'-7"	661	13'-3"	1,912	38'-3"	102	80	223	2.679	558.7	2.8	325	110.0	22,673
6	7'-0"	6'-0"	8"	7"	108	#6	9"	45'-10"	7,435	162	#5	6"	10'-11"	1,845	7'-0"	1,183	108	#6	9"	41'-9"	6,773	30	18"	39'-9"	797	174	18"	39'-9"	4,620	108	9"	6'-0"	433	270	9"	4'-7"	827	13'-3"	2,390	45'-10"	122	94	262	3.183	657.6	3.4	384	130.7	26,687
2	7'-0"	7'-0"	8"	7"	108	#6	9"	15'-6"	2,514	162	#5	6"	11'-11"	2,014	7'-0"	1,183	108	#6	9"	11'-5"	1,852	10	18"	39'-9"	266	66	18"	39'-9"	1,752	108	9"	7'-0"	505	54	9"	4'-7"	165	15'-3"	550	15'-6"	41	34	95	1.231	270.0	1.2	136	50.4	10,937
3	7'-0"	7'-0"	8"	7"	108	#6	9"	23'-1"	3,744	162	#5	6"	11'-11"	2,014	7'-0"	1,183	108	#6	9"	19'-0"	3,082	15	18"	39'-9"	398	93	18"	39'-9"	2,469	108	9"	7'-0"	505	108	9"	4'-7"	331	15'-3"	1,100	23'-1"	62	50	139	1.757	370.7	1.7	201	72.0	15,027
4	7'-0"	7'-0"	8"	7"	108	#6	9"	30'-8"	4,975	162	#5	6"	11'-11"	2,014	7'-0"	1,183	108	#6	9"	26'-7"	4,312	20	18"	39'-9"	531	120	18"	39'-9"	3,186	108	9"	7'-0"	505	162	9"	4'-7"	496	15'-3"	1,650	30'-8"	82	64	178	2.283	471.3	2.3	260	93.6	19,112
5	7'-0"	7'-0"	8"	7"	108	#6	9"	38'-3"	6,205	162	#5	6"	11'-11"	2,014	7'-0"	1,183	108	#6	9"	34'-2"	5,542	25	18"	39'-9"	664	147	18"	39'-9"	3,903	108	9"	7'-0"	505	216	9"	4'-7"	661	15'-3"	2,200	38'-3"	102	80	223	2.809	571.9	2.8	325	115.2	23,202
6	7'-0"	7'-0"	8"	7"	108	#6	9"	45'-10"	7,435	162	#5	6"	11'-11"	2,014	7'-0"	1,183	108	#6	9"	41'-9"	6,773	30	18"	39'-9"	797	174	18"	39'-9"	4,620	108	9"	7'-0"	505	270	9"	4'-7"	827	15'-3"	2,750	45'-10"	122	94	262	3.334	672.6	3.4	384	136.8	27,288

 Texas Department of Transportation				Bridge Division Standard	
<b>MULTIPLE BOX CULVERTS CAST-IN-PLACE</b> 7'-0" SPAN 0' TO 10' FILL <b>MC-7-10</b>					
FILE: CD-MC710-20.dgn	DN: TBE	CK: BMP	DW: TxDOT	CK: TxDOT	
©TxDOT February 2020	CONT	SECT	JOB	HIGHWAY	
REVISIONS					
	DIST		COUNTY		SHEET NO.