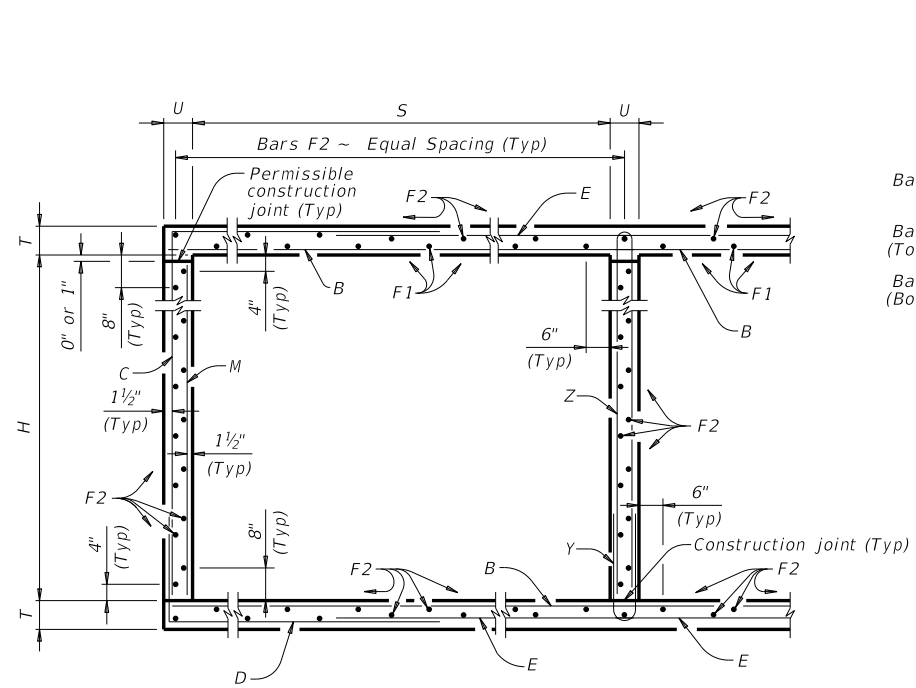
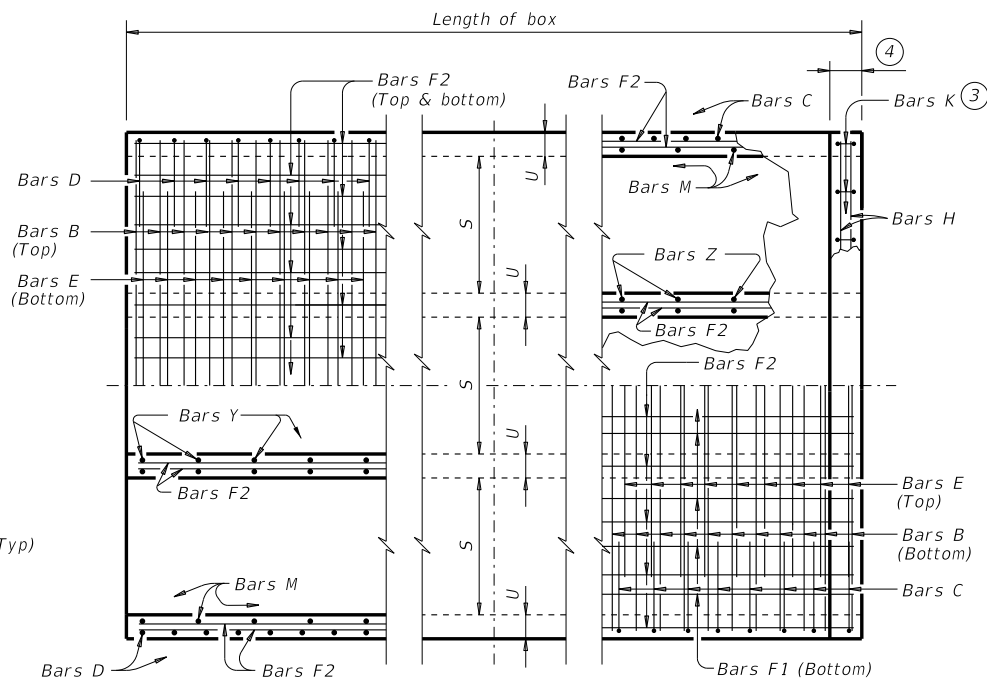


DISCLAIMER: The use of this standard is governed by the "Texas Engineering Practice Act." No warranty of any kind is made by TxDOT for any purpose whatsoever. TxDOT assumes no responsibility for the conversion of this standard to other formats or for incorrect results or damages resulting from its use.

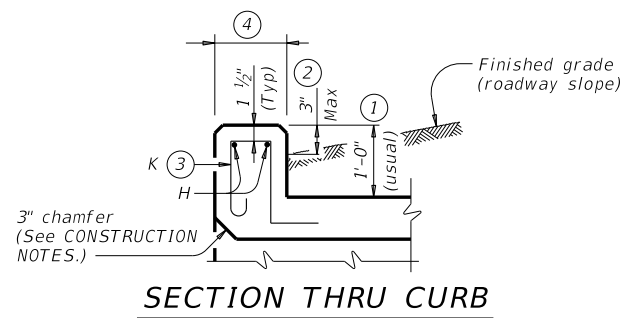
DATE: FILE:



**TYPICAL SECTION**

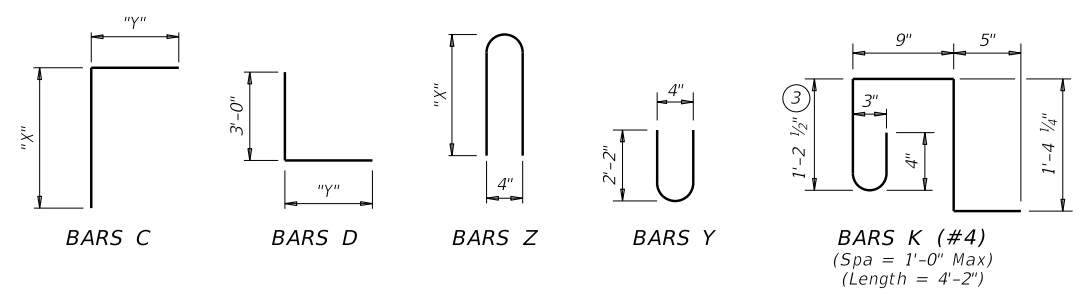


**BOTTOM SLAB**  
**TOP SLAB**  
**PART PLANS**



**SECTION THRU CURB**

TABLE OF BAR DIMENSIONS		
H	"X"	"Y"
3'-0"	3'-6 1/2"	5'-1"
4'-0"	4'-6 1/2"	5'-1"
5'-0"	5'-6 1/2"	5'-1"
6'-0"	6'-6 1/2"	5'-1"
7'-0"	7'-6 1/2"	5'-1"
8'-0"	8'-6 1/2"	5'-1"



- 0" Min to 5'-0" Max. Estimated curb heights are shown elsewhere in the plans. For structures with pedestrian rail or curbs taller than 1'-0", refer to the Extended Curb Details (ECD) standard sheet. For structures with T631 or T631LS bridge rail, refer to the Mounting Details for T631 & T631LS Rails (T631-CM) standard sheet. Refer to the Rail Anchorage Curb (RAC) standard sheet for structures with bridge rail other than T631 or T631LS.
- For vehicle safety, the following requirements must be met:
  - For structures without bridge rail, construct curbs no more than 3" above finished grade.
  - For structures with bridge rail, construct curbs flush with finished grade. Reduce curb heights, if necessary, to meet the above requirements. No changes will be made in quantities and no additional compensation will be allowed for this work.
- For curbs less than 1'-0" high, tilt Bars K or reduce bar height as necessary to maintain cover. For curbs less than 3" high, Bars K may be omitted.
- 1'-0" typical. 2'-3" when the Rail Anchorage Curb (RAC) standard sheet is referred to elsewhere in the plans.

The Contractor may replace Bars B, C, D, E, F1, F2, M, Y, and/or Z with deformed welded wire reinforcement (WWR) meeting the requirements of ASTM A1064. The area of required reinforcement may be reduced by the ratio of 60 ksi / 70 ksi. Spacing of WWR is limited to 4" Min and 18" Max. When required, provide lap splices in the WWR of the same length required for the equivalent bar size, rounded up for wire sizes between conventional bar sizes. The lap length required for WWR is never less than the lap length required for uncoated #4 bars.

Example conversion: Replacing No. 6 Gr 60 at 6" Spacing with WWR  
 Required WWR = (0.44 sq. in. per 0.5 ft.) x (60 ksi / 70 ksi) = 0.755 sq. in. per ft.  
 If D30.6 wire is used to meet the 0.755 sq. in. per ft. requirement in this example, the required spacing = (0.306 sq. in.) / (0.755 sq. in. per ft.) x (12 in. per ft.) = 4.86" Max spacing. Required lap length for the provided D30.6 wire is 2'-1" (the same minimum lap length required for uncoated #5 bars, as listed under MATERIAL NOTES).

**CONSTRUCTION NOTES:**  
 Do not use permanent forms.  
 Chamfer the bottom edge of the top slab 3" at the entrance.  
 Optionally, raise construction joints shown at the flow line by a maximum of 6". If this option is taken, Bars M may be cut off or raised, Bars C and D may be reversed, and Bars Y and Z may be reversed.

**MATERIAL NOTES:**  
 Provide Grade 60 reinforcing steel.  
 Provide galvanized reinforcing steel if required elsewhere in the plans.  
 Provide Class C concrete (f'c = 3,600 psi) for culvert barrel and curb, with the following exceptions: provide Class S concrete (f'c = 4,000 psi) for top slabs of:  
 • culverts with overlay,  
 • culverts with 1-to-2 course surface treatment, or  
 • culverts with the top slab as the final riding surface.  
 Provide bar laps, where required, as follows:  
 • Uncoated or galvanized ~ #4 = 1'-8" Min  
 • Uncoated or galvanized ~ #5 = 2'-1" Min  
 • Uncoated or galvanized ~ #6 = 2'-6" Min

**GENERAL NOTES:**  
 Designed according to AASHTO LRFD Bridge Design Specifications for the range of fill heights shown.  
 See the Multiple Box Culverts Cast-In-Place Miscellaneous Detail (MC-MD) standard sheet for details pertaining to skewed ends, angle sections, and lengthening.

Cover dimensions are clear dimensions, unless noted otherwise.  
 Reinforcing bar dimensions shown are out-to-out of bar.

HL93 LOADING SHEET 1 OF 2

**Texas Department of Transportation**  
Bridge Division Standard

## MULTIPLE BOX CULVERTS CAST-IN-PLACE

8'-0" SPAN  
0' TO 13' FILL  
MC-8-13

FILE: CD-MC813-20.dgn	DN: TBE	CK: BMP	DW: TxDOT	CK: TxDOT
©TxDOT February 2020	CONT	SECT	JOB	HIGHWAY
REVISIONS				
DIST	COUNTY			SHEET NO.

DISCLAIMER: The use of this standard is governed by the "Texas Engineering Practice Act." No warranty of any kind is made by TxDOT for any purpose whatsoever. TxDOT assumes no responsibility for the conversion of this standard to other formats or for incorrect results or damages resulting from its use.

DATE:  
FILE:

NUMBER OF SPANS	SECTION DIMENSIONS				BILLS OF REINFORCING STEEL (For Box Length = 40 feet)																								QUANTITIES																								
					Bars B				Bars C & D				Bars E				Bars F1 ~ #4			Bars F2 ~ #4			Bars M ~ #4			Bars Y & Z ~ #4				Bars H 4 ~ #4		Bars K		Per Foot of Barrel		Curb		Total															
	S	H	T	U	No.	Size	Spa	Length	Wt	No.	Size	Spa	Bars C		Bars D		No.	Size	Spa	Length	Wt	No.	Spa	Length	Wt	No.	Spa	Length	Wt	No.	Spa	Length	Wt	No.	Spa	Length	Wt	No.	Spa	Bars Y		Bars Z		Length	Wt	No.	Wt	Conc (CY)	Ref (Lb)	Conc (CY)	Ref (Lb)	Conc (CY)	Ref (Lb)
													Length	Wt	Length	Wt																								Length	Wt	Length	Wt										
2	8'-0"	3'-0"	8"	7"	162	#6	6"	17'-6"	4,258	108	#6	9"	8'-8"	1,406	8'-2"	1,325	162	#6	6"	12'-9"	3,102	12	18"	39'-9"	319	56	18"	39'-9"	1,487	108	9"	3'-0"	216	54	9"	4'-7"	165	7'-3"	262	17'-6"	47	38	106	1.071	313.5	1.3	153	44.2	12,693				
3	8'-0"	3'-0"	8"	7"	162	#6	6"	26'-1"	6,347	108	#6	9"	8'-8"	1,406	8'-2"	1,325	162	#6	6"	21'-4"	5,191	18	18"	39'-9"	478	80	18"	39'-9"	2,124	108	9"	3'-0"	216	108	9"	4'-7"	331	7'-3"	523	26'-1"	70	56	156	1.560	448.5	1.9	226	64.3	18,167				
4	8'-0"	3'-0"	8"	7"	162	#6	6"	34'-8"	8,435	108	#6	9"	8'-8"	1,406	8'-2"	1,325	162	#6	6"	29'-11"	7,279	24	18"	39'-9"	637	104	18"	39'-9"	2,762	108	9"	3'-0"	216	162	9"	4'-7"	496	7'-3"	785	34'-8"	93	72	200	2.048	583.5	2.6	293	84.5	23,634				
5	8'-0"	3'-0"	8"	7"	162	#6	6"	43'-3"	10,524	108	#6	9"	8'-8"	1,406	8'-2"	1,325	162	#6	6"	38'-6"	9,368	30	18"	39'-9"	797	128	18"	39'-9"	3,399	108	9"	3'-0"	216	216	9"	4'-7"	661	7'-3"	1,046	43'-3"	116	90	251	2.537	718.6	3.2	367	104.7	29,109				
6	8'-0"	3'-0"	8"	7"	162	#6	6"	51'-10"	12,612	108	#6	9"	8'-8"	1,406	8'-2"	1,325	162	#6	6"	47'-1"	11,457	36	18"	39'-9"	956	152	18"	39'-9"	4,036	108	9"	3'-0"	216	270	9"	4'-7"	827	7'-3"	1,308	51'-10"	138	106	295	3.026	853.6	3.8	433	124.9	34,576				
2	8'-0"	4'-0"	8"	7"	162	#6	6"	17'-6"	4,258	108	#6	9"	9'-8"	1,568	8'-2"	1,325	162	#6	6"	12'-9"	3,102	12	18"	39'-9"	319	56	18"	39'-9"	1,487	108	9"	4'-0"	289	54	9"	4'-7"	165	9'-3"	334	17'-6"	47	38	106	1.136	321.2	1.3	153	46.8	13,000				
3	8'-0"	4'-0"	8"	7"	162	#6	6"	26'-1"	6,347	108	#6	9"	9'-8"	1,568	8'-2"	1,325	162	#6	6"	21'-4"	5,191	18	18"	39'-9"	478	80	18"	39'-9"	2,124	108	9"	4'-0"	289	108	9"	4'-7"	331	9'-3"	667	26'-1"	70	56	156	1.646	458.0	1.9	226	67.8	18,546				
4	8'-0"	4'-0"	8"	7"	162	#6	6"	34'-8"	8,435	108	#6	9"	9'-8"	1,568	8'-2"	1,325	162	#6	6"	29'-11"	7,279	24	18"	39'-9"	637	104	18"	39'-9"	2,762	108	9"	4'-0"	289	162	9"	4'-7"	496	9'-3"	1,001	34'-8"	93	72	200	2.156	594.8	2.6	293	88.8	24,085				
5	8'-0"	4'-0"	8"	7"	162	#6	6"	43'-3"	10,524	108	#6	9"	9'-8"	1,568	8'-2"	1,325	162	#6	6"	38'-6"	9,368	30	18"	39'-9"	797	128	18"	39'-9"	3,399	108	9"	4'-0"	289	216	9"	4'-7"	661	9'-3"	1,335	43'-3"	116	90	251	2.667	731.7	3.2	367	109.9	29,633				
6	8'-0"	4'-0"	8"	7"	162	#6	6"	51'-10"	12,612	108	#6	9"	9'-8"	1,568	8'-2"	1,325	162	#6	6"	47'-1"	11,457	36	18"	39'-9"	956	152	18"	39'-9"	4,036	108	9"	4'-0"	289	270	9"	4'-7"	827	9'-3"	1,668	51'-10"	138	106	295	3.177	868.5	3.8	433	130.9	35,171				
2	8'-0"	5'-0"	8"	7"	162	#6	6"	17'-6"	4,258	108	#6	9"	10'-8"	1,730	8'-2"	1,325	162	#6	6"	12'-9"	3,102	12	18"	39'-9"	319	62	18"	39'-9"	1,646	108	9"	5'-0"	361	54	9"	4'-7"	165	11'-3"	406	17'-6"	47	38	106	1.201	332.8	1.3	153	49.4	13,465				
3	8'-0"	5'-0"	8"	7"	162	#6	6"	26'-1"	6,347	108	#6	9"	10'-8"	1,730	8'-2"	1,325	162	#6	6"	21'-4"	5,191	18	18"	39'-9"	478	88	18"	39'-9"	2,337	108	9"	5'-0"	361	108	9"	4'-7"	331	11'-3"	812	26'-1"	70	56	156	1.733	472.8	1.9	226	71.3	19,138				
4	8'-0"	5'-0"	8"	7"	162	#6	6"	34'-8"	8,435	108	#6	9"	10'-8"	1,730	8'-2"	1,325	162	#6	6"	29'-11"	7,279	24	18"	39'-9"	637	114	18"	39'-9"	3,027	108	9"	5'-0"	361	162	9"	4'-7"	496	11'-3"	1,217	34'-8"	93	72	200	2.264	612.7	2.6	293	93.1	24,800				
5	8'-0"	5'-0"	8"	7"	162	#6	6"	43'-3"	10,524	108	#6	9"	10'-8"	1,730	8'-2"	1,325	162	#6	6"	38'-6"	9,368	30	18"	39'-9"	797	140	18"	39'-9"	3,717	108	9"	5'-0"	361	216	9"	4'-7"	661	11'-3"	1,623	43'-3"	116	90	251	2.796	752.7	3.2	367	115.1	30,473				
6	8'-0"	5'-0"	8"	7"	162	#6	6"	51'-10"	12,612	108	#6	9"	10'-8"	1,730	8'-2"	1,325	162	#6	6"	47'-1"	11,457	36	18"	39'-9"	956	166	18"	39'-9"	4,408	108	9"	5'-0"	361	270	9"	4'-7"	827	11'-3"	2,029	51'-10"	138	106	295	3.328	892.6	3.8	433	137.0	36,138				
2	8'-0"	6'-0"	8"	7"	162	#6	6"	17'-6"	4,258	108	#6	9"	11'-8"	1,893	8'-2"	1,325	162	#6	6"	12'-9"	3,102	12	18"	39'-9"	319	68	18"	39'-9"	1,806	108	9"	6'-0"	433	54	9"	4'-7"	165	13'-3"	478	17'-6"	47	38	106	1.265	344.5	1.3	153	51.9	13,932				
3	8'-0"	6'-0"	8"	7"	162	#6	6"	26'-1"	6,347	108	#6	9"	11'-8"	1,893	8'-2"	1,325	162	#6	6"	21'-4"	5,191	18	18"	39'-9"	478	96	18"	39'-9"	2,549	108	9"	6'-0"	433	108	9"	4'-7"	331	13'-3"	956	26'-1"	70	56	156	1.819	487.6	1.9	226	74.7	19,729				
4	8'-0"	6'-0"	8"	7"	162	#6	6"	34'-8"	8,435	108	#6	9"	11'-8"	1,893	8'-2"	1,325	162	#6	6"	29'-11"	7,279	24	18"	39'-9"	637	124	18"	39'-9"	3,293	108	9"	6'-0"	433	162	9"	4'-7"	496	13'-3"	1,434	34'-8"	93	72	200	2.372	630.6	2.6	293	97.5	25,518				
5	8'-0"	6'-0"	8"	7"	162	#6	6"	43'-3"	10,524	108	#6	9"	11'-8"	1,893	8'-2"	1,325	162	#6	6"	38'-6"	9,368	30	18"	39'-9"	797	152	18"	39'-9"	4,036	108	9"	6'-0"	433	216	9"	4'-7"	661	13'-3"	1,912	43'-3"	116	90	251	2.926	773.7	3.2	367	120.3	31,316				
6	8'-0"	6'-0"	8"	7"	162	#6	6"	51'-10"	12,612	108	#6	9"	11'-8"	1,893	8'-2"	1,325	162	#6	6"	47'-1"	11,457	36	18"	39'-9"	956	180	18"	39'-9"	4,780	108	9"	6'-0"	433	270	9"	4'-7"	827	13'-3"	2,390	51'-10"	138	106	295	3.479	916.8	3.8	433	143.0	37,106				
2	8'-0"	7'-0"	8"	7"	162	#6	6"	17'-6"	4,258	108	#6	9"	12'-8"	2,055	8'-2"	1,325	162	#6	6"	12'-9"	3,102	12	18"	39'-9"	319	68	18"	39'-9"	1,806	108	9"	7'-0"	505	54	9"	4'-7"	165	15'-3"	550	17'-6"	47	38	106	1.330	352.1	1.3	153	54.5	14,238				
3	8'-0"	7'-0"	8"	7"	162	#6	6"	26'-1"	6,347	108	#6	9"	12'-8"	2,055	8'-2"	1,325	162	#6	6"	21'-4"	5,191	18	18"	39'-9"	478	96	18"	39'-9"	2,549	108	9"	7'-0"	505	108	9"	4'-7"	331	15'-3"	1,100	26'-1"	70	56	156	1.905	497.0	1.9	226	78.1	20,107				
4	8'-0"	7'-0"	8"	7"	162	#6	6"	34'-8"	8,435	108	#6	9"	12'-8"	2,055	8'-2"	1,325	162	#6	6"	29'-11"	7,279	24	18"	39'-9"	637	124	18"	39'-9"	3,293	108	9"	7'-0"	505	162	9"	4'-7"	496	15'-3"	1,650	34'-8"	93	72	200	2.480	641.9	2.6	293	101.8	25,968				
5	8'-0"	7'-0"	8"	7"	162	#6	6"	43'-3"	10,524	108	#6	9"	12'-8"	2,055	8'-2"	1,325	162	#6	6"	38'-6"	9,368	30	18"	39'-9"	797	152	18"	39'-9"	4,036	108	9"	7'-0"	505	216	9"	4'-7"	661	15'-3"	2,200	43'-3"	116	90	251	3.056	786.8	3.2	367	125.5	31,838				
6	8'-0"	7'-0"	8"	7"	162	#6	6"	51'-10"	12,612	108	#6	9"	12'-8"	2,055	8'-2"	1,325	162	#6	6"	47'-1"	11,457	36	18"	39'-9"	956	180	18"	39'-9"	4,780	108	9"	7'-0"	505	270	9"	4'-7"	827	15'-3"	2,750	51'-10"	138	106	295	3.631	931.7	3.8	433	149.1	37,700				
2	8'-0"	8'-0"	8"	7"	162	#6	6"	17'-6"	4,258	108	#6	9"	13'-8"	2,217	8'-2"	1,325	162	#6	6"	12'-9"	3,102	12	18"	39'-9"	319	74	18"	39'-9"	1,965	108	9"	8'-0"	577	54	9"	4'-7"	165	17'-3"	622	17'-6"	47	38	106	1.395	363.8	1.3	153	57.1	14,703				
3	8'-0"	8'-0"	8"	7"	162	#6	6"	26'-1"	6,347	108	#6	9"	13'-8"	2,217	8'-2"	1,325	162	#6	6"	21'-4"	5,191	18	18"	39'-9"	478	104	18"	39'-9"	2,762	108	9"	8'-0"	577	108	9"	4'-7"	331	17'-3"	1,244	26'-1"	70	56	156	1.992	511.8	1.9	226	81.6	20,698				
4	8'-0"	8'-0"	8"	7"	162	#6	6"	34'-8"	8,435	108	#6	9"	13'-8"	2,217	8'-2"	1,325	162	#6	6"	29'-11"	7,279	24	18"	39'-9"	637	134	18"	39'-9"	3,558	108	9"	8'-0"	577	162	9"	4'-7"	496	17'-3"	1,867	34'-8"	93	72	200	2.588	659.8	2.6	293						