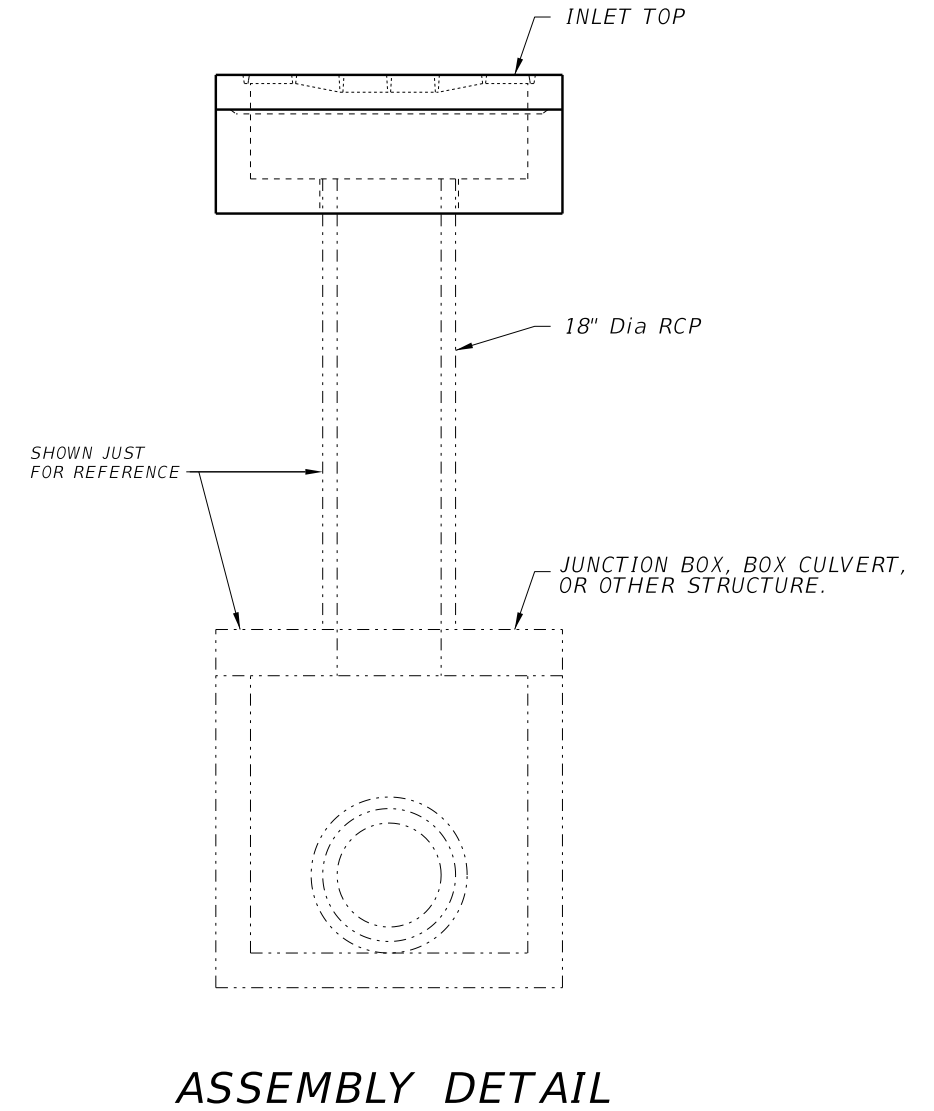
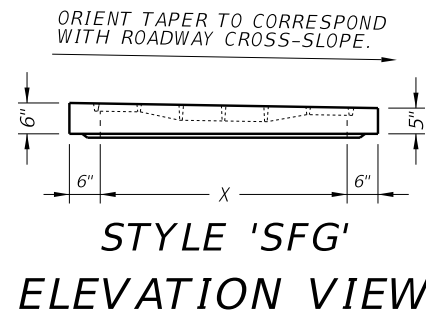
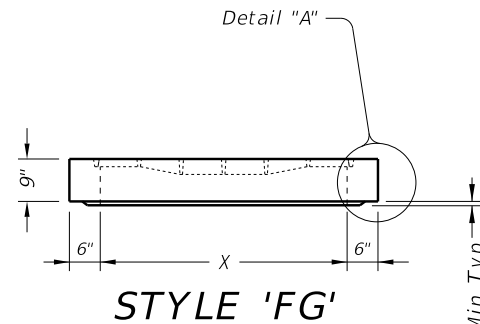
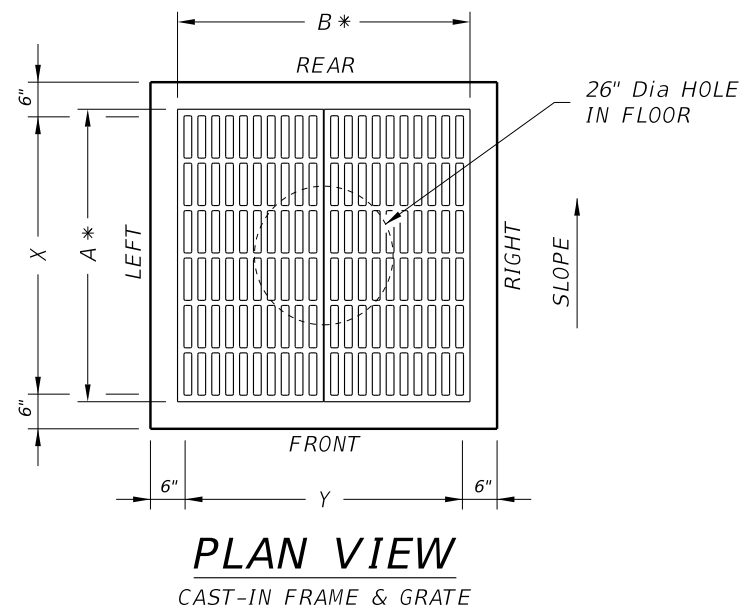
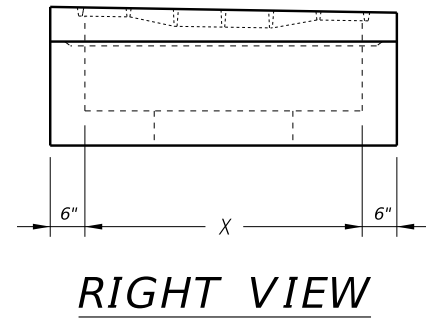
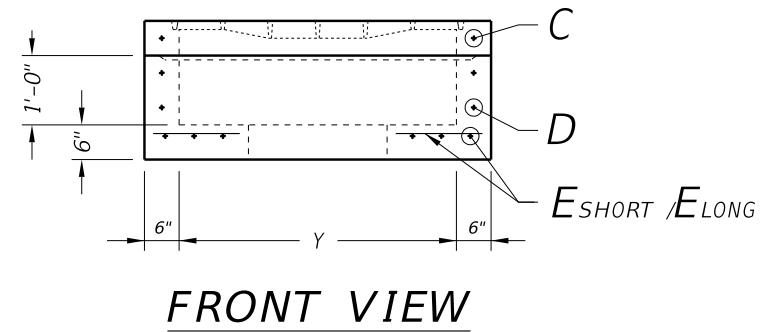
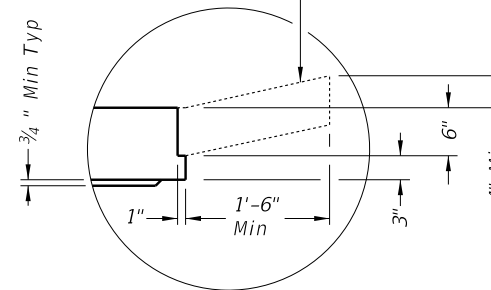


DISCLAIMER: This standard is governed by the "Texas Engineering Practice Act." No warranty of any kind is made by TxDOT for any purpose whatsoever. TxDOT assumes no responsibility for the conversion of this standard to other formats or for incorrect results or damages resulting from its use.



Construct cast-in-place reinforced concrete apron, when shown elsewhere in plans. Use Class "A" concrete. Apron is subsidiary to POD. Apron is 1'-6" Min width around precast overpass drain.



**DETAIL "A"**  
(Reinforcing not shown for clarity)  
When an apron is to be cast around POD, use detail above to create an apron ledge on all 4 sides.

**FABRICATION NOTES:**

1. Provide Class "H" concrete in accordance with Item 421 and having a minimum compressive strength of 5,000 psi.
2. Provide Grade 60 reinforcing steel or equivalent area of WWR.
3. Provide clear cover of 1 1/2" to reinforcing steel from inside surfaces. Place short span reinforcing steel closest to surface.
4. Design tongue and groove joints for full closure on both shoulders. Minimum spigot depth is 3/4".
5. Provide lifting devices in conformance with Manufacturer's recommendations.
6. Place additional diagonal #4 bars, length = Dia + 4", at 1" clear cover around opening in floor.
7. Provide cast iron standard grate, unless noted otherwise elsewhere in plans.

**INSTALLATION NOTES:**

1. Seal tongue and groove joints with preformed or bulk mastic in conformance with Manufacturer's recommendation. Tongue and groove joints may be grouted no more than 1" between each section, or 1/2 the joint depth, whichever is greater.
2. Do not grout rubber gasket joints without Manufacturer's recommendation.
3. Orient long dimension of grate slots perpendicular to direction of traffic, unless noted otherwise on plans.

**GENERAL NOTES:**

1. Designed according to ASTM C913.
2. Precast Overpass Drain may connect into junction box, box culvert, or other new or existing structure. See details for connecting 18" Dia RCP into structure elsewhere.
3. Payment for inlet is per Item 465, "Junction Boxes, Manholes, and Inlets" by type, style, and size.

Style	Size (X x Y)	A x B*	C	D	E Short	E Long
FG	3'x3'	3'x3'	0.37 in <sup>2</sup> /ft	0.18 in <sup>2</sup> /ft	0.18 in <sup>2</sup> /ft	0.18 in <sup>2</sup> /ft
SFG	3'x3'	3'x3'	0.32 in <sup>2</sup> /ft	0.18 in <sup>2</sup> /ft	0.18 in <sup>2</sup> /ft	0.18 in <sup>2</sup> /ft
FG	4'x4'	4'x4'	0.41 in <sup>2</sup> /ft	0.18 in <sup>2</sup> /ft	0.21 in <sup>2</sup> /ft	0.21 in <sup>2</sup> /ft
SFG	4'x4'	4'x4'	0.32 in <sup>2</sup> /ft	0.18 in <sup>2</sup> /ft	0.21 in <sup>2</sup> /ft	0.21 in <sup>2</sup> /ft
FG	3'x5'	3'x5'	0.48 in <sup>2</sup> /ft	0.18 in <sup>2</sup> /ft	0.22 in <sup>2</sup> /ft	0.18 in <sup>2</sup> /ft
SFG	3'x5'	3'x5'	0.32 in <sup>2</sup> /ft	0.18 in <sup>2</sup> /ft	0.22 in <sup>2</sup> /ft	0.18 in <sup>2</sup> /ft

\*Nominal frame and grate size.

HL93 LOADING



**PRECAST OVERPASS DRAIN**

**POD**

FILE: CD-POD-20.dgn	DN: TxDOT	CK: TxDOT	DW: TxDOT	CK: TxDOT
©TxDOT February 2020	CONT	SECT	JOB	HIGHWAY
REVISIONS				
	DIST	COUNTY		SHEET NO.

DATE:  
FILE: