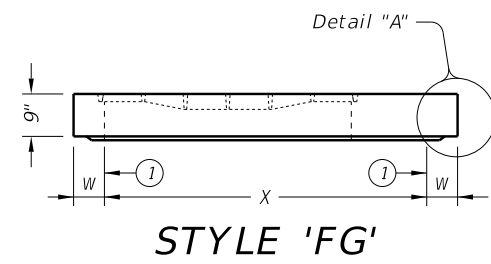
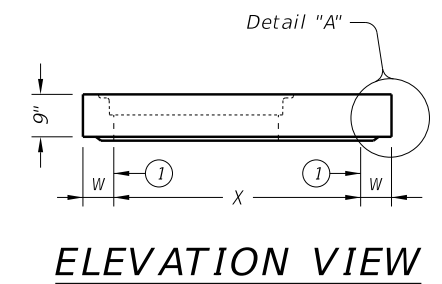
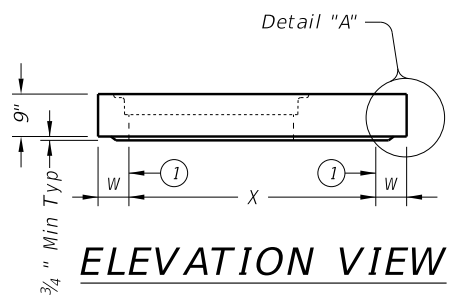
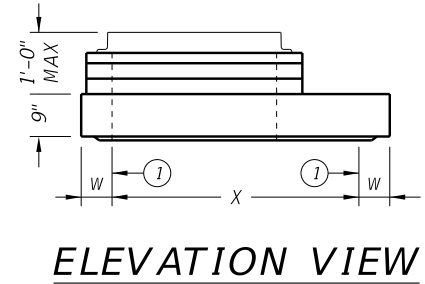
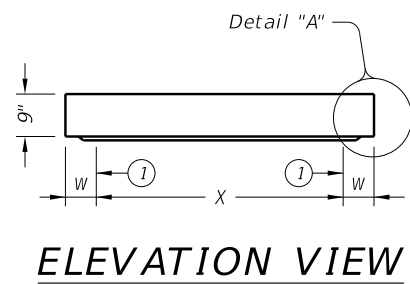
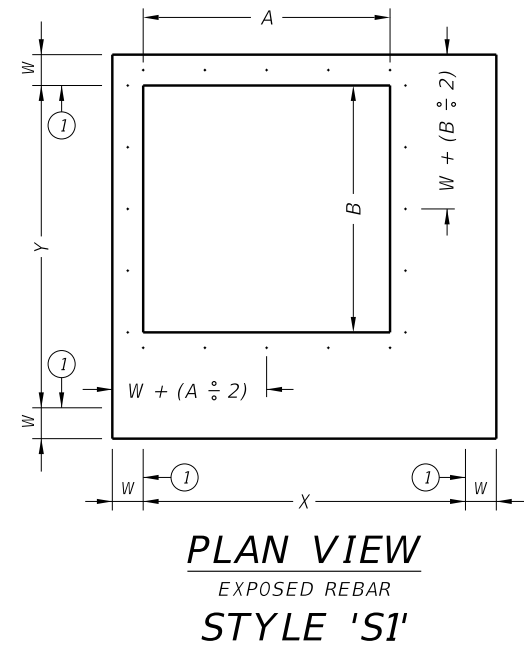
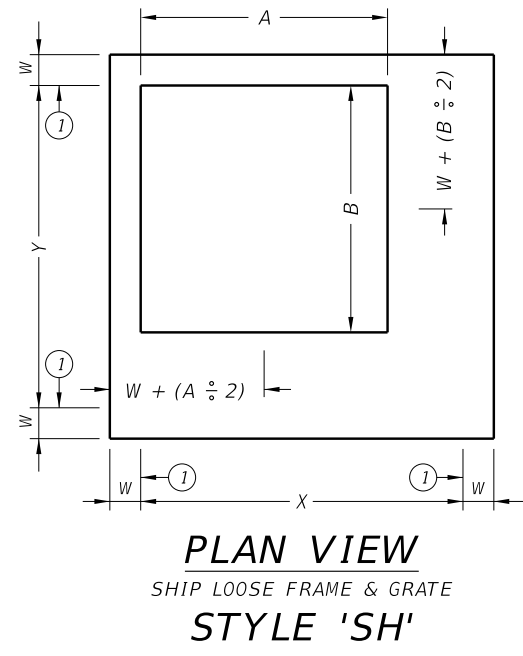
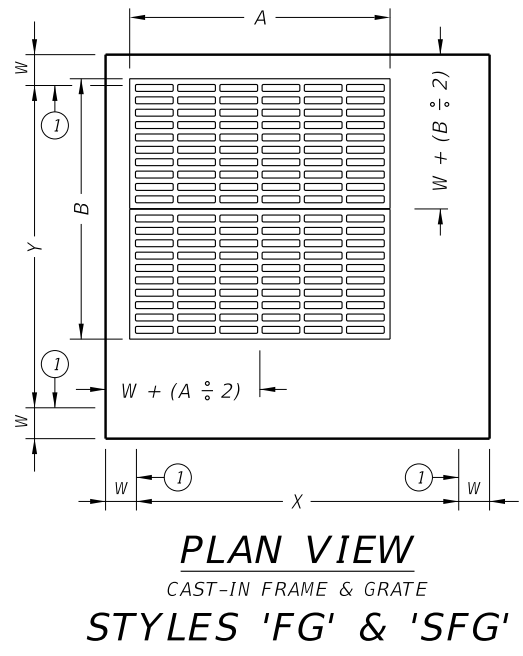
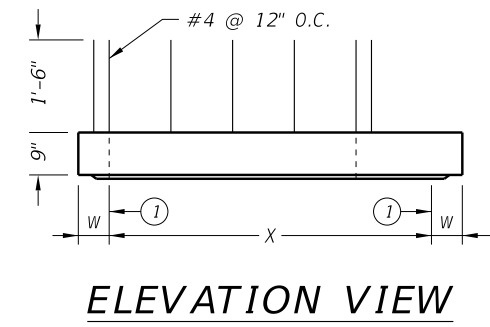
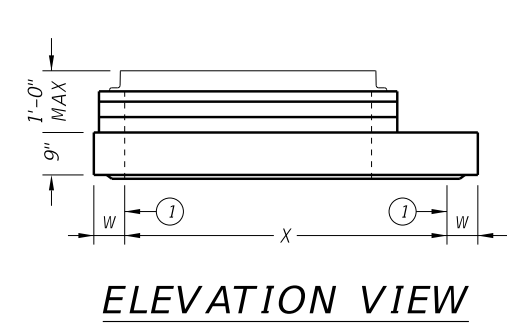
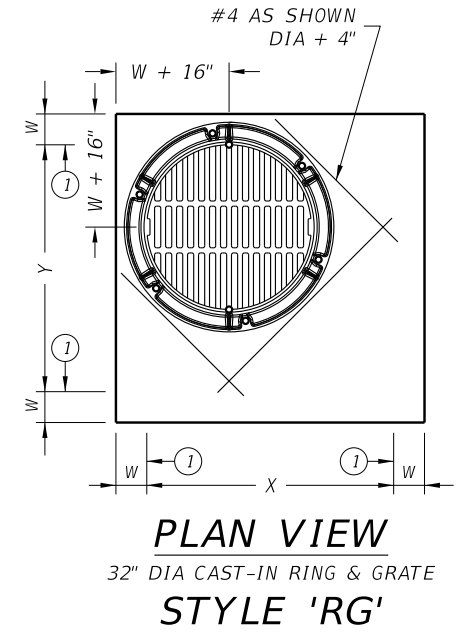
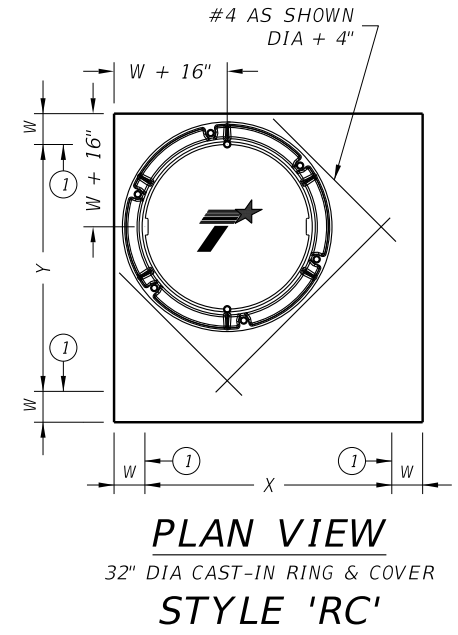
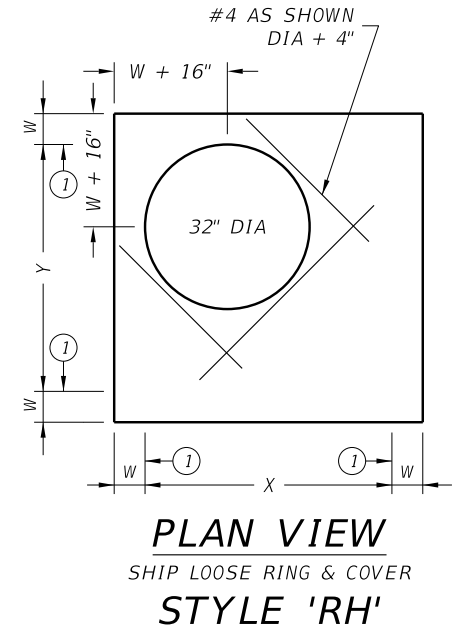
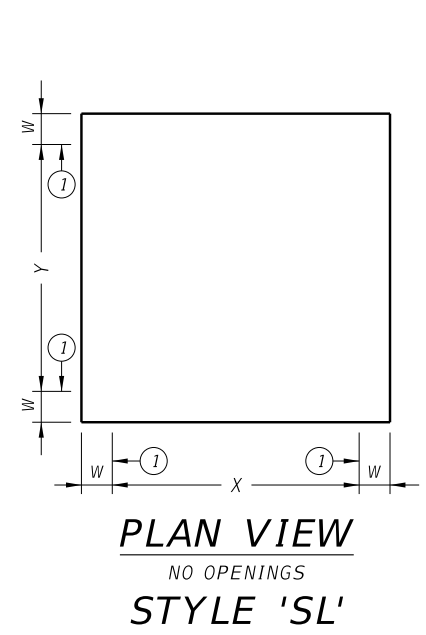
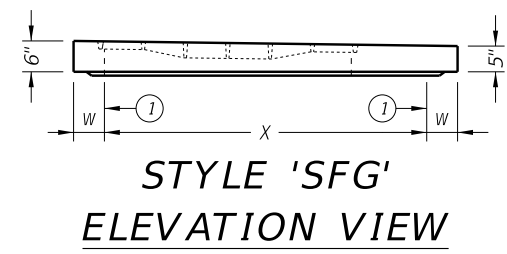


DISCLAIMER: The use of this standard is governed by the "Texas Engineering Practice Act." No warranty of any kind is made by TxDOT for any purpose whatsoever. TxDOT assumes no responsibility for the conversion of this standard to other formats or for incorrect results or damages resulting from its use.



ORIENT TAPER TO CORRESPOND WITH ROADWAY CROSS-SLOPE.



① Matches inside face of wall of precast base or riser below inlet.

HL93 LOADING SHEET 1 OF 2

Texas Department of Transportation Bridge Division Standard

PRECAST SLAB LID

PSL

FILE: CD-PSL-20.dgn	DN: TxDOT	CK: TxDOT	DW: TxDOT	CK: TxDOT
©TxDOT February 2020	CONT	SECT	JOB	HIGHWAY
REVISIONS	DIST		COUNTY	SHEET NO.

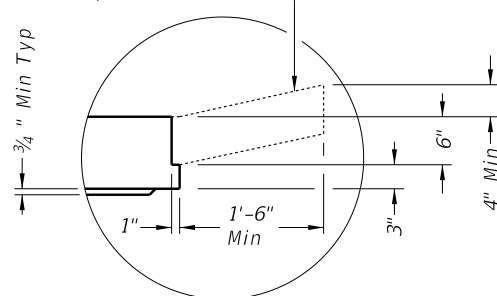
DATE: FILE:

DISCLAIMER:
The use of this standard is governed by the "Texas Engineering Practice Act." No warranty of any kind is made by TxDOT for any purpose whatsoever. TxDOT assumes no responsibility for the conversion of this standard to other formats or for incorrect results or damages resulting from its use.

Style	Size (X x Y)	W ^②	A x B (nominal)	Short Span Reinf Steel Area	Long Span Reinf Steel Area
SL	3'x3'	6"	n/a	0.37 in ² /ft	0.37 in ² /ft
RH,RC,RG,SH,S1,FG	3'x3'	6"	3'x3' or 32" Dia	0.37 in ² /ft	0.37 in ² /ft
SFG	3'x3'	6"	3'x3'	0.32 in ² /ft	0.32 in ² /ft
SL	4'x4'	6"	n/a	0.34 in ² /ft	0.34 in ² /ft
RH,RC,RG,SH,S1,FG	4'x4'	6"	3'x3' or 32" Dia	0.41 in ² /ft	0.41 in ² /ft
SH,S1,FG	4'x4'	6"	4'x4'	0.41 in ² /ft	0.41 in ² /ft
SFG	4'x4'	6"	4'x4'	0.32 in ² /ft	0.32 in ² /ft
SL	3'x5'	6"	n/a	0.39 in ² /ft	0.39 in ² /ft
RH,RC,RG,SH,S1,FG	3'x5'	6"	3'x3' or 32" Dia	0.48 in ² /ft	0.48 in ² /ft
SH,S1,FG	3'x5'	6"	3'x5'	0.48 in ² /ft	0.48 in ² /ft
SFG	3'x5'	6"	3'x5'	0.32 in ² /ft	0.32 in ² /ft
SL	4'x5'	6"	n/a	0.42 in ² /ft	0.42 in ² /ft
RH,RC,RG,SH,S1,FG	4'x5'	6"	3'x3' or 32" Dia	0.42 in ² /ft	0.42 in ² /ft
SH,S1,FG	4'x5'	6"	4'x4'	0.63 in ² /ft	0.63 in ² /ft
SH,S1,FG	4'x5'	6"	3'x5'	0.66 in ² /ft	0.66 in ² /ft
SL	5'x5'	6"	n/a	0.36 in ² /ft	0.36 in ² /ft
RH,RC,RG,SH,S1,FG	5'x5'	6"	3'x3' or 32" Dia	0.43 in ² /ft	0.43 in ² /ft
SH,S1,FG	5'x5'	6"	4'x4'	0.63 in ² /ft	0.63 in ² /ft
SH,S1,FG	5'x5'	6"	3'x5'	0.63 in ² /ft	0.63 in ² /ft
SL	5'x6'	6"/8"	n/a	0.48 in ² /ft	0.48 in ² /ft
RH,RC,RG,SH,S1,FG	5'x6'	6"/8"	3'x3' or 32" Dia	0.48 in ² /ft	0.48 in ² /ft
SH,S1,FG	5'x6'	6"/8"	4'x4'	0.60 in ² /ft	0.60 in ² /ft
SH,S1,FG	5'x6'	6"/8"	3'x5'	0.60 in ² /ft	0.60 in ² /ft
SL	6'x6'	6"/8"	n/a	0.43 in ² /ft	0.43 in ² /ft
RH,RC,RG,SH,S1,FG	6'x6'	6"/8"	3'x3' or 32" Dia	0.56 in ² /ft	0.56 in ² /ft
SH,S1,FG	6'x6'	6"/8"	4'x4'	0.56 in ² /ft	0.56 in ² /ft
SH,S1,FG	6'x6'	6"/8"	3'x5'	0.59 in ² /ft	0.59 in ² /ft
SL	8'x8'	8"/10"	n/a	0.45 in ² /ft	0.45 in ² /ft
RH,RC,RG,SH,S1,FG	8'x8'	8"/10"	3'x3' or 32" Dia	0.45 in ² /ft	0.45 in ² /ft
SH,S1,FG	8'x8'	8"/10"	4'x4'	0.45 in ² /ft	0.45 in ² /ft
SH,S1,FG	8'x8'	8"/10"	3'x5'	0.45 in ² /ft	0.45 in ² /ft

② See sheet PDD for corresponding wall thickness (W) of base unit or riser.

Construct cast-in-place reinforced concrete apron, when shown elsewhere in plans. Use Class "A" concrete. Apron is subsidiary to PSL. Apron is 1'-6" Min width around precast zone drain.



DETAIL "A"

(Reinforcing not shown for clarity)

When an apron is to be cast around PSL, use detail above to create an apron ledge on all 4 sides.

FABRICATION NOTES:

1. Locate penetration (Style 'RH'), ring and cover (Style 'RC'), ring and grate (Style 'RG'), and frame and grate (Style 'FG') in a corner. Only one penetration is allowed per slab lid.
2. Provide Class "H" concrete in accordance with Item 421 and having a minimum compressive strength of 5,000 psi.
3. Provide Grade 60 reinforcing steel or equivalent area of WWR.
4. Provide clear cover of 3/4" to reinforcing from lower outside shoulder of slab for structural reinforcement, and 2" from top of slab for shrinkage and temperature reinforcement. Place short span reinforcing closest to surface.
5. Slabs with a thickness of 8" or greater require shrinkage and temperature reinforcing. Provide steel area = 0.11 in²/ft each way.
6. No substitution is allowed for diagonal #4 bars around openings.
7. Design tongue and groove joints for full closure on both shoulders. Minimum spigot depth is 3/4".
8. Provide lifting devices in conformance with Manufacturer's recommendations.

INSTALLATION NOTES:

1. Precast slab lids are intended for direct traffic and may be placed in roadway.
2. Seal tongue and groove joints with preformed or bulk mastic in conformance with Manufacturer's recommendations. Tongue and groove joints may be grouted no more than 1" between each section, or 1/2 the joint depth, whichever is greater.
3. Do not grout rubber gasket joints without Manufacturer's recommendation.
4. Initial installation of grade adjustment rings for Styles 'RH' and 'SH' is limited to 1'-0" Max as shown.
5. Grade adjustment rings for Styles 'RH' and 'SH' may be increased to 2'-0" Max when future construction affects final grade of structure. Make adjustments greater than 2'-0" with additional risers. Adjustments can be made up to Max depth shown on sheet PDD. Structure must be evaluated if Max depth will be exceeded.
6. Orient long dimension of grate slots perpendicular to traffic, unless noted otherwise on plans.

GENERAL NOTES:

1. Designed according to ASTM C913.
2. Payment for lid is per Item 465, "Junction Boxes, Manholes, and Inlets" by type, style, size, and opening size (when applicable).

Cover dimensions are clear dimensions, unless noted otherwise.

HL93 LOADING

SHEET 2 OF 2



PRECAST SLAB LID

PSL

FILE: CD-PSL-20.dgn	DN: TxDOT	CK: TxDOT	DW: TxDOT	CK: TxDOT
©TxDOT February 2020	CONT	SECT	JOB	HIGHWAY
REVISIONS				
	DIST	COUNTY		SHEET NO.

DATE:
FILE: