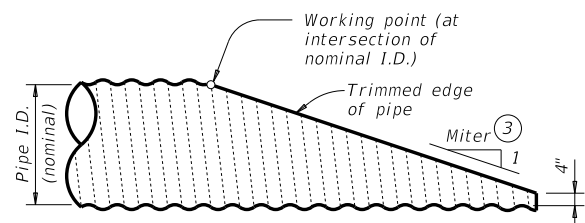


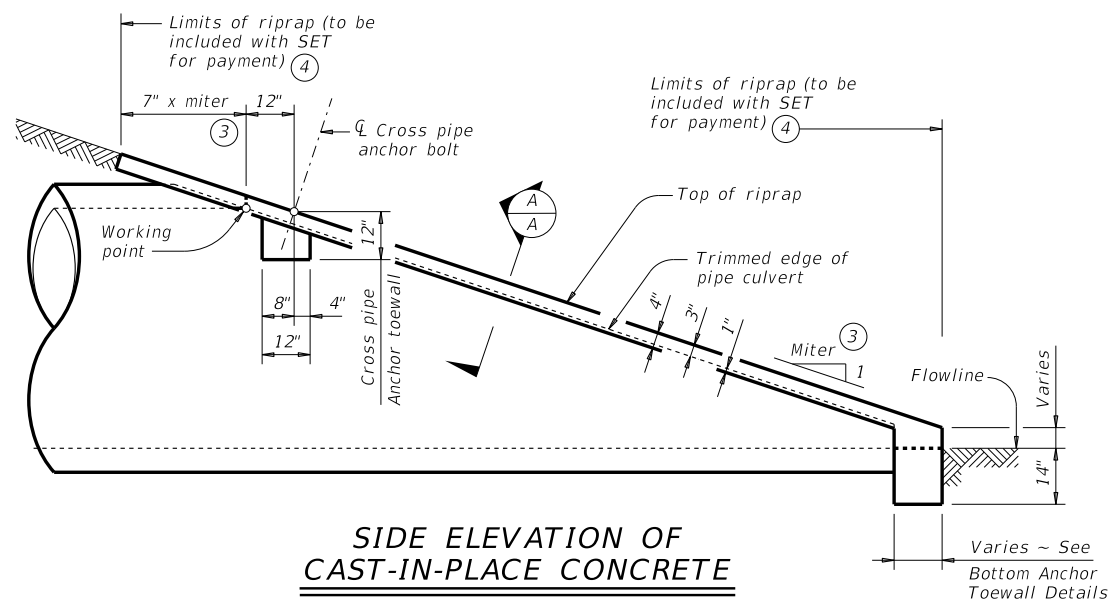
DISCLAIMER: The use of this standard is governed by the "Texas Engineering Practice Act." No warranty of any kind is made by TxDOT for any purpose whatsoever. TxDOT assumes no responsibility for the conversion of this standard to other formats or for incorrect results or damages resulting from its use.



NOTE: All pipe runners, calculations, and dimensions are based on the pipe culverts mitered as shown in this detail. Alternate styles of mitered ends will require that appropriate adjustments be made to the values presented on this standard.

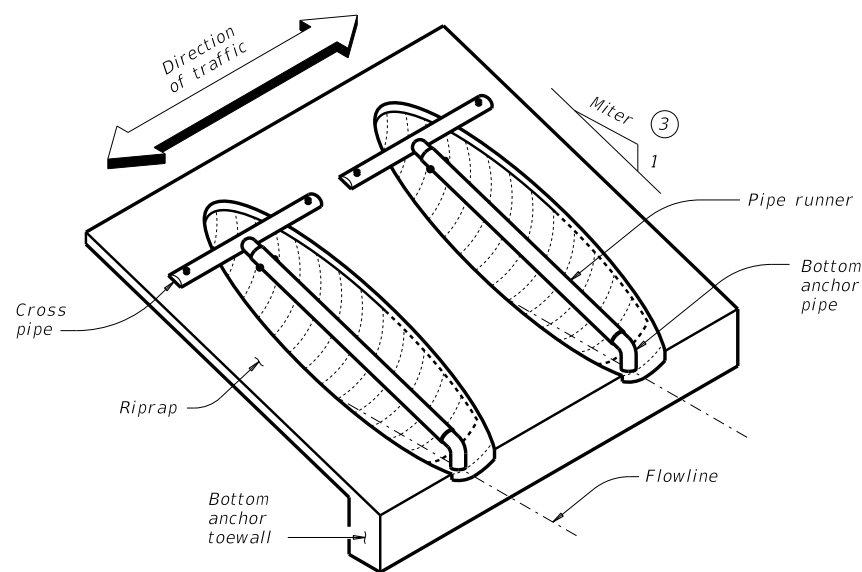
SIDE ELEVATION OF TYPICAL PIPE CULVERT MITER

(Showing corrugated metal pipe (CMP) culvert. Details of reinforced concrete pipe (RCP) culvert are similar.)



SIDE ELEVATION OF CAST-IN-PLACE CONCRETE

(Showing reinforced concrete pipe (RCP) culvert. Details of corrugated metal pipe (CMP) culvert are similar. Pipe runners not shown for clarity)



ISOMETRIC VIEW OF TYPICAL INSTALLATION

(Showing installation with no skew.)

CROSS PIPE LENGTHS AND PIPE RUNNER LENGTHS (1)(2)

Nominal Culvert I.D.	Pipe Culvert Spa ~ G	Cross Pipe Length	Pipe Runner Length											
			3:1 Side Slope				4:1 Side Slope				6:1 Side Slope			
			0° Skew	15° Skew	30° Skew	45° Skew	0° Skew	15° Skew	30° Skew	45° Skew	0° Skew	15° Skew	30° Skew	45° Skew
24"	1' - 7"	3' - 5"	N/A	N/A	N/A	5' - 10"	N/A	N/A	N/A	8' - 1"	N/A	N/A	N/A	12' - 9"
27"	1' - 8"	3' - 8"	N/A	N/A	5' - 5"	6' - 11"	N/A	N/A	7' - 7"	9' - 7"	N/A	N/A	11' - 11"	14' - 11"
30"	1' - 10"	3' - 11"	N/A	N/A	6' - 4"	8' - 0"	N/A	N/A	8' - 9"	11' - 0"	N/A	N/A	13' - 8"	17' - 0"
33"	1' - 11"	4' - 2"	6' - 2"	6' - 5"	7' - 3"	9' - 1"	8' - 6"	8' - 10"	10' - 0"	12' - 5"	13' - 3"	13' - 9"	15' - 5"	19' - 2"
36"	2' - 1"	4' - 5"	6' - 11"	7' - 3"	8' - 2"	10' - 2"	9' - 6"	9' - 11"	11' - 2"	13' - 10"	14' - 9"	15' - 3"	17' - 2"	21' - 3"
42"	2' - 4"	4' - 11"	8' - 6"	8' - 10"	9' - 11"	12' - 4"	11' - 7"	12' - 0"	13' - 6"	16' - 8"	17' - 9"	18' - 5"	20' - 8"	25' - 7"
48"	2' - 7"	5' - 5"	10' - 1"	10' - 5"	11' - 9"	N/A	13' - 7"	14' - 2"	15' - 10"	N/A	20' - 9"	21' - 6"	24' - 2"	N/A
54"	3' - 0"	5' - 11"	11' - 8"	12' - 1"	N/A	N/A	15' - 8"	16' - 3"	N/A	N/A	23' - 10"	24' - 8"	N/A	N/A
60"	3' - 3"	6' - 5"	13' - 3"	N/A	N/A	N/A	17' - 9"	N/A	N/A	N/A	26' - 10"	N/A	N/A	N/A

TYPICAL PIPE CULVERT MITERS (3)

Side Slope	0° Skew	15° Skew	30° Skew	45° Skew
3:1	3:1	3.106:1	3.464:1	4.243:1
4:1	4:1	4.141:1	4.619:1	5.657:1
6:1	6:1	6.212:1	6.928:1	8.485:1

CONDITIONS WHERE PIPE RUNNERS ARE NOT REQUIRED (2)

Nominal Culvert I.D.	Single Pipe Culvert	Multiple Pipe Culverts
12" thru 21"	Skews thru 45°	Skews thru 45°
24"	Skews thru 45°	Skews thru 30°
27"	Skews thru 30°	Skews thru 15°
30"	Skews thru 15°	Skews thru 15°
33"	Skews thru 15°	Always required
36"	Normal (no skew)	Always required
42" thru 60"	Always required	Always required

STANDARD PIPE SIZES AND MAX PIPE RUNNER LENGTHS (1)

Pipe Size	Pipe O.D.	Pipe I.D.	Max Pipe Runner Length
2" STD	2.375"	2.067"	N/A
3" STD	3.500"	3.068"	10' - 0"
4" STD	4.500"	4.026"	19' - 8"
5" STD	5.563"	5.047"	34' - 2"

ESTIMATED CONCRETE RIPRAP QUANTITIES (CY) (5)

Nominal Culvert I.D.	3:1 Side Slope				4:1 Side Slope				6:1 Side Slope			
	0° Skew	15° Skew	30° Skew	45° Skew	0° Skew	15° Skew	30° Skew	45° Skew	0° Skew	15° Skew	30° Skew	45° Skew
12"	0.4	0.4	0.5	0.5	0.5	0.5	0.5	0.6	0.7	0.7	0.7	0.8
15"	0.5	0.5	0.5	0.6	0.6	0.6	0.6	0.7	0.7	0.7	0.8	0.9
18"	0.5	0.5	0.6	0.6	0.6	0.7	0.7	0.8	0.8	0.8	0.9	1.0
21"	0.6	0.6	0.6	0.7	0.7	0.7	0.8	0.9	0.9	0.9	1.0	1.2
24"	0.6	0.7	0.7	0.8	0.8	0.8	0.8	1.0	1.0	1.0	1.1	1.3
27"	0.7	0.7	0.8	0.9	0.8	0.9	0.9	1.1	1.1	1.1	1.2	1.4
30"	0.8	0.8	0.8	0.9	0.9	0.9	1.0	1.2	1.2	1.2	1.3	1.6
33"	0.8	0.8	0.9	1.0	1.0	1.0	1.1	1.3	1.3	1.4	1.5	1.7
36"	0.9	0.9	0.9	1.1	1.1	1.1	1.2	1.4	1.4	1.5	1.6	1.8
42"	1.0	1.0	1.1	1.3	1.2	1.3	1.3	1.6	1.6	1.7	1.8	2.1
48"	1.1	1.1	1.2	N/A	1.4	1.4	1.5	N/A	1.9	1.9	2.1	N/A
54"	1.3	1.3	N/A	N/A	1.6	1.6	N/A	N/A	2.1	2.1	N/A	N/A
60"	1.4	N/A	N/A	N/A	1.7	N/A	N/A	N/A	2.3	N/A	N/A	N/A

(1) Provide pipe runner of the size shown in the tables. Provide cross pipe of the same size as the pipe runner. Provide cross pipe stub out and bottom anchor pipe of the next smaller size pipe as shown in the Standard Pipe Sizes and Max Pipe Runner Lengths table.

(2) This standard allows for the placement of only one pipe runner across each culvert pipe opening. In order to limit the clear opening to be traversed by an errant vehicle, the following conditions must be met:

For 60" culvert pipes, the skew must not exceed 0°.
 For 54" culvert pipes, the skew must not exceed 15°.
 For 48" culvert pipes, the skew must not exceed 30°.
 For all culvert pipe sizes 42" and less, the skew must not exceed 45°.

If the above conditions cannot be met, the designer should consider using a safety end treatment with flared wings. For further information, refer to the TxDOT Roadway Design Manual.

(3) Miter = slope of mitered end of pipe culvert.

(4) Riprap placed beyond the limits shown will be paid for as concrete riprap in accordance with Item 432, "Riprap."

(5) Quantities shown are for one end of one reinforced concrete pipe (RCP) culvert. For multiple pipe culverts or for corrugated metal pipe (CMP) culverts, quantities will need to be adjusted. Riprap quantities are for Contractor's information only.

SHEET 1 OF 2

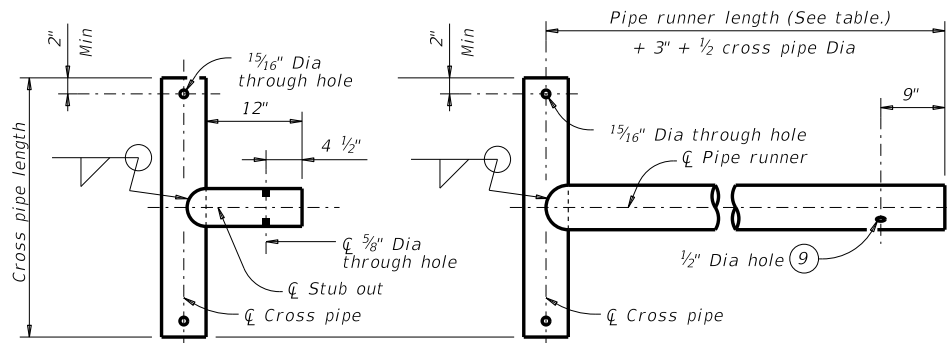


SAFETY END TREATMENT FOR 12" DIA TO 60" DIA PIPE CULVERTS TYPE II ~ CROSS DRAINAGE SETP-CD

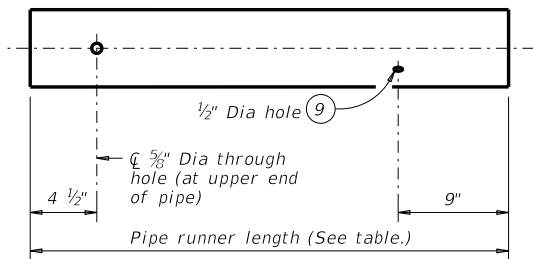
FILE: CD-SETP-CD-20.dgn	DN: GAF	CK: CAT	DW: JRP	CK: GAF
©TxDOT February 2020	CONT	SECT	JOB	HIGHWAY
REVISIONS	DIST	COUNTY	SHEET NO.	

DATE: FILE:

DISCLAIMER: The use of this standard is governed by the "Texas Engineering Practice Act." No warranty of any kind is made by TxDOT for any purpose whatsoever. TxDOT assumes no responsibility for the conversion of this standard to other formats or for incorrect results or damages resulting from its use.

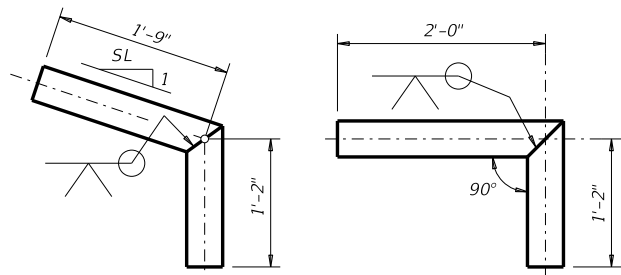


OPTION A1 **OPTION A2**
CROSS PIPE AND CONNECTIONS DETAILS

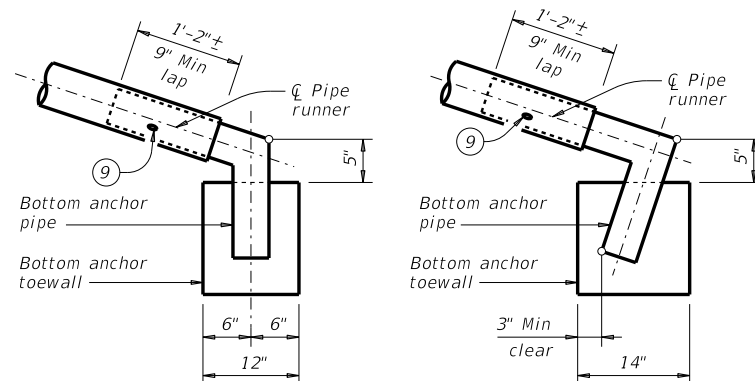


NOTE: The separate pipe runner shown is required when Cross Pipe Connection Option A1 is used.

PIPE RUNNER DETAILS

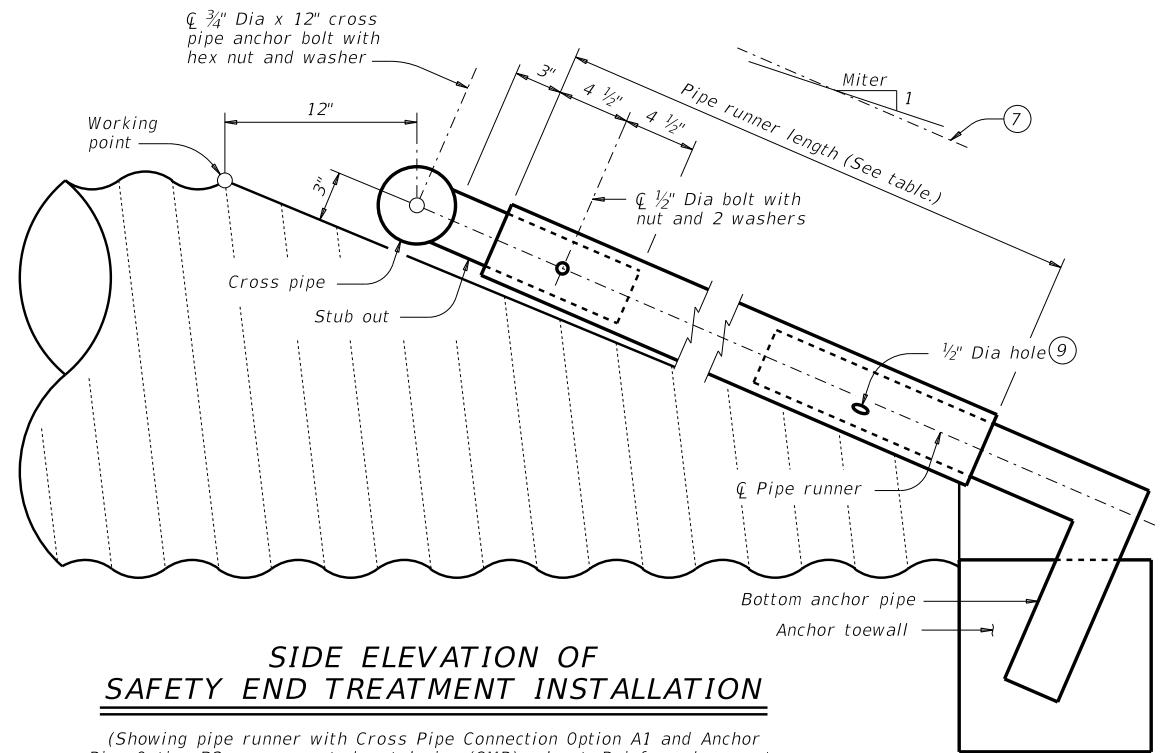


OPTION B1 **OPTION B2**
BOTTOM ANCHOR PIPE DETAILS ⑩



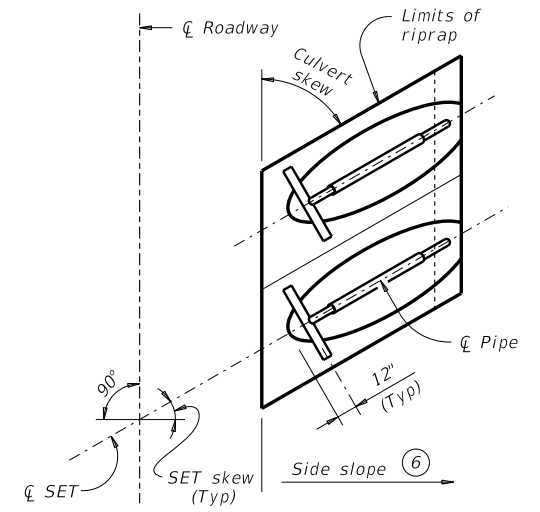
OPTION B1 **OPTION B2**
BOTTOM ANCHOR TOEWALL DETAILS

(Culvert and riprap not shown for clarity.)

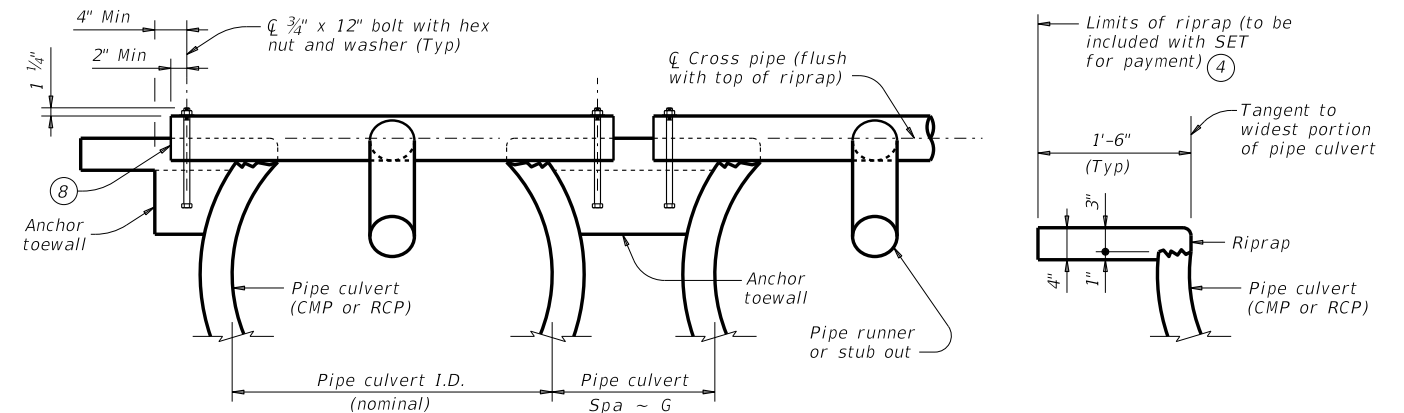


SIDE ELEVATION OF SAFETY END TREATMENT INSTALLATION

(Showing pipe runner with Cross Pipe Connection Option A1 and Anchor Pipe Option B2 on corrugated metal pipe (CMP) culvert. Reinforced concrete pipe culvert (RCP) details are similar. Riprap not shown for clarity.)



PLAN OF SKEWED INSTALLATION



SHOWING CROSS PIPE AND ANCHOR TOEWALL

SHOWING TYPICAL PIPE CULVERT AND RIPRAP

SECTION A-A

- ④ Riprap placed beyond the limits shown will be paid for as concrete riprap in accordance with Item 432, "Riprap."
- ⑥ Recommended values of side slope are 3:1, 4:1, and 6:1. All quantities, calculations, and dimensions shown herein are based on these recommended values. Slope of 3:1 or flatter is required for vehicle safety.
- ⑦ Note that actual slope of pipe runner may vary slightly from side slope of riprap and trimmed culvert pipe edge.
- ⑧ Ensure that riprap concrete does not flow into the cross pipe so as to permit disassembly of the bolted connection to allow cleanout access.
- ⑨ After installation, inspect the 1/2 inch hole to ensure that the lap of the pipe runner with the bottom anchor pipe is adequate.
- ⑩ At fabricator's option, a heat bend to a smooth 5" radius or a manufactured elbow (of the same material as the runner) may be substituted for the mitered and welded joint in the bottom anchor pipe.

MATERIAL NOTES:

Synthetic fibers listed on the "Fibers for Concrete" Material Producer List (MPL) may be used in lieu of steel reinforcing in riprap concrete unless noted otherwise.
Provide pipe runners, cross pipes, and anchor pipes conforming to the requirements of ASTM A53 (Type E or S, Gr B), ASTM A500 Gr B, or API 5LX52.
Provide ASTM A307 bolts and nuts.
Galvanize all steel components, except concrete reinforcing, after fabrication.
Repair galvanizing damaged during transport or construction in accordance with the specifications.

GENERAL NOTES:

Pipe runners are designed for a traversing load of 1,800 pounds at yield as recommended by Research Report 280-1, "Safety Treatment of Roadside Cross-Drainage Structures", Texas Transportation Institute, March 1981.
Safety end treatments (SET) shown herein are intended for use in those installations where out of control vehicles are likely to traverse the openings approximately perpendicular to the pipe runners.
Payment for riprap and toewall is included in the price bid for each safety end treatment.
Construct concrete riprap and all necessary inverts in accordance with the requirements of Item 432, "Riprap."

		Bridge Division Standard	
SAFETY END TREATMENT FOR 12" DIA TO 60" DIA PIPE CULVERTS TYPE II ~ CROSS DRAINAGE SETP-CD			
FILE: CD-SETP-CD-20.dgn	DN: GAF	CK: CAT	DW: JRP
©TxDOT February 2020	CONT SECT	JOB	HIGHWAY
REVISIONS			
	DIST	COUNTY	SHEET NO.

DATE: FILE: