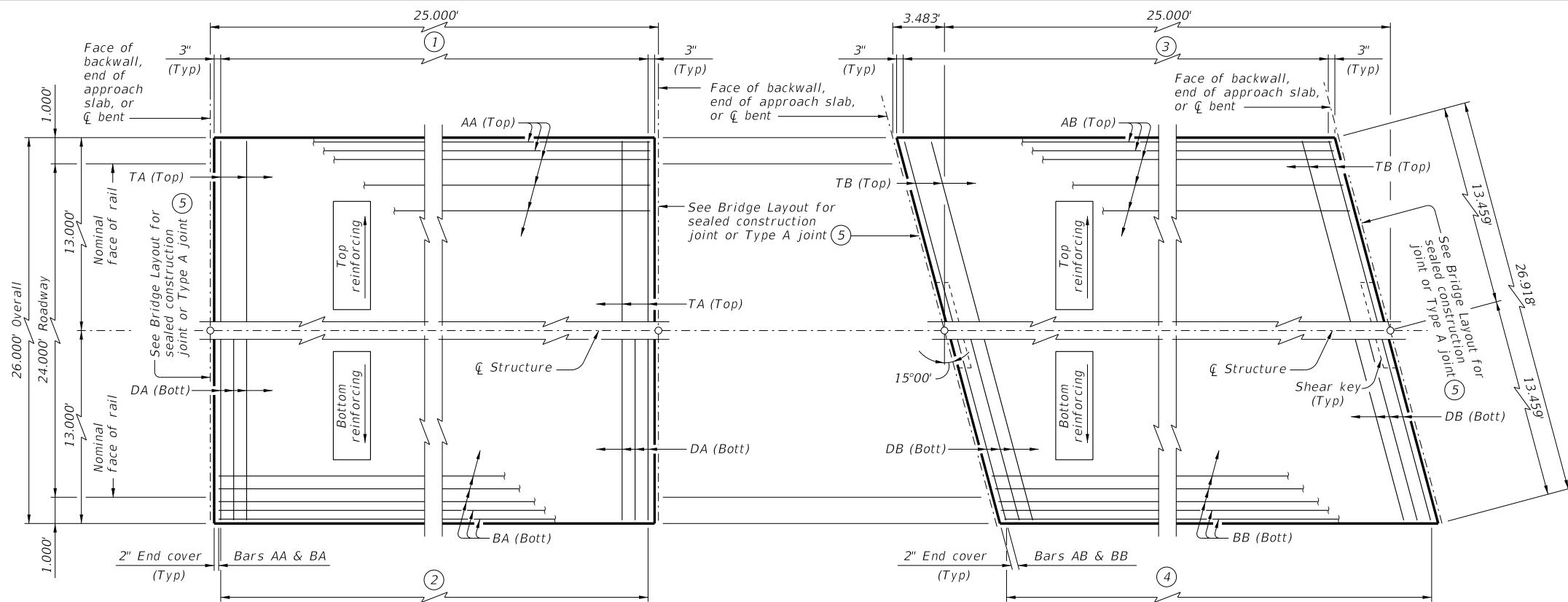


DISCLAIMER: This standard is governed by the "Texas Engineering Practice Act." No warranty of any kind is made by TxDOT for any purpose whatsoever. TxDOT assumes no responsibility for the conversion of this standard to other formats or for incorrect results or damages resulting from its use.

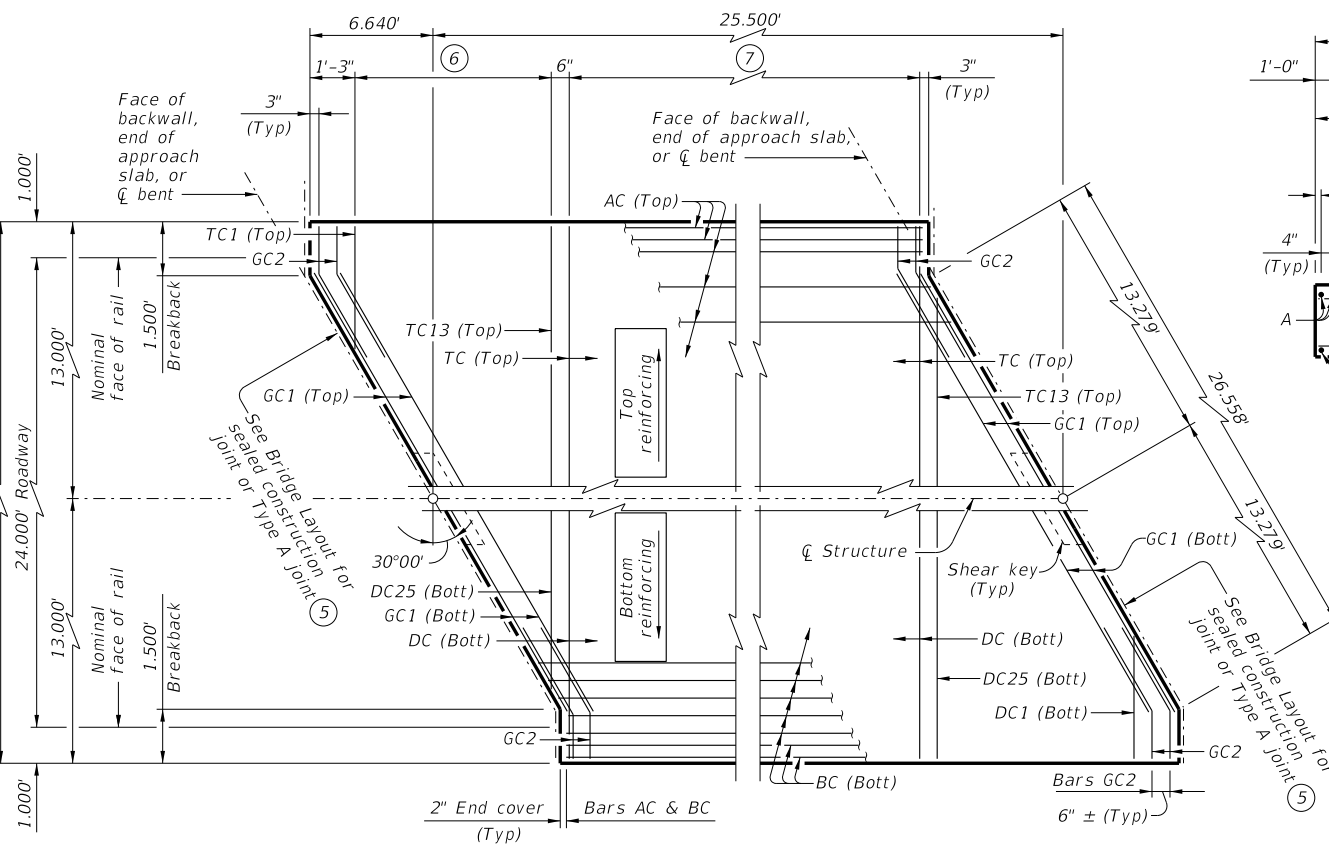


- ① Bars TA (Top) at 12" Max spacing
- ② Bars DA (Bott) at 6" Max spacing

**PLAN ~ CS-25-24**

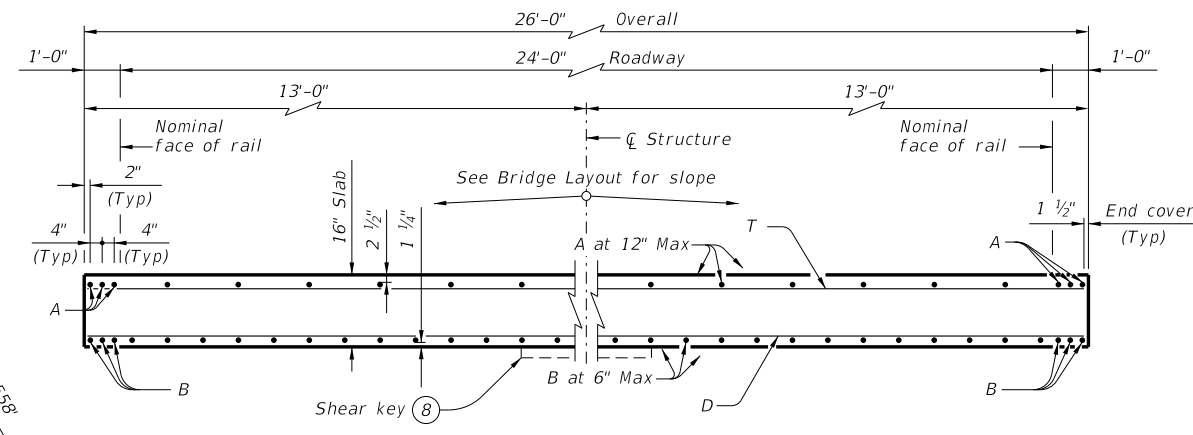
- ③ Bars TB (Top) at 12" Max spacing
- ④ Bars DB (Bott) at 6" Max spacing

**PLAN ~ CS-25-24(15°)**



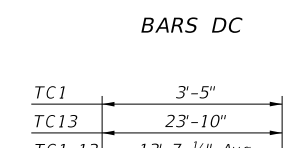
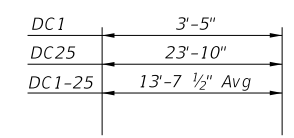
- ⑥ Bars TC1-13 (Top) at 12" Max spacing = 11'-9 1/2"
- Bars DC1-25 (Bott) at 6" Max spacing = 11'-9 1/2"
- ⑦ Bars TC (Top) at 12" Max spacing
- Bars DC (Bott) at 6" Max spacing

**PLAN ~ CS-25-24(30°)**



**TYPICAL TRANSVERSE SECTION**

⑧ At skewed abutments and bents only.



**TABLE OF ESTIMATED QUANTITIES ⑤**  
CS-25-24

Bar	No.	Size	Length	Weight
AA	30	#4	24' - 8"	494
BA	54	#9	24' - 8"	4,529
DA	50	#4	25' - 9"	860
TA	26	#4	25' - 9"	447
Reinforcing Steel				Lb 6,330
Class "S" Concrete				CY 32.1

**TABLE OF ESTIMATED QUANTITIES ⑤**  
CS-25-24 (15°)

Bar	No.	Size	Length	Weight
AB	30	#4	24' - 8"	494
BB	54	#9	24' - 8"	4,529
DB	50	#4	26' - 8"	891
TB	26	#4	26' - 8"	463
Reinforcing Steel				Lb 6,377
Class "S" Concrete				CY 32.2

⑤ See standard CS-MD for fixed or expansion joint details.

**TABLE OF LOAD RATING FACTORS**

Skew	INV	OPR
0	1.22	1.58
15	1.24	1.60
30	1.30	1.69

**TABLE OF ESTIMATED QUANTITIES ⑤**  
CS-25-24 (30°)

Bar	No.	Size	Length	Weight
AC	30	#4	25' - 2"	504
BC	54	#9	25' - 2"	4,621
DC	25	#4	25' - 9"	430
DC1-25	50	#4	13' - 8" Av	456
GC1	8	#5	26' - 7"	222
GC2	16	#5	4' - 0"	67
TC	13	#4	25' - 9"	224
TC1-13	26	#4	13' - 8" Av	237
Reinforcing Steel				Lb 6,761
Class "S" Concrete				CY 32.8

**MATERIAL NOTES:**  
Provide Class S concrete (f'c = 4,000 psi).  
Provide Class S (HPC) concrete if shown elsewhere in the plans.  
Provide Grade 60 reinforcing steel.

**GENERAL NOTES:**  
Designed according to AASHTO LRFD Bridge Design Specifications.  
Load rated using Load and Resistance Factor Rating according to AASHTO Manual for Bridge Evaluation.  
Details shown are for right forward skew. See Bridge Layout for actual skew direction.  
See Miscellaneous Details for C-I-P Concrete Slab Spans (CS-MD) standard sheet for additional slab span details and quantity adjustments.  
Bar laps not permitted for Bars A and B.  
See applicable rail details for rail anchorage in slab.  
This standard does not support the use of transition bents.

Cover dimensions are clear dimensions, unless noted otherwise. Reinforcing bar dimensions shown are out-to-out of bar.

HL93 LOADING

**Texas Department of Transportation** Bridge Division Standard

**25' C-I-P CONCRETE SLAB SPANS**  
24' ROADWAY 0°-30° SKEW

**CS-25-24**

FILE: CS-CS2524-21.dgn	DN: LMO	CK: BMP	DW: LJC	CK: TAR
©TxDOT July 2021	CONT	SECT	JOB	HIGHWAY
REVISIONS				
	DIST	COUNTY		SHEET NO.

DATE: FILE: