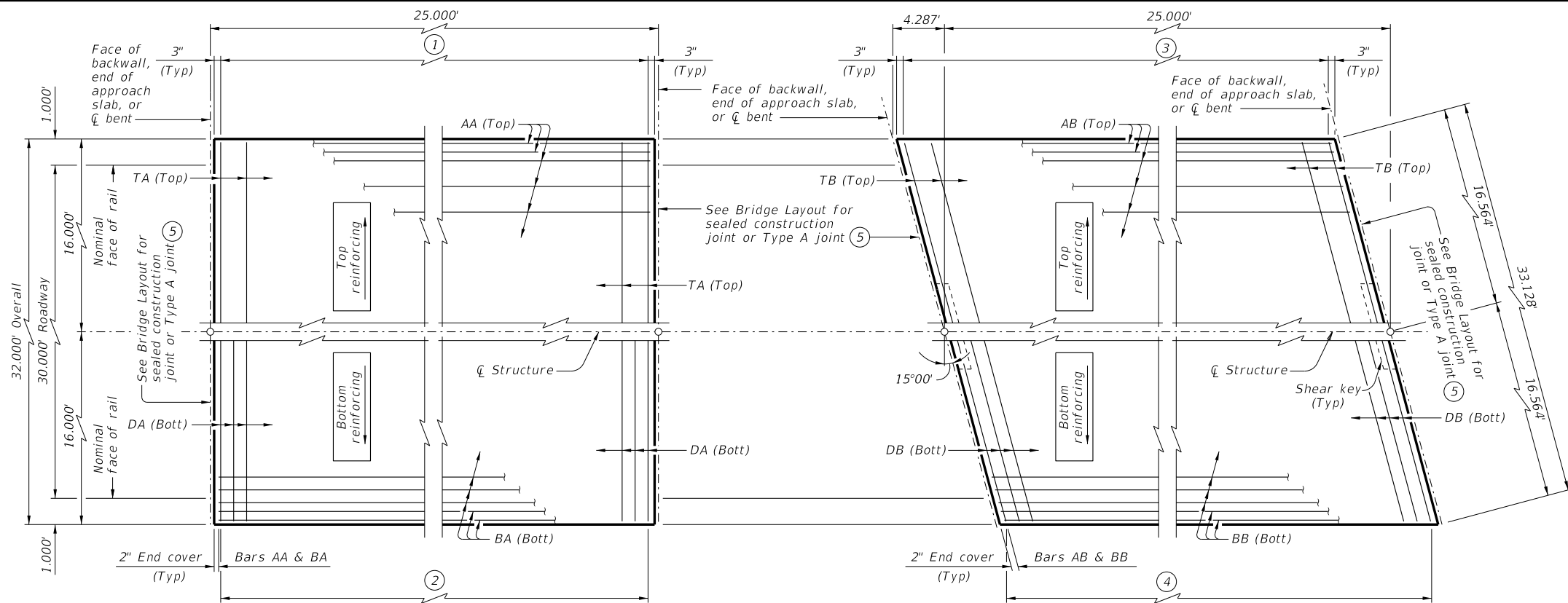


DISCLAIMER: This standard is governed by the "Texas Engineering Practice Act." No warranty of any kind is made by TxDOT for any purpose whatsoever. TxDOT assumes no responsibility for the conversion of other formats or for incorrect results or damages resulting from its use.

DATE: FILE:

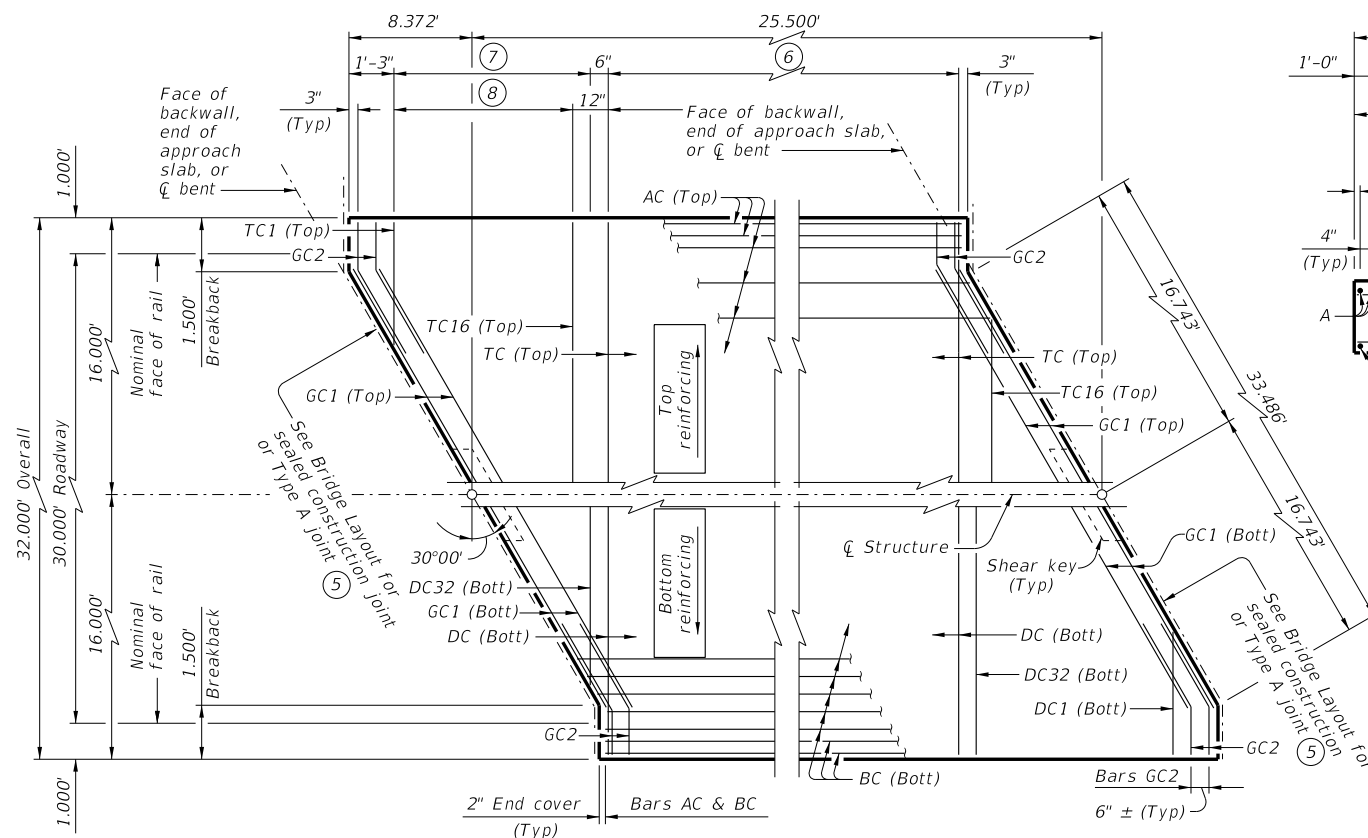


PLAN ~ CS-25-30

PLAN ~ CS-25-30(15°)

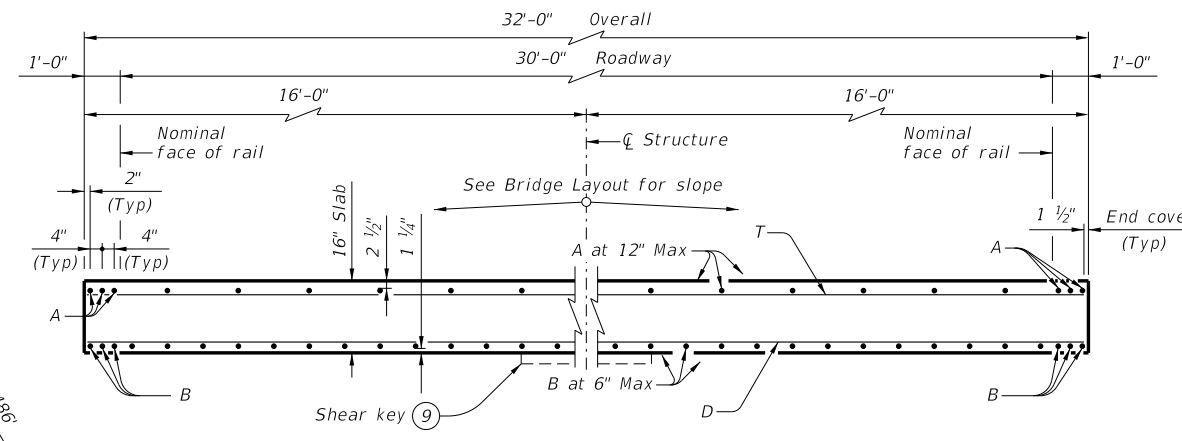
- ① Bars TA (Top) at 12" Max spacing
- ② Bars DA (Bott) at 6" Max spacing

- ③ Bars TB (Top) at 12" Max spacing
- ④ Bars DB (Bott) at 6" Max spacing



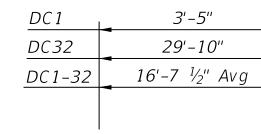
PLAN ~ CS-25-30(30°)

- ⑥ Bars TC (Top) at 12" Max spacing  
Bars DC (Bott) at 6" Max spacing
- ⑦ Bars DC1-32 (Bott) at 6" Max spacing = 15'-3"
- ⑧ Bars TC1-16 (Top) at 12" Max spacing = 14'-9"

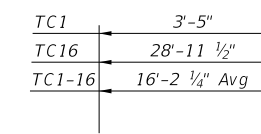


TYPICAL TRANSVERSE SECTION

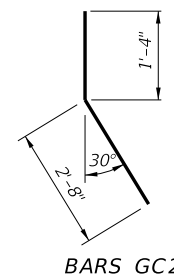
⑨ At skewed abutments and bents only.



BARS DC



BARS TC



BARS GC2

**TABLE OF ESTIMATED QUANTITIES ⑤**  
CS-25-30

Bar	No.	Size	Length	Weight
AA	36	#4	24' - 8"	593
BA	66	#9	24' - 8"	5,535
DA	50	#4	31' - 9"	1,060
TA	26	#4	31' - 9"	551
Reinforcing Steel				Lb 7,739
Class "S" Concrete				CY 39.5

**TABLE OF ESTIMATED QUANTITIES ⑤**  
CS-25-30 (15°)

Bar	No.	Size	Length	Weight
AB	36	#4	24' - 8"	593
BB	66	#9	24' - 8"	5,535
DB	50	#4	32' - 11"	1,099
TB	26	#4	32' - 11"	572
Reinforcing Steel				Lb 7,799
Class "S" Concrete				CY 39.6

⑤ See standard CS-MD for fixed or expansion joint details.

**TABLE OF LOAD RATING FACTORS**

Skew	INV	OPR
0	1.25	1.61
15	1.27	1.64
30	1.33	1.73

**TABLE OF ESTIMATED QUANTITIES ⑤**  
CS-25-30 (30°)

Bar	No.	Size	Length	Weight
AC	36	#4	25' - 2"	605
BC	66	#9	25' - 2"	5,647
DC	19	#4	31' - 9"	403
DC1-32	64	#4	16' - 8" Av	713
GC1	8	#5	33' - 6"	280
GC2	16	#5	4' - 0"	67
TC	10	#4	31' - 9"	212
TC1-16	32	#4	16' - 2" Av	346
Reinforcing Steel				Lb 8,273
Class "S" Concrete				CY 40.4

**MATERIAL NOTES:**  
Provide Class S concrete (f'c = 4,000 psi).  
Provide Class S (HPC) concrete if shown elsewhere in the plans.  
Provide Grade 60 reinforcing steel.

**GENERAL NOTES:**  
Designed according to AASHTO LRFD Bridge Design Specifications.  
Load rated using Load and Resistance Factor Rating according to AASHTO Manual for Bridge Evaluation.  
Details shown are for right forward skew. See Bridge Layout for actual skew direction.  
See Miscellaneous Details for C-I-P Concrete Slab Spans (CS-MD) standard sheet for additional slab span details and quantity adjustments.  
Bar laps not permitted for Bars A and B.  
See applicable rail details for rail anchorage in slab.  
This standard does not support the use of transition bents.

Cover dimensions are clear dimensions, unless noted otherwise. Reinforcing bar dimensions shown are out-to-out of bar.

HL93 LOADING



**25' C-I-P CONCRETE SLAB SPANS**  
30' ROADWAY 0°-30° SKEW

CS-25-30

FILE: CS-CS2530-21.dgn	DN: LMO	CK: BMP	DW: LJC	CK: TAR
©TxDOT July 2021	CONT	SECT	JOB	HIGHWAY
REVISIONS				
	DIST	COUNTY		SHEET NO.