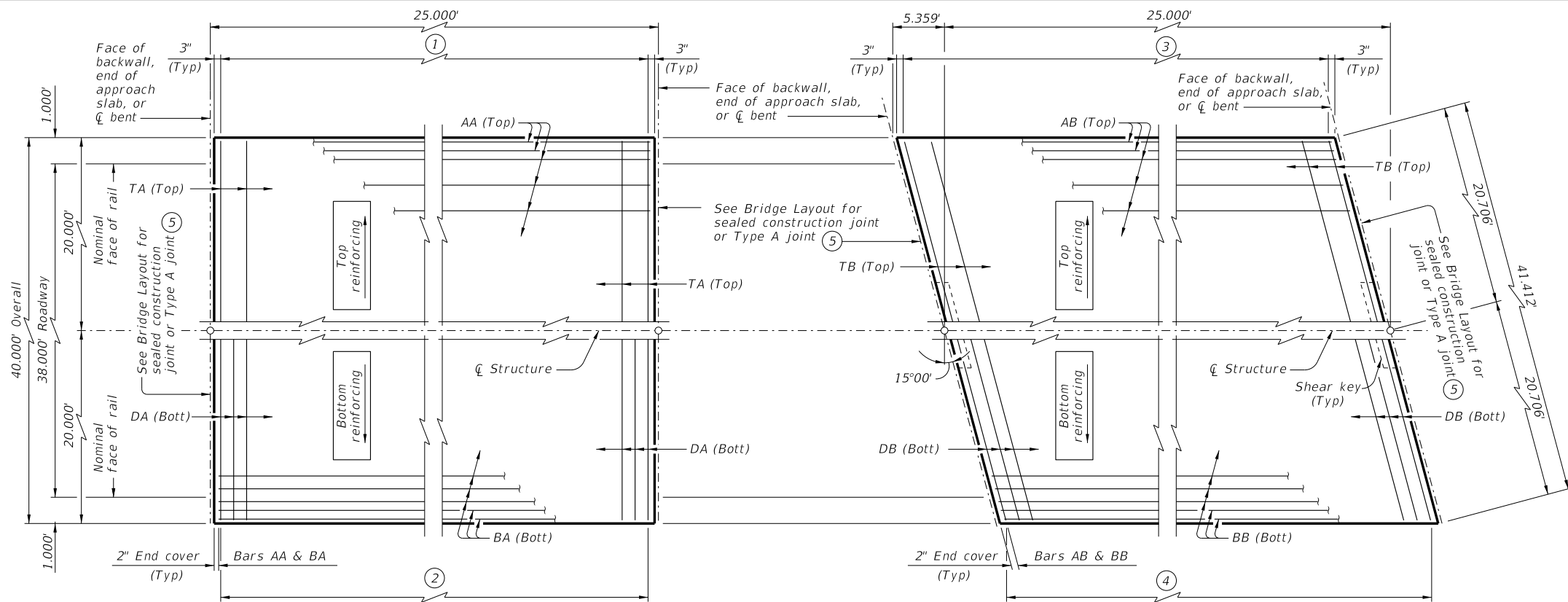


DISCLAIMER: This standard is governed by the "Texas Engineering Practice Act." No warranty of any kind is made by TxDOT for any purpose whatsoever. TxDOT assumes no responsibility for the conversion of this standard to other formats or for incorrect results or damages resulting from its use.

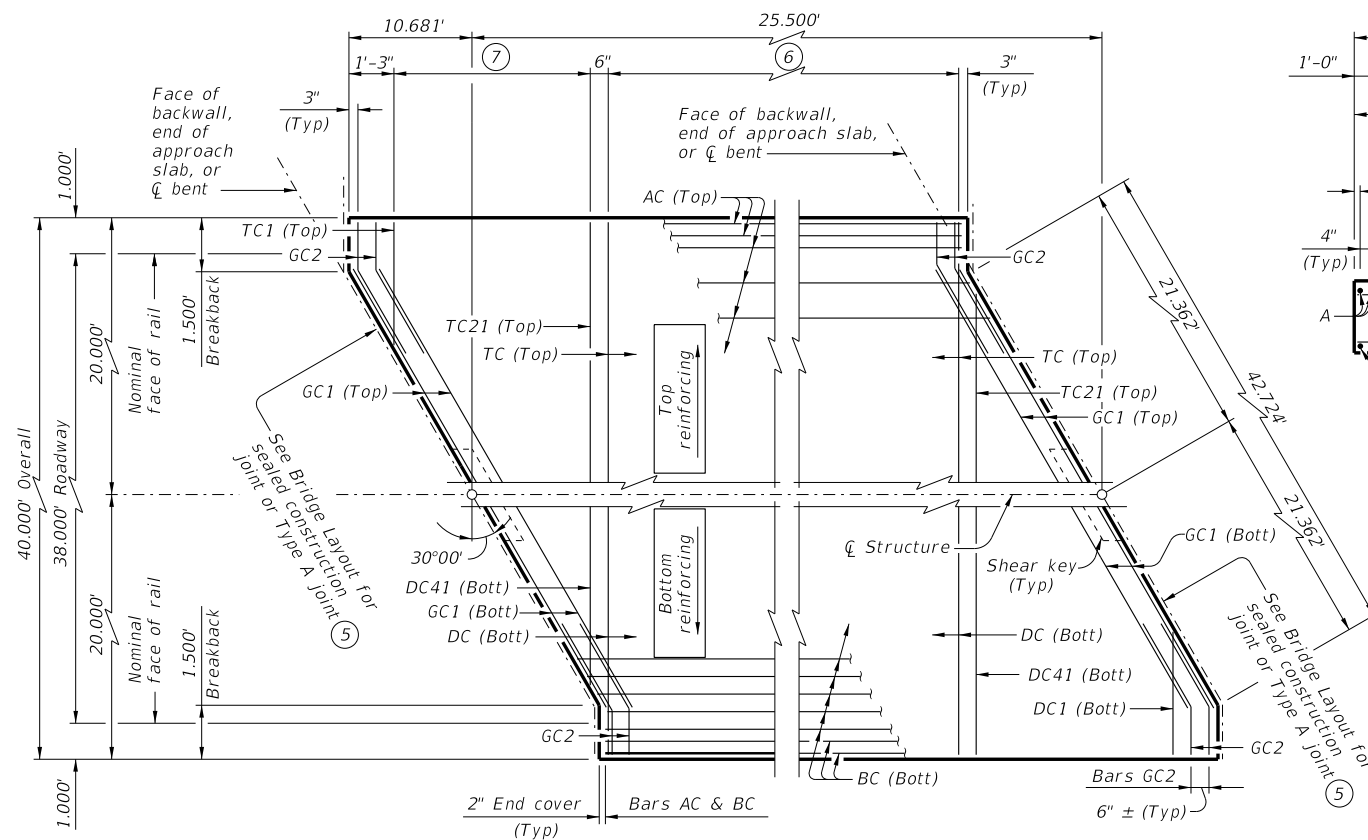


PLAN ~ CS-25-38

PLAN ~ CS-25-38(15°)

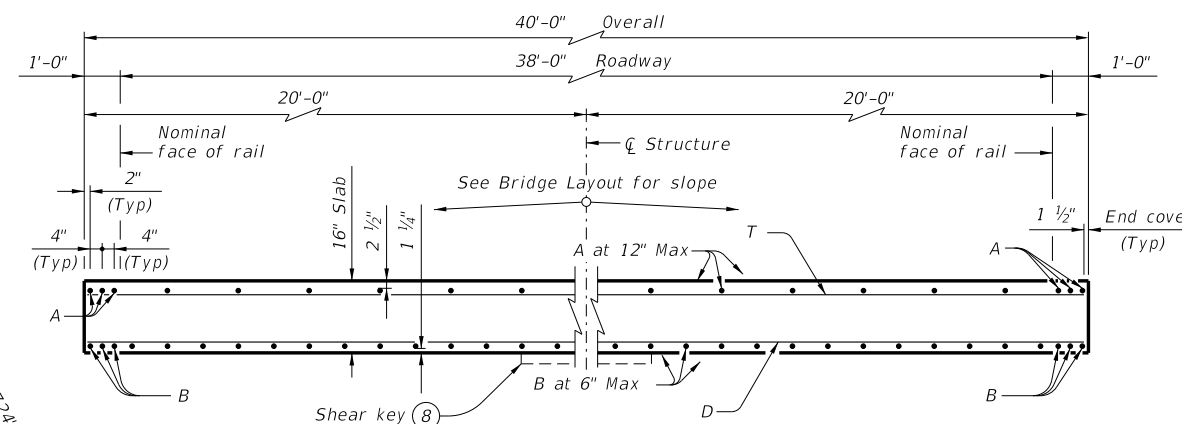
- ① Bars TA (Top) at 12" Max spacing
- ② Bars DA (Bott) at 6" Max spacing

- ③ Bars TB (Top) at 12" Max spacing
- ④ Bars DB (Bott) at 6" Max spacing



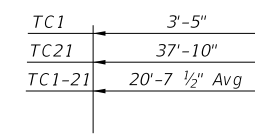
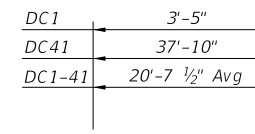
PLAN ~ CS-25-38(30°)

- ⑥ Bars TC (Top) at 12" Max spacing
Bars DC (Bott) at 6" Max spacing
- ⑦ Bars TC1-21 (Top) at 12" Max spacing = 19'-10 1/2"
Bars DC1-41 (Bott) at 6" Max spacing = 19'-10 1/2"



TYPICAL TRANSVERSE SECTION

⑧ At skewed abutments and bents only.



BARS GC2

BARS TC

TABLE OF ESTIMATED QUANTITIES ⑤
CS-25-38

| Bar | No. | Size | Length | Weight |
|--------------------|-----|------|----------|----------|
| AA | 44 | #4 | 24' - 8" | 725 |
| BA | 82 | #9 | 24' - 8" | 6,877 |
| DA | 50 | #4 | 39' - 9" | 1,328 |
| TA | 26 | #4 | 39' - 9" | 690 |
| Reinforcing Steel | | | | Lb 9,620 |
| Class "S" Concrete | | | | CY 49.4 |

TABLE OF ESTIMATED QUANTITIES ⑤
CS-25-38 (15°)

| Bar | No. | Size | Length | Weight |
|--------------------|-----|------|----------|----------|
| AB | 44 | #4 | 24' - 8" | 725 |
| BB | 82 | #9 | 24' - 8" | 6,877 |
| DB | 50 | #4 | 41' - 2" | 1,375 |
| TB | 26 | #4 | 41' - 2" | 715 |
| Reinforcing Steel | | | | Lb 9,692 |
| Class "S" Concrete | | | | CY 49.5 |

⑤ See standard CS-MD for fixed or expansion joint details.

TABLE OF LOAD RATING FACTORS

| Skew | INV | OPR |
|------|------|------|
| 0 | 1.27 | 1.65 |
| 15 | 1.29 | 1.67 |
| 30 | 1.36 | 1.76 |

TABLE OF ESTIMATED QUANTITIES ⑤
CS-25-38 (30°)

| Bar | No. | Size | Length | Weight |
|--------------------|-----|------|-------------|-----------|
| AC | 44 | #4 | 25' - 2" | 740 |
| BC | 82 | #9 | 25' - 2" | 7,016 |
| DC | 9 | #4 | 39' - 9" | 239 |
| DC1-41 | 82 | #4 | 20' - 8" Av | 1,132 |
| GC1 | 8 | #5 | 42' - 9" | 357 |
| GC2 | 16 | #5 | 4' - 0" | 67 |
| TC | 5 | #4 | 39' - 9" | 133 |
| TC1-21 | 42 | #4 | 20' - 8" Av | 580 |
| Reinforcing Steel | | | | Lb 10,264 |
| Class "S" Concrete | | | | CY 50.5 |

MATERIAL NOTES:
Provide Class S concrete (f'c = 4,000 psi).
Provide Class S (HPC) concrete if shown elsewhere in the plans.
Provide Grade 60 reinforcing steel.

GENERAL NOTES:
Designed according to AASHTO LRFD Bridge Design Specifications.
Load rated using Load and Resistance Factor Rating according to AASHTO Manual for Bridge Evaluation.
Details shown are for right forward skew. See Bridge Layout for actual skew direction.
See Miscellaneous Details for C-I-P Concrete Slab Spans (CS-MD) standard sheet for additional slab span details and quantity adjustments.
Bar laps not permitted for Bars A and B.
See applicable rail details for rail anchorage in slab.
This standard does not support the use of transition bents.

Cover dimensions are clear dimensions, unless noted otherwise.
Reinforcing bar dimensions shown are out-to-out of bar.

HL93 LOADING

Texas Department of Transportation Bridge Division Standard

25' C-I-P CONCRETE SLAB SPANS
38' ROADWAY 0°-30° SKEW

CS-25-38

| | | | | |
|------------------------|---------|---------|-----------|---------|
| FILE: CS-CS2538-21.dgn | DN: LMO | CK: BMP | DW: LJC | CK: TAR |
| ©TxDOT July 2021 | CONT | SECT | JOB | HIGHWAY |
| REVISIONS | DIST | COUNTY | SHEET NO. | |

DATE: FILE: