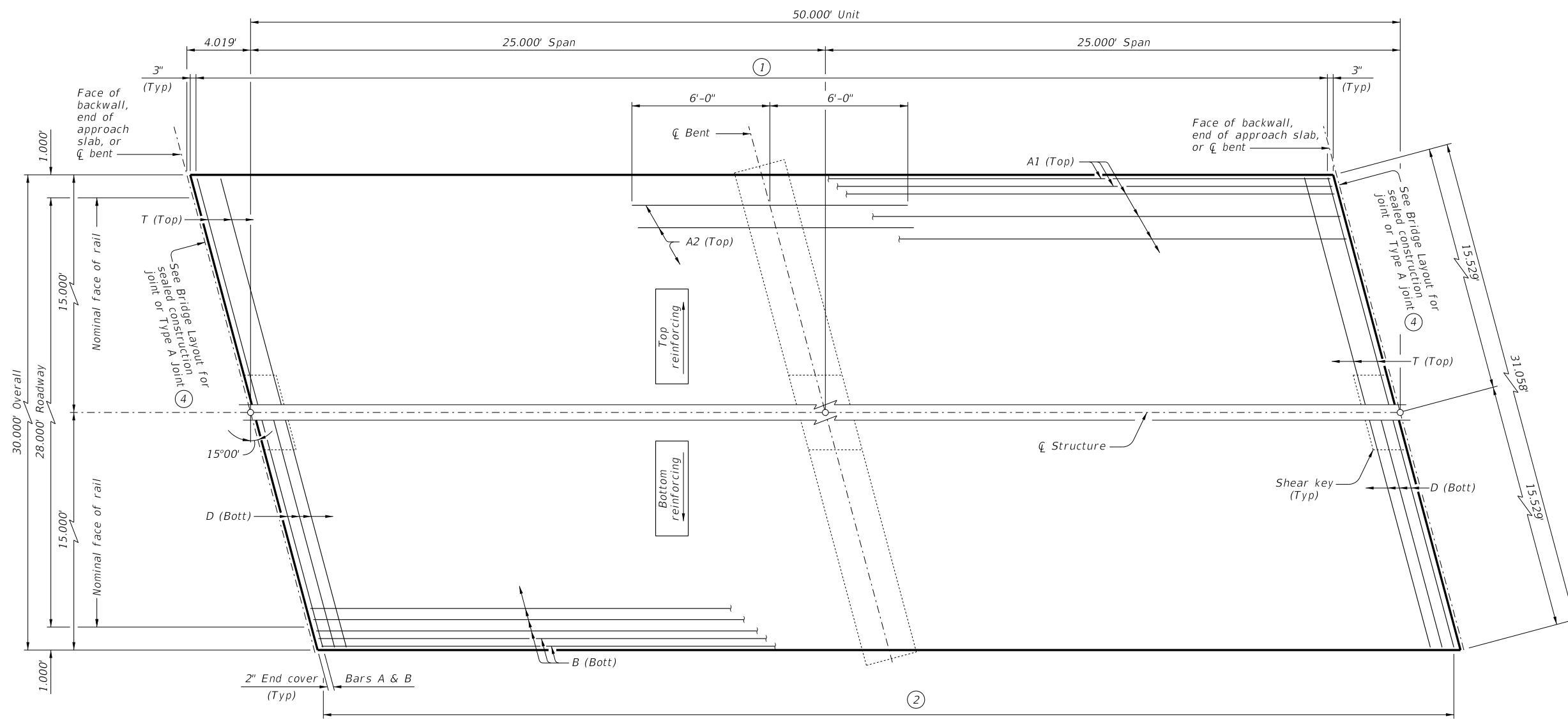
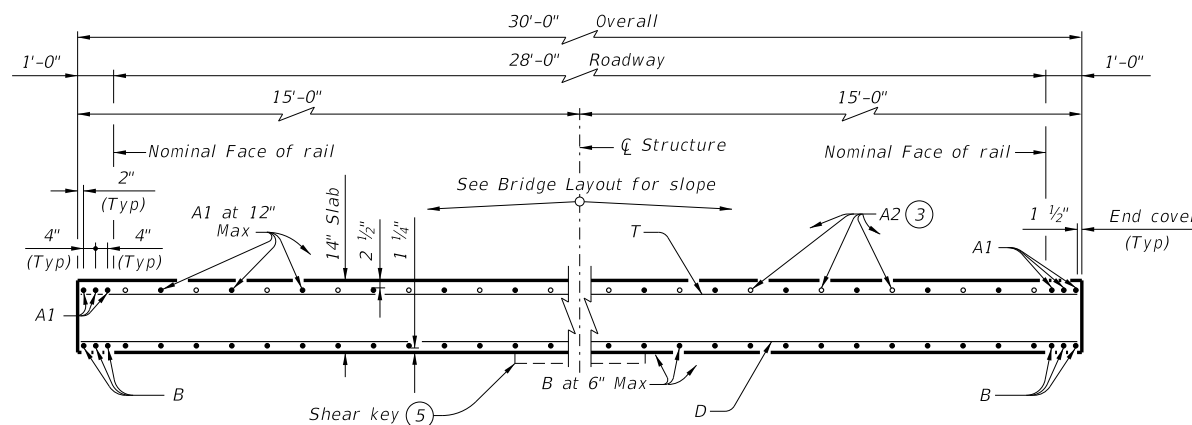


DISCLAIMER: This standard is governed by the "Texas Engineering Practice Act." No warranty of any kind is made by TxDOT for any purpose whatsoever. TxDOT assumes no responsibility for the conversion of this standard to other formats or for incorrect results or damages resulting from its use.

DATE:
FILE:



PLAN



TYPICAL TRANSVERSE SECTION

⑤ At abutments and bents only.

TABLE OF ESTIMATED QUANTITIES
CS-50-28 (15°)

Bar	No.	Size	Length	Weight
A1	34	#8	49' - 8"	4,509
A2	29	#8	12' - 0"	929
B	62	#8	49' - 8"	8,222
D	100	#4	30' - 10"	2,060
T	51	#4	30' - 10"	1,050

Reinforcing Steel		Lb	16,770
Class "S" Concrete		CY	65.0

- ① Bars T (Top) at 12" Max spacing
- ② Bars D (Bott) at 6" Max spacing
- ③ Place Bars A2 between Bars A1 over bent. (See PLAN for placement.)
- ④ See standard CS-MD for fixed or expansion joint details.

TABLE OF LOAD RATING FACTORS

INV	OPR
1.14	1.47

MATERIAL NOTES:
Provide Class S concrete ($f'_c = 4,000$ psi).
Provide Class S (HPC) concrete if shown elsewhere in the plans.
Provide Grade 60 reinforcing steel.

GENERAL NOTES:
Designed according to AASHTO LRFD Bridge Design Specifications.
Load rated using Load and Resistance Factor Rating according to AASHTO Manual for Bridge Evaluation.
Details shown are for right forward skew. See Bridge Layout for actual skew direction.
See Miscellaneous Details for C-I-P Concrete Slab Spans (CS-MD) standard sheet for additional slab span details.
Bar laps not permitted for Bars A and B.
See applicable rail details for rail anchorage in slab.
This standard does not support the use of transition bents.

Cover dimensions are clear dimensions, unless noted otherwise.
Reinforcing bar dimensions shown are out-to-out of bar.

HL93 LOADING

		Bridge Division Standard	
50' C-I-P CONTINUOUS SLAB UNIT (25'-25') 28' ROADWAY 15° SKEW CS-50-28-15			
FILE: CS-CS502815-21.dgn	DN: LMO	CK: BMP	DW: LJC
©TxDOT	CONT	SECT	JOB
REVISIONS	HIGHWAY		
DIST	COUNTY	SHEET NO.	