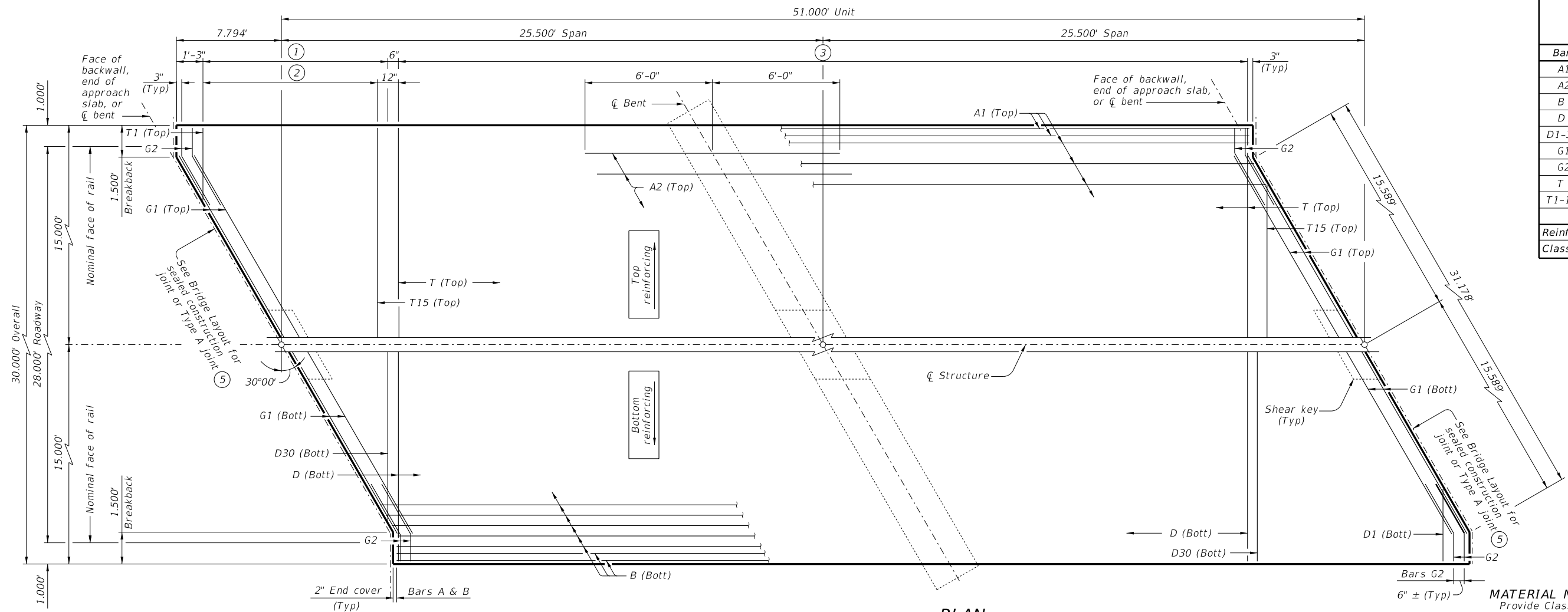


DISCLAIMER: This standard is governed by the "Texas Engineering Practice Act." No warranty of any kind is made by TxDOT for any purpose whatsoever. TxDOT assumes no responsibility for the conversion of this standard to other formats or for incorrect results or damages resulting from its use.

DATE: FILE:



**PLAN**

**TABLE OF ESTIMATED QUANTITIES**  
CS-50-28 (30°)

| Bar                | No. | Size | Length      | Weight |
|--------------------|-----|------|-------------|--------|
| A1                 | 34  | #8   | 50' - 8"    | 4,600  |
| A2                 | 29  | #8   | 12' - 0"    | 929    |
| B                  | 62  | #8   | 50' - 8"    | 8,387  |
| D                  | 71  | #4   | 29' - 9"    | 1,411  |
| D1-30              | 60  | #4   | 15' - 8" Av | 628    |
| G1                 | 8   | #5   | 31' - 2"    | 260    |
| G2                 | 16  | #5   | 4' - 0"     | 67     |
| T                  | 36  | #4   | 29' - 9"    | 715    |
| T1-15              | 30  | #4   | 15' - 2" Av | 304    |
| Reinforcing Steel  |     |      | Lb          | 17,301 |
| Class "S" Concrete |     |      | CY          | 66.3   |

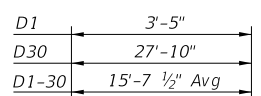
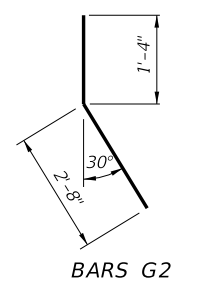
**TABLE OF LOAD RATING FACTORS**

| INV  | OPR  |
|------|------|
| 1.20 | 1.55 |

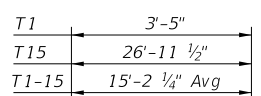
**MATERIAL NOTES:**  
Provide Class S concrete ( $f'_c = 4,000$  psi).  
Provide Class S (HPC) concrete if shown elsewhere in the plans.  
Provide Grade 60 reinforcing steel.

**GENERAL NOTES:**  
Designed according to AASHTO LRFD Bridge Design Specifications.  
Load rated using Load and Resistance Factor Rating according to AASHTO Manual for Bridge Evaluation.  
Details shown are for right forward skew. See Bridge Layout for actual skew direction.  
See Miscellaneous Details for C-I-P Concrete Slab Spans (CS-MD) standard sheet for additional slab span details.  
Bar laps not permitted for Bars A and B.  
See applicable rail details for rail anchorage in slab.  
This standard does not support the use of transition bents.

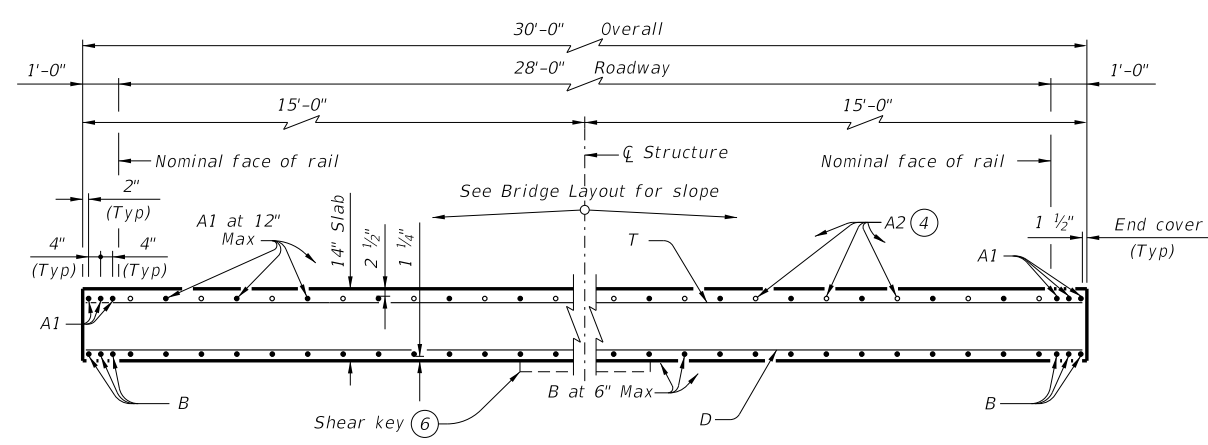
Cover dimensions are clear dimensions, unless noted otherwise.  
Reinforcing bar dimensions shown are out-to-out of bar.



**BARS D**



**BARS T**



**TYPICAL TRANSVERSE SECTION**

(6) At abutments and bents only.

- (1) Bars D1-30 (Bott) at 6" Max spacing = 14'-1 1/4"
- (2) Bars T1-15 (Top) at 12" Max spacing = 13'-7 1/4"
- (3) Bars D (Bott) at 6" Max spacing  
Bars T (Top) at 12" Max spacing
- (4) Place Bars A2 between Bars A1 over bent. (See PLAN for placement.)
- (5) See standard CS-MD for fixed or expansion joint details.

HL93 LOADING



**51' C-I-P CONTINUOUS SLAB UNIT**  
(25.5'-25.5')  
**28' ROADWAY 30° SKEW**  
**CS-50-28-30**

|                          |         |         |           |         |
|--------------------------|---------|---------|-----------|---------|
| FILE: CS-CS502830-21.dgn | DN: LMO | CK: BMP | DW: LJC   | CK: TAR |
| ©TxDOT July 2021         | CONT    | SECT    | JOB       | HIGHWAY |
| REVISIONS                |         |         |           |         |
| DIST                     | COUNTY  |         | SHEET NO. |         |