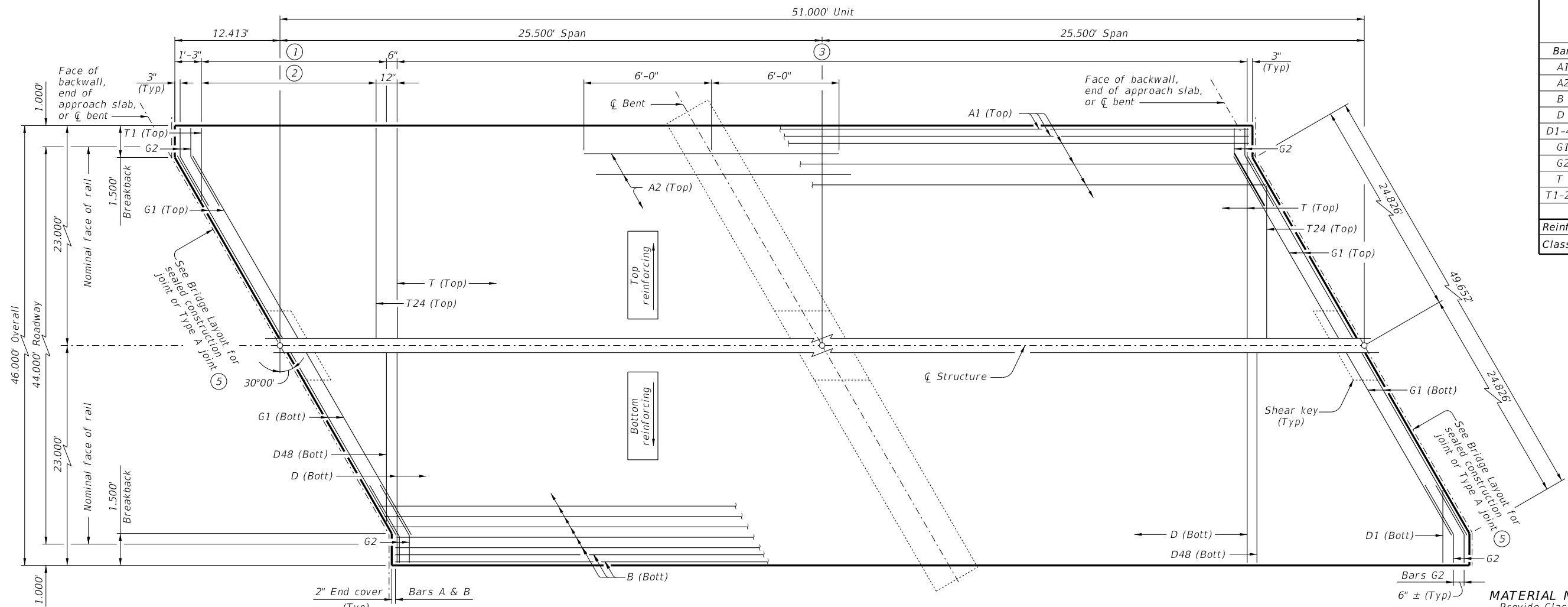


DISCLAIMER: This standard is governed by the "Texas Engineering Practice Act." No warranty of any kind is made by TxDOT for any purpose whatsoever. TxDOT assumes no responsibility for the conversion of this standard to other formats or for incorrect results or damages resulting from its use.

DATE: FILE:



PLAN

TABLE OF ESTIMATED QUANTITIES

CS-50-44-30

Bar	No.	Size	Length	Weight	
A1	50	#8	50' - 8"	6,764	
A2	45	#8	12' - 0"	1,442	
B	94	#8	50' - 8"	12,716	
D	53	#4	45' - 9"	1,620	
D1-48	96	#4	23' - 8" Av	1,518	
G1	8	#5	49' - 8"	414	
G2	16	#5	4' - 0"	67	
T	27	#4	45' - 9"	825	
T1-24	48	#4	23' - 2" Av	743	
Reinforcing Steel				Lb	26,109
Class "S" Concrete				CY	101.6

TABLE OF LOAD RATING FACTORS

INV	OPR
1.24	1.61

MATERIAL NOTES:
 Provide Class S concrete ($f'_c = 4,000$ psi).
 Provide Class S (HPC) concrete if shown elsewhere in the plans.
 Provide Grade 60 reinforcing steel.

GENERAL NOTES:
 Designed according to AASHTO LRFD Bridge Design Specifications.
 Load rated using Load and Resistance Factor Rating according to AASHTO Manual for Bridge Evaluation.
 Details shown are for right forward skew. See Bridge Layout for actual skew direction.
 See Miscellaneous Details for C-I-P Concrete Slab Spans (CS-MD) standard sheet for additional slab span details.
 Bar laps not permitted for Bars A and B. See applicable rail details for rail anchorage in slab.
 This standard does not support the use of transition bents.

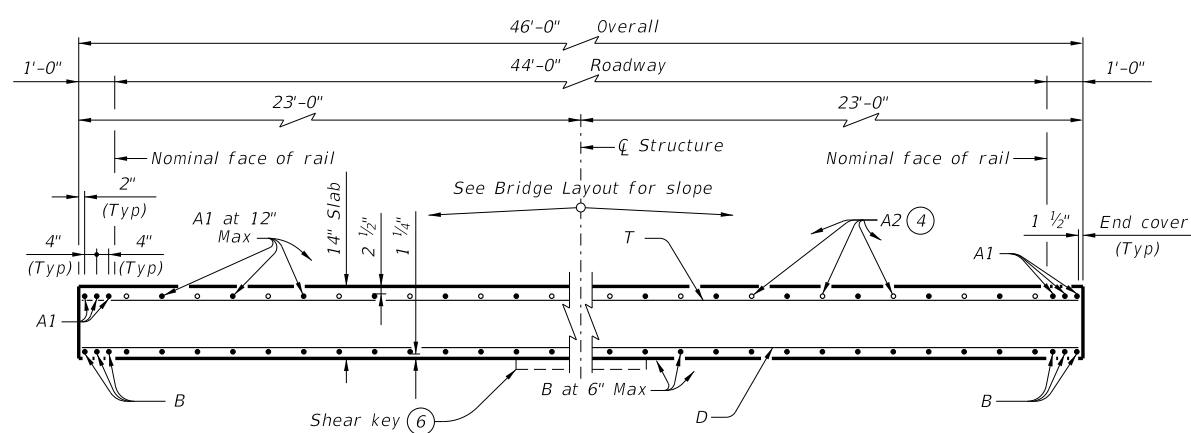
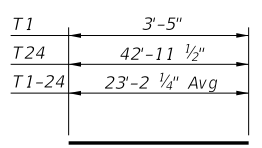
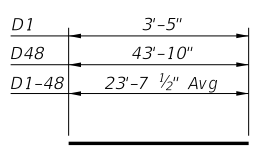
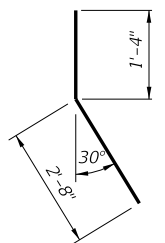
Cover dimensions are clear dimensions, unless noted otherwise. Reinforcing bar dimensions shown are out-to-out of bar.

HL93 LOADING

Texas Department of Transportation Bridge Division Standard

50' C-I-P CONTINUOUS SLAB UNIT
 (25.5'-25.5')
 44' ROADWAY 30° SKEW
CS-50-44-30

FILE: CS-CS504430-21.dgn	DN: LMO	CK: BMP	DW: LJC	CK: TAR
©TxDOT July 2021	CONT	SECT	JOB	HIGHWAY
REVISIONS				
DIST	COUNTY	SHEET NO.		



TYPICAL TRANSVERSE SECTION

⑥ At abutments and bents only.

- ① Bars D1-48 (Bott) at 6" Max spacing = 23'-4"
- ② Bars T1-24 (Top) at 12" Max spacing = 22'-10"
- ③ Bars D (Bott) at 6" Max spacing
Bars T (Top) at 12" Max spacing
- ④ Place Bars A2 between Bars A1 over bent. (See PLAN for placement.)
- ⑤ See standard CS-MD for fixed or expansion joint details.