

DISCLAIMER: This standard is governed by the "Texas Engineering Practice Act." No warranty of any kind is made by TxDOT for any purpose whatsoever. TxDOT assumes no responsibility for the conversion of this standard to other formats or for incorrect results or damages resulting from its use.

DATE: FILE:

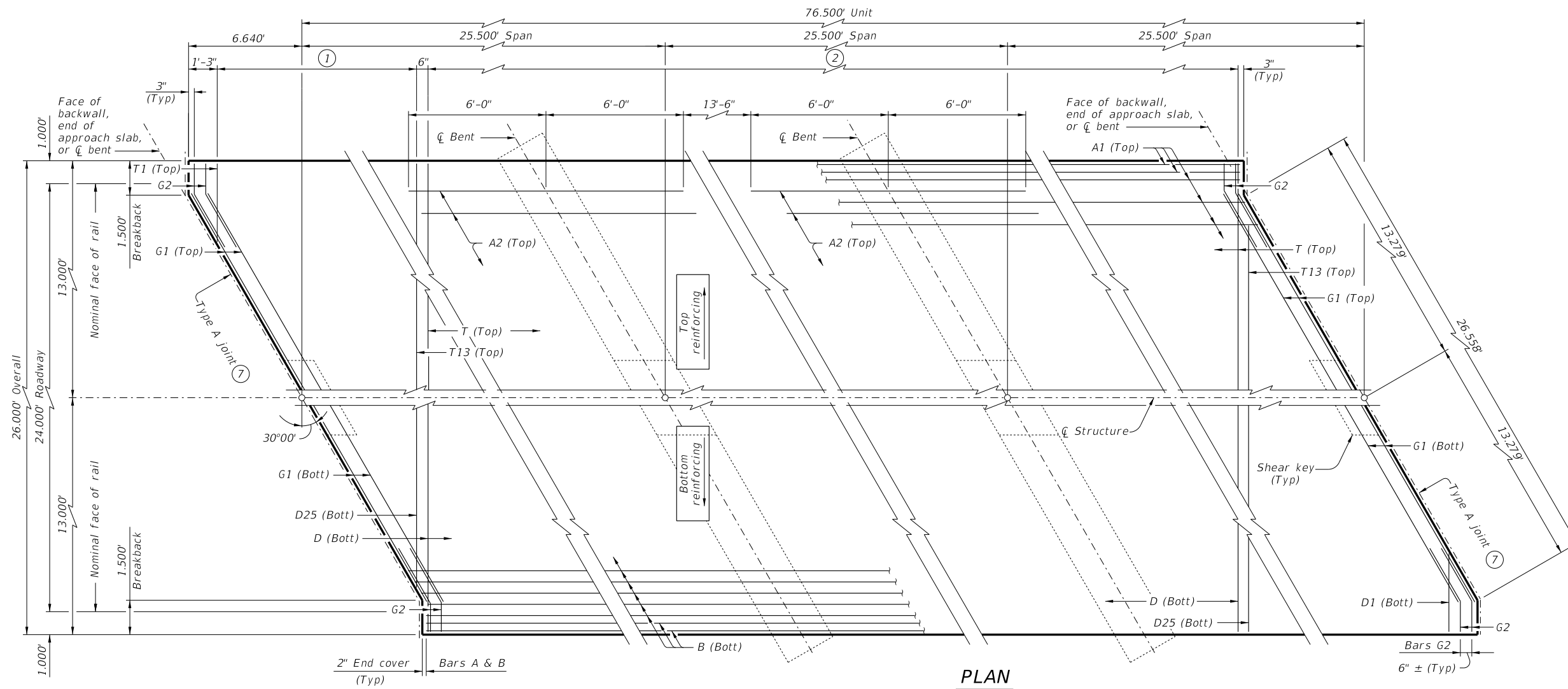


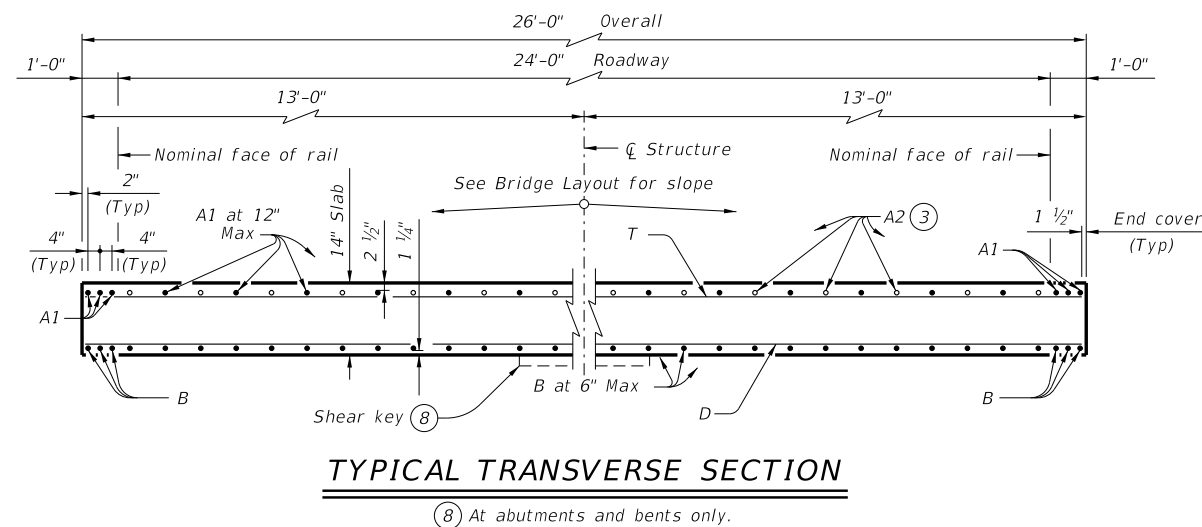
TABLE OF ESTIMATED QUANTITIES				
CS-75-24 (30°)				
Bar	No.	Size	Length	Weight
A1 (5)	30	#8	80' - 4"	6,435
A2	50	#8	12' - 0"	1,607
B (6)	54	#8	80' - 8"	11,630
D	127	#4	25' - 9"	2,185
D1-25	50	#4	13' - 8" Av	456
G1	8	#5	26' - 7"	222
G2	16	#5	4' - 0"	67
T	64	#4	25' - 9"	1,101
T1-13	26	#4	13' - 8" Av	237
Reinforcing Steel			Lb	23,936
Class "S" Concrete			CY	86.2

TABLE OF LOAD RATING FACTORS	
INV	OPR
1.16	1.50

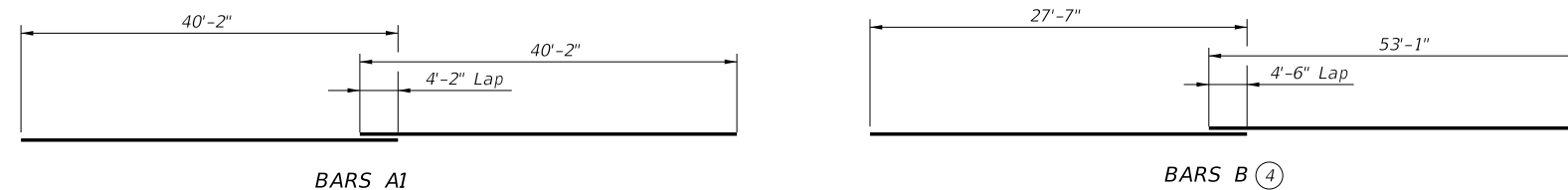
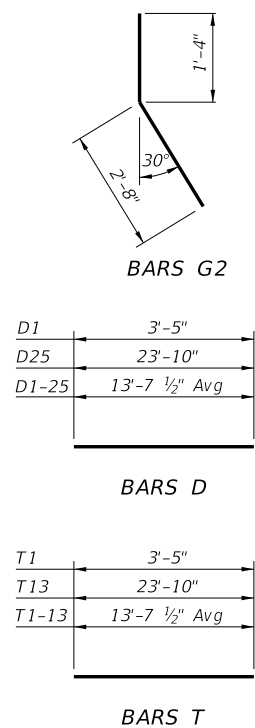
MATERIAL NOTES:
 Provide Class S concrete ($f'_c = 4,000$ psi).
 Provide Class S (HPC) concrete if shown elsewhere in the plans.
 Provide Grade 60 reinforcing steel.

GENERAL NOTES:
 Designed according to AASHTO LRFD Bridge Design Specifications.
 Load rated using Load and Resistance Factor Rating according to AASHTO Manual for Bridge Evaluation.
 Details shown are for right forward skew. See Bridge Layout for actual skew direction.
 See Miscellaneous Details for C-I-P Concrete Slab Spans (CS-MD) standard sheet for additional slab span details.
 Additional bar laps not permitted for Bars A1 and B.
 See applicable rail details for rail anchorage in slab.
 This standard does not support the use of transition bents.

Cover dimensions are clear dimensions, unless noted otherwise. Reinforcing bar dimensions shown are out-to-out of bar.



- ① Bars T1-13 (Top) at 12" Max spacing = 11'-9 1/2"
Bars D1-25 (Bott) at 6" Max spacing = 11'-9 1/2"
- ② Bars T (Top) at 12" Max spacing
Bars D (Bott) at 6" Max spacing
- ③ Place Bars A2 between Bars A1 over bent. (See PLAN for placement.)
- ④ Alternate splices over supports.
- ⑤ Length shown includes one 4'-2" lap splice.
- ⑥ Length shown includes one 4'-6" lap splice.
- ⑦ See standard CS-MD for expansion joint details.



HL93 LOADING

		Bridge Division Standard		
76.5' C-I-P CONTINUOUS SLAB UNIT (25.5'-25.5'-25.5') 24' ROADWAY 30° SKEW CS-75-24-30				
FILE: CS-CS752430-21.dgn	DN: LMO	CK: BMP	DW: LJC	CK: TAR
©TxDOT July 2021	CONT	SECT	JOB	HIGHWAY
REVISIONS		DIST		COUNTY
				SHEET NO.