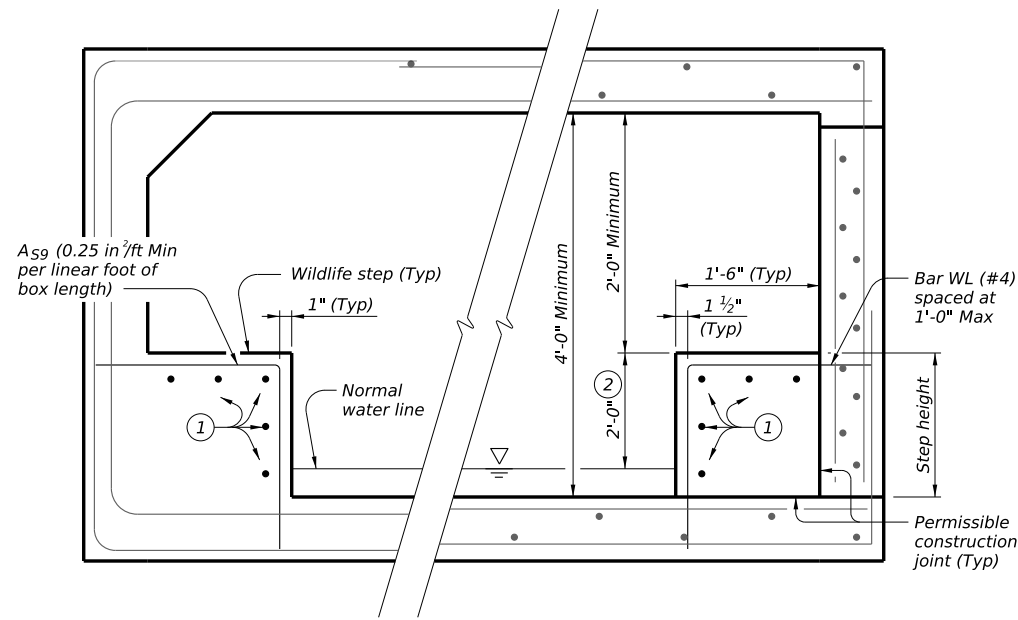
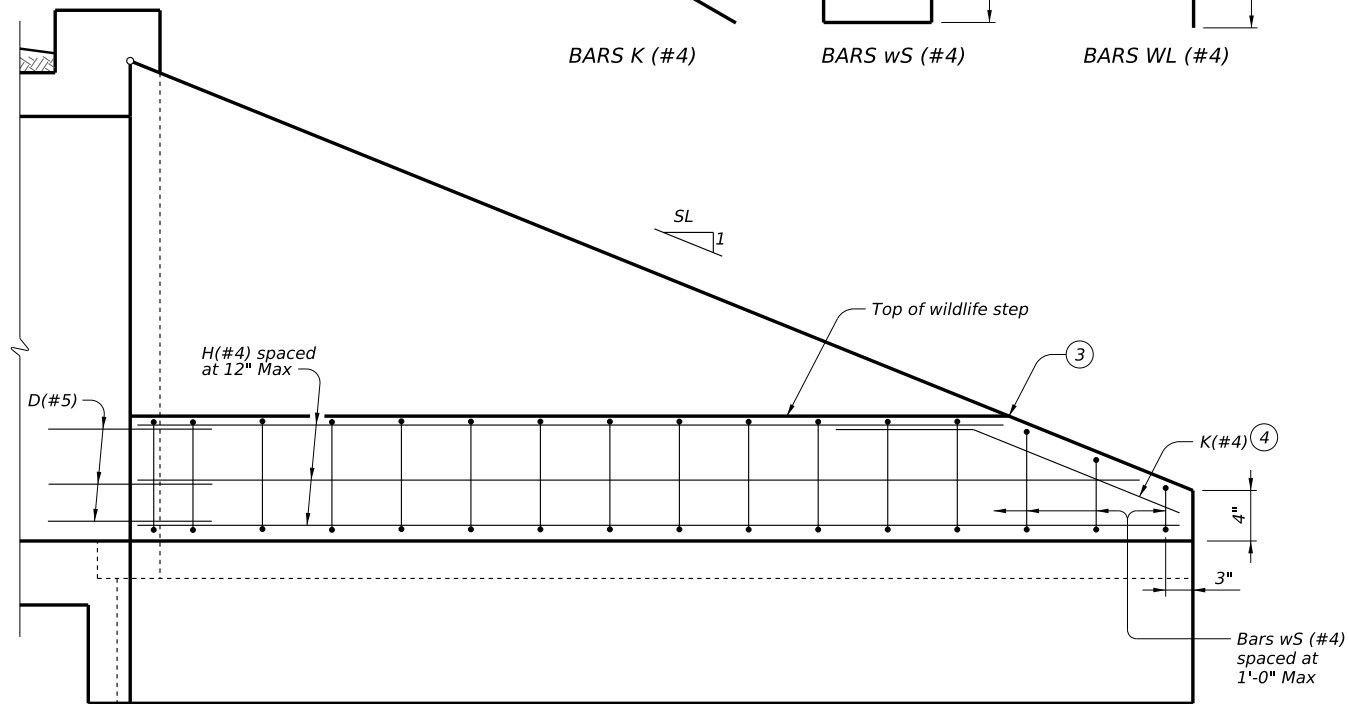


DISCLAIMER: The use of this standard is governed by the "Texas Engineering Practice Act". No warranty of any kind is made by TxDOT for any purpose whatsoever. TxDOT assumes no responsibility for the conversion of this standard to other formats or for incorrect results or damages resulting from its use.



PRE-CAST CULVERT **CAST-IN-PLACE CULVERT**
 (Showing option A, option B similar)
CULVERT SECTION WITH WILDLIFE STEP



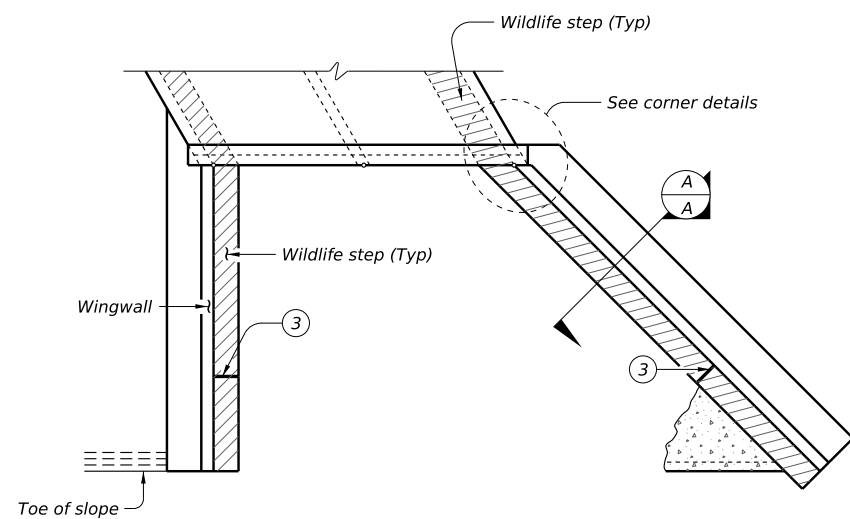
WINGWALL ELEVATION WITH WILDLIFE STEP
 (Wingwall reinforcement omitted for clarity.)

- ① Longitudinal reinforcing spaced at 12" Max for each wildlife step.
- ② 2'-0" step height above normal water line.
- ③ Taper wildlife steps with slope of wingwall when wingwall height is less than 2'-0".
- ④ Lap one Bar K with each Bar H in top of wildlife step.
- ⑤ Step height - 3".
- ⑥ Step height + (bottom slab thickness - 3").
- ⑦ Step width + (culvert wall thickness - 3").

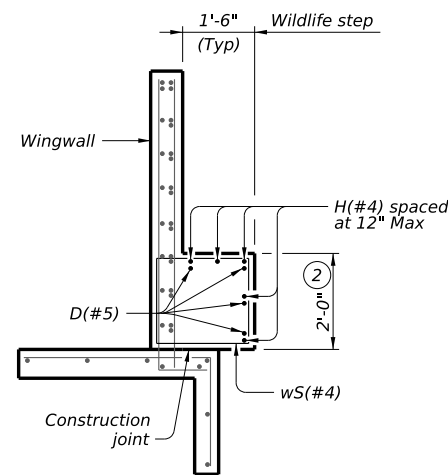
MATERIAL NOTES:
 Provide Class C concrete ($f'_c = 3,600$ psi).
 Provide Class H concrete ($f'_c = 5,000$ psi) when wildlife step is cast with pre-cast box culvert.
 Provide Grade 60 reinforcing steel.
 Provide galvanized reinforcing steel if required elsewhere in the plans.

GENERAL NOTES:
 Designed according to AASHTO LRFD Bridge Design Specifications.
 See Single Box Culverts Pre-Cast (SCP), Single Box Culverts Cast-in-Place (SCC), or Multiple Box Culverts Cast-in-Place (MCC) for culvert reinforcement, dimensions, and additional information.
 See Concrete Wingwalls with Straight Wings (SW-O), with Flared Wings (FW-O), or Flared Wings for Skewed (FW-S) Box Culverts for wingwall reinforcement, dimensions, and additional information.

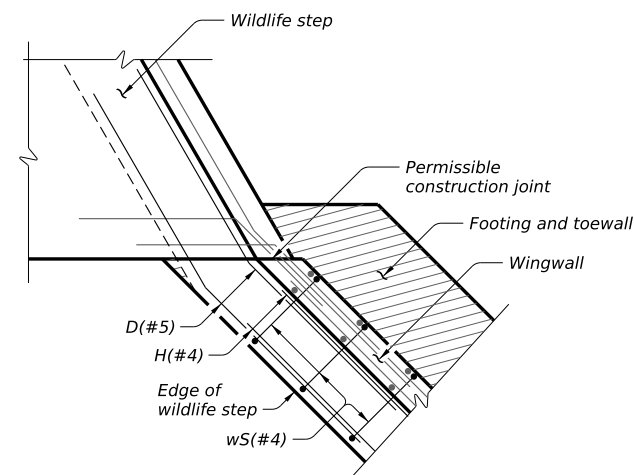
Cover dimensions are clear dimensions, unless noted otherwise. Reinforcing bar dimensions shown are out-to-out of bar.



PLAN



SECTION A-A



CORNER DETAILS

CULVERT WINGWALL WITH WILDLIFE STEP
 (Showing FW-S, FW-O and SW-O similar.)

HL93 LOADING

		Bridge Division Standard	
WILDLIFE STEP FOR BOX CULVERTS			
WSBC			
FILE: E-WSBC-24.dgn	DN: TAR	CK: SRW	DW: JER
©TxDOT June 2024	CONT	SECT	JOB
REVISIONS	DIST		COUNTY
			SHEET NO.

DATE:
FILE: