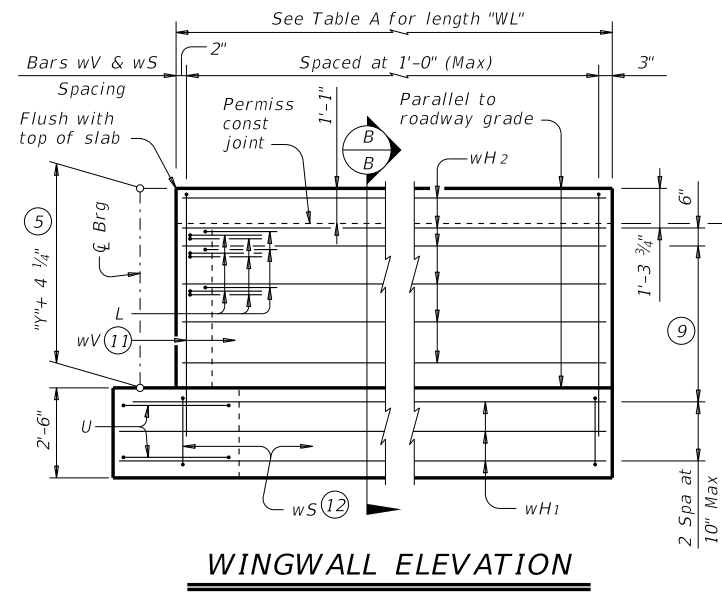
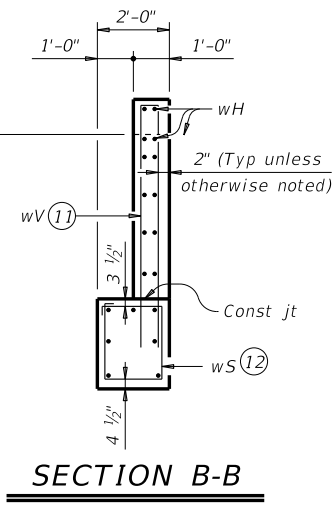


DISCLAIMER: This standard is governed by the "Texas Engineering Practice Act". No warranty of any kind is made by TxDOT for any purpose whatsoever. TxDOT assumes no responsibility for the conversion of this standard to other formats or for incorrect results or damages resulting from its use.

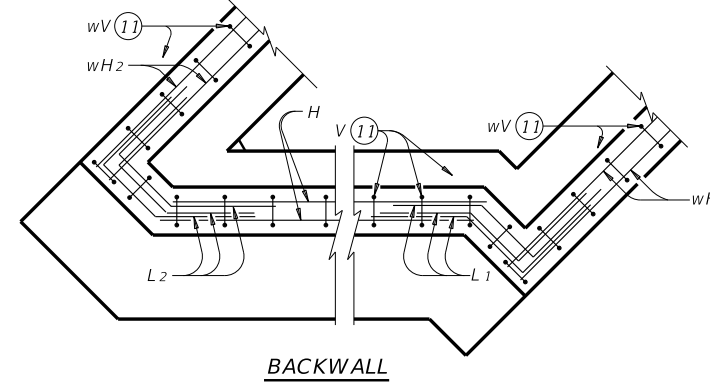
DATE:
FILE:



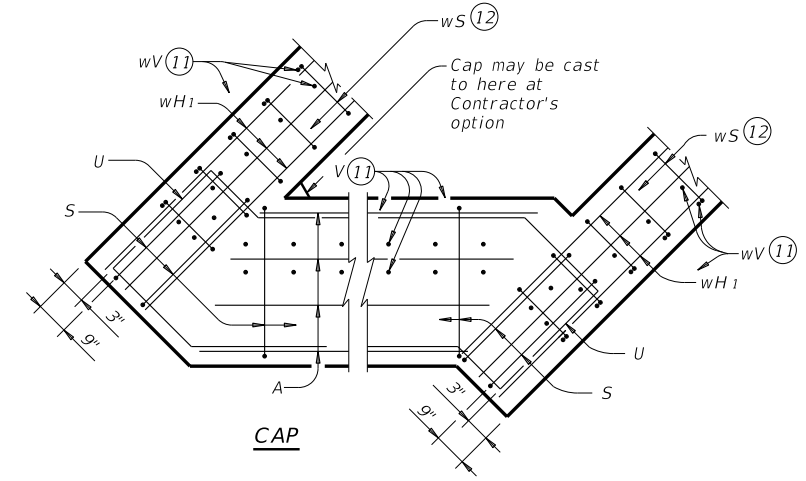
WINGWALL ELEVATION



SECTION B-B

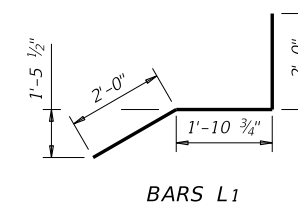
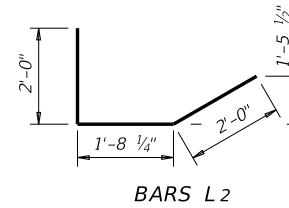
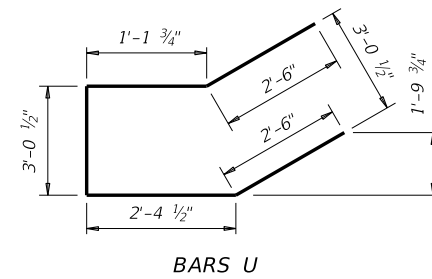
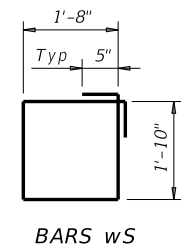
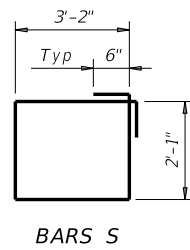
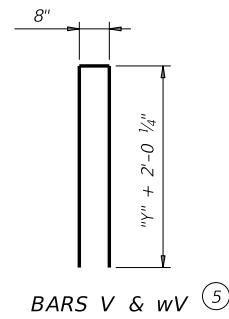


BACKWALL



CAP

CORNER DETAILS



- (5) See Span details for "y" value.
- (9) Spacing based on girder type:
Tx28 ~ 3 Spaces at 1'-0" Max
Tx34 ~ 3 Spaces at 1'-0" Max
Tx40 ~ 4 Spaces at 1'-0" Max
Tx46 ~ 4 Spaces at 1'-0" Max
Tx54 ~ 5 Spaces at 1'-0" Max
- (11) Field bend as needed to clear piles.
- (12) Adjust as required to avoid piling.

		Bridge Division Standard	
ABUTMENTS TYPE TX28 THRU TX54 PRESTR CONC I-GIRDERS 28' ROADWAY 45° SKEW			
AIG-28-45			
FILE: IG-AIG2845-17.dgn	DN: TAR	CK: KCM	DW: JTR
©TxDOT August 2017	CONT	SECT	JOB
REVISIONS		HIGHWAY	
DIST		COUNTY	SHEET NO.

