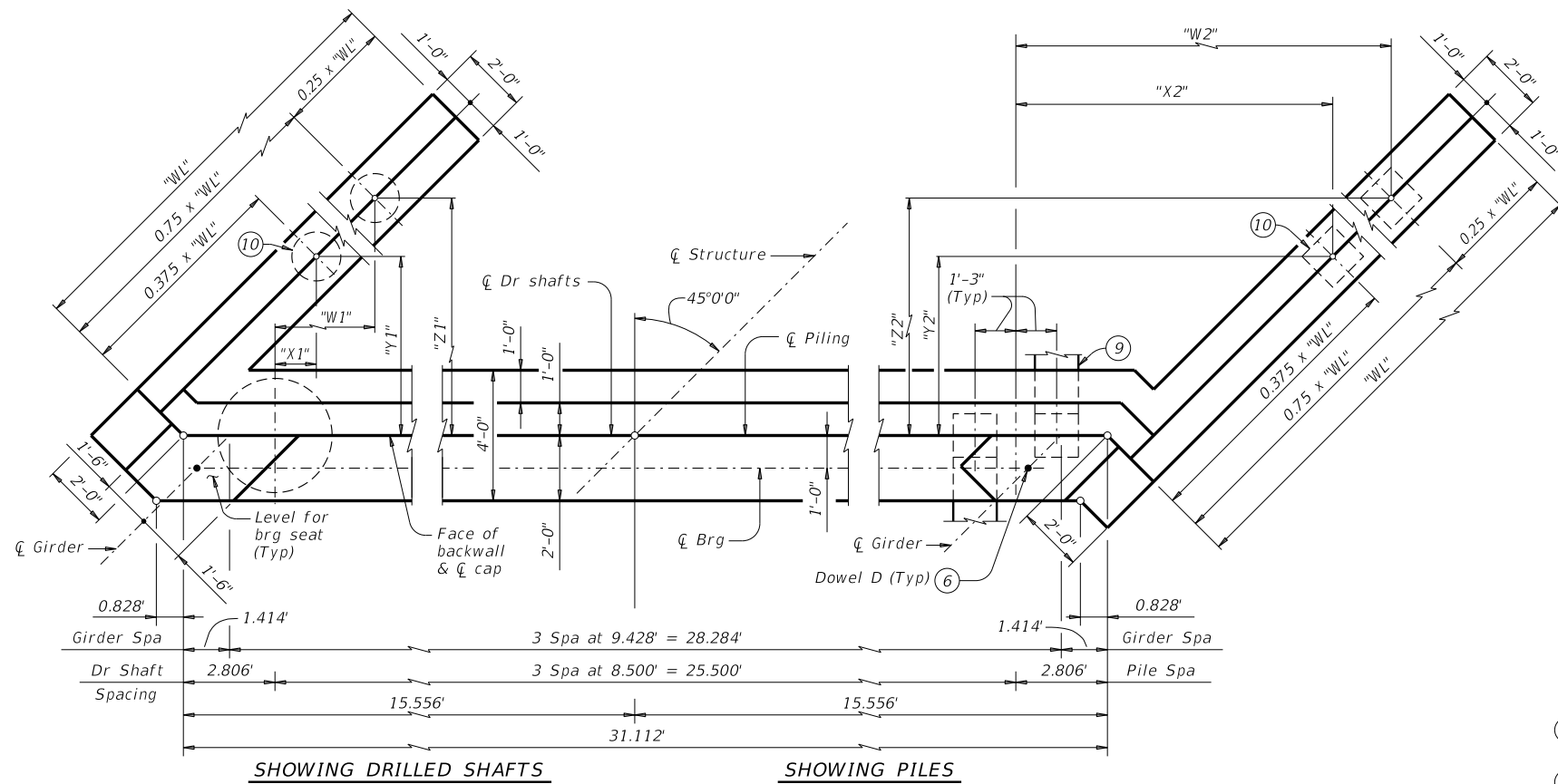
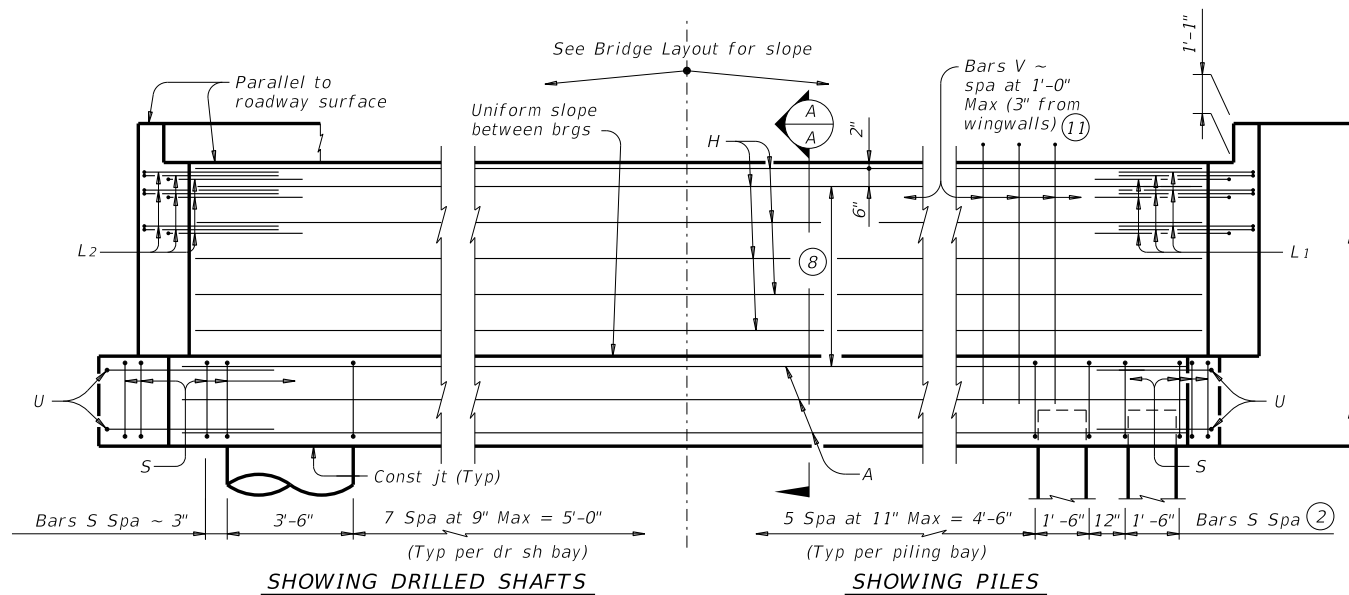


DISCLAIMER: This standard is governed by the "Texas Engineering Practice Act". No warranty of any kind is made by TxDOT for any purpose whatsoever. TxDOT assumes no responsibility for the conversion of this standard to other formats or for incorrect results or damages resulting from its use.

DATE: FILE:

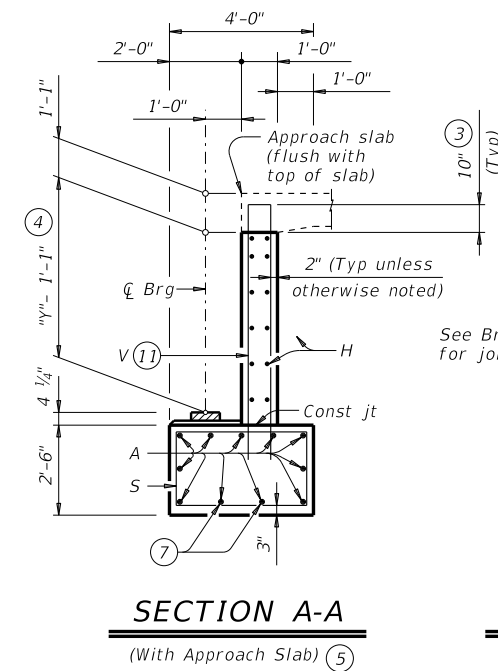


PLAN 1



ELEVATION

Header Slope	Girder Type	Wingwall Type	Wingwall Lgth "WL"	"W1"	"X1"	"Y1"	"Z1"	"W2"	"X2"	"Y2"	"Z2"
2:1	Tx62	Founded	21.000'	7.623'	Not Applicable		11.844'	14.650'	Not Applicable		10.430'
3:1	Tx62	Founded	30.000'	12.396'	4.441'	8.662'	16.617'	19.423'	11.468'	7.248'	15.203'



SECTION A-A

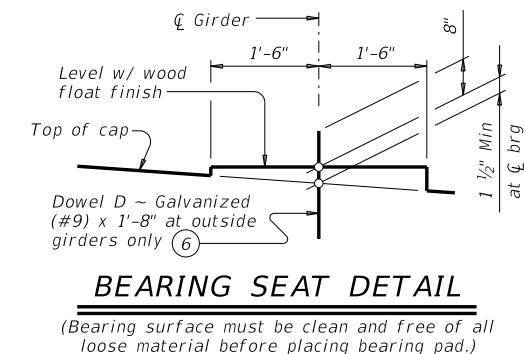
BACKWALL DETAIL

- See Table A for variable dimensions based on header slope.
- For piling larger than 16" adjust Bars S spacing as required to avoid piling.
- Increase as required to maintain 3" from finished grade.
- See Span details for "Y" value.
- See Bridge Layout to determine if approach slab is present.
- Omit Dowels D at end of multi-span unit. Adjust reinforcing steel total accordingly.
- With pile foundations, move Bars A shown to clear piles.
- 5 Spaces at 1'-0" Max.
- See Detail A on FD standard.
- See Table A to determine if this wingwall foundation is required.
- Field bend as needed to clear piles.

GENERAL NOTES:
 Designed according to AASHTO LRFD Bridge Design Specifications.
 See Bridge Layout for header slope and foundation type, size and length.
 See Common Foundation Details (FD) standard sheet for all foundation details and notes.
 See Concrete Riprap (CRR) standard sheet or Stone Riprap (SRR) standard sheet for riprap attachment details, if applicable.
 See applicable rail details for rail anchorage in wingwalls.
 Details are drawn showing right forward skew. See Bridge Layout for actual skew direction.
 These abutment details may be used with standard SIG-62-24-45 only.

Cover dimensions are clear dimensions, unless noted otherwise.
 Reinforcing bar dimensions shown are out-to-out of bar.

MATERIAL NOTES:
 Provide Class C concrete ($f'c = 3,600$ psi).
 Provide Class C (HPC) concrete if shown elsewhere in the plans.
 Provide Grade 60 reinforcing steel.
 Galvanize dowel bars D.



BEARING SEAT DETAIL

(Bearing surface must be clean and free of all loose material before placing bearing pad.)

Span Length	Girder Type Tx62	
	Tons/Shaft	Tons/Pile
60	66	56
65	69	58
70	72	59
75	75	61
80	78	62
85	81	64
90	84	65
95	87	67
100	90	68
105	93	70
110	96	71
115	99	73
120	102	74
125	105	76
130	107	77
135	110	79

HL93 LOADING SHEET 1 OF 2

Texas Department of Transportation
 Bridge Division Standard

ABUTMENTS
 TYPE TX62
 PRESTR CONC I-GIRDERS
 24' ROADWAY 45° SKEW

AIG-62-24-45

FILE: IG-AIG622445-17.dgn	DN: TAR	CK: KCM	DW: JTR	CK: TAR
©TxDOT August 2017	CONT	SECT	JOB	HIGHWAY
REVISIONS				
DIST	COUNTY			SHEET NO.

TABLE OF ESTIMATED QUANTITIES WITH 2:1 HEADER SLOPE

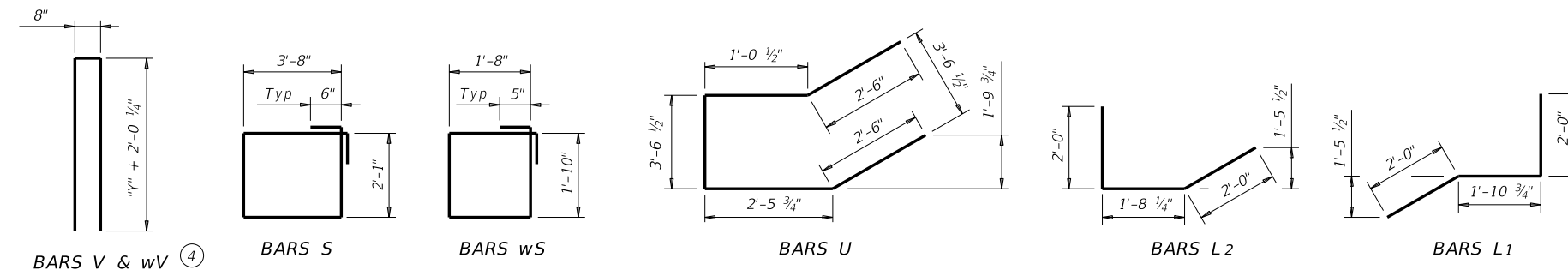
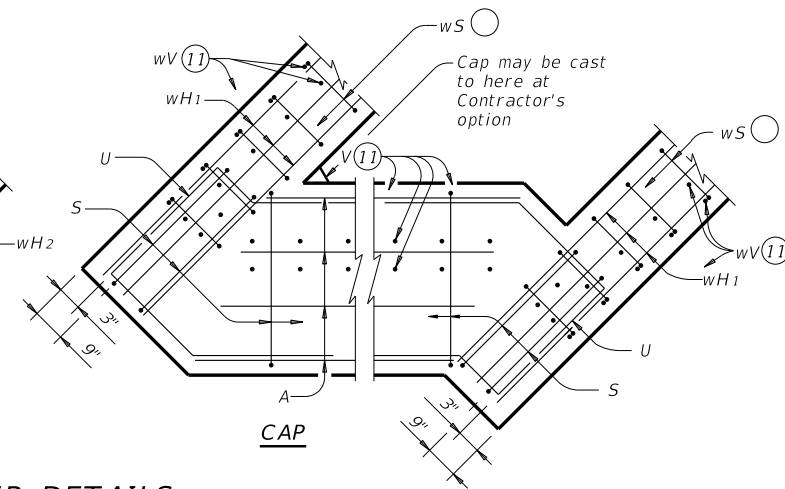
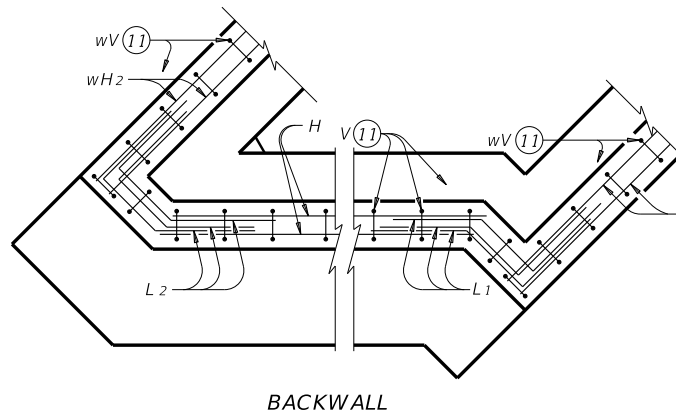
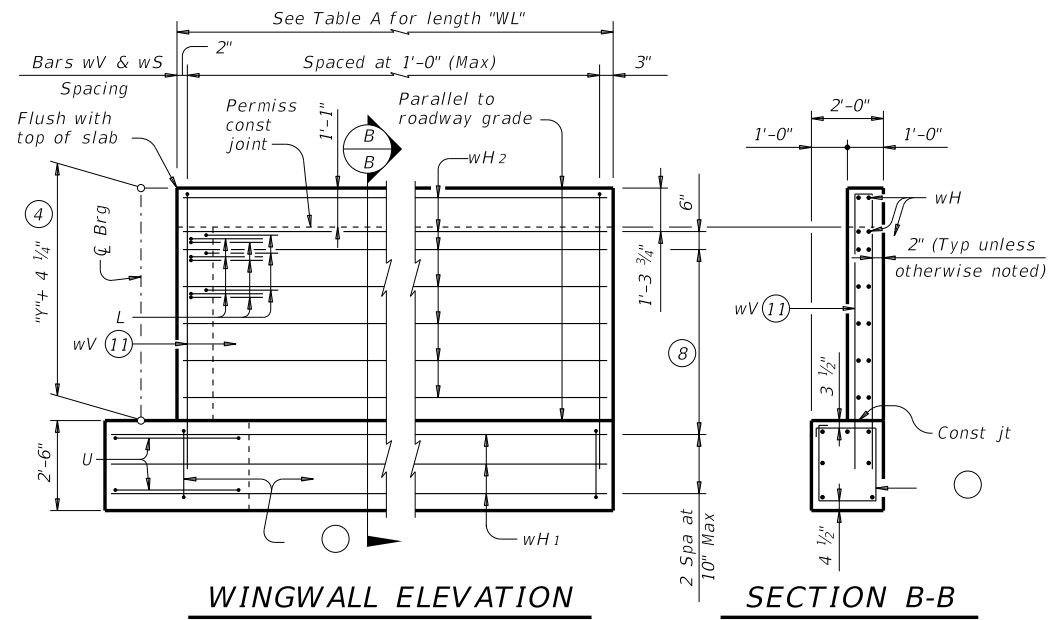
TYPE Tx62 Girders

Bar	No.	Size	Length	Weight	
A	11	#11	31'-1"	1,817	
D(6)	2	#9	1'-8"	11	
H	12	#6	31'-1"	560	
L1	9	#6	5'-11"	80	
L2	9	#6	5'-9"	78	
S	32	#5	12'-6"	417	
U	4	#6	12'-1"	73	
V	34	#5	17'-0"	603	
wH1	14	#6	22'-8"	477	
wH2	28	#6	20'-8"	869	
wS	44	#4	7'-10"	230	
wV	44	#5	17'-0"	780	
Reinforcing Steel				Lb	5,995
Class "C" Concrete				CY	36.9

TABLE OF ESTIMATED QUANTITIES WITH 3:1 HEADER SLOPE

TYPE Tx62 Girders

Bar	No.	Size	Length	Weight	
A	11	#11	31'-1"	1,817	
D(6)	2	#9	1'-8"	11	
H	12	#6	31'-1"	560	
L1	9	#6	5'-11"	80	
L2	9	#6	5'-9"	78	
S	32	#5	12'-6"	417	
U	4	#6	12'-1"	73	
V	34	#5	17'-0"	603	
wH1	14	#6	31'-8"	666	
wH2	28	#6	29'-8"	1,248	
wS	62	#4	7'-10"	324	
wV	62	#5	17'-0"	1,099	
Reinforcing Steel				Lb	6,976
Class "C" Concrete				CY	44.5



- (4)
- (6)
- (8)
- (11)
- (12)
- (13)

only (with approach s approach slab, add 1.3 CY Class "C" concrete and 187 lbs reinforcing steel for 4 additional Bars H.

DATE:
FILE:

HL93 LOADING

SHEET 2 OF 2

		Bridge Division Standard	
ABUTMENTS TYPE TX62 PRESTR CONC I-GIRDERS 24' ROADWAY 45° SKEW			
AIG-62-24-45			
FILE:	DN: TAR	CK: KCM	DW: JTR
©TxDOT August 2017	CONT	SECT	JOB
REVISIONS	DIST		COUNTY
			SHEET NO.