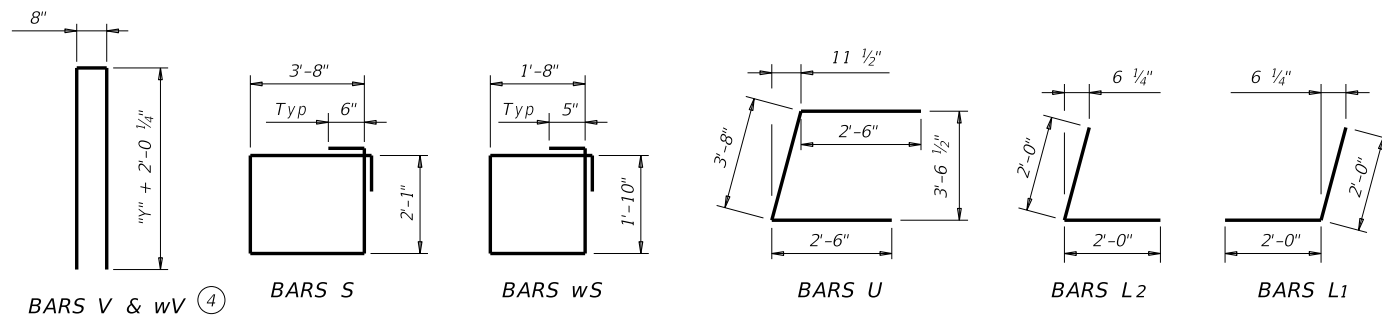
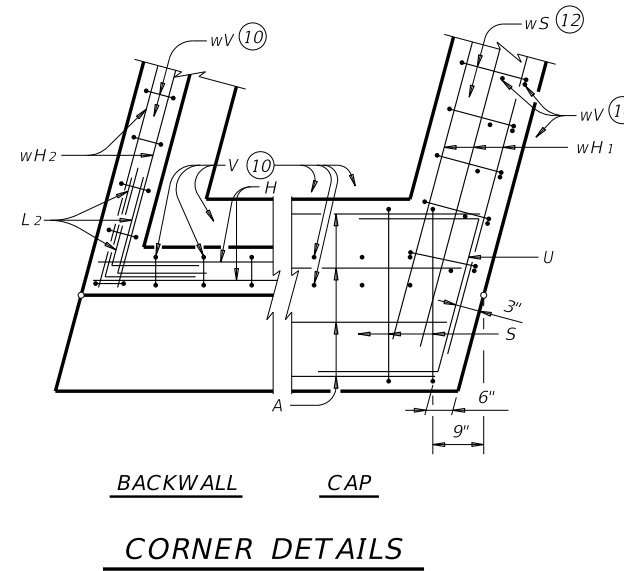
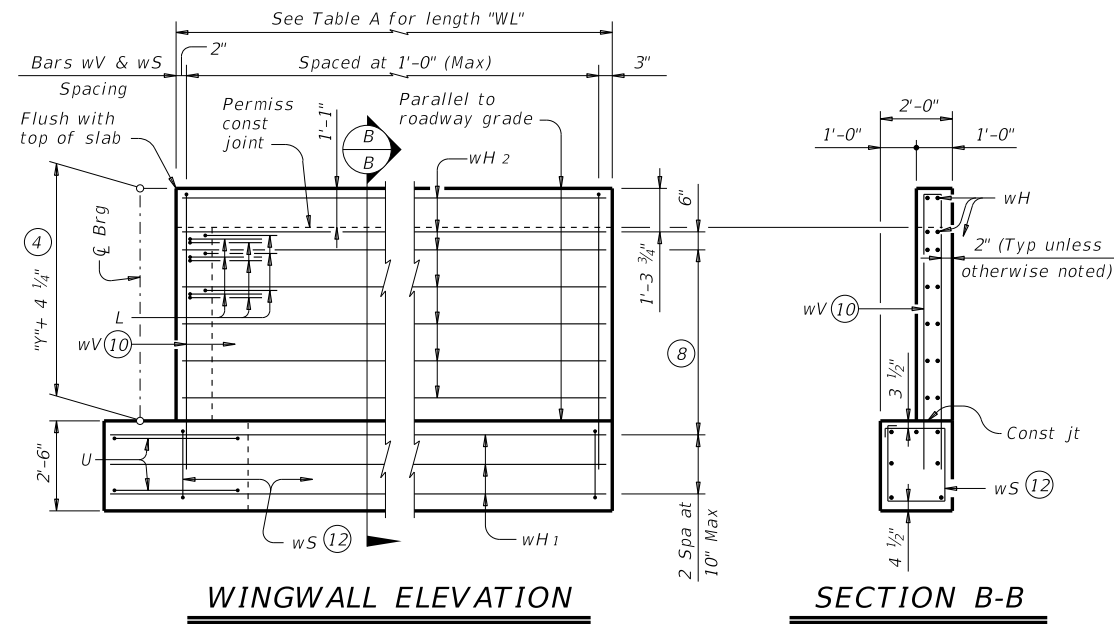


DISCLAIMER: This standard is governed by the "Texas Engineering Practice Act". No warranty of any kind is made by TxDOT for any purpose whatsoever. TxDOT assumes no responsibility for the conversion of this standard to other formats or for incorrect results or damages resulting from its use.

DATE:
FILE:



- ④ See Span details for "Y" value.
- ⑥ Omit Dowels D at end of multi-span unit. Adjust reinforcing steel total accordingly.
- ⑧ 5 Spaces at 1'-0" Max.
- ⑩ Field bend as needed to clear piles.
- ⑫ Adjust as required to avoid piling.
- ⑬ Quantities shown are for one abutment only (with approach slab). With no approach slab, add 1.2 CY Class "C" concrete and 185 lbs reinforcing steel for 4 additional Bars H.

TABLE OF ESTIMATED QUANTITIES WITH 2:1 HEADER SLOPE

| TYPE Tx62 Girders | | | | |
|--------------------|-----|------|--------|--------|
| Bar | No. | Size | Length | Weight |
| A | 10 | #11 | 30'-1" | 1,598 |
| D ⑥ | 2 | #9 | 1'-8" | 11 |
| H | 12 | #6 | 30'-9" | 554 |
| L1 | 9 | #6 | 4'-0" | 54 |
| L2 | 9 | #6 | 4'-0" | 54 |
| S | 27 | #5 | 12'-6" | 352 |
| U | 4 | #6 | 8'-8" | 52 |
| V | 30 | #5 | 17'-0" | 532 |
| wH1 | 14 | #6 | 15'-8" | 329 |
| wH2 | 28 | #6 | 13'-8" | 575 |
| wS | 30 | #4 | 7'-10" | 157 |
| wV | 30 | #5 | 17'-0" | 532 |
| Reinforcing Steel | | | Lb | 4,800 |
| Class "C" Concrete | | | CY | 28.6 |

TABLE OF ESTIMATED QUANTITIES WITH 3:1 HEADER SLOPE

| TYPE Tx62 Girders | | | | |
|--------------------|-----|------|--------|--------|
| Bar | No. | Size | Length | Weight |
| A | 10 | #11 | 30'-1" | 1,598 |
| D ⑥ | 2 | #9 | 1'-8" | 11 |
| H | 12 | #6 | 30'-9" | 554 |
| L1 | 9 | #6 | 4'-0" | 54 |
| L2 | 9 | #6 | 4'-0" | 54 |
| S | 27 | #5 | 12'-6" | 352 |
| U | 4 | #6 | 8'-8" | 52 |
| V | 30 | #5 | 17'-0" | 532 |
| wH1 | 14 | #6 | 22'-8" | 477 |
| wH2 | 28 | #6 | 20'-8" | 869 |
| wS | 44 | #4 | 7'-10" | 230 |
| wV | 44 | #5 | 17'-0" | 780 |
| Reinforcing Steel | | | Lb | 5,563 |
| Class "C" Concrete | | | CY | 34.5 |

HL93 LOADING

SHEET 2 OF 2

Texas Department of Transportation

Bridge Division Standard

ABUTMENTS

TYPE TX62

PRESTR CONC I-GIRDERS

28' ROADWAY 15° SKEW

AIG-62-28-15

| | | | | |
|---------------------------|---------|---------|---------|-----------|
| FILE: IG-AIG622815-17.dgn | DN: TAR | CK: KCM | DW: JTR | CK: TAR |
| ©TxDOT August 2017 | CONT | SECT | JOB | HIGHWAY |
| REVISIONS | | DIST | COUNTY | SHEET NO. |