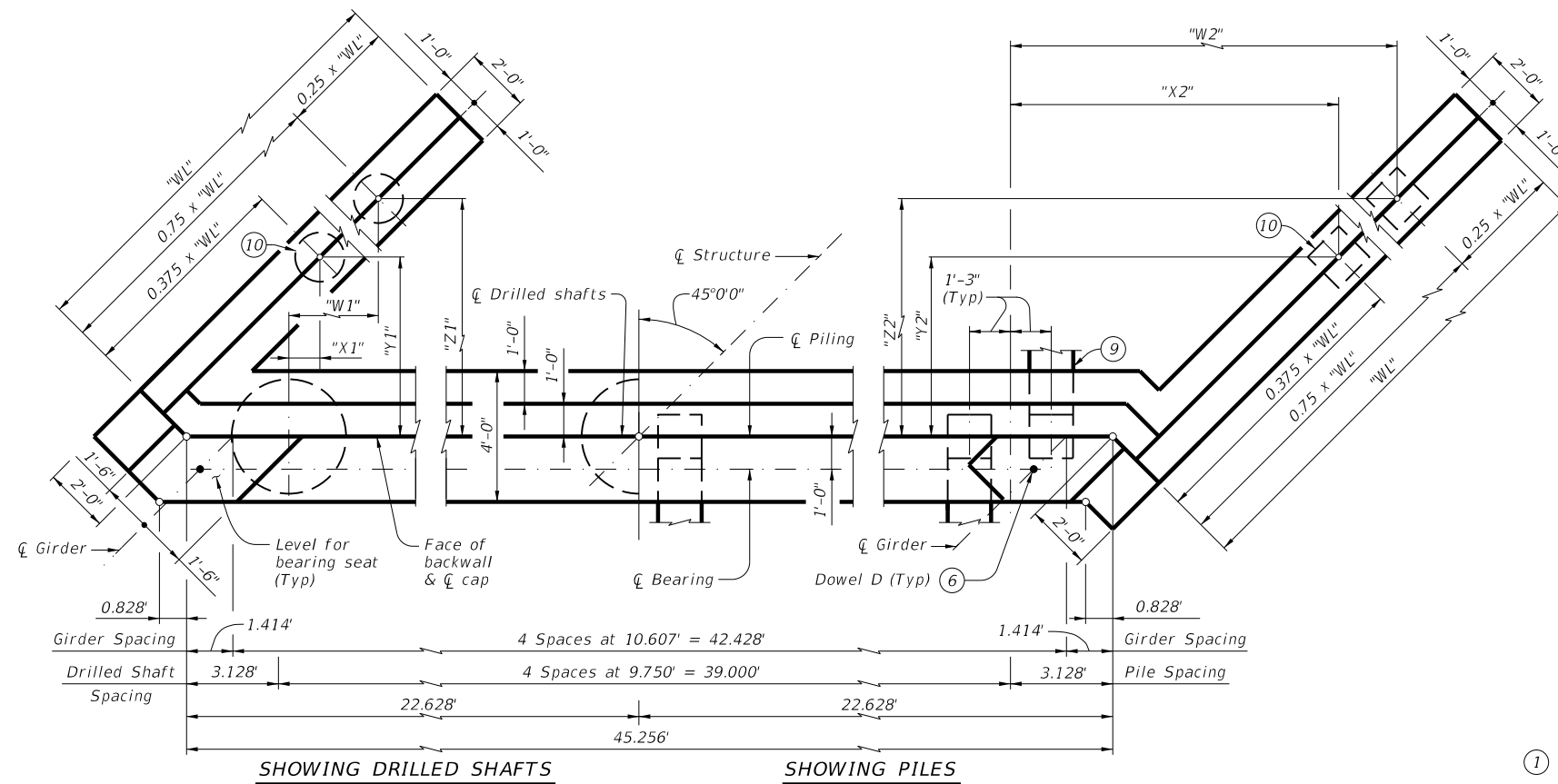
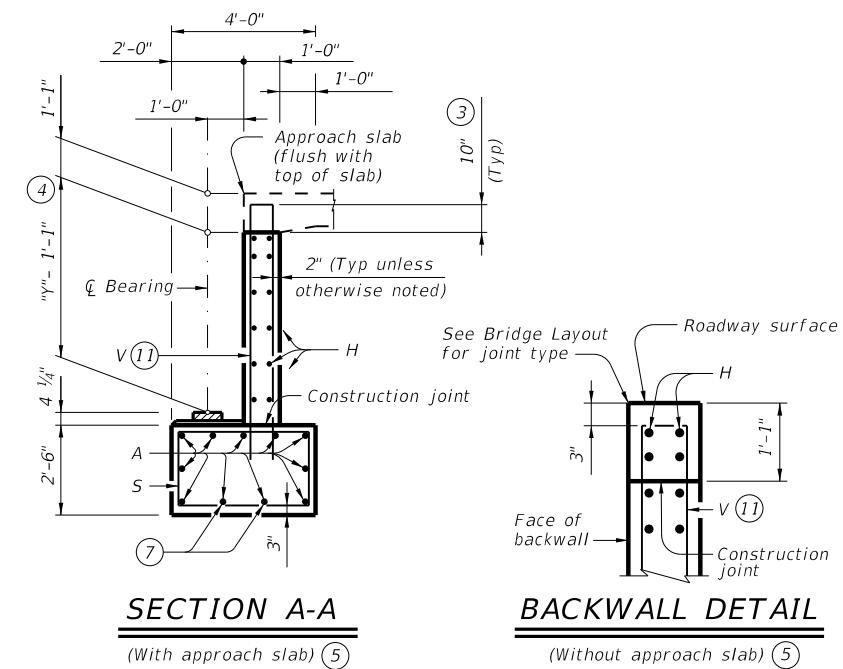


DISCLAIMER: This standard is governed by the "Texas Engineering Practice Act". No warranty of any kind is made by TxDOT for any purpose whatsoever. TxDOT assumes no responsibility for the conversion of this standard to other formats or for incorrect results or damages resulting from its use.

DATE: FILE:

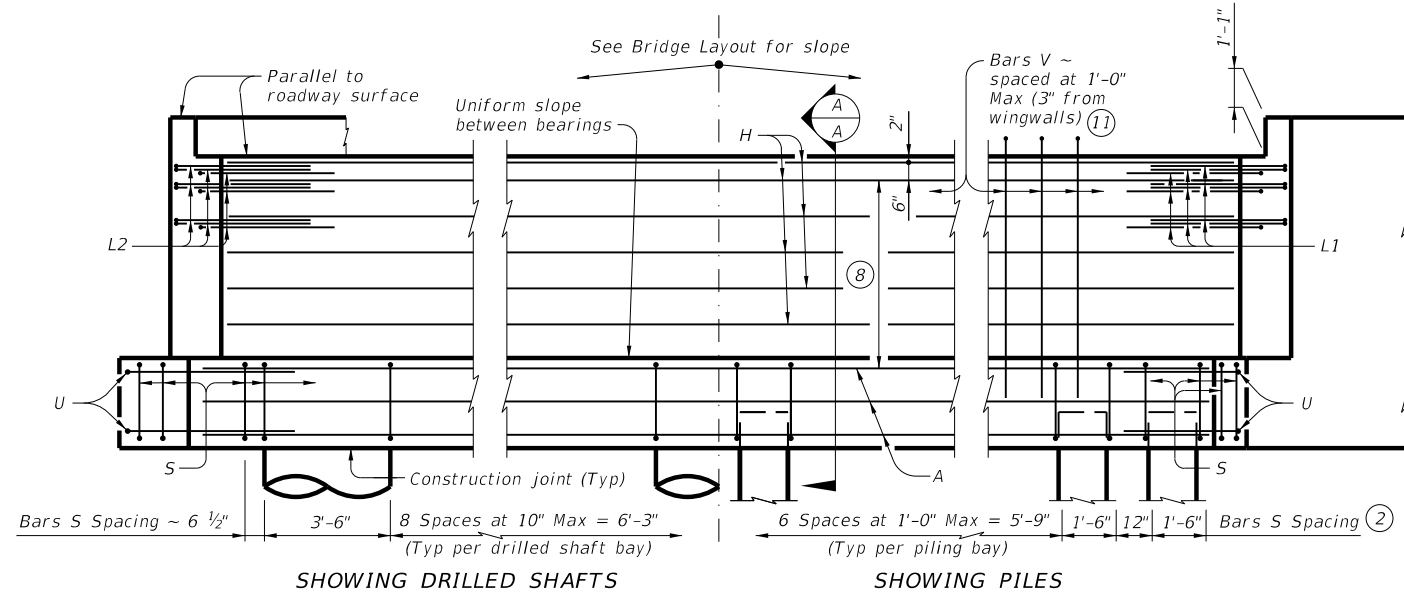


PLAN 1



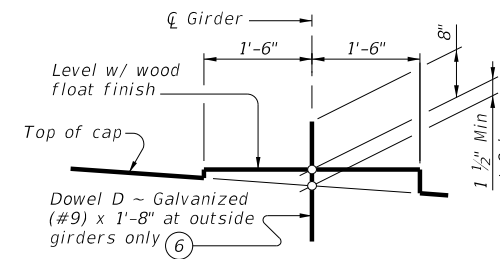
SECTION A-A  
(With approach slab) 5

BACKWALL DETAIL  
(Without approach slab) 5



ELEVATION

Header Slope	Girder Type	Wingwall Type	Wingwall Lgth "WL"	"W1"	"X1"	"Y1"	"Z1"	"W2"	"X2"	"Y2"	"Z2"
2:1	Tx62	Founded	21.000'	7.302'	Not Applicable	11.844'	14.971'	Not Applicable	Not Applicable	10.430'	
3:1	Tx62	Founded	30.000'	12.075'	4.120'	8.662'	16.617'	19.744'	11.789'	7.248'	15.203'



BEARING SEAT DETAIL

(Bearing surface must be clean and free of all loose material before placing bearing pad.)

- See Table A for variable dimensions based on header slope.
- For piling larger than 16" adjust Bars S spacing as required to avoid piling.
- Increase as required to maintain 3" from finished grade.
- See Span details for "Y" value.
- See Bridge Layout to determine if approach slab is present.
- Omit Dowels D at end of multi-span unit. Adjust reinforcing steel total accordingly.
- With pile foundations, move Bars A shown to clear piles.
- 5 Spaces at 1'-0" Max.
- See Detail A on the Common Foundation Details (FD) standard.
- See Table A to determine if this wingwall foundation is required.
- Field bend as needed to clear piles.

TABLE OF FOUNDATION LOADS

Span Length	Girder Type Tx62	
	Tons/Shaft	Tons/Pile
60	63	58
65	66	59
70	69	61
75	72	62
80	75	64
85	78	65
90	81	67
95	84	68
100	87	70
105	90	71
110	93	73
115	96	74
120	98	76
125	101	77
130	104	79
135	107	80

**MATERIAL NOTES:**  
 Provide Class C concrete ( $f'c = 3,600$  psi).  
 Provide Class C (HPC) concrete if shown elsewhere in the plans.  
 Provide Grade 60 reinforcing steel.  
 Galvanize dowel bars D.

**GENERAL NOTES:**  
 Designed according to AASHTO LRFD Bridge Design Specifications.  
 See Bridge Layout for header slope and foundation type, size and length.  
 See Common Foundation Details (FD) standard sheet for all foundation details and notes.  
 See Concrete Riprap (CRR) standard sheet or Stone Riprap (SRR) standard sheet for riprap attachment details, if applicable.  
 See applicable rail details for rail anchorage in wingwalls.  
 Details are drawn showing right forward skew. See Bridge Layout for actual skew direction.  
 These abutment details may be used with standard SIG-62-34-45 only.

Cover dimensions are clear dimensions, unless noted otherwise.  
 Reinforcing bar dimensions shown are out-to-out of bar.

HL93 LOADING SHEET 1 OF 2

Texas Department of Transportation  
 Bridge Division Standard

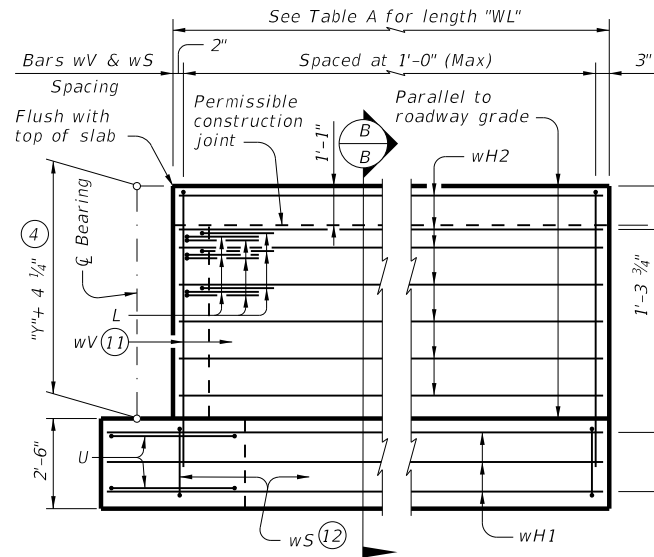
**ABUTMENTS**  
 TYPE TX62  
 PRESTR CONC I-GIRDERS  
 34' ROADWAY 45° SKEW

**AIG-62-34-45**

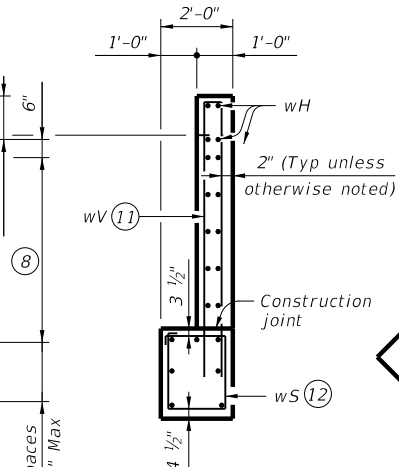
FILE: IG-AIG623445-24.dgn	DN: TAR	CK: VC	DW: SFS	CK: TAR
©TxDOT January 2023	CONT	SECT	JOB	HIGHWAY
REVISIONS				
05/2024: Updated FDN loads.	DIST	COUNTY		SHEET NO.

DISCLAIMER: This standard is governed by the "Texas Engineering Practice Act". No warranty of any kind is made by TxDOT for any purpose whatsoever. TxDOT assumes no responsibility for the conversion of this standard to other formats or for incorrect results or damages resulting from its use.

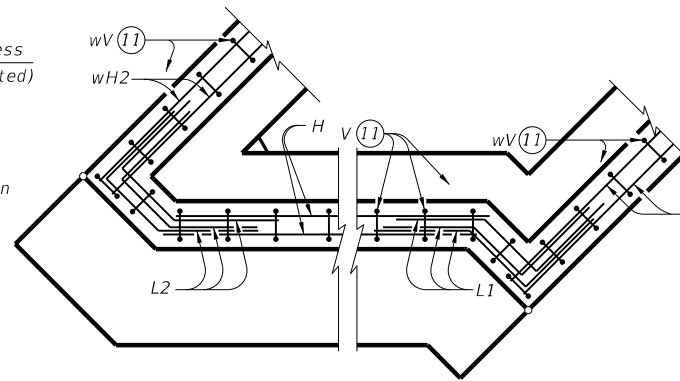
DATE:  
FILE:



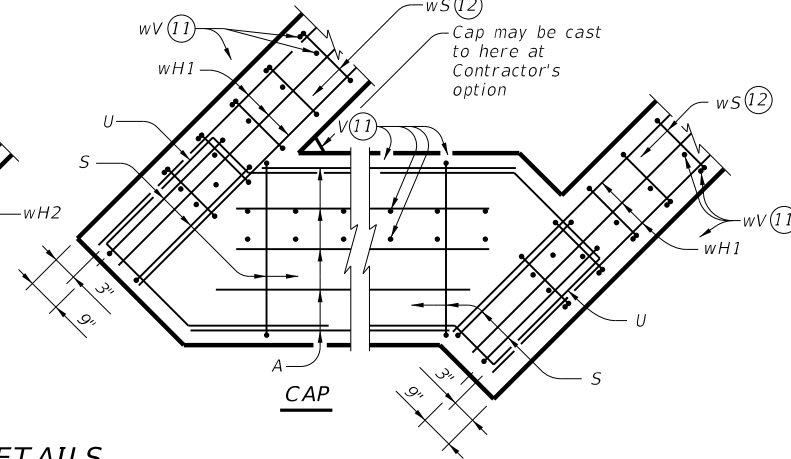
**WINGWALL ELEVATION**



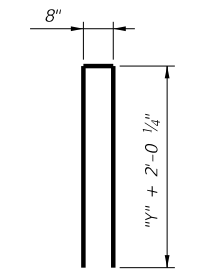
**SECTION B-B**



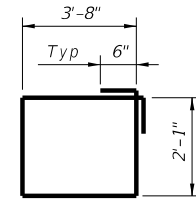
**BACKWALL**



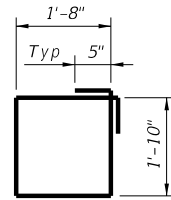
**CORNER DETAILS**



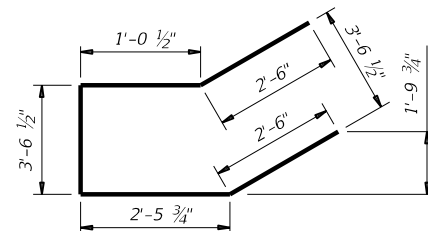
**BARS V & wV (4)**



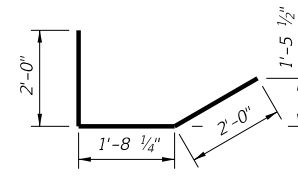
**BARS S**



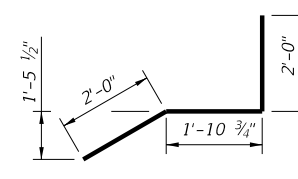
**BARS wS**



**BARS U**



**BARS L2**



**BARS L1**

(4) See Span details for "y" value.

(6) Omit Dowels D at end of multi-span unit. Adjust reinforcing steel total accordingly.

(8) 5 Spaces at 1'-0" Max.

(11) Field bend as needed to clear piles.

(12) Adjust as required to avoid piling.

(13) Quantities shown are for one abutment only (with approach slab). With no approach slab, add 1.9 CY Class "C" concrete and 272 lbs reinforcing steel for 4 additional Bars H.

**TABLE OF ESTIMATED QUANTITIES WITH 2:1 HEADER SLOPE (13)**

**TYPE Tx62 Girders**

Bar	No.	Size	Length	Weight
A	11	#11	45'-3"	2,645
D(6)	2	#9	1'-8"	11
H	12	#6	45'-3"	816
L1	9	#6	5'-11"	80
L2	9	#6	5'-9"	78
S	44	#5	12'-6"	574
U	4	#6	12'-1"	73
V	49	#5	17'-0"	869
wH1	14	#6	22'-8"	477
wH2	28	#6	20'-8"	869
wS	44	#4	7'-10"	230
wV	44	#5	17'-0"	780

Reinforcing Steel	Lb	7,502
Class "C" Concrete	CY	45.1

**TABLE OF ESTIMATED QUANTITIES WITH 3:1 HEADER SLOPE (13)**

**TYPE Tx62 Girders**

Bar	No.	Size	Length	Weight
A	11	#11	45'-3"	2,645
D(6)	2	#9	1'-8"	11
H	12	#6	45'-3"	816
L1	9	#6	5'-11"	80
L2	9	#6	5'-9"	78
S	44	#5	12'-6"	574
U	4	#6	12'-1"	73
V	49	#5	17'-0"	869
wH1	14	#6	31'-8"	666
wH2	28	#6	29'-8"	1,248
wS	62	#4	7'-10"	324
wV	62	#5	17'-0"	1,099

Reinforcing Steel	Lb	8,483
Class "C" Concrete	CY	52.7

HL93 LOADING

SHEET 2 OF 2



**ABUTMENTS**  
TYPE TX62  
PRESTR CONC I-GIRDERS  
34' ROADWAY 45° SKEW

**AIG-62-34-45**

FILE: IG-AIG623445-24.dgn	DN: TAR	CK: VC	DW: SFS	CK: TAR
©TxDOT January 2023	CONT	SECT	JOB	HIGHWAY
REVISIONS	DIST	COUNTY	SHEET NO.	
05/2024: Updated FDN loads.				