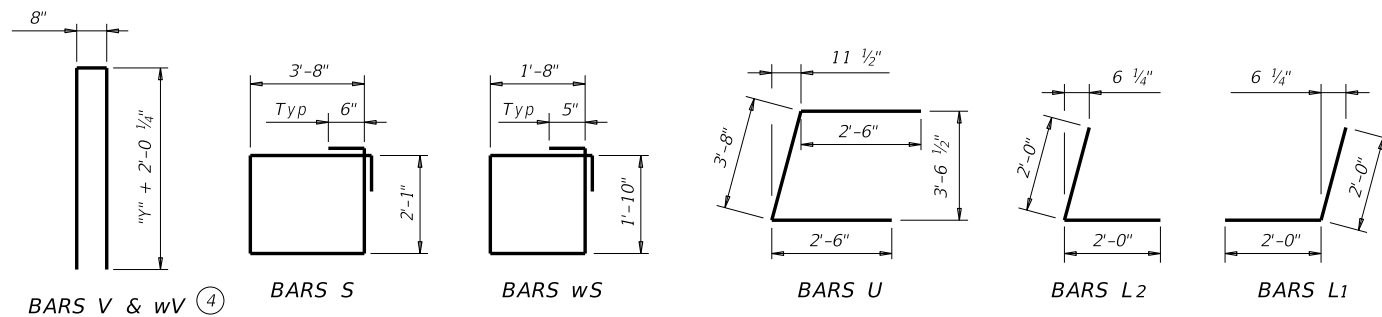
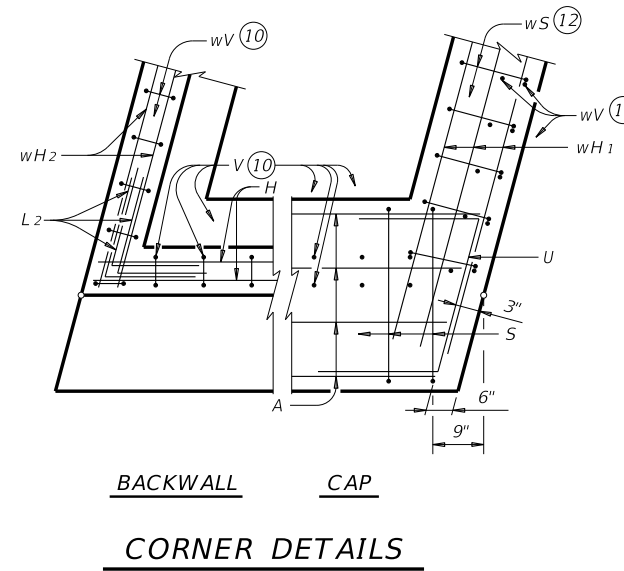
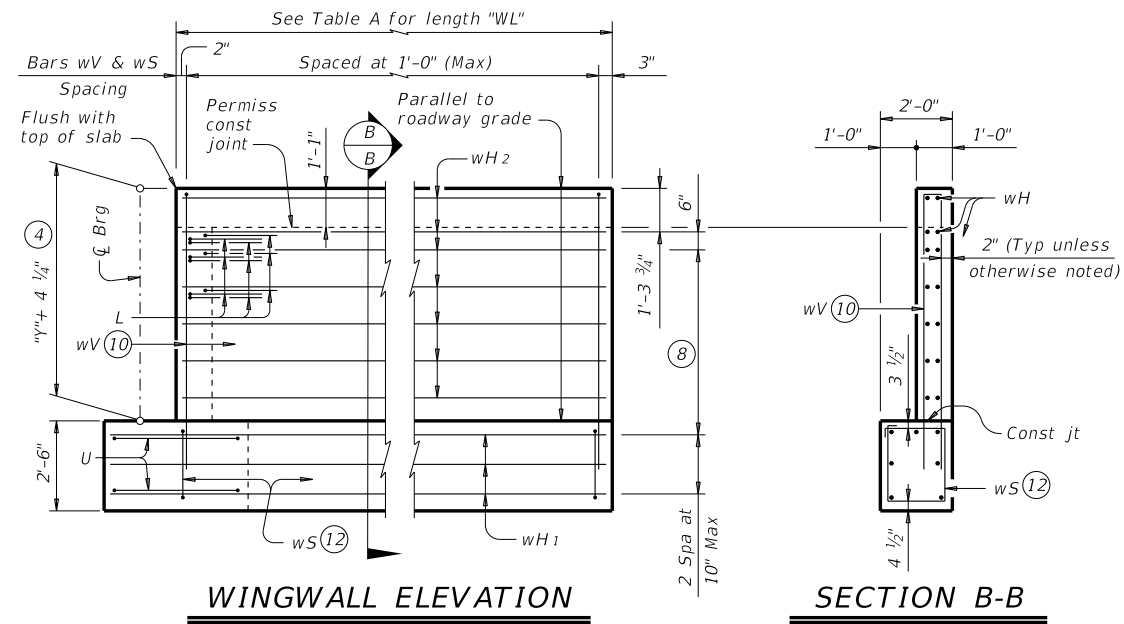


DISCLAIMER: This standard is governed by the "Texas Engineering Practice Act". No warranty of any kind is made by TxDOT for any purpose whatsoever. TxDOT assumes no responsibility for the conversion of this standard to other formats or for incorrect results or damages resulting from its use.

DATE:
FILE:



- ④ See Span details for "y" value.
- ⑥ Omit Dowels D at end of multi-span unit. Adjust reinforcing steel total accordingly.
- ⑧ 5 Spaces at 1'-0" Max.
- ⑩ Field bend as needed to clear piles.
- ⑫ Adjust as required to avoid piling.
- ⑬ Quantities shown are for one abutment only (with approach slab). With no approach slab, add 1.7 CY Class "C" concrete and 259 lbs reinforcing steel for 4 additional Bars H.

TABLE OF ESTIMATED QUANTITIES WITH 2:1 HEADER SLOPE

TYPE Tx62 Girders				
Bar	No.	Size	Length	Weight
A	10	#11	42'-6"	2,258
D ⑥	2	#9	1'-8"	11
H	12	#6	43'-2"	778
L1	9	#6	4'-0"	54
L2	9	#6	4'-0"	54
S	38	#5	12'-6"	495
U	4	#6	8'-8"	52
V	42	#5	17'-0"	745
wH1	14	#6	15'-8"	329
wH2	28	#6	13'-8"	575
wS	30	#4	7'-10"	157
wV	30	#5	17'-0"	532
Reinforcing Steel			Lb	6,040
Class "C" Concrete			CY	35.7

TABLE OF ESTIMATED QUANTITIES WITH 3:1 HEADER SLOPE

TYPE Tx62 Girders				
Bar	No.	Size	Length	Weight
A	10	#11	42'-6"	2,258
D ⑥	2	#9	1'-8"	11
H	12	#6	43'-2"	778
L1	9	#6	4'-0"	54
L2	9	#6	4'-0"	54
S	38	#5	12'-6"	495
U	4	#6	8'-8"	52
V	42	#5	17'-0"	745
wH1	14	#6	22'-8"	477
wH2	28	#6	20'-8"	869
wS	44	#4	7'-10"	230
wV	44	#5	17'-0"	780
Reinforcing Steel			Lb	6,803
Class "C" Concrete			CY	41.6

HL93 LOADING

SHEET 2 OF 2



**ABUTMENTS
TYPE TX62
PRESTR CONC I-GIRDERS
40' ROADWAY 15° SKEW**

AIG-62-40-15

FILE: IG-AIG624015-17.dgn	DN: TAR	CK: KCM	DW: JTR	CK: TAR
©TxDOT August 2017	CONT	SECT	JOB	HIGHWAY
REVISIONS	DIST			COUNTY
				SHEET NO.