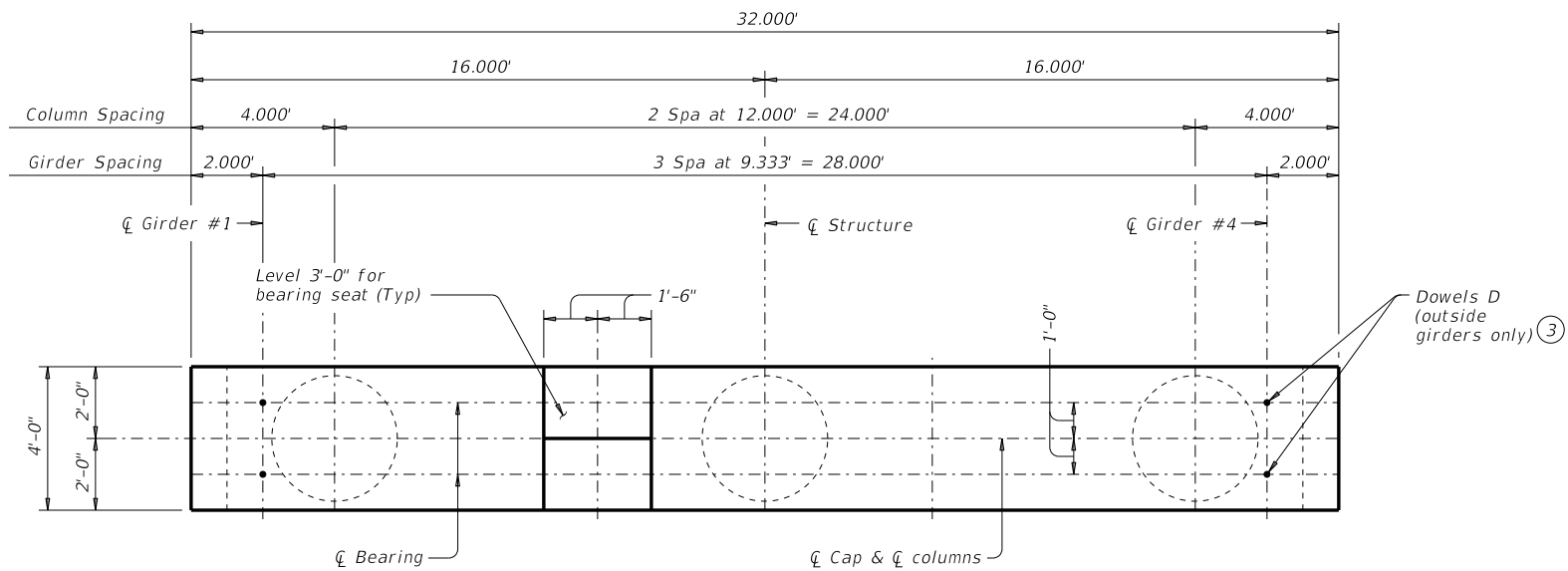
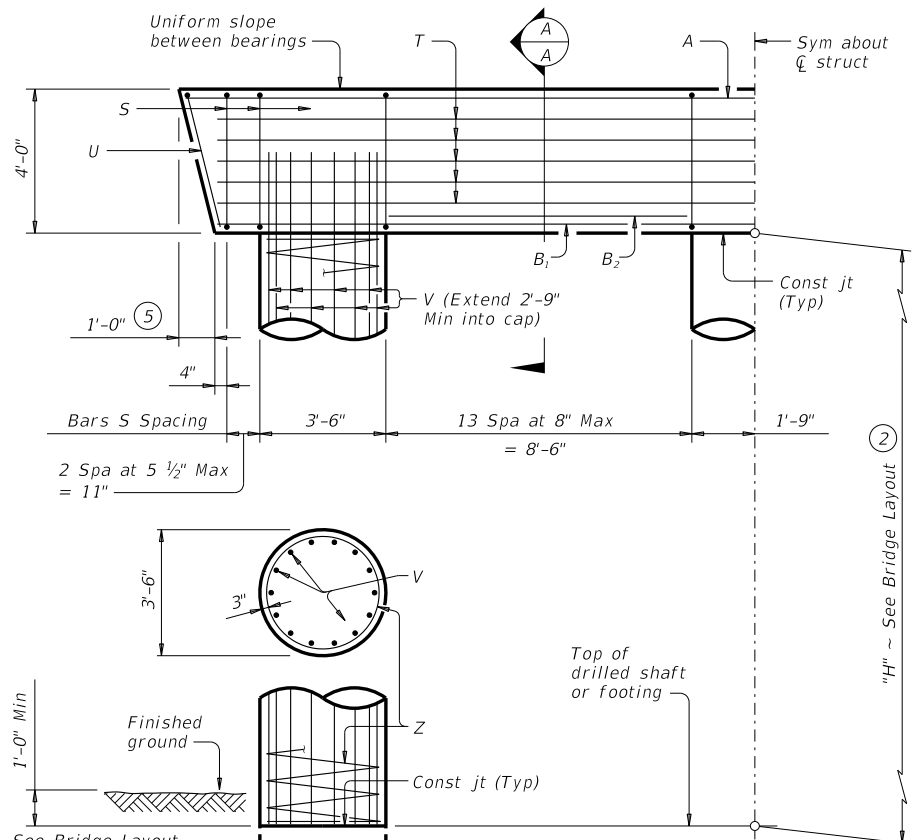


DISCLAIMER: The use of this standard is governed by the "Texas Engineering Practice Act". No warranty of any kind is made by TxDOT for any purpose whatsoever. TxDOT assumes no responsibility for the conversion of this standard to other formats or for incorrect results or damages resulting from its use.

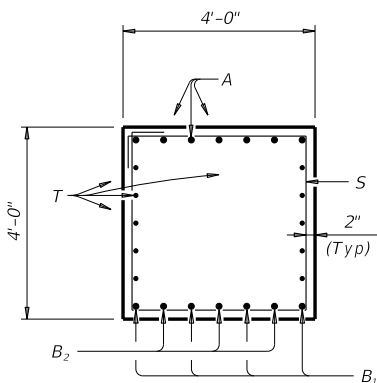
DATE: FILE:



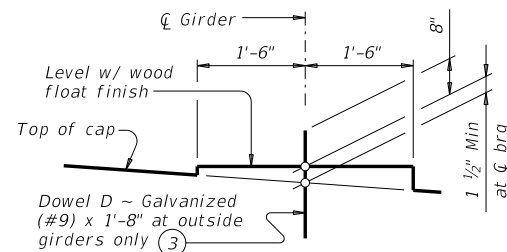
**PLAN**



**HALF ELEVATION**

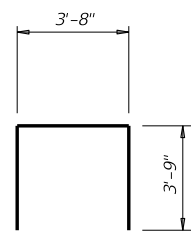


**SECTION A-A**

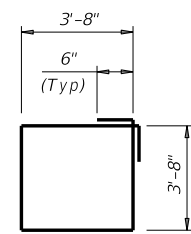


**BEARING SEAT DETAIL**

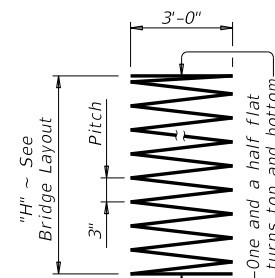
(Bearing surface must be clean and free of all loose material before placing bearing pad.)



BARS U



BARS S



BARS Z

- ① Quantities shown are based on an "H" value of 36'. For each linear foot variation in "H" value, make the following adjustments:  
 Bars V length, 1'-0"  
 Bars Z length, 37'-9"  
 Reinforcing steel, 219 Lb  
 Class "C" conc (col), 1.07 CY
- ② This standard may not be used for "H" heights exceeding 36'. In areas of very soft soil or where scour is anticipated, allowable "H" heights must be evaluated by the Engineer prior to the use of this standard.
- ③ Omit Dowels D at end of multi-span units. Adjust reinforcing steel total accordingly.
- ④ Foundation Loads based on "H" = 36'.
- ⑤ Measured parallel to top of cap cross-slope.

**TABLE OF ESTIMATED QUANTITIES ①**

Bar	No.	Size	Length	Weight
A	7	#11	31'- 6"	1,172
B <sub>1</sub>	4	#11	29'- 9"	632
B <sub>2</sub>	6	#11	8'- 6"	271
D ③	4	#9	1'- 8"	23
S	34	#5	15'- 8"	556
T	10	#5	29'- 9"	310
U	2	#5	11'- 2"	23
V	42	#9	38'- 9"	5,534
Z	3	#4	1387'- 3"	2,780
Reinforcing Steel				Lb 11,301
Class "C" Concrete (Cap)				CY 18.6
Class "C" Concrete (Col)				CY 38.5

**FOUNDATION LOADS ④**

Span Average	Drilled Shaft Loads	Pile Load (Tons/Pile)	
		4 Pile Ftg	5 Pile Ftg
Ft	Tons/Shaft		
60	161	43	35
65	169	45	37
70	178	48	39
75	186	50	40
80	195	52	42
85	204	54	44
90	212	56	46
95	221	58	47
100	229	60	49
105	238	63	51
110	246	65	52
115	255	67	54
120	263	69	56
125	272	71	58
130	280	73	59

**GENERAL NOTES:**

Designed according to AASHTO LRFD Bridge Design Specifications. See Bridge Layout for foundation type, size and length. See Common Foundation Details (FD) standard sheet for all foundation details and notes. See Shear Key (IGSK) standard sheet for all shear key details and notes, if applicable. Bent selected must be based on the average span length rounded up to the next 5 ft increment. These bent details may be used with standard SIG-62-32 only.

Cover dimensions are clear dimensions, unless noted otherwise. Reinforcing bar dimensions shown are out-to-out of bar.

**MATERIAL NOTES:**

Provide Class C concrete (f'c = 3,600 psi). Provide Class C (HPC) concrete if shown elsewhere in the plans. Provide Grade 60 reinforcing steel. Galvanize dowel bars D.

HL93 LOADING

		<b>Bridge Division Standard</b>	
<b>INTERIOR BENTS</b> <b>TYPE TX62</b> <b>PRESTR CONC I-GIRDERS</b> <b>32' ROADWAY</b>			
<b>BIG-62-32</b>			
FILE: IG-BIG623200-17.dgn	DN: TAR	CK: SDB	DW: JTR
©TxDOT August 2017	CONT	SECT	JOB
REVISIONS	COUNTY		SHEET NO.