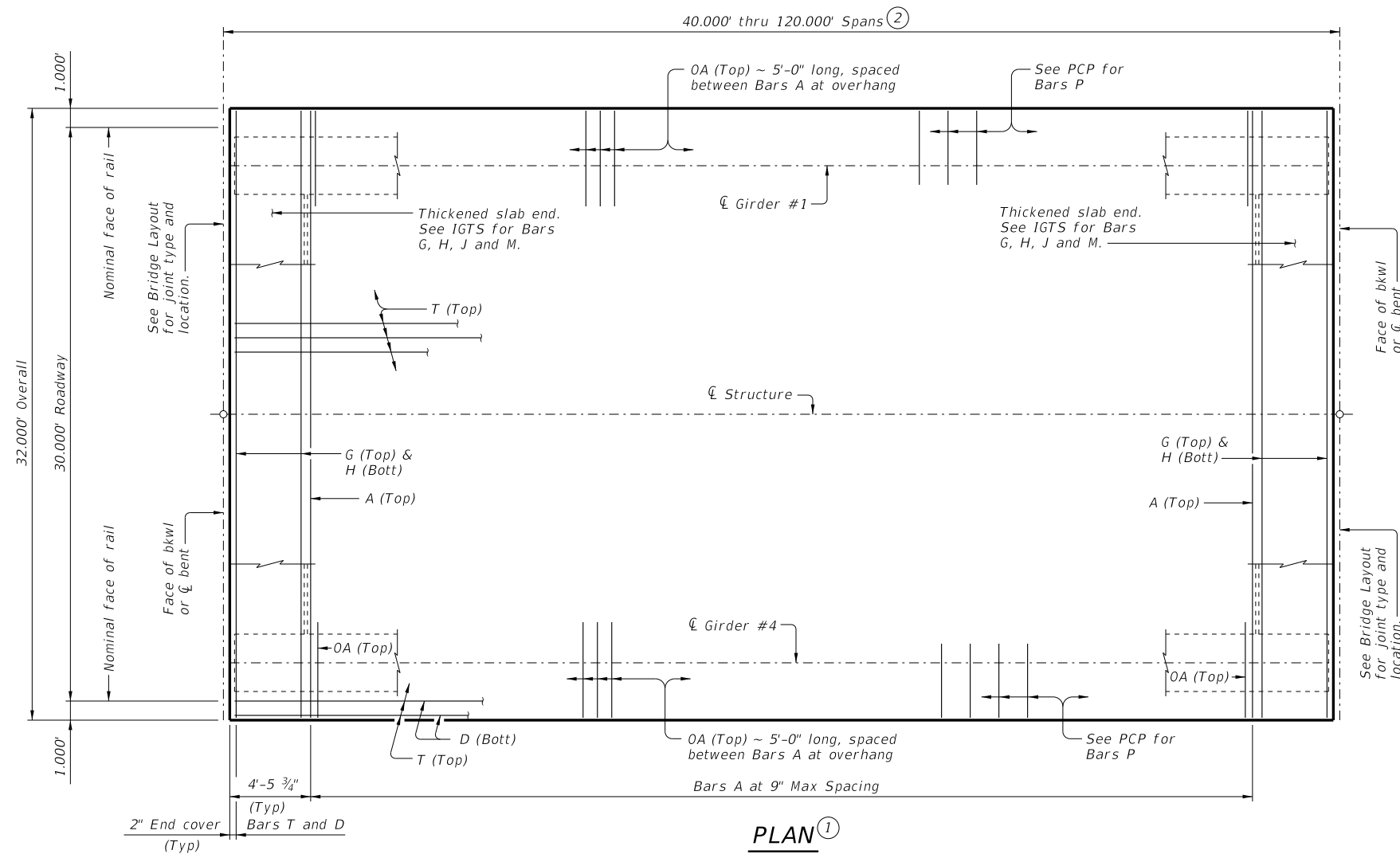
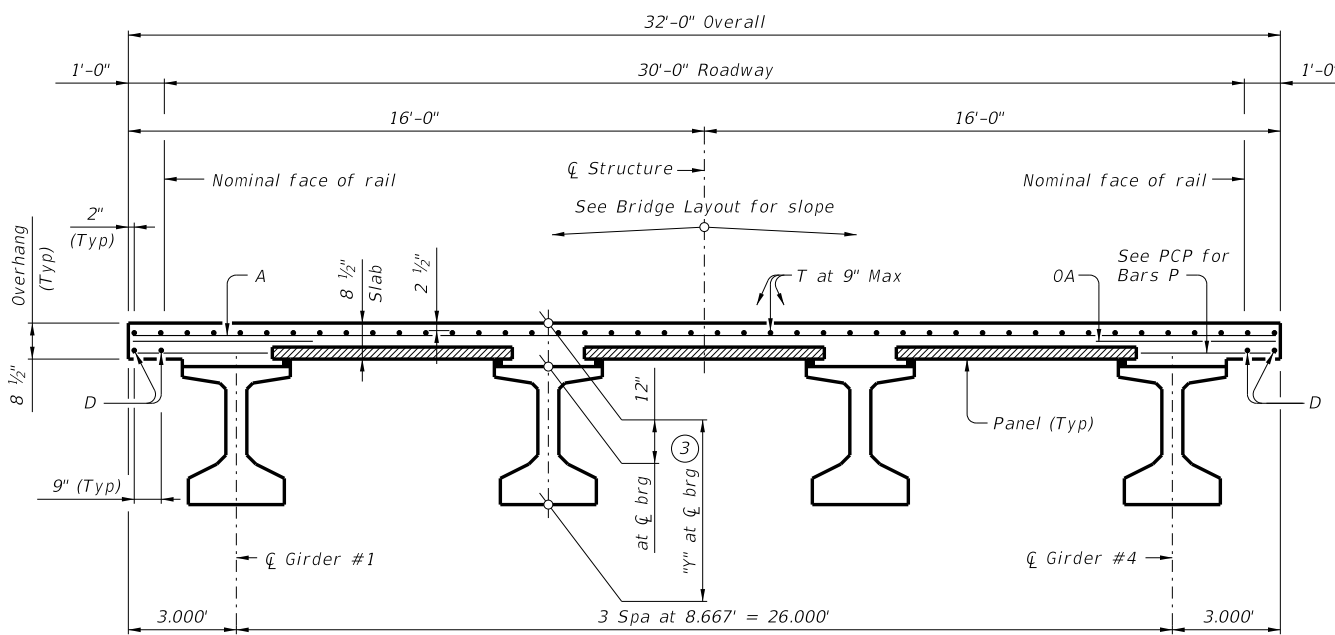


DISCLAIMER:
The use of this standard is governed by the "Texas Engineering Practice Act". No warranty of any kind is made by TxDOT for any purpose whatsoever. TxDOT assumes no responsibility for the conversion of this standard to other formats or for incorrect results or damages resulting from its use.

DATE:
FILE:



PLAN ①



TYPICAL TRANSVERSE SECTION
(Showing girder type Tx46)

TABLE OF SECTION DEPTHS	
GIRDER TYPE	"Y" AT $\bar{\bar{C}}$ BRG ③
	Ft./In
Tx28	3'-4"
Tx34	3'-10"
Tx40	4'-4"
Tx46	4'-10"
Tx54	5'-6"

BAR TABLE

BAR	SIZE
A	#4
D	#4
G	#4
H	#4
J	#4
M	#4
OA	#5
P	#4
T	#4

① If multi-span units (with slab continuous over interior bents) are indicated on the Bridge Layout, see standard IGCS for adjustment to slab reinforcement and quantities.

② Span lengths for prestressed concrete I-Girder type:
Type Tx28 for spans lengths 40.000' thru 70.000'.
Type Tx34 for spans lengths 40.000' thru 80.000'.
Type Tx40 for spans lengths 40.000' thru 95.000'.
Type Tx46 for spans lengths 40.000' thru 105.000'.
Type Tx54 for spans lengths 40.000' thru 120.000'.

③ "Y" value shown is based on theoretical girder camber, dead load deflection from an 8 1/2" concrete slab, a constant roadway grade, and using precast panels (PCP). The Contractor will adjust this value as necessary for any roadway vertical curve.

HL93 LOADING

SHEET 1 OF 2



PRESTRESSED CONCRETE I-GIRDER SPANS (TYPE Tx28 THRU Tx54) 30' ROADWAY

SIG-30

FILE: IG-SIG3000-23.dgn	DN: JMH	CK: NRN	DW: JTR	CK: TAR
©TxDOT August 2017	CONT	SECT	JOB	HIGHWAY
REVISIONS				
10-19: Increased "X" and "Y" Values.	DIST		COUNTY	SHEET NO.
01-23: Removed PCP() reference.				

TABLE OF DEAD LOAD DEFLECTIONS

TYPE T _x 28 GIRDERS			TYPE T _x 34 GIRDERS			TYPE T _x 40 GIRDERS			TYPE T _x 46 GIRDERS			TYPE T _x 54 GIRDERS		
SPAN LENGTH	"A"	"B"	SPAN LENGTH	"A"	"B"	SPAN LENGTH	"A"	"B"	SPAN LENGTH	"A"	"B"	SPAN LENGTH	"A"	"B"
Ft	Ft	Ft	Ft	Ft	Ft	Ft	Ft	Ft	Ft	Ft	Ft	Ft	Ft	Ft
40	0.010	0.014	40	0.006	0.008	40	0.004	0.005	40	0.003	0.004	40	0.001	0.002
45	0.016	0.022	45	0.009	0.013	45	0.006	0.009	45	0.004	0.006	45	0.003	0.004
50	0.025	0.035	50	0.015	0.021	50	0.010	0.014	50	0.006	0.009	50	0.004	0.006
55	0.037	0.052	55	0.022	0.031	55	0.014	0.020	55	0.010	0.014	55	0.006	0.009
60	0.053	0.074	60	0.031	0.044	60	0.021	0.029	60	0.014	0.020	60	0.009	0.013
65	0.073	0.103	65	0.044	0.062	65	0.028	0.040	65	0.019	0.027	65	0.013	0.018
70	0.100	0.140	70	0.060	0.084	70	0.039	0.055	70	0.026	0.037	70	0.018	0.025
			75	0.079	0.111	75	0.052	0.073	75	0.036	0.050	75	0.024	0.033
			80	0.103	0.145	80	0.068	0.095	80	0.046	0.065	80	0.031	0.043
						85	0.086	0.121	85	0.059	0.083	85	0.039	0.055
						90	0.109	0.153	90	0.075	0.105	90	0.049	0.069
						95	0.136	0.191	95	0.093	0.130	95	0.061	0.086
									100	0.115	0.161	100	0.076	0.106
									105	0.140	0.196	105	0.093	0.130
									110			110	0.112	0.157
									115			115	0.134	0.188
									120			120	0.159	0.223

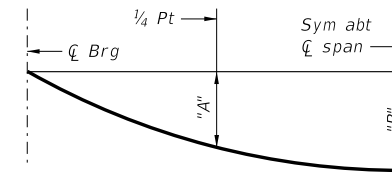


TABLE OF ESTIMATED QUANTITIES

SPAN LENGTH	REINF CONCRETE SLAB	Prestressed Concrete Girders			TOTAL REINF STEEL ⁵
		ABUT TO INT BT ⁴	INT BT TO INT BT ⁴	ABUT TO ABUT ⁴	
Ft	SF	LF	LF	LF	Lb
40	1,280	158.00	158.00	158.00	2,944
45	1,440	178.00	178.00	178.00	3,312
50	1,600	198.00	198.00	198.00	3,680
55	1,760	218.00	218.00	218.00	4,048
60	1,920	238.00	238.00	238.00	4,416
65	2,080	258.00	258.00	258.00	4,784
70	2,240	278.00	278.00	278.00	5,152
75	2,400	298.00	298.00	298.00	5,520
80	2,560	318.00	318.00	318.00	5,888
85	2,720	338.00	338.00	338.00	6,256
90	2,880	358.00	358.00	358.00	6,624
95	3,040	378.00	378.00	378.00	6,992
100	3,200	398.00	398.00	398.00	7,360
105	3,360	418.00	418.00	418.00	7,728
110	3,520	438.00	438.00	438.00	8,096
115	3,680	458.00	458.00	458.00	8,464
120	3,840	478.00	478.00	478.00	8,832

- Fabricator will adjust lengths for girder slopes as required.
- Reinforcing steel weight is calculated using an approximate factor of 2.3 lbs/SF.

MATERIAL NOTES:

GENERAL NOTES:

Design Specifications.
 Multi-span units, with slab continuous over interior bents, may be formed with the details shown on this sheet and the I-Girder Continuous Slab Detail (IGCS) standard.
 See I-Girder Thickened Slab End Details (IGTS) standard for details and quantity adjustments.
 See Prestressed Concrete Panels (PCP) standard and Prestressed Concrete Panel Fabrication Details (PCP-FAB) standard for panel details not shown.
 See I-Girder Miscellaneous Slab Details (IGMS) standard for miscellaneous details.
 See applicable rail details for rail anchorage in slab.
 See Permanent Metal Deck Forms (PMDF) standard for details and quantity adjustments if this option is used.
 This standard does not support the use of transition bents.

Cover dimensions are clear dimensions, unless noted otherwise.

		Bridge Division Standard	
PRESTRESSED CONCRETE I-GIRDER SPANS (TYPE T_x28 THRU T_x54) 30' ROADWAY			
SIG-30			
FILE:	DN: JMH	CK: NRM	DW: JTR
CTxDOT	CONT	SECT	HIGHWAY
REVISIONS			
DIST	COUNTY	SHEET NO.	