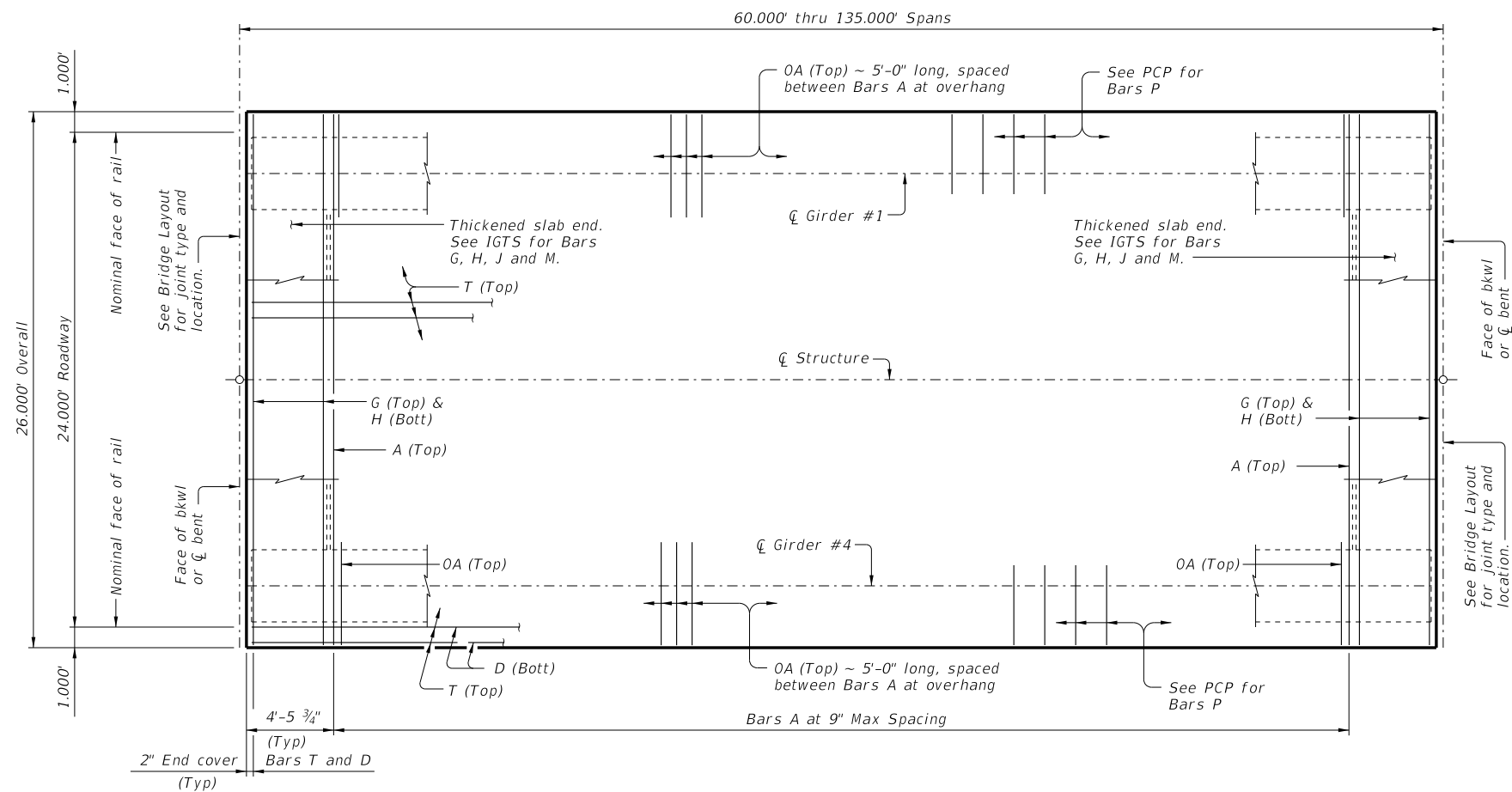


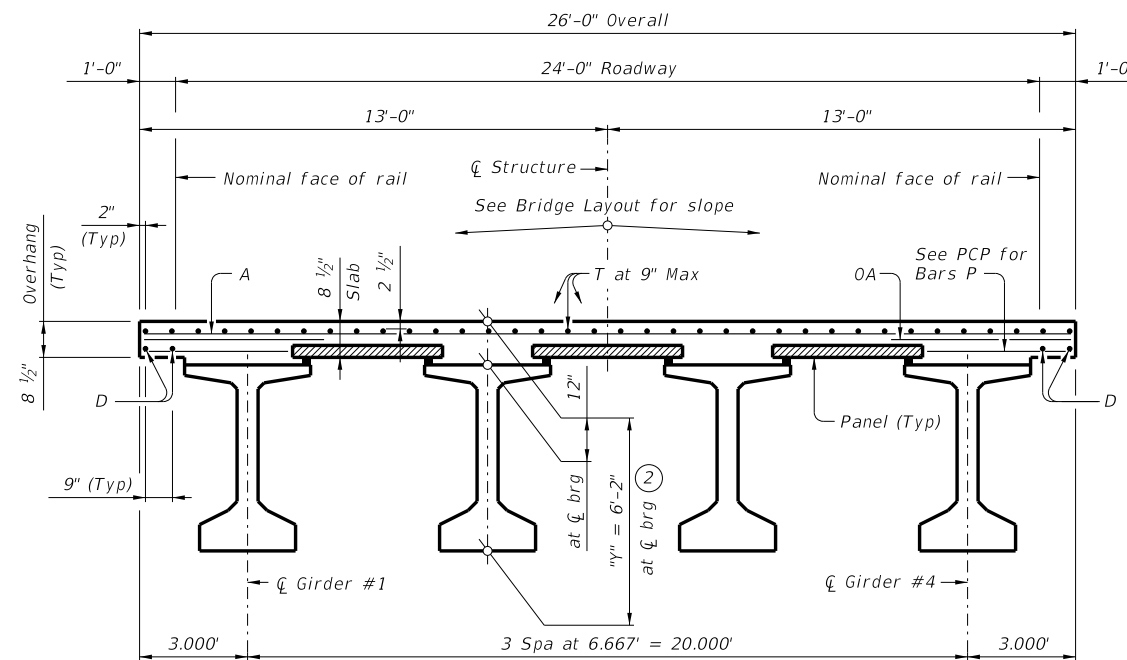
DISCLAIMER: This standard is governed by the "Texas Engineering Practice Act". No warranty of any kind is made by TxDOT for any purpose whatsoever. TxDOT assumes no responsibility for the conversion of this standard to other formats or for incorrect results or damages resulting from its use.

DATE:
FILE:



PLAN ①

- ① If multi-span units (with slab continuous over interior bents) are indicated on the Bridge Layout, see standard IGCS for adjustment to slab reinforcement and quantities.
- ② "Y" value shown is based on theoretical girder camber, dead load deflection from an 8 1/2" concrete slab, a constant roadway grade, and using precast panels (PCP). The Contractor will adjust this value as necessary for any roadway vertical curve.



TYPICAL TRANSVERSE SECTION

BAR TABLE

BAR	SIZE
A	#4
D	#4
G	#4
H	#4
J	#4
M	#4
OA	#5
P	#4
T	#4

HL93 LOADING

SHEET 1 OF 2



**PRESTRESSED CONCRETE
I-GIRDER SPANS
(TYPE T x 62)
24' ROADWAY**

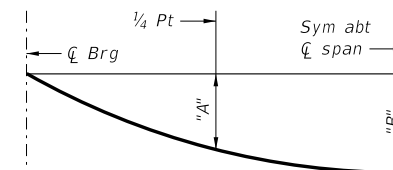
SIG-62-24

FILE: IG-SIG622400-23.dgn	DN: JMH	CK: GC	DW: JTR	CK: TAR
©TxDOT August 2017	CONT	SECT	JOB	HIGHWAY
REVISIONS				
10-19: Increased "X" and "Y" Values.	DIST	COUNTY	SHEET NO.	
01-23: Removed PCP(O) reference.				

DISCLAIMER: This standard is governed by the "Texas Engineering Practice Act". No warranty of any kind is made by TxDOT for any purpose whatsoever. TxDOT assumes no responsibility for the conversion of this standard to other formats or for incorrect results or damages resulting from its use.

DATE: FILE:

TABLE OF DEAD LOAD DEFLECTIONS		
TYPE Tx62 GIRDERS		
SPAN LENGTH	"A"	"B"
Ft	Ft	Ft
60	0.004	0.006
65	0.006	0.009
70	0.009	0.012
75	0.011	0.016
80	0.015	0.021
85	0.019	0.027
90	0.024	0.034
95	0.031	0.043
100	0.038	0.053
105	0.046	0.065
110	0.056	0.078
115	0.067	0.094
120	0.079	0.111
125	0.093	0.131
130	0.110	0.154
135	0.128	0.179



DEAD LOAD DEFLECTION DIAGRAM

Calculated deflections shown are due to the concrete slab on interior girders only ($E_c = 5000$ ksi). Adjust values as required for exterior girders and if optional slab forming is used. These values may require field verification.

TABLE OF ESTIMATED QUANTITIES					
SPAN LENGTH	REINF CONCRETE SLAB	Prestressed Concrete Girders			TOTAL REINF STEEL ⁽⁴⁾
		ABUT TO INT BT ⁽³⁾	INT BT TO INT BT ⁽³⁾	ABUT TO ABUT ⁽³⁾	
Ft	SF	LF	LF	LF	Lb
60	1,560	238.00	238.00	238.00	3,588
65	1,690	258.00	258.00	258.00	3,887
70	1,820	278.00	278.00	278.00	4,186
75	1,950	298.00	298.00	298.00	4,485
80	2,080	318.00	318.00	318.00	4,784
85	2,210	338.00	338.00	338.00	5,083
90	2,340	358.00	358.00	358.00	5,382
95	2,470	378.00	378.00	378.00	5,681
100	2,600	398.00	398.00	398.00	5,980
105	2,730	418.00	418.00	418.00	6,279
110	2,860	438.00	438.00	438.00	6,578
115	2,990	458.00	458.00	458.00	6,877
120	3,120	478.00	478.00	478.00	7,176
125	3,250	498.00	498.00	498.00	7,475
130	3,380	518.00	518.00	518.00	7,774
135	3,510	538.00	538.00	538.00	8,073

③ Fabricator will adjust lengths for girder slopes as required.

④ Reinforcing steel weight is calculated using an approximate factor of 2.3 lbs/SF.

MATERIAL NOTES:

Provide Class S concrete ($f'_c = 4,000$ psi).
 Provide Class S (HPC) concrete if shown elsewhere in the plans.
 Provide Grade 60 reinforcing steel.
 Provide bar laps, where required, as follows:
 Uncoated ~ #4 = 1'-7"
 Epoxy coated ~ #4 = 2'-5"
 Deformed welded wire reinforcement (WWR) (ASTM A1064) of equal size and spacing may be substituted for Bars A, D, OA, P or T unless noted otherwise.

GENERAL NOTES:

Designed according to AASHTO LRFD Bridge Design Specifications.
 Multi-span units, with slab continuous over interior bents, may be formed with the details shown on this sheet and the I-Girder Continuous Slab Detail (IGCS) standard.
 See I-Girder Thickened Slab End Details (IGTS) standard for details and quantity adjustments.
 See Prestressed Concrete Panels (PCP) standard and Prestressed Concrete Panel Fabrication Details (PCP-FAB) standard for panel details not shown.
 See I-Girder Miscellaneous Slab Details (IGMS) standard for miscellaneous details.
 See applicable rail details for rail anchorage in slab.
 See Permanent Metal Deck Forms (PMDF) standard for details and quantity adjustments if this option is used.
 This standard does not support the use of transition bents.

Cover dimensions are clear dimensions, unless noted otherwise.

HL93 LOADING

SHEET 2 OF 2

 Texas Department of Transportation	 Bridge Division Standard
PRESTRESSED CONCRETE I-GIRDER SPANS (TYPE Tx62) 24' ROADWAY	
SIG-62-24	
FILE: IG-SIG622400-23.dgn	DN: JMH CK: GC DW: JTR CK: TAR
©TxDOT August 2017	CONT SECT JOB HIGHWAY
REVISIONS	
10-19: Increased "X" and "Y" Values. 01-23: Removed PCP(O) reference.	DIST COUNTY SHEET NO.