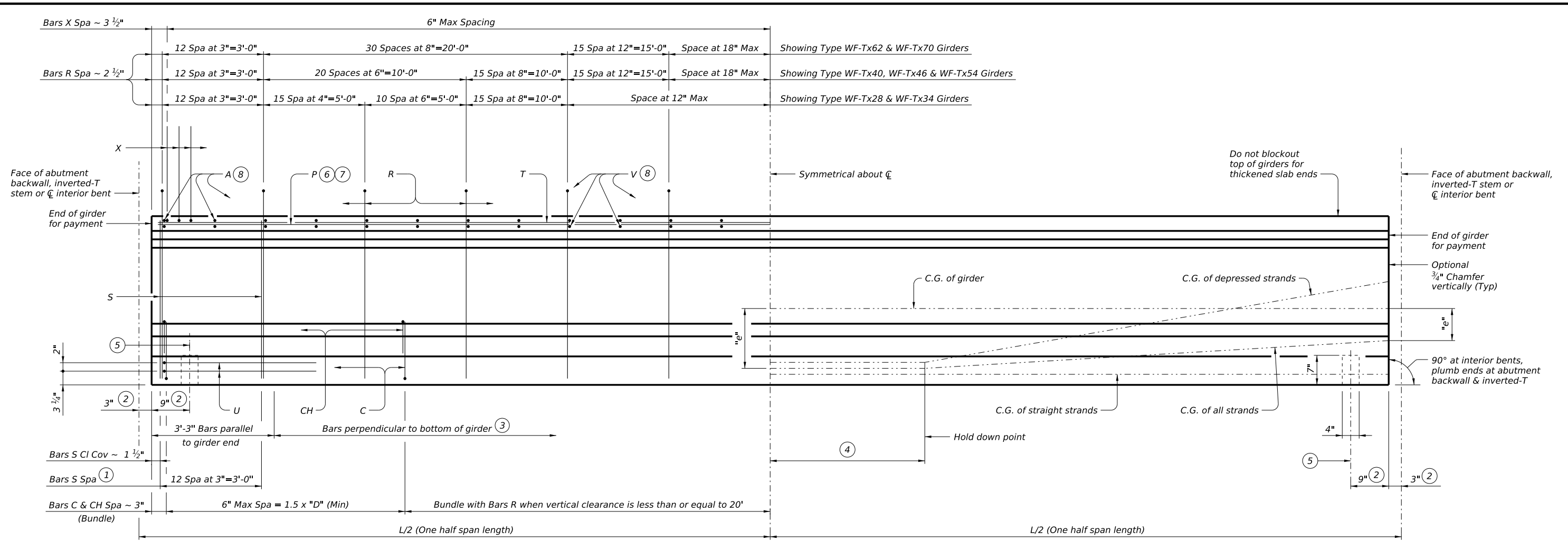


DISCLAIMER: This standard is governed by the "Texas Engineering Practice Act". No warranty of any kind is made by TxDOT for any purpose whatsoever. The use of this standard is for the conversion of this standard to other formats or for incorrect results or damages resulting from its use.



**GIRDER ELEVATION**

Curb not shown, see applicable Section and Curb Relief Joint Detail for Reinforcing

- ① Bundle with Bars R.
- ② Measured along C girder at interior bents; perpendicular to abutment backwall or inverted-T stem.
- ③ The average of the top and bottom spacing of Bars R cannot exceed the required spacing.
- ④ L/20, but not less than 5'-0" (-0,+2').
- ⑤ 4" x 1 1/2" Vertical slotted hole at doweled girder end [labeled (D) on Bridge Layout]. Required for outside girder only or as shown on substructure details. Anchorage holes may be tapered (4 3/4" x 1 5/8") at base. If holes are formed with sheet metal, forms may be left in place.
- ⑥ Bars P (#6) required in WF-Tx62 and WF-Tx70 girders. At the Fabricator's option, bars larger than #6 may be used.
- ⑦ Bars P (#6) are only required in WF-Tx28, WF-Tx34, WF-Tx40, WF-Tx46, and WF-Tx54 girders when "e" at girder ends exceeds 0.25 x "D". At the Fabricator's option bars larger than #6 may be used.
- ⑧ Space Bars A and Bars V at 12" Max. Tie to Bars R as necessary.

- ⑨ Bars may be cut or bent at skewed end as required.
- ⑩ Increase as necessary for bars at skewed end.
- ⑪ No portion of bar less than 15 ft.
- ⑫ For Welded Wire Reinforcement (WWR) option, area of Bars R may be reduced in proportion to the increase in reinforcement yield strength over 60 ksi. Yield strength of WWR is limited to 75 ksi.

**MATERIAL NOTES:**  
 Provide Grade 60 reinforcing steel.  
 Provide Class H concrete.  
 An equal area of deformed Welded Wire Reinforcement (WWR) (ASTM A1064) may be substituted for Bars A, C, R or T unless otherwise noted.

**GENERAL NOTES:**  
 Designed in accordance with AASHTO LRFD Bridge Design Specifications.  
 It is permissible for bars or strands to come into contact with material used in forming anchor holes.  
 When vertical clearance of the span is less than or equal to 20 feet, provide additional Bars C and CH in every girder of that span.  
 Screenshot rails must be supported at the centerline of girder.  
 The use of Wide Flange I-Girders is restricted to tangent edge of decks and is not permitted to be chorded on curve deck edges.

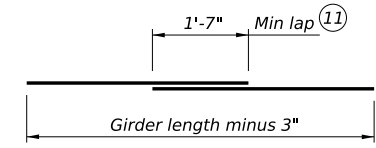
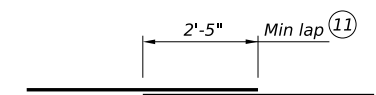
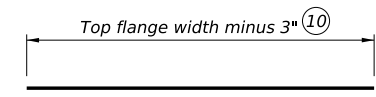
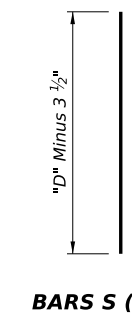
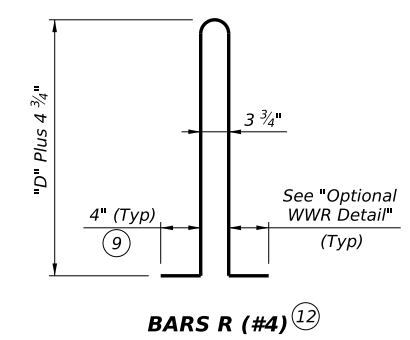
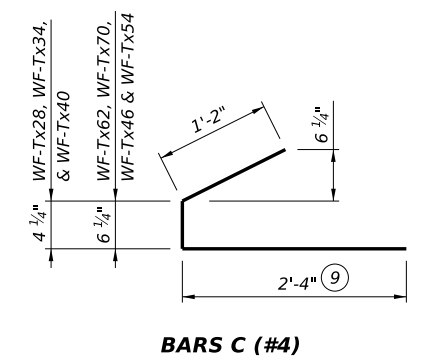
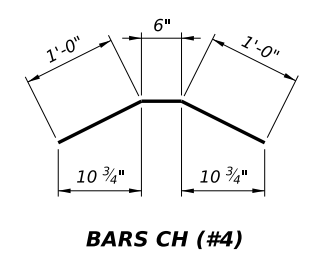
Cover dimensions are clear dimensions, unless noted otherwise. Reinforcing bar dimensions shown are out-to-out of bar.

HL93 LOADING SHEET 1 OF 3



**PRESTR CONC WIDE FLANGE I-GIRDER DETAILS**

		<b>Bridge Division Standard</b>	
<b>WF-IGD</b>			
FILE: IG-WF-IGD-24.dgn	DN: TxDOT	CK: TAR	DW: TxDOT
©TxDOT August 2024	CONT	SECT	JOB
REVISIONS			HIGHWAY
	DIST	COUNTY	SHEET NO.



DATE: FILE:



