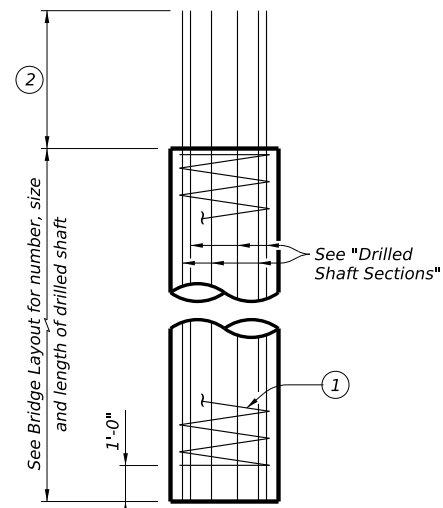
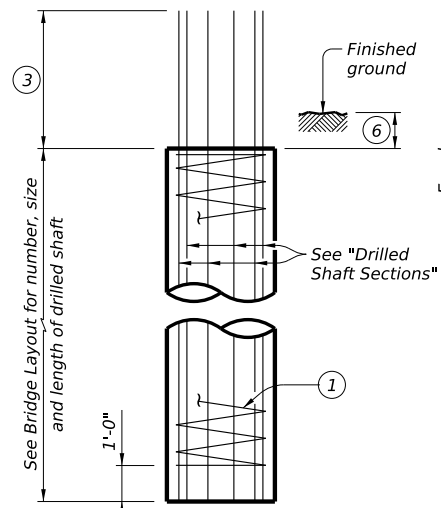


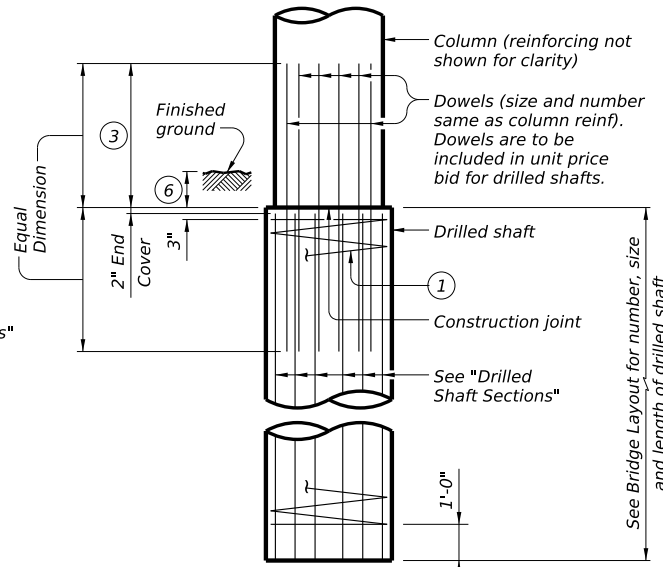
DISCLAIMER: The use of this standard is governed by the "Texas Engineering Practice Act". No warranty of any kind is made by TxDOT for any purpose whatsoever. TxDOT assumes no responsibility for the conversion of this standard to other formats or for incorrect results or damages resulting from its use.



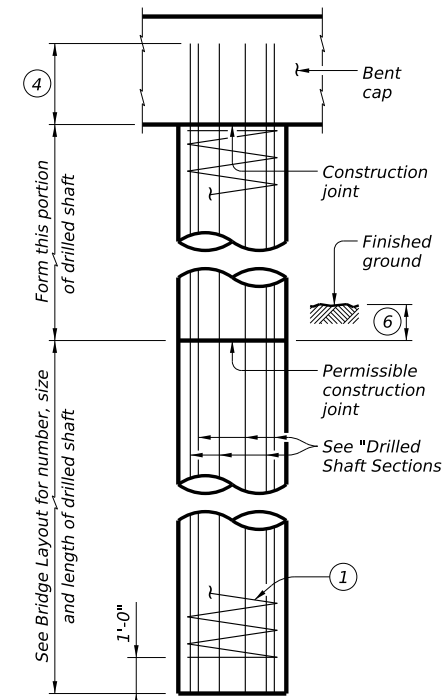
ABUTMENTS, WINGWALLS AND MULTI-DRILLED SHAFT FOOTINGS



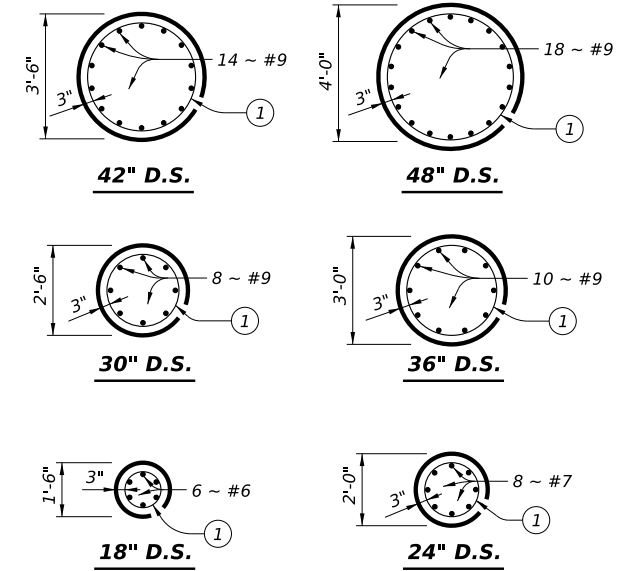
INTERIOR BENTS DRILLED SHAFT DIA EQUAL TO COLUMN DIA



INTERIOR BENTS DRILLED SHAFT DIA GREATER THAN COLUMN DIA



OPTIONAL INTERIOR BENT DRILLED SHAFT DETAIL

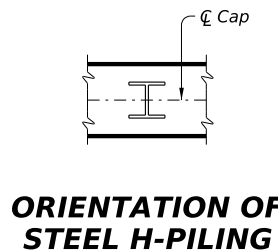


DRILLED SHAFT SECTIONS

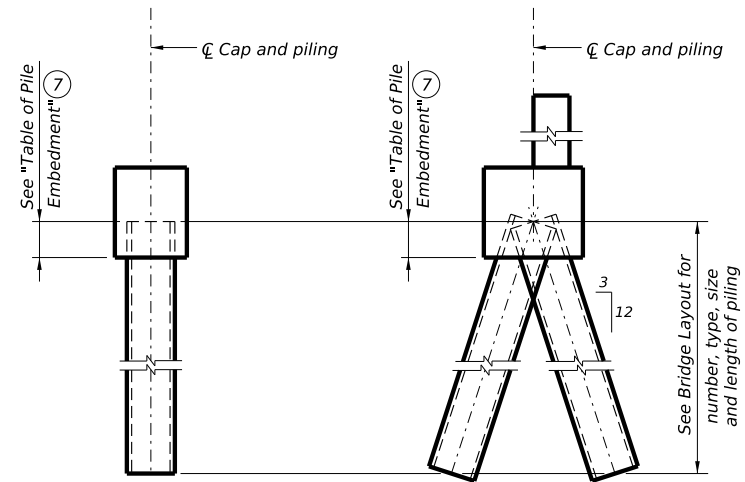
DRILLED SHAFT DETAILS

TABLE OF PILE EMBEDMENT	
Pile Type	Embedment Depth (Ft)
16" Sq Concrete 18" Sq Concrete HP14 Steel HP16 Steel	1'-0"
20" Sq Concrete 24" Sq Concrete HP18 Steel	1'-6"

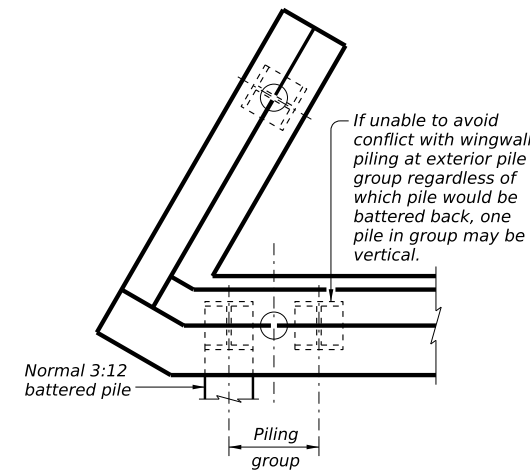
See Prestressed Concrete Piling (CP) standard for additional details on concrete pile embedment.



ORIENTATION OF STEEL H-PILING



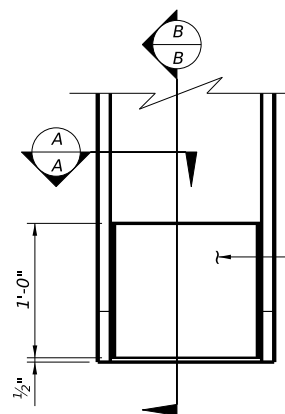
PILING DETAILS
(Concrete or steel H)



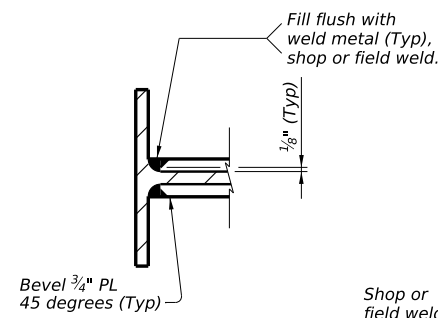
DETAIL A

(Showing plan view of a 30° skewed abutment)

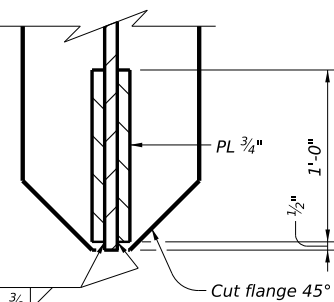
- ① #3 spiral at 6" pitch (one and a half flat turns top and bottom).
- ② Min extension into supported element:
#6 Bars = 1'-11"
#7 Bars = 2'-0"
#9 Bars = 2'-3"
- ③ Min lap with column reinf:
#7 Bars = 2'-11"
#9 Bars = 3'-9"
#11 Bars = 4'-8"
- ④ Min extension into supported element:
#6 Bars = 1'-11"
#7 Bars = 2'-3"
#9 Bars = 2'-9"
- ⑤ Drilled shafts may extend to the bottom of bent caps for "H" heights of 6 ft and less (as shown on the Bridge Layout), if approved. This option can only be used when the drilled shaft diameter equals the column diameter. Obtain approval of the forming method above the ground line prior to construction. No adjustments in payment will be made if this option is used.
- ⑥ 1'-0" Min, unless shown otherwise on plans.
- ⑦ Or as shown on plans.



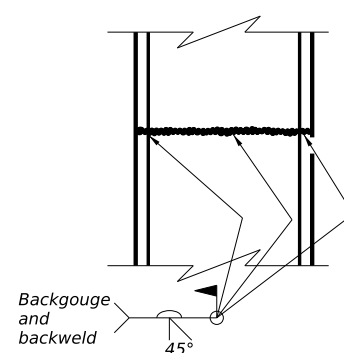
ELEVATION



SECTION A-A

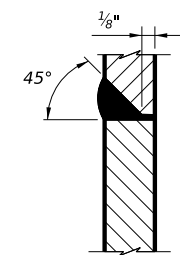


SECTION B-B



STEEL H-PILE SPLICE DETAIL

Use when required.



SECTION THRU FLANGE OR WEB

SHEET 1 OF 2



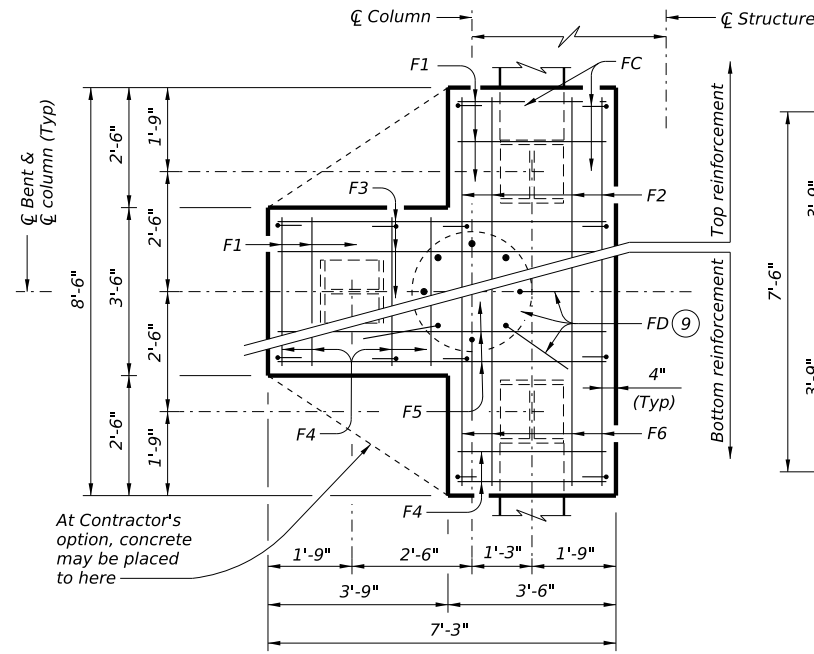
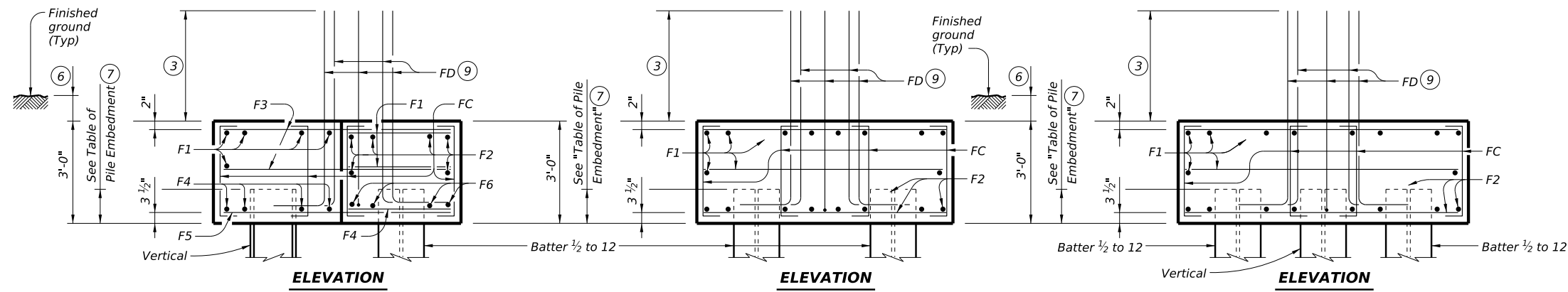
COMMON FOUNDATION DETAILS

FD

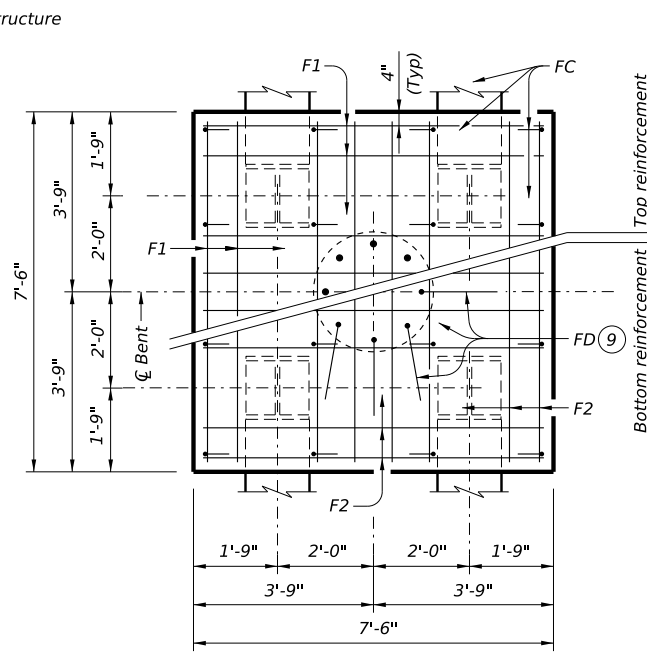
FILE: MS-FD-24.dgn	DN: TxDOT	CK: TxDOT	DW: TxDOT	CK: TxDOT
©TxDOT October 2024	CONT	SECT	JOB	HIGHWAY
REVISIONS				
DIST	COUNTY			SHEET NO.

DATE: FILE:

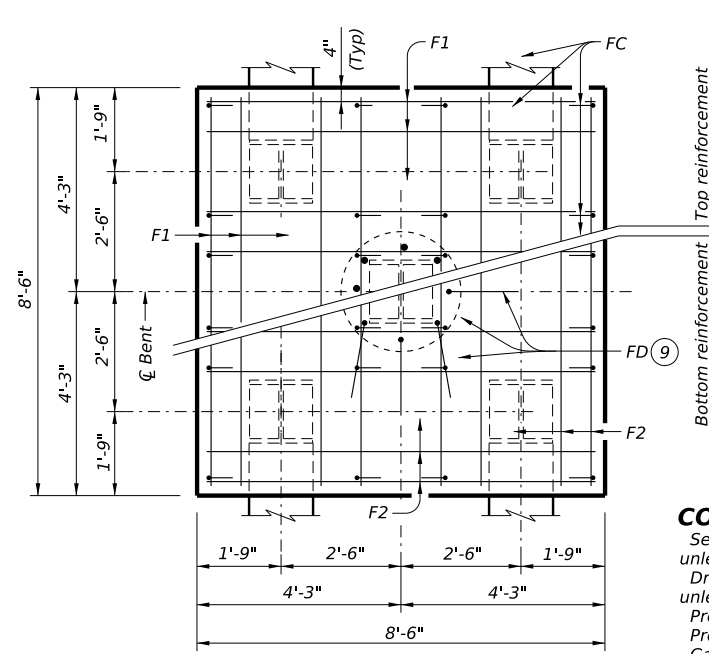
DISCLAIMER: The use of this standard is governed by the "Texas Engineering Practice Act". No warranty of any kind is made by TxDOT for any purpose whatsoever. TxDOT assumes no responsibility for the conversion of this standard to other formats or for incorrect results or damages resulting from its use.



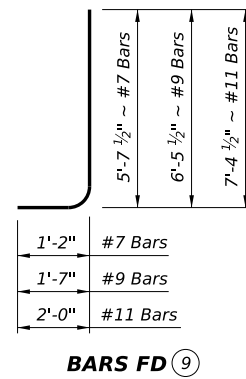
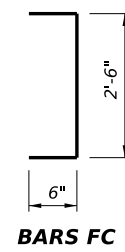
THREE PILE FOOTING (8)
For 36" Dia and smaller columns.



FOUR PILE FOOTING (8)
For 42" Dia and smaller columns.



FIVE PILE FOOTING (8)
For 42" Dia and smaller columns.



- (3) Min lap with column reinforcing:
#7 Bars = 2'-11"
#9 Bars = 3'-9"
#11 Bars = 4'-8"
- (6) 1'-0" Min, unless shown otherwise on plans.
- (7) Or as shown on plans.
- (8) See Bridge Layout for type, size and length of piling.
- (9) Number and size of FD bars must match column reinforcing. Tie FD bars to the top of the bottom reinforcing mat.
- (10) Adjust FD quantity, size and weight as needed to match column reinforcing.

TABLE OF FOOTING QUANTITIES FOR 30" COLUMNS

ONE 3 PILE FOOTING					
Bar	No.	Size	Length	Weight	
F1	11	#4	3'- 2"	23	
F2	6	#4	8'- 2"	33	
F3	6	#4	6'- 11"	28	
F4	8	#9	3'- 2"	86	
F5	4	#9	6'- 11"	94	
F6	4	#9	8'- 2"	111	
FC	12	#4	3'- 6"	28	
FD (10)	8	#9	8'- 1"	220	
Reinforcing Steel				Lb	623
Class "C" Concrete				CY	4.8
ONE 4 PILE FOOTING					
Bar	No.	Size	Length	Weight	
F1	20	#4	7'- 2"	96	
F2	16	#8	7'- 2"	306	
FC	16	#4	3'- 6"	37	
FD (10)	8	#9	8'- 1"	220	
Reinforcing Steel				Lb	659
Class "C" Concrete				CY	6.3
ONE 5 PILE FOOTING					
Bar	No.	Size	Length	Weight	
F1	20	#4	8'- 2"	109	
F2	16	#9	8'- 2"	444	
FC	24	#4	3'- 6"	56	
FD (10)	8	#9	8'- 1"	220	
Reinforcing Steel				Lb	829
Class "C" Concrete				CY	8.0

CONSTRUCTION NOTES:

See Bridge Layout for foundation type required. Use these foundation details unless shown otherwise.
 Drive piling under abutment wingwalls to a minimum resistance of 10 Tons/Pile unless shown otherwise.
 Provide Class C Concrete ($f'_c = 3,600$ psi), unless shown otherwise.
 Provide Grade 60 reinforcing steel.
 Galvanize reinforcing if shown elsewhere in the plans.
 Provide bar laps for drilled shaft reinforcing, where required, as follows:
 Uncoated or galvanized (#6) ~ 2'-6"
 Uncoated or galvanized (#7) ~ 2'-11"
 Uncoated or galvanized (#9) ~ 3'-9"

GENERAL NOTES:

Designed according to AASHTO LRFD Bridge Design Specifications.

Cover dimensions are clear dimensions, unless noted otherwise.
 Reinforcing bar dimensions shown are out-to-out of bar.

DESIGNER NOTES:

Do not use the drilled shaft details shown on this standard for retaining wall, noise wall, barrier, or sign foundations without structural evaluation.
 Do not use the footings shown on this standard in direct contact with salt water or exposed to salt water spray.
 Maximum allowable pile loads for the footings shown are:
 72 Tons/Pile with 24" Dia Columns
 80 Tons/Pile with 30" Dia Columns
 100 Tons/Pile with 36" Dia Columns
 120 Tons/Pile with 42" Dia Columns



COMMON FOUNDATION DETAILS

FD

FILE: MS-FD-24.dgn	DN: TxDOT	CK: TxDOT	DW: TxDOT	CK: TxDOT
©TxDOT October 2024	CONT	SECT	JOB	HIGHWAY
REVISIONS				
DIST	COUNTY			SHEET NO.

DATE:
FILE: