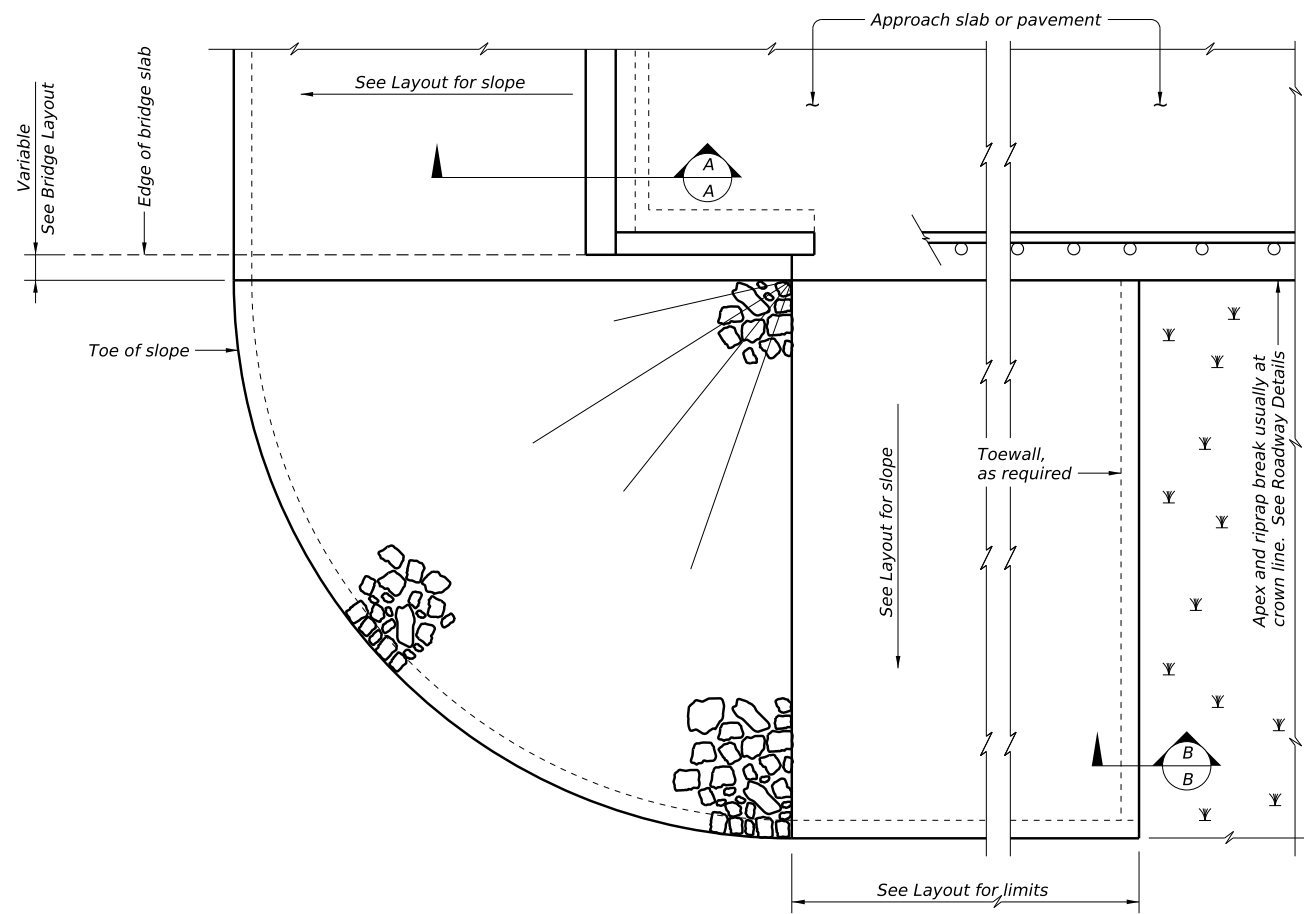
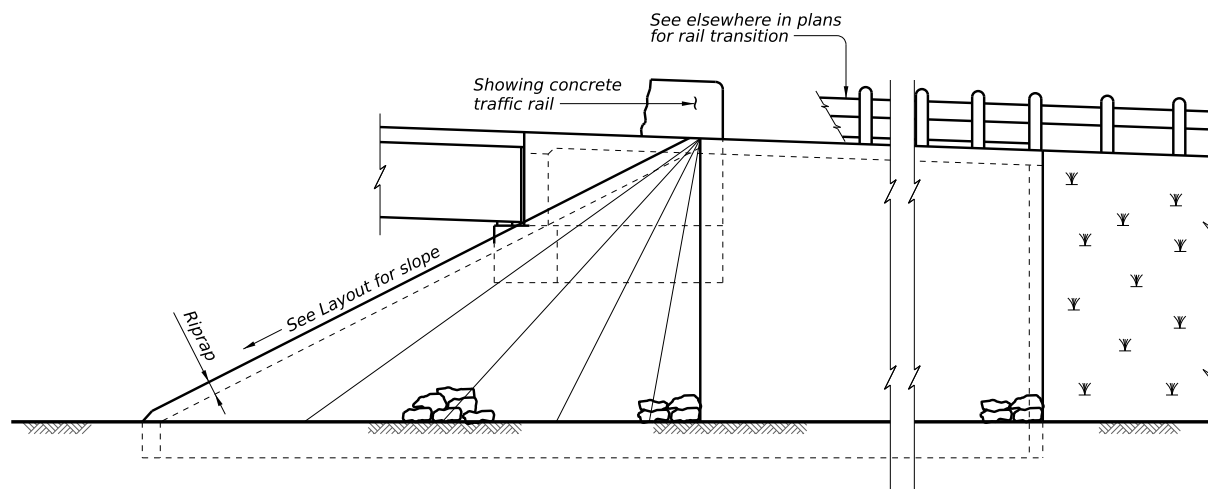


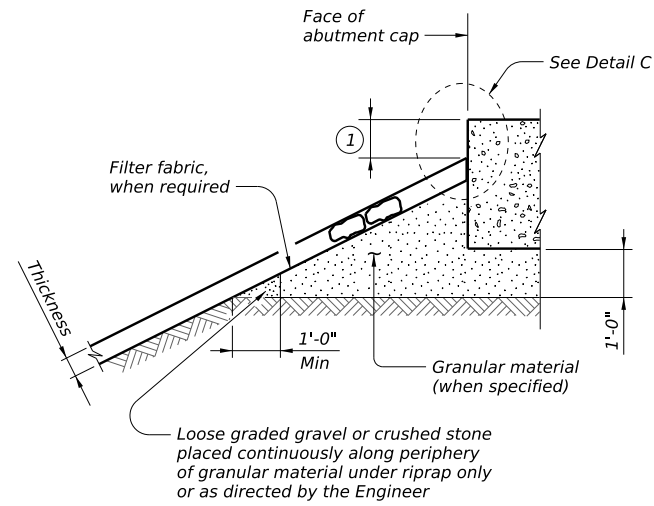
DISCLAIMER: The use of this standard is governed by the "Texas Engineering Practice Act." No warranty of any kind is made by TxDOT for any purpose whatsoever. TxDOT assumes no responsibility for the conversion of this standard to other formats or for incorrect results or damages resulting from its use.



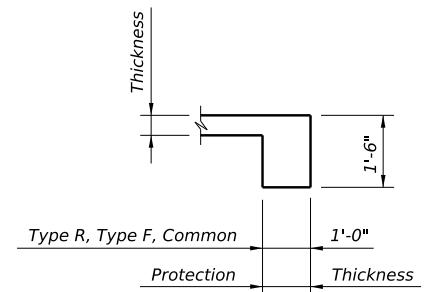
PLAN



ELEVATION



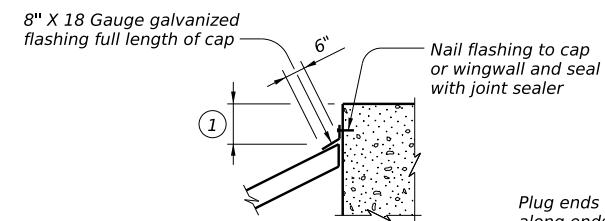
SECTION A-A AT CAP



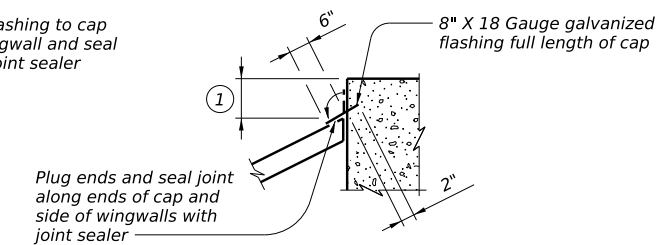
SECTION B-B

Provide toewall when shoulder drain is located adjacent to limits of stone riprap. Omit toewall when thickness of protection riprap is greater than 18".

① Top of cap to top of riprap dimension varies as directed by the Engineer. Provide 9" Min for beam/slab type bridges and 1'-6" for slab span, box beam, or slab beam bridges.



CAP OPTION A



CAP OPTION B

DETAIL C

GENERAL NOTES:
 Refer to Item 432, "Riprap" for stone size and gradation, and construction details. See Layout for limits and thickness of riprap specified.
 See elsewhere in plans for locations and details of shoulder drains.

SHEET 1 OF 2



STONE RIPRAP

SRR

FILE: MS-SRR-19.dgn	DN: TxDOT	CK: TxDOT	DW: TxDOT	CK: TxDOT
©TxDOT October 2024	CONT	SECT	JOB	HIGHWAY
REVISIONS				
	DIST	COUNTY		SHEET NO.

DATE:
FILE:

DISCLAIMER: This standard is governed by the "Texas Engineering Practice Act." No warranty of any kind is made by TxDOT for any purpose whatsoever. The use of this standard for the conversion of this standard to other formats or for incorrect results or damages resulting from its use. TxDOT assumes no responsibility for the conversion of this standard to other formats or for incorrect results or damages resulting from its use.

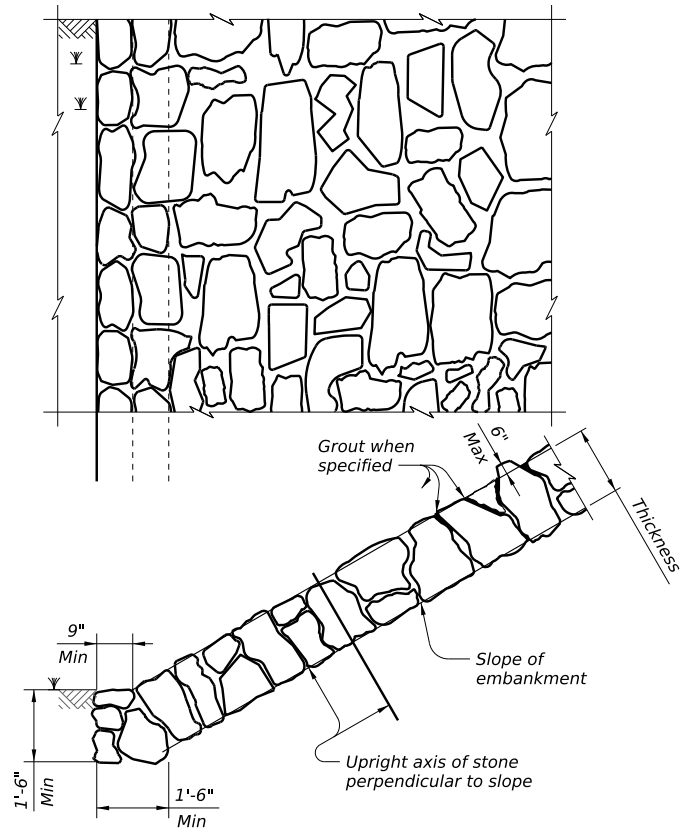


FIGURE 1 ~ TYPE R STONE RIPRAP

Dry or grouted

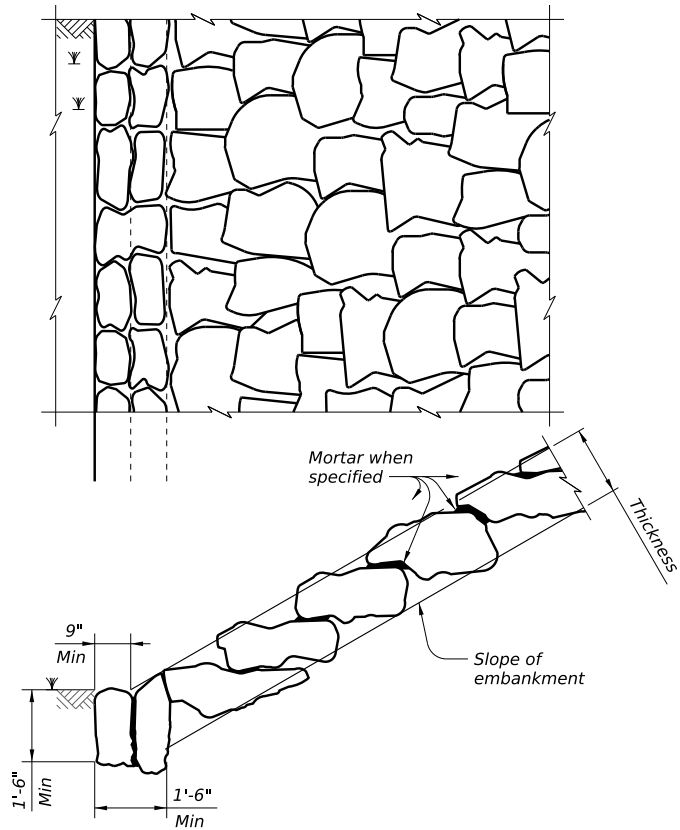


FIGURE 2 ~ TYPE F STONE RIPRAP

Dry or mortared

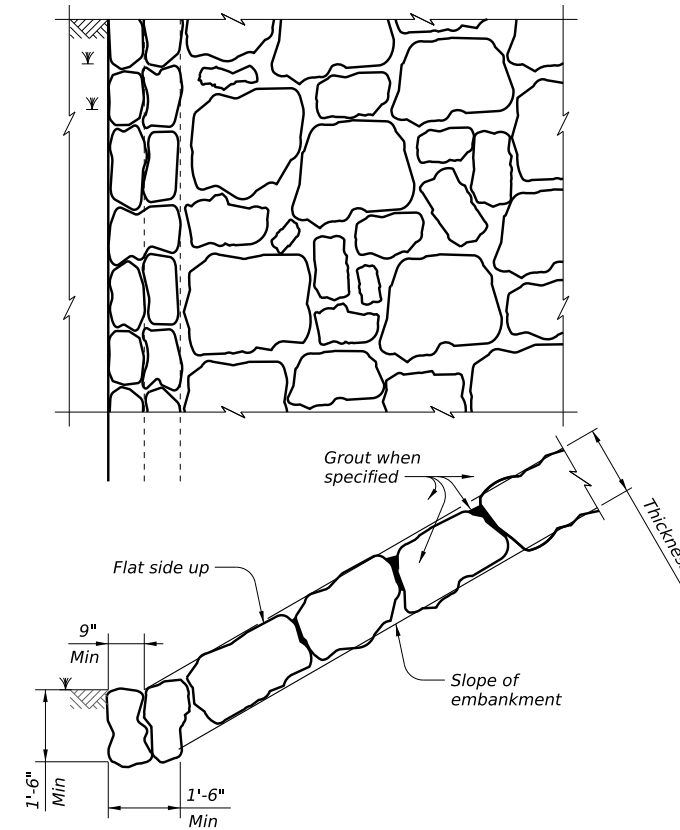
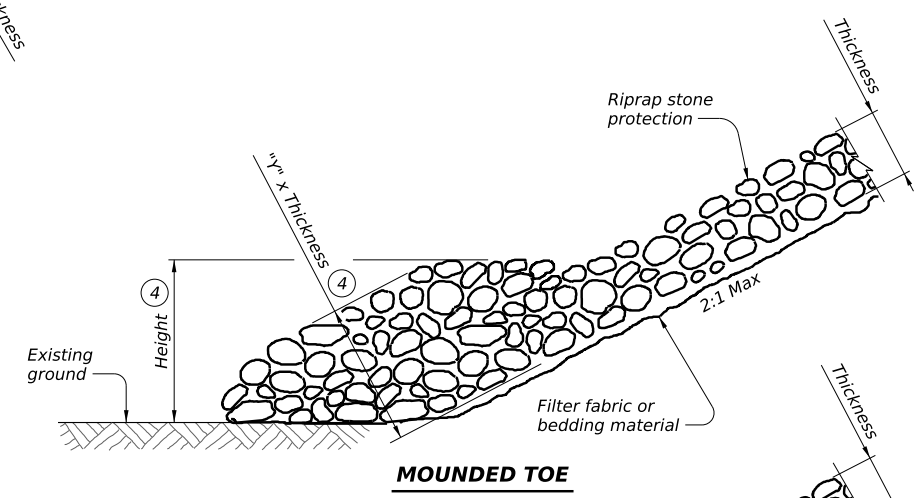


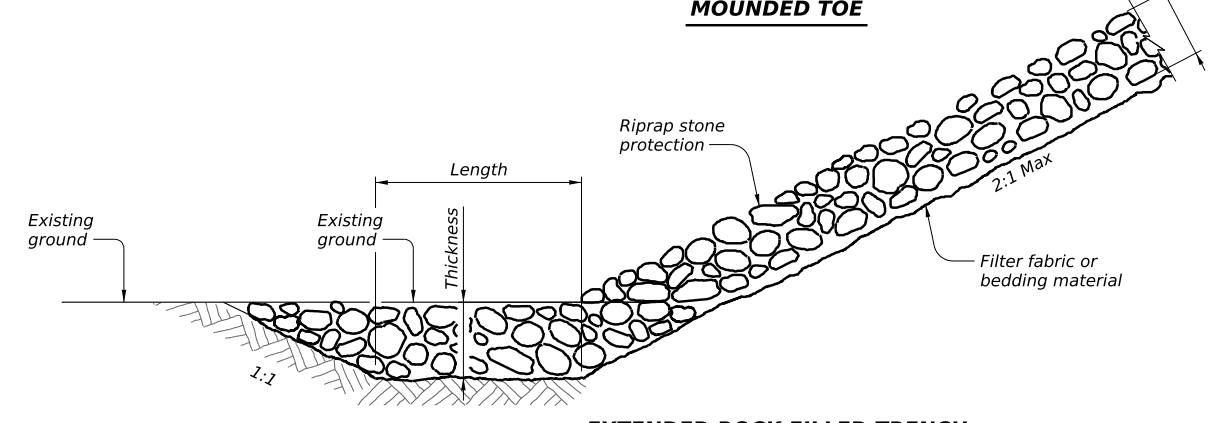
FIGURE 3 ~ TYPE F STONE RIPRAP

Grouted

- ② Provide bedding material instead of filter fabric if shown elsewhere in plans. See Layout for thickness of bedding material.
- ③ Minimum toe depth is 2 times the riprap thickness (typical) or as shown elsewhere in the plans.
- ④ "Y" and Height need to be defined. See layout or detail sheet for values if this option is used.
- ⑤ List Stone Protection as size (XX inch) and thickness (YY inch) on the layout.
Example: Riprap (Stone Protection) XX inch, Thickness = YY inch.



MOUNDED TOE



EXTENDED ROCK FILLED TRENCH

PROTECTION STONE RIPRAP TOE OPTIONS ⑤

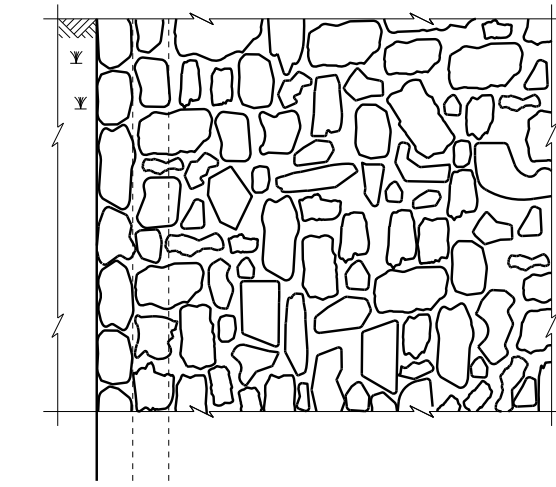


FIGURE 4 ~ COMMON STONE RIPRAP

Dry or grouted

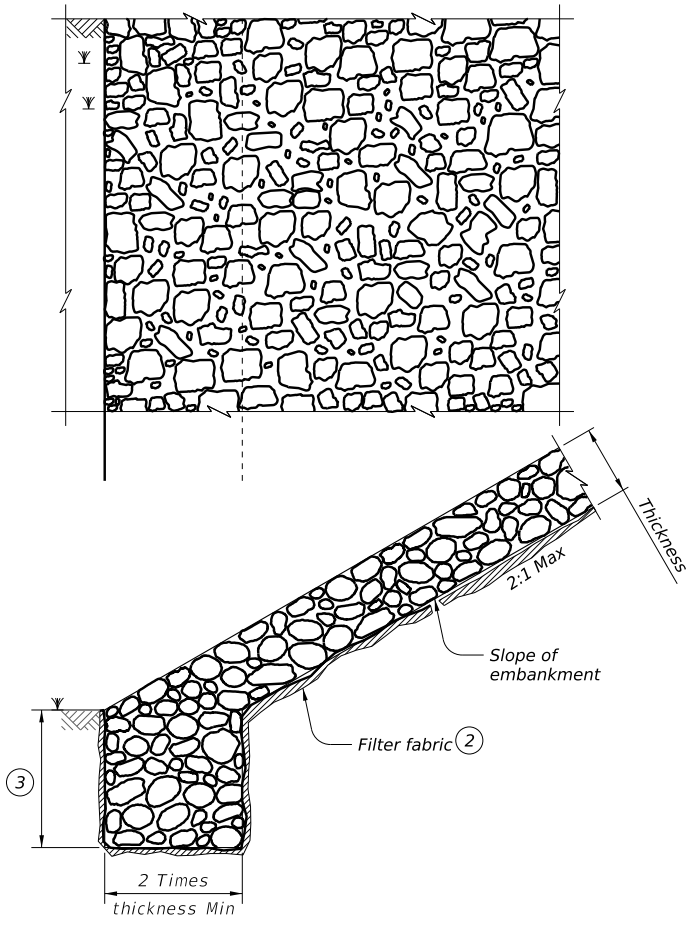


FIGURE 5 ~ PROTECTION STONE RIPRAP ⑤

SHEET 2 OF 2

Texas Department of Transportation Bridge Division Standard

STONE RIPRAP

SRR

FILE: MS-SRR-19.dgn	DN: TxDOT	CK: TxDOT	DW: TxDOT	CK: TxDOT
©TxDOT October 2024	CONT	SECT	JOB	HIGHWAY
REVISIONS				
	DIST	COUNTY	SHEET NO.	

DATE:
FILE: