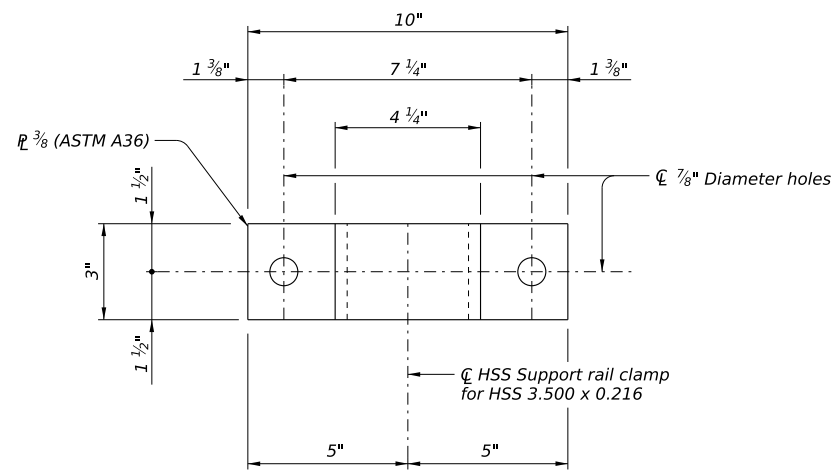
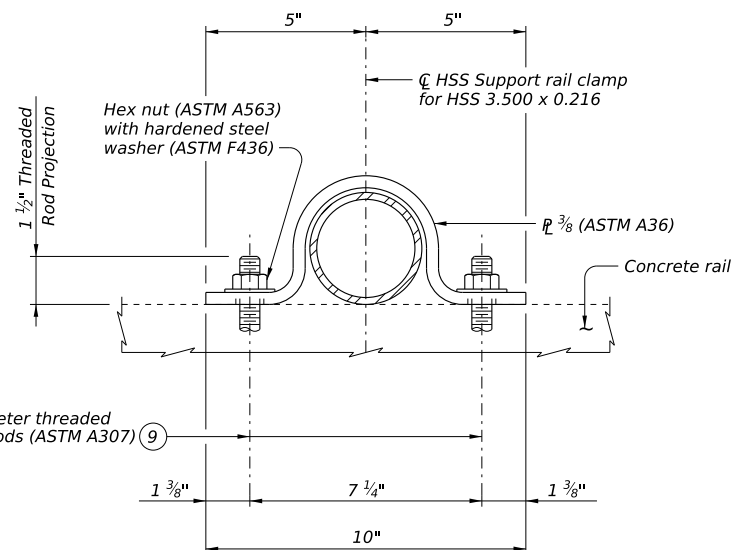


DISCLAIMER: This standard is governed by the "Texas Engineering Practice Act". No warranty of any kind is made by TxDOT for any purpose whatsoever. TxDOT assumes no responsibility for the conversion of this standard to other formats or for incorrect results or damages resulting from its use.

DATE: FILE:

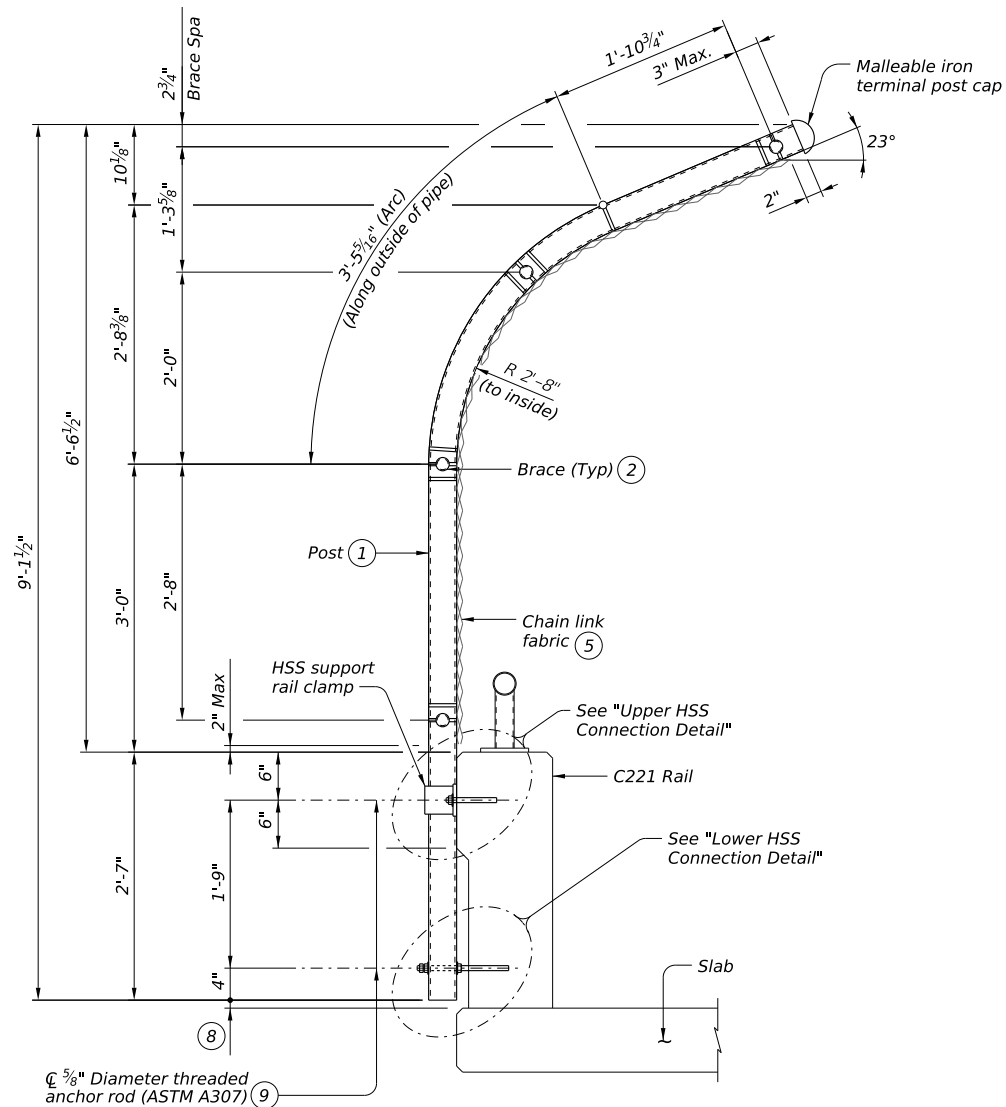


PIPE SUPPORT RAIL CLAMP ELEVATION

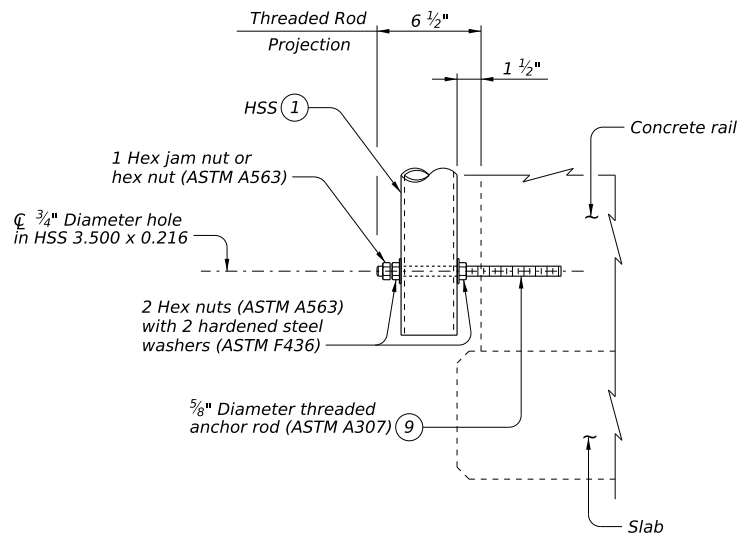


HSS SUPPORT RAIL CLAMP ASSEMBLY
UPPER HSS CONNECTION DETAIL

(Dimensions may vary according to Manufacturer's specifications.)



CHAIN LINK FENCE SECTION



LOWER HSS CONNECTION DETAIL

(Showing terminal post or line post)

- ① HSS 3.500 x 0.216 ASTM A1085 or A500 Gr B.
- ② HSS 1.660 x 0.140 ASTM A500 Gr B or A53 Gr B.
- ⑤ Zinc-coated steel chain link fabric: 2" mesh, 9 gauge, 8 ft. high, per ASTM A392, top and bottom knuckle selvage.
- ⑧ Dimension varies on superstructure type. C221 Rails = 1" with no overlay, increased 2" with overlay. On bridges with significant beam camber, variable length in dimension may be anticipated.
- ⑨ See "Material Notes" for threaded anchor rod information.

CONSTRUCTION NOTES:

Chain link fence post must be plumb unless otherwise approved. Test adhesive anchors in accordance with Item 450.3.3, "Tests". Test 3 anchors per 100 anchors installed. Perform corrective measures to provide adequate capacity if any of the tests do not meet the required test load. Repair damage from testing as directed.

MATERIAL NOTES:

All chain link fence materials must conform to standard specifications, Item "Chain Link Fence" unless shown otherwise. Galvanize all steel components unless noted otherwise. Provide ASTM A1085, A500 Gr B for HSS 3.500 x 0.216. Provide ASTM A500 Gr B or A53 Gr B for HSS 1.660 x 0.140. Provide ASTM A36 for steel plates. Anchor bolts must be 5/8" Dia ASTM A307 Gr A fully threaded rods. Hex nuts must conform to ASTM A563 requirements. Embed fully threaded rods into concrete rail with a Type III, Class C, D, E, or F anchor adhesive. Minimum adhesive anchor embedment depth is 5". Anchor adhesive chosen must be able to achieve a factored bond strength in tension of 6 kips each anchor (edge distance and anchor spacing must be accounted for). Submit signed and sealed calculations or the Manufacturer's published literature showing the proposed anchor adhesive's ability to develop this load to the Engineer for approval prior to use. Anchor installation, including hole size, drilling, and clean out, must be in accordance with Item 450, "Railing."

GENERAL NOTES:

This sheet must be used with a concrete Combination Rail. Rails that can be used with this sheet are C221 Rails. Chain link fence details shown on this standard are adequate for all speeds. If used, optional side slot drains shown on rail standards must not be any closer than 6" from chain link post to edge of side slot drains. This fence assembly cannot be used on bridges with expansion joints providing more than 5" movement. Payment for materials, fabrication, and installation of this assembly are to be included in unit price bid in accordance with Item 450, "Rail (CLF-CRO)." Approximate weight of fence = 25 plf.

SHEET 2 OF 2

		Bridge Division Standard	
CURVED CHAINLINK FENCE FOR RAILROAD OVERPASS			
CLF-CRO			
FILE: RL-CLF-CRO-24.dgn	DN: TxDOT	CK: TxDOT	DW: TxDOT
©TxDOT	June 2024	CONT	SECT
REVISIONS		JOB	HIGHWAY
DIST	COUNTY	SHEET NO.	