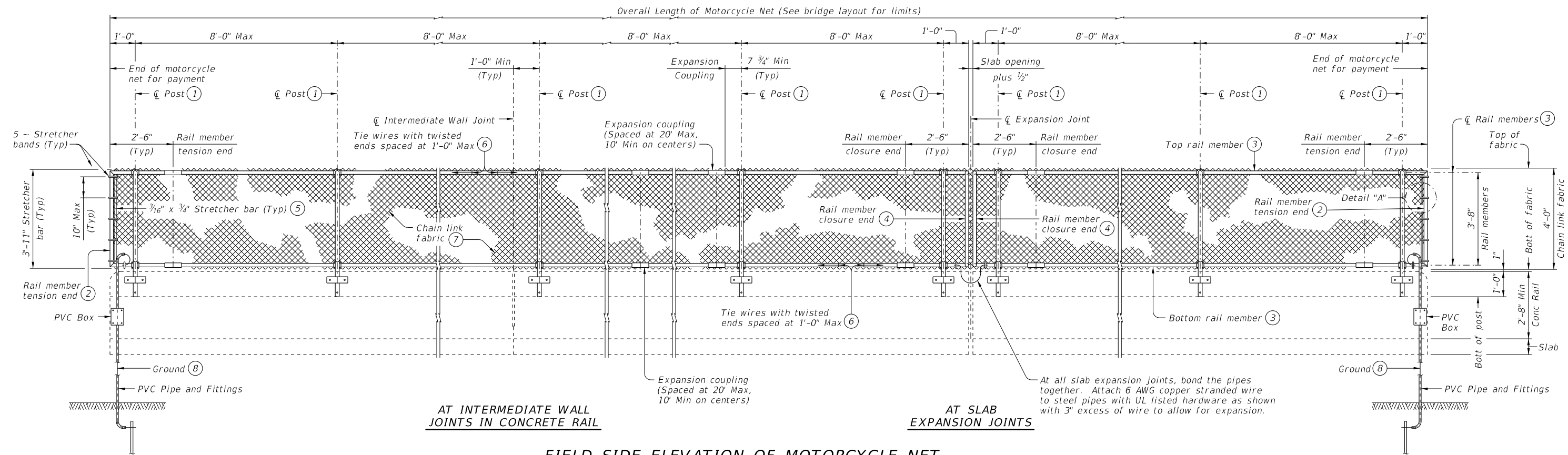
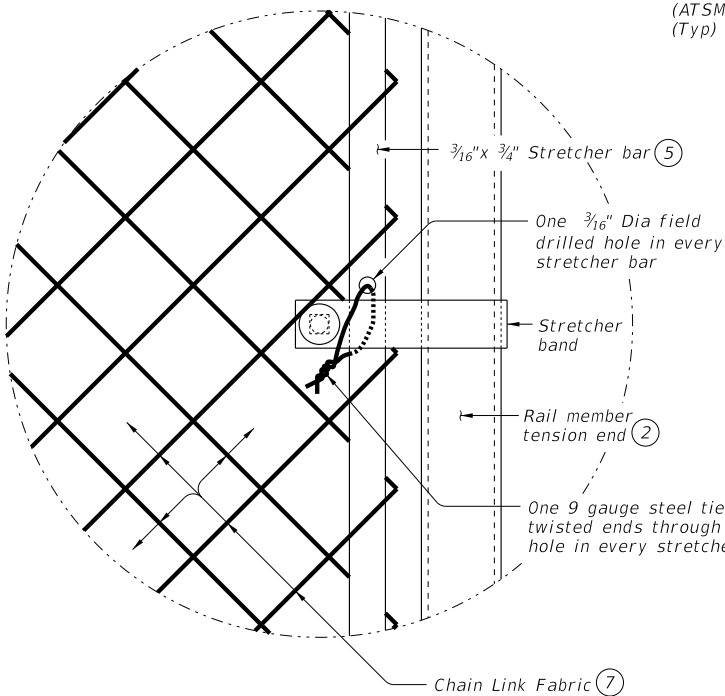


DISCLAIMER: The use of this standard is governed by the "Texas Engineering Practice Act." No warranty of any kind is made by TxDOT for any purpose whatsoever. TxDOT assumes no responsibility for the conversion of this standard to other formats or for incorrect results or damages resulting from its use.

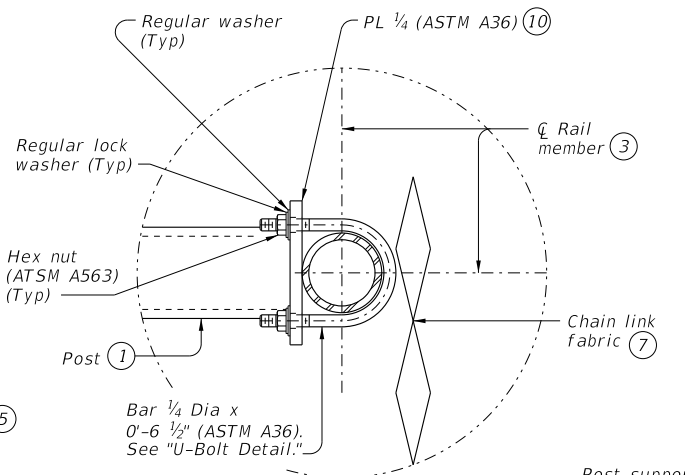
DATE: FILE:



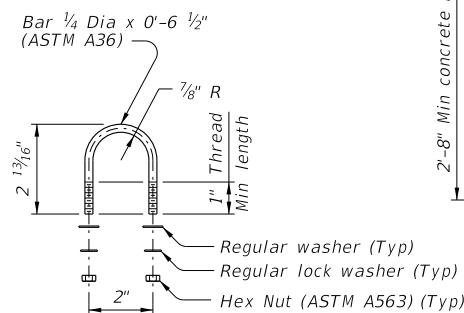
FIELD SIDE ELEVATION OF MOTORCYCLE NET



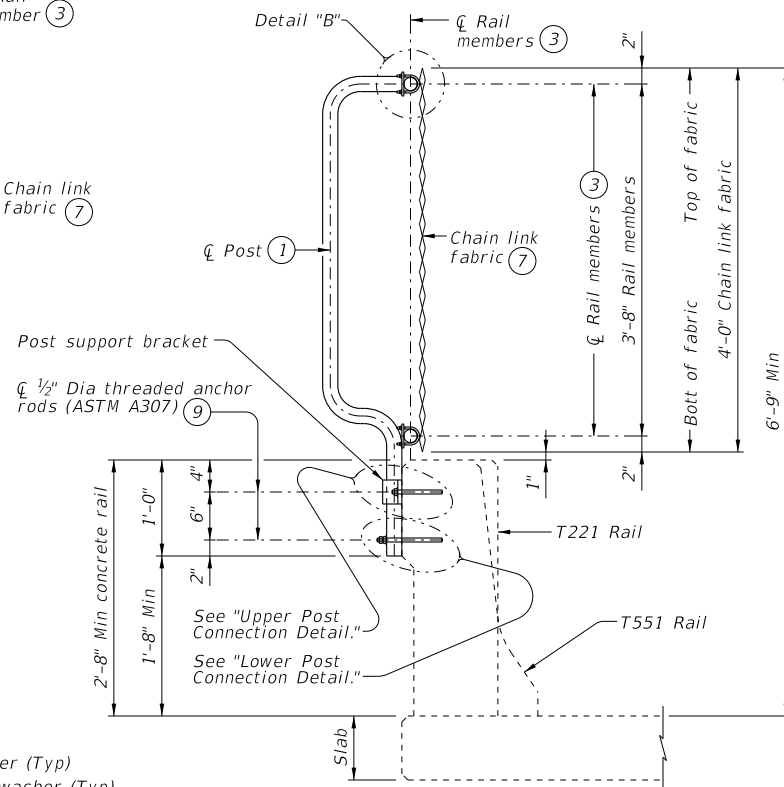
DETAIL "A"



DETAIL "B"



U-BOLT DETAIL



MOTORCYCLE NET SECTION

Showing section on T551 or T221 rails. T222 or SSTR rails are similar.

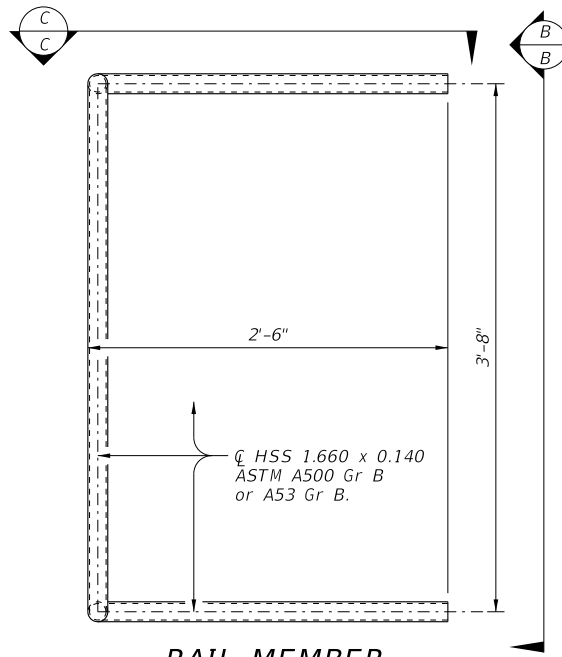
- ① HSS 1.900 x 0.188 ASTM A1085 or A500 Gr B. See "Post Detail."
- ② HSS 1.660 x 0.140 ASTM A500 Gr B or A53 Gr B. See "Rail Member Tension End Elevation."
- ③ HSS 1.660 x 0.140 ASTM A500 Gr B or A53 Gr B.
- ④ HSS 1.660 x 0.140 ASTM A500 Gr B or A53 Gr B. See "Rail Member Closure End Elevation."
- ⑤ Contractor must field drill one 3/16" Dia hole in every stretcher bar and use a 9 gauge steel tie wire to tie one stretcher band and chain link fabric together. Locate drilled hole for steel tie wire at approximate mid-height of fence.
- ⑥ 9 gauge steel tie wires attach chain link fabric to HSS. Locate twisted ends of tie wire on field side of rail.
- ⑦ 9 gauge steel Chain Link Fabric, 2" Mesh, knuckle selvage top and bottom.
- ⑧ Ground bottom rail member at the beginning and end of fence and down the nearest bent. Attach 6 AWG copper stranded wire to steel post with UL listed hardware and run other end of copper stranded wire to 5/8" Dia minimum copper-clad steel rod 8 ft in length. Install ground rod as per Item 550 and this sheet. The 6 AWG copper stranded wire must run through 1/2" Schedule 40 PVC pipe, fittings and PVC box attached to the field side of rail.
- ⑨ See "Material Notes" for threaded anchor rods and installation requirements.
- ⑩ See "U-Bolt Plate Detail."

SHEET 1 OF 2

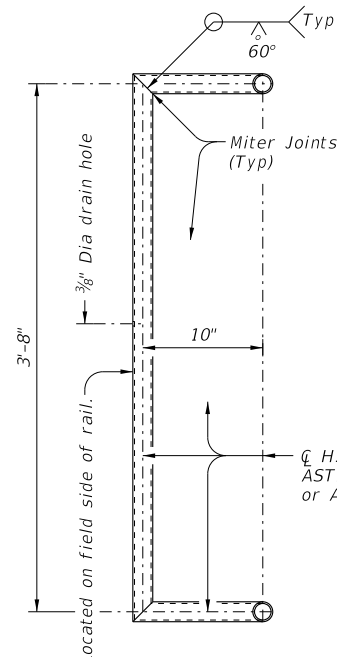
		Bridge Division Standard	
<h1>MOTORCYCLE NET</h1>			
<h2>MN</h2>			
FILE: RL-MN-19.dgn	DN: TxDOT	CK: TAR	DW: JTR
©TxDOT September 2019	CONT	SECT	JOB
REVISIONS			HIGHWAY
	DIST	COUNTY	SHEET NO.

DISCLAIMER: The use of this standard is governed by the "Texas Engineering Practice Act." No warranty of any kind is made by TxDOT for any purpose whatsoever. TxDOT assumes no responsibility for the conversion of this standard to other formats or for incorrect results or damages resulting from its use.

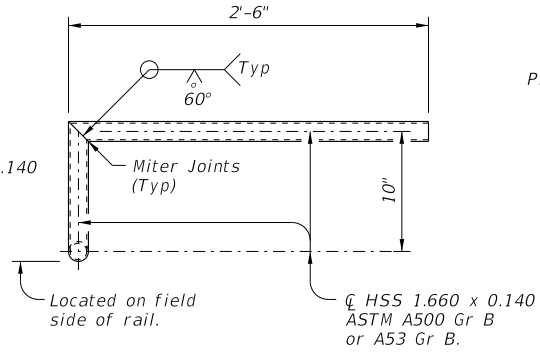
DATE: FILE:



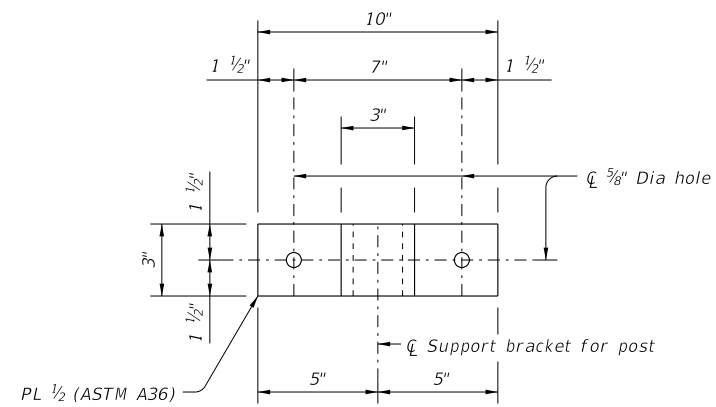
RAIL MEMBER CLOSURE END ELEVATION



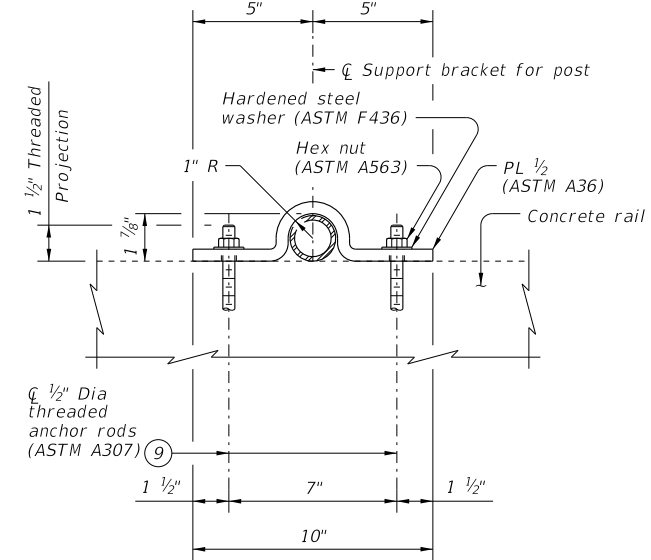
VIEW B-B



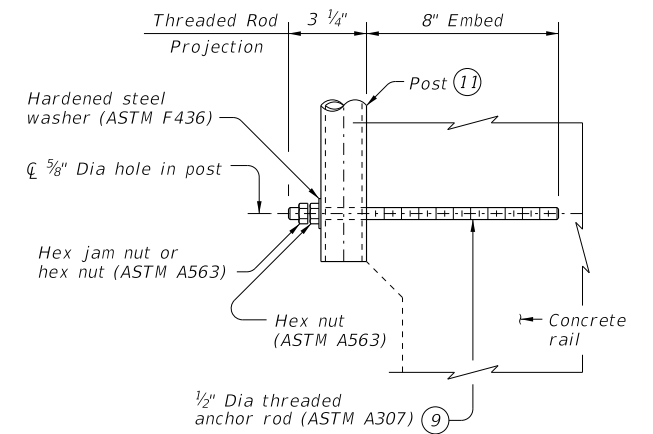
VIEW C-C



POST SUPPORT BRACKET ELEVATION

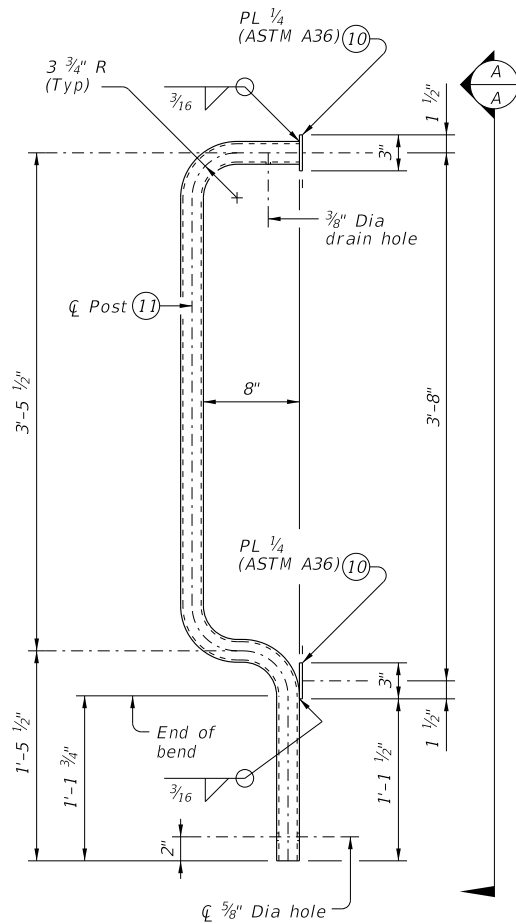


POST SUPPORT BRACKET ASSEMBLY
UPPER POST CONNECTION DETAIL

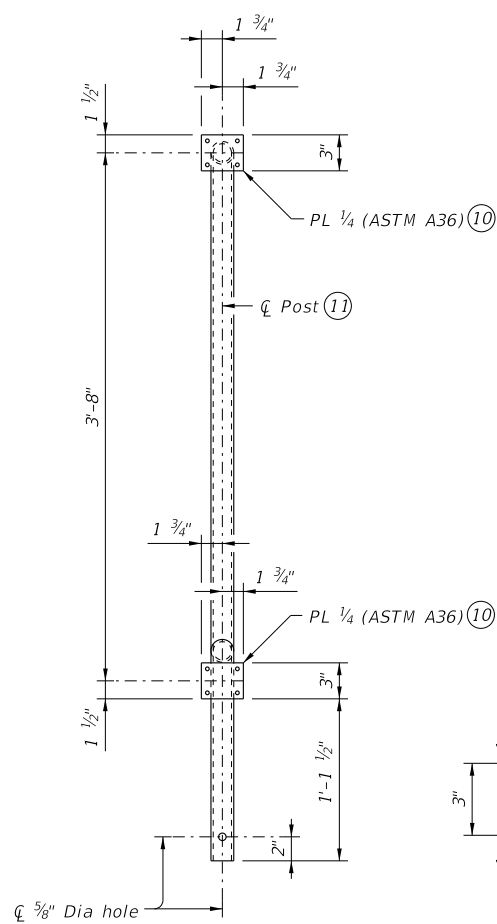


LOWER POST CONNECTION DETAIL

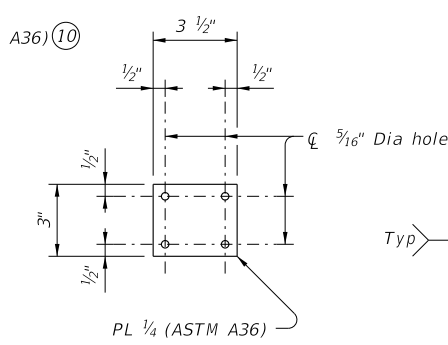
- 9 See "Material Notes" for threaded anchor rods and installation requirements.
- 10 See "U-Bolt Plate Detail."
- 11 HSS 1.900 x 0.188 ASTM A1085 or A500 Gr B.



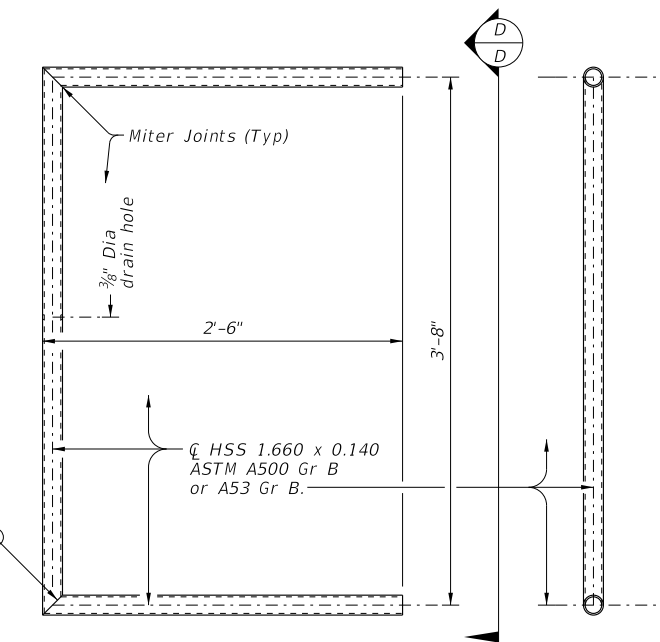
POST DETAIL



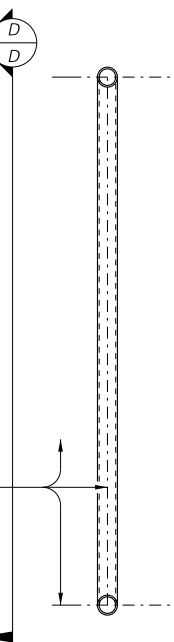
VIEW A-A



U-BOLT PLATE DETAIL



RAIL MEMBER TENSION END ELEVATION



VIEW D-D

CONSTRUCTION NOTES:
 Post must be plumb unless otherwise approved.
 Locate twisted ends of 9 gage steel tie wire on field side of rail.
 Test adhesive anchors in accordance with Item 450.3.3, "Tests". Test 3 anchors per 100 anchors installed.
 Perform corrective measures to provide adequate capacity if any of the tests do not meet the required test load.
 Repair damage from testing as directed.

MATERIAL NOTES:
 Provide Chain Link Fence materials that conform to standard specifications, Item "Chain Link Fence" unless shown otherwise.
 Galvanize all steel components unless noted otherwise.
 Provide ASTM A1085 or A500 Gr B for HSS 1.900 x 0.188.
 Provide ASTM A500 Gr B or A53 Gr B for HSS 1.660 x 0.140.
 Provide ASTM A36 for steel plates.
 Provide 1/2" Dia ASTM A307 Gr A fully threaded rods.
 Provide ASTM A563 hex nuts. Embed fully threaded rods into parapet wall with a Type III, Class C, D, E, or F anchor adhesive. Minimum adhesive anchor embedment depth is 8". Anchor adhesive chosen must be able to achieve a factored bond strength in tension of 4.5 kips each anchor (edge distance and anchor spacing must be accounted for). Submit signed and sealed calculations or the manufacturer's published literature showing the proposed anchor adhesive's ability to develop this load to the Engineer for approval prior to use. Anchor installation, including hole size, drilling, and clean out, must be in accordance with Item 450, "Railing".

GENERAL NOTES:
 These sheets must be used with a concrete bridge rail. Rails that can be used with these sheets are T551, T552, SSTR, T221, and T222 Rails. Motorcycle net may be attached to similar existing bridge rails. Motorcycle net details shown on this standard are adequate for all speeds.
 This railing cannot be used on bridges with expansion joints providing more than 5" movement.
 Payment for materials, fabrication, and installation of this assembly are to be included in unit price bid in accordance with Item 450, "Rail (MN)".
 Approximate weight of motorcycle net = 11 plf.

SHEET 2 OF 2

		Bridge Division Standard	
<h1>MOTORCYCLE NET</h1>			
<h2>MN</h2>			
FILE: RL-MN-19.dgn	DN: TxDOT	CK: TAR	DW: JTR
©TxDOT September 2019	CONT	SECT	JOB
<small>REVISIONS</small>			
DIST	COUNTY		SHEET NO.