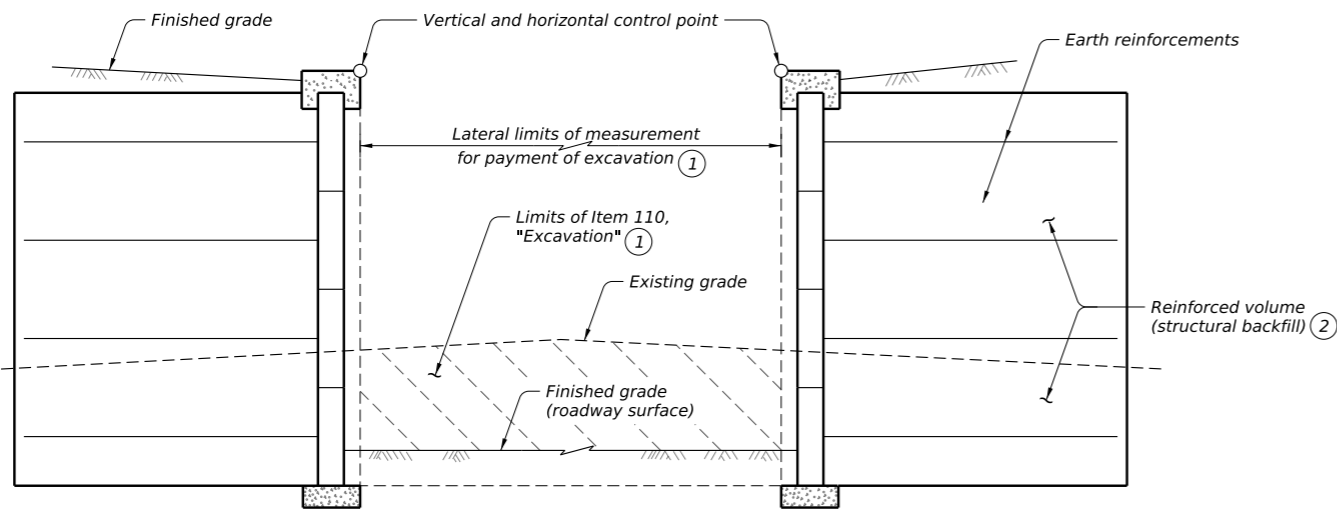
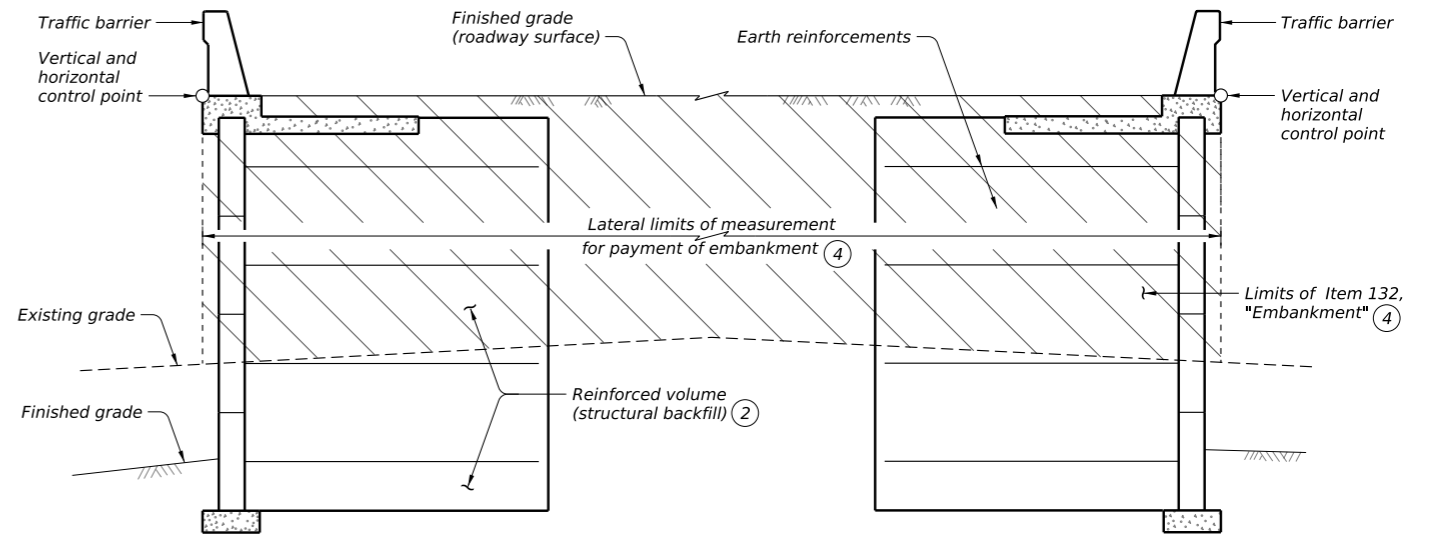


DISCLAIMER: The use of this standard is governed by the "Texas Engineering Practice Act". No warranty of any kind is made by TxDOT for any purpose whatsoever. TxDOT assumes no responsibility for the conversion of this standard to other formats or for incorrect results or damages resulting from its use.



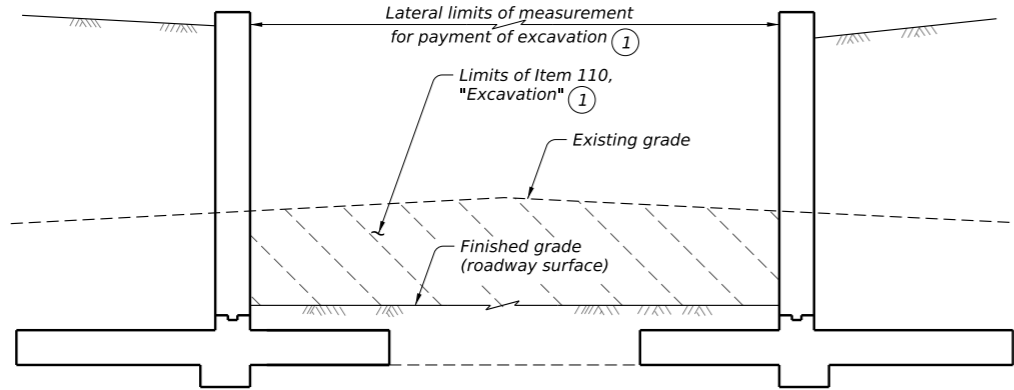
**TYPICAL SECTION ③**

Section shows excavation between MSE retaining walls.



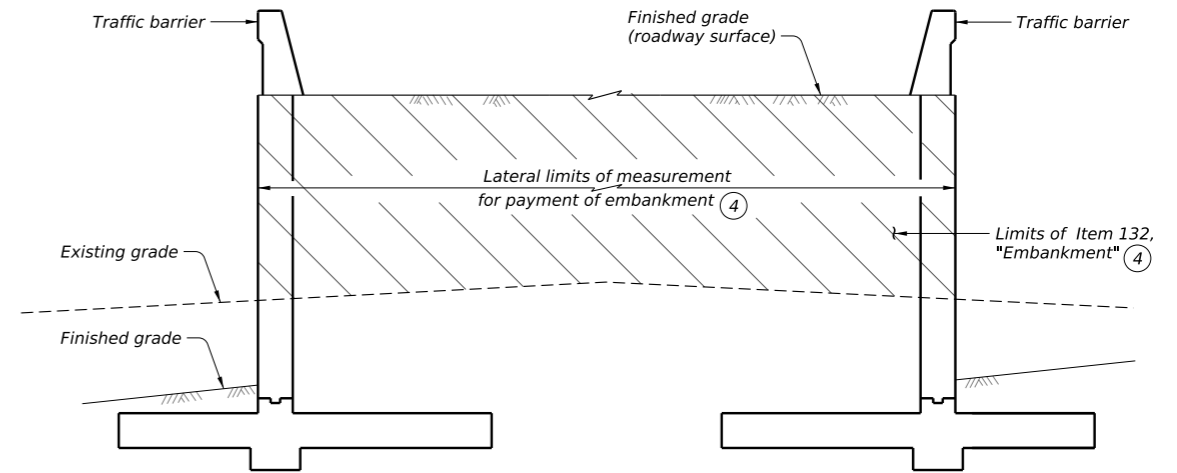
**TYPICAL SECTION ③**

Section shows embankment between MSE retaining walls.



**TYPICAL SECTION**

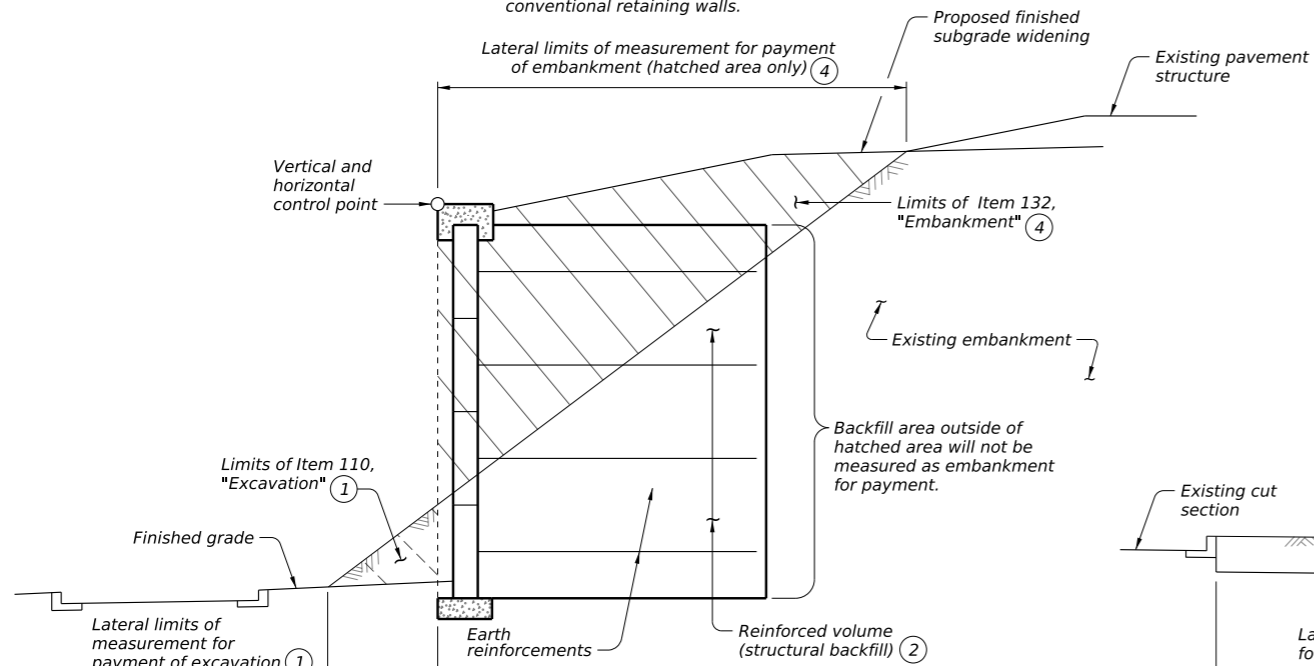
Section shows excavation between conventional retaining walls.



**TYPICAL SECTION**

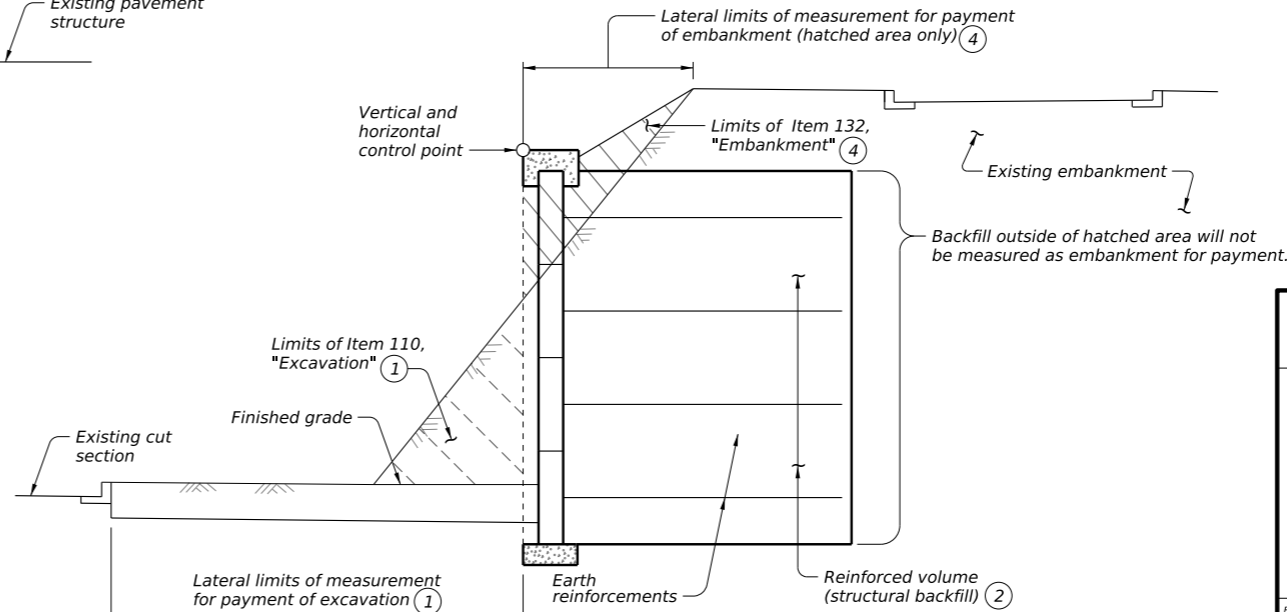
Section shows embankment between conventional retaining walls.

- ① Only the excavation above the proposed subgrade elevation will be measured for payment.
- ② Meeting requirements for Item 423, "Retaining Walls."
- ③ Earthwork measurement with other retaining wall types will be made to the horizontal control point in the same manner.
- ④ Only the embankment above the existing ground line will be measured for payment.



**TYPICAL SECTION ③**

Section shows widening embankment with MSE retaining walls.



**TYPICAL SECTION ③**

Section shows widening cut section with MSE retaining walls.

DATE:  
FILE:

		<b>Bridge Division Standard</b>	
<b>EARTHWORK MEASUREMENT AT RETAINING WALL</b>			
<b>RW(EM)</b>			
FILE: RW-EM-25.dgn	DN: TxDOT	CK: TxDOT	DW: TxDOT
© TxDOT October 2025	CONT	SECT	JOB
REVISIONS		HIGHWAY	
DIST		COUNTY	SHEET NO.