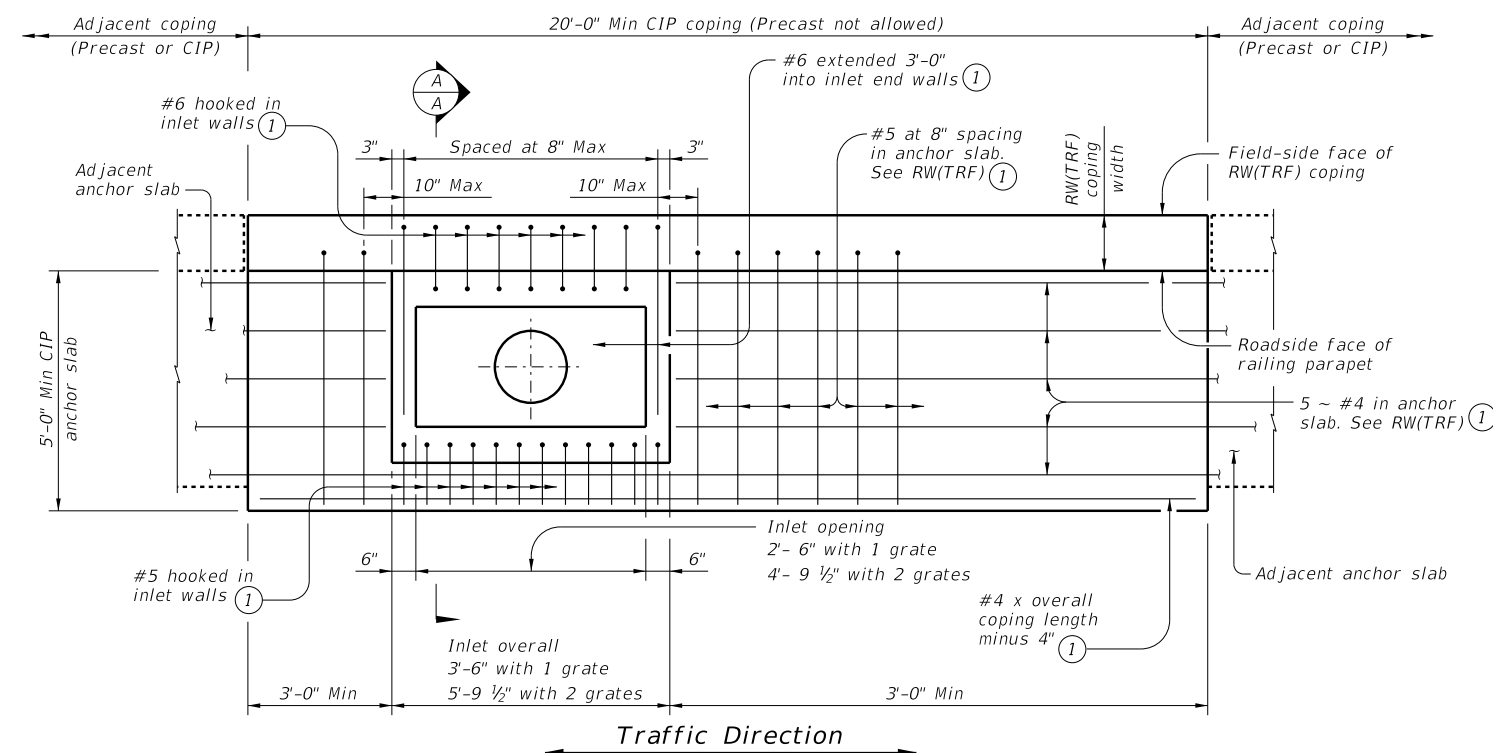
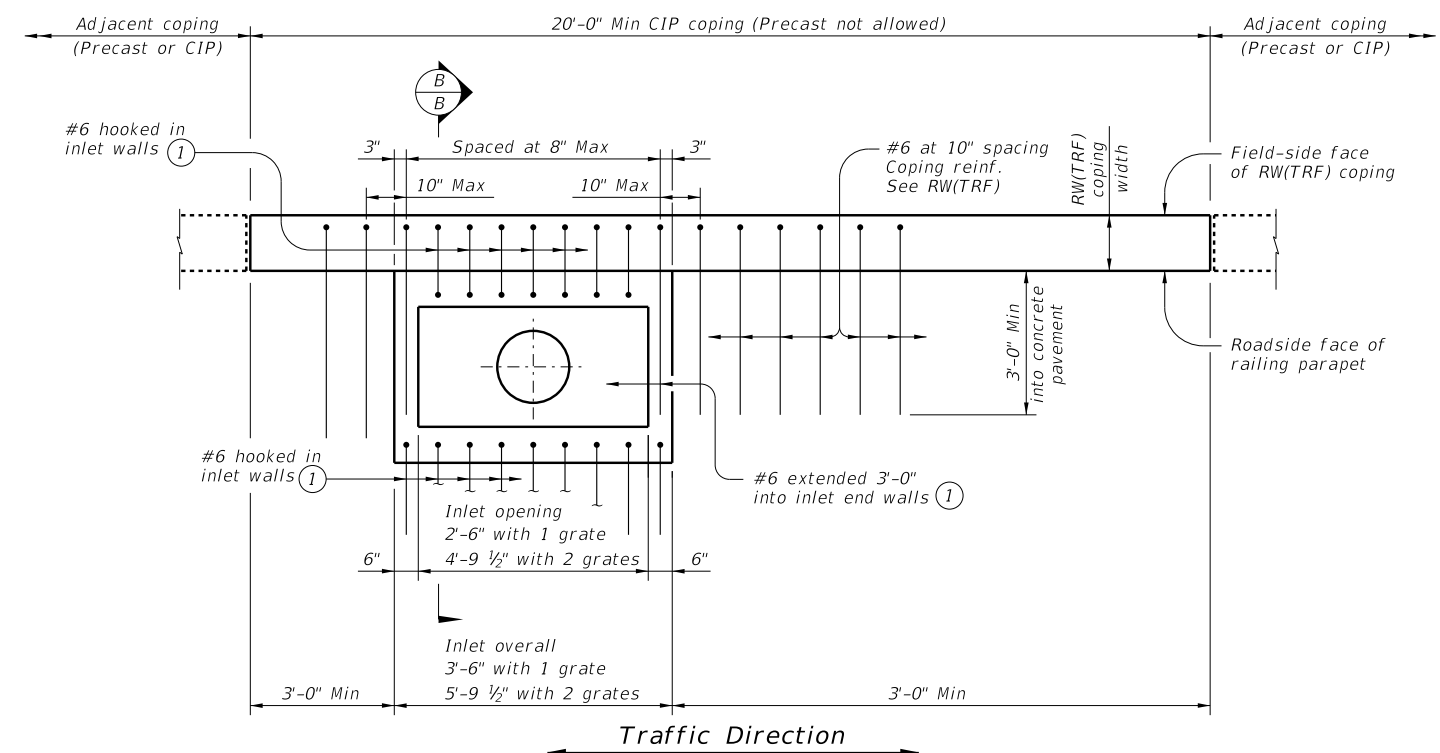


DISCLAIMER: The use of this standard is governed by the "Texas Engineering Practice Act". No warranty of any kind is made by TxDOT for any purpose whatsoever. TxDOT assumes no responsibility for the conversion of this standard to other formats or for incorrect results or damages resulting from its use.



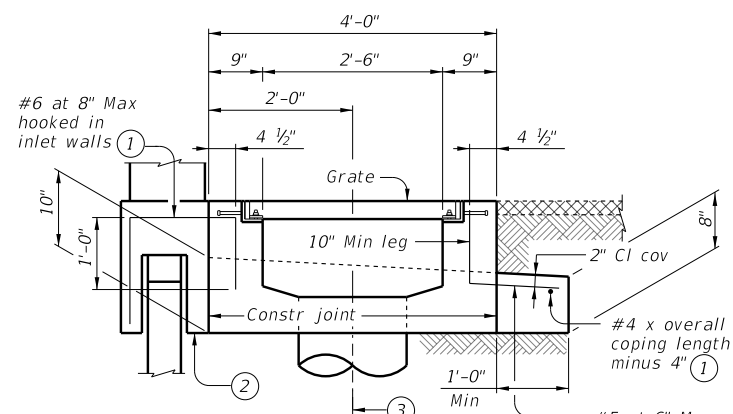
**PLAN WITH ANCHOR SLAB
(ADJACENT TO ACP)**

(Frame and grate[s] not shown for clarity.)



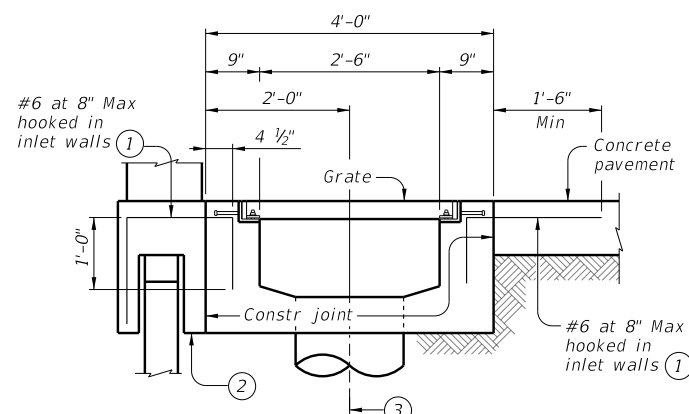
**PLAN WITHOUT ANCHOR SLAB
(ADJACENT TO CONCRETE PAVEMENT)**

(Frame and grate[s] not shown for clarity.)



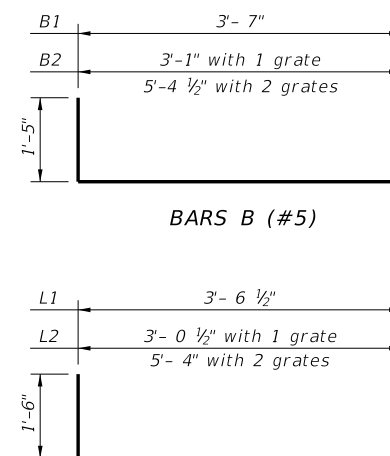
SECTION A-A

(Only showing reinforcement connecting inlet.)



SECTION B-B

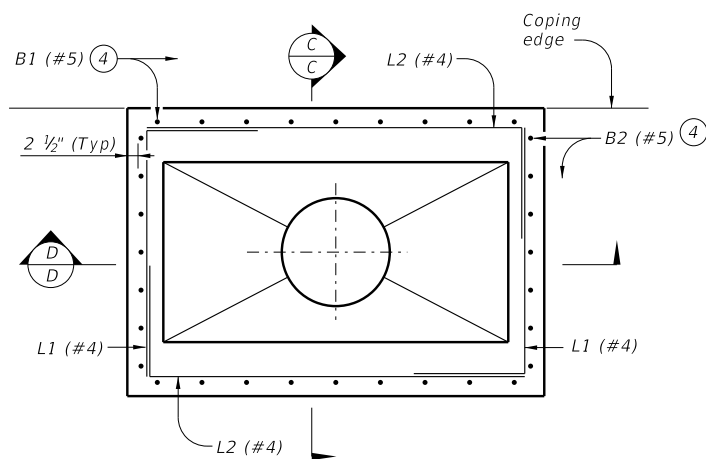
(Only showing reinforcement connecting inlet.)



BARS B (#5)

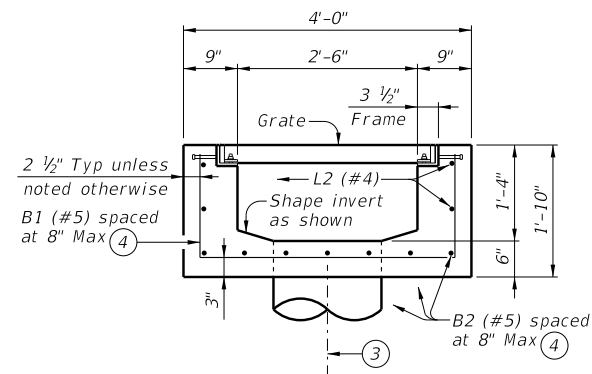
BARS L (#4)

- ① Reinforcement considered part of retaining wall coping and is subsidiary to Item 423, "Retaining Walls".
- ② Coping against inlet must extend to bottom of inlet or lower.
- ③ ϕ 12 inch diameter or 18 inch diameter pipe, straight drop. See details elsewhere for size and location.
- ④ Cut or bend to clear pipe.

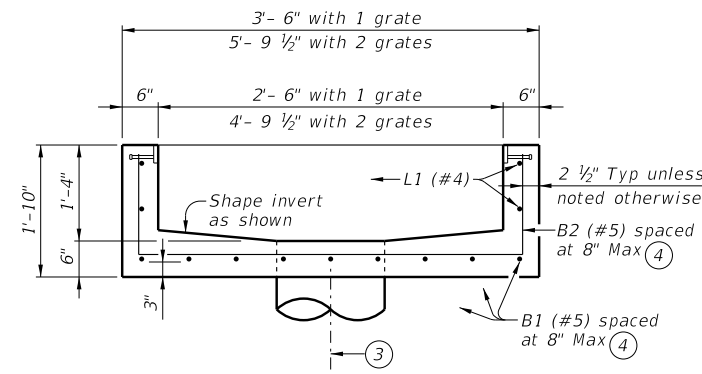


PLAN OF INLET

(Showing inlet reinforcing.)



SECTION C-C



SECTION D-D

HL93 LOADING

SHEET 1 OF 2

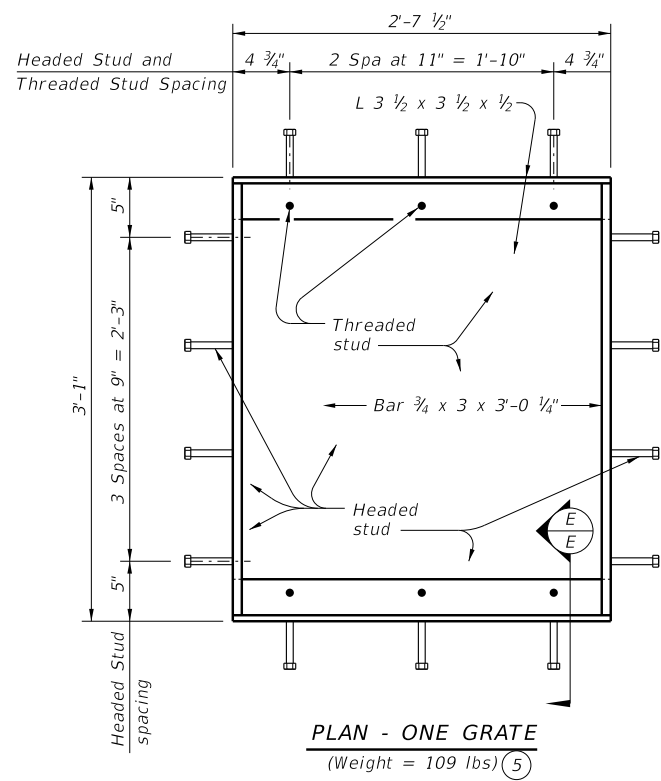


**ROADWAY INLET
FOR MSE RETAINING WALL
TRAFFIC RAIL FOUNDATION**

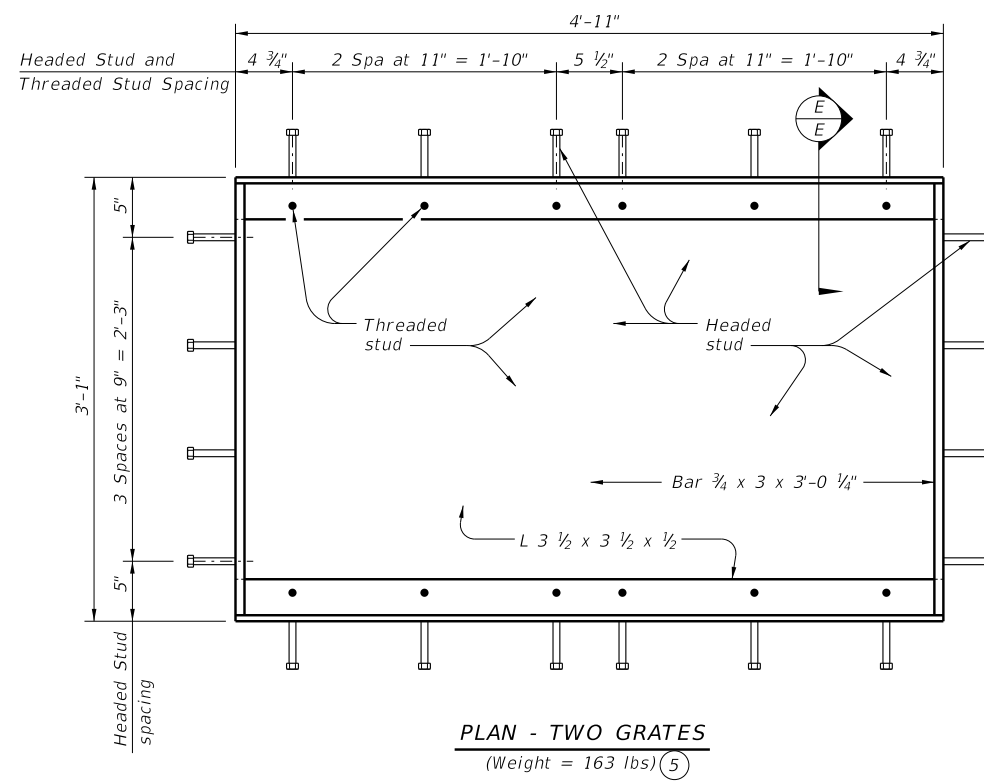
RW(RI)

FILE: RW-RI-22.dgn	DN: TxDOT	CK: TxDOT	DW: TxDOT	CK: TxDOT
©TxDOT June 2022	CONT	SECT	JOB	HIGHWAY
REVISIONS				
	DIST	COUNTY		SHEET NO.

DATE:
FILE:

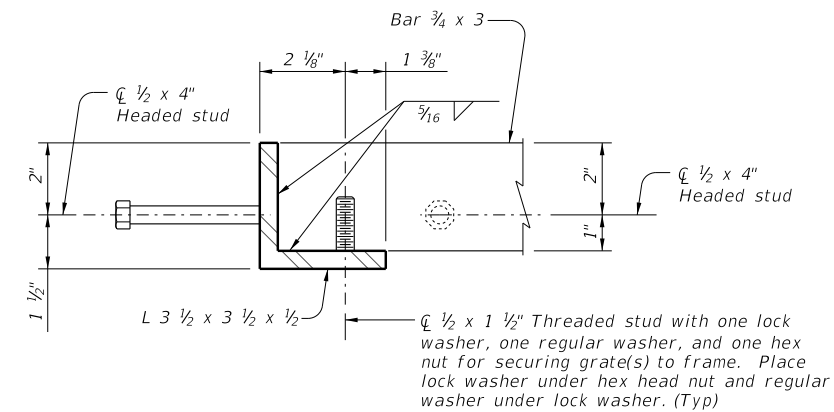


PLAN - ONE GRATE
(Weight = 109 lbs) (5)



PLAN - TWO GRATES
(Weight = 163 lbs) (5)

FRAME DETAILS



SECTION E-E

FABRICATION NOTES:

Assemble grate in shop to ensure fit in field.
Electric-arc end weld all headed and threaded studs to frame with complete fusion.

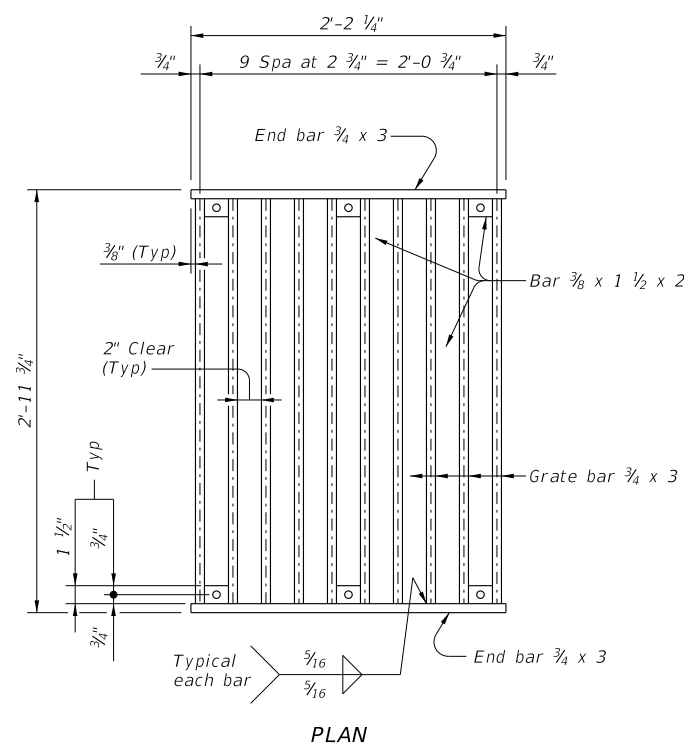
MATERIAL NOTES:

Provide Class C concrete ($f'c = 3,600$ psi.)
Provide Grade 60 reinforcing steel.
Provide A572 Grade 50 or A709 Grade 50 steel for grate and frame.
Galvanize grate, frame, nuts, and washers in accordance with Item 445, "Galvanizing."

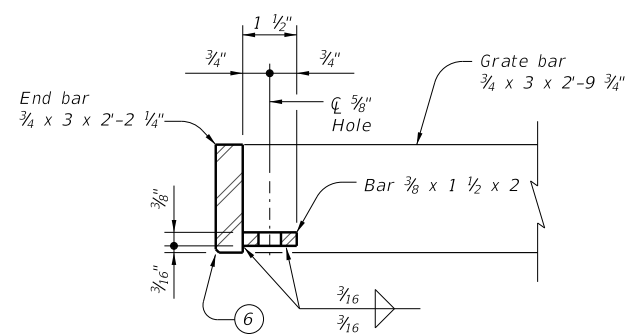
GENERAL NOTES:

steel reinforcement shown is specifically for roadw
Payment for inlets shown on this standard, including frame and grates, will be in accordance with Item 465, "Junction Boxes, Manholes, and Inlets" by the following types:
Inlet (Complete) (Type MSE1) for one grate inlets
Inlet (Complete) (Type MSE2) for two grate inlets

Cover dimensions are clear dimensions, unless noted otherwise.
Reinforcing bar dimensions shown are out-to-out of bar.



PLAN



SECTION THROUGH END

- Weight provided for Contractor's information only.
- Chamfer end bar as necessary to eliminate conflict with fillet on frame angles.

GRATE DETAILS
(Weight of one grate = 251 lbs) (5)

**ROADWAY INLET
FOR MSE RETAINING WALL
TRAFFIC RAIL FOUNDATION**

RW(RI)

FILE:	DN:	CK: TxDOT	DW:	CK:
©TxDOT	CONT	SECT	JOB	HIGHWAY
REVISIONS				
DIST	COUNTY			SHEET NO.