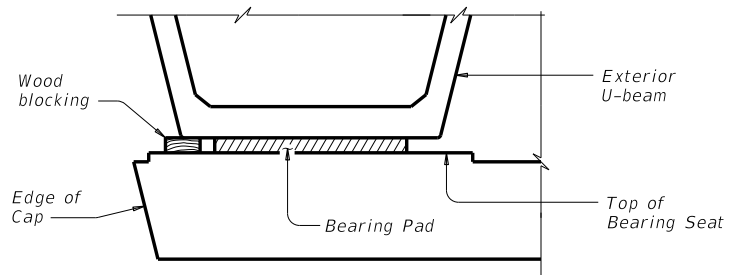


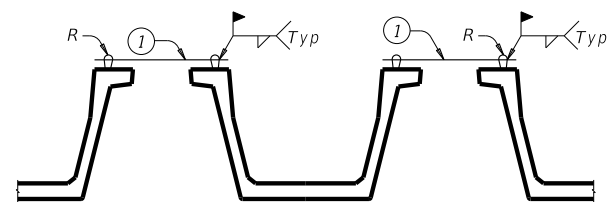
DISCLAIMER: This standard is governed by the "Texas Engineering Practice Act." No warranty of any kind is made by TxDOT for any purpose whatsoever. TxDOT assumes no responsibility for the conversion of this standard to other formats or for incorrect results or damages resulting from its use.



**MINIMUM BLOCKING OF EXTERIOR U-BEAM**

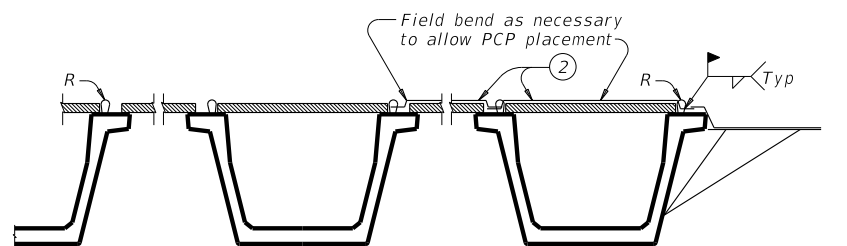
Required minimum blocking of exterior U-beam must be in place before pouring slab concrete. Leave blocking in place for at least 4 days after slab is cast and afterwards remove at the Contractor's convenience.

- ① Weld two #5 bars at each end of each beam to Bars R between all U-Beams immediately after erection. This reinforcement is in addition to that shown for the thickened slab end. This must be in place prior to placing any precast deck panels.
- ② Weld #5 bars at 15' Max spacing along exterior beam and exterior bay after precast deck panels have been placed and prior to placing overhang formwork. This reinforcement is in addition to that shown for the concrete slab.



**ERECTION BRACING**

(Reinforcement placement after U-Beam erection)



**SLAB PLACEMENT BRACING**

(Reinforcement placement after PCP placement)

**MINIMUM BEAM BRACING**

**CONSTRUCTION NOTES:**

Systems equal to or better than those shown may be used provided details of such systems are submitted and approved prior to erection.

**GENERAL NOTES:**

Use of these systems or details does not relieve the Contractor of the responsibility for the adequacy of the bracing and the safety of the structure.



**MINIMUM ERECTION AND BRACING REQUIREMENTS PRESTR CONC U-BEAM SPANS**

**MEBR(U)**

FILE: UB-MEBR(U)-14.dgn	DN: TxDOT	CK: TxDOT	DW: TxDOT	CK: TxDOT
©TxDOT July 2014	CONT	SECT	JOB	HIGHWAY
REVISIONS				
	DIST	COUNTY	SHEET NO.	

DATE:  
FILE: