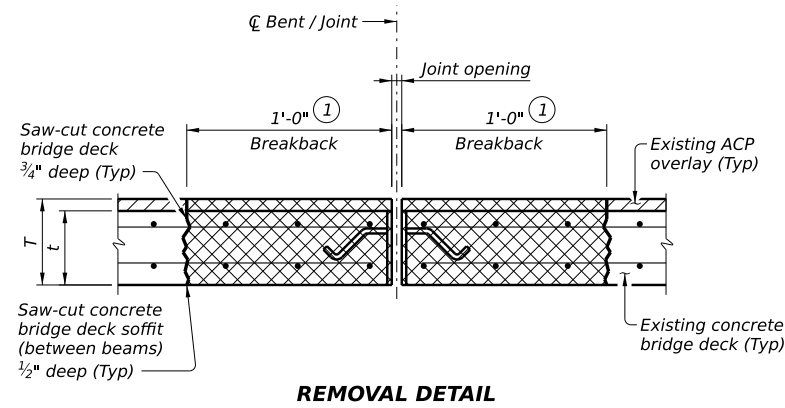
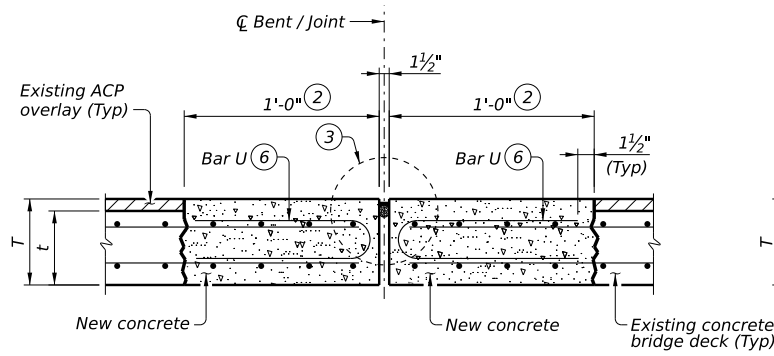


DISCLAIMER: This standard is governed by the "Texas Engineering Practice Act". No warranty of any kind is made by TxDOT for any purpose whatsoever. TxDOT assumes no responsibility for the conversion of this standard to other formats or for incorrect results or damages resulting from its use.

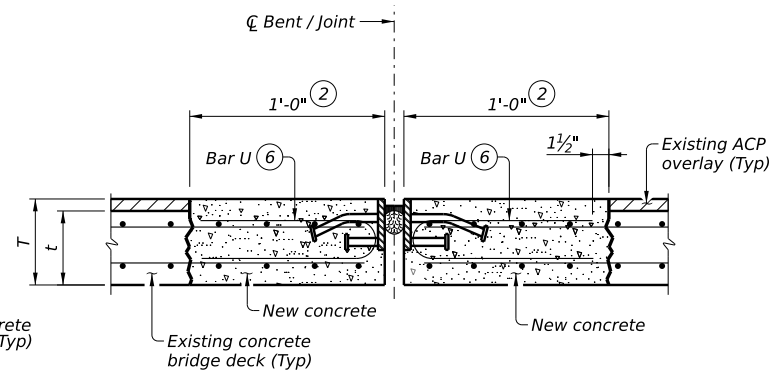
DATE: FILE:



REMOVAL DETAIL

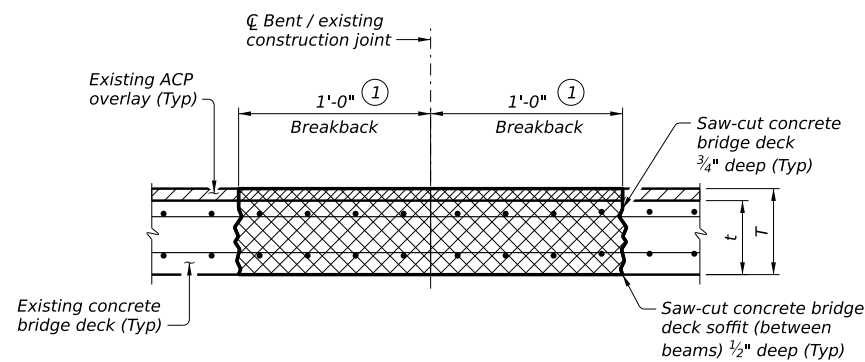


RECONSTRUCTION DETAIL
Silicone Joint Seal

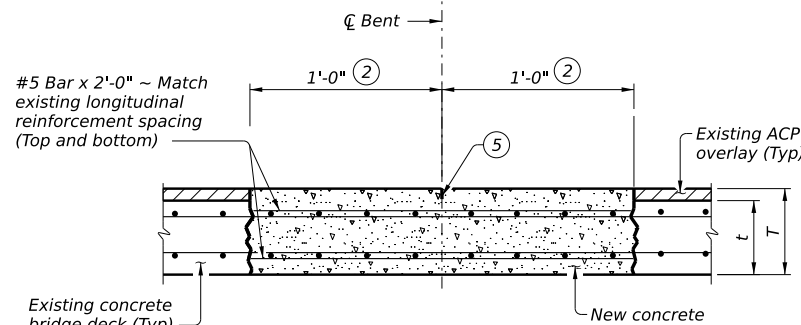


RECONSTRUCTION DETAIL ④
Showing armor joint. SEJ Similar

EXPANSION JOINT DETAILS



REMOVAL DETAIL



RECONSTRUCTION DETAIL

CONTINUOUS SLAB DETAILS

NOTE TO DESIGNER:
This sheet is to be used as a guide for repairing or replacing expansion joints in concrete bridge decks. Details with appropriate notes from this guide should be prepared for the specific application. Verify deck thickness and overlay thickness prior to commencing work. Note that these details are applicable only for existing ACP thickness of 2" or less. Additional reinforcement is required if ACP thickness is greater than 2". Breakback dimension may be increased if warranted by deck condition. See elsewhere in plans for details related to cleaning and sealing joints.
This sheet cannot be used without modification. The details shown may need to be amended if the exact existing conditions are not covered. In all cases, details and notes not required must be deleted. This note and the phrase "Not to be used as a standard" must be removed and the sheet must be signed and sealed by a Professional Engineer.

REINFORCING BAR TABLE

Size	Bar Laps	
	Uncoated	Coated
#4	1'-7"	2'-5"
#5	2'-0"	3'-0"

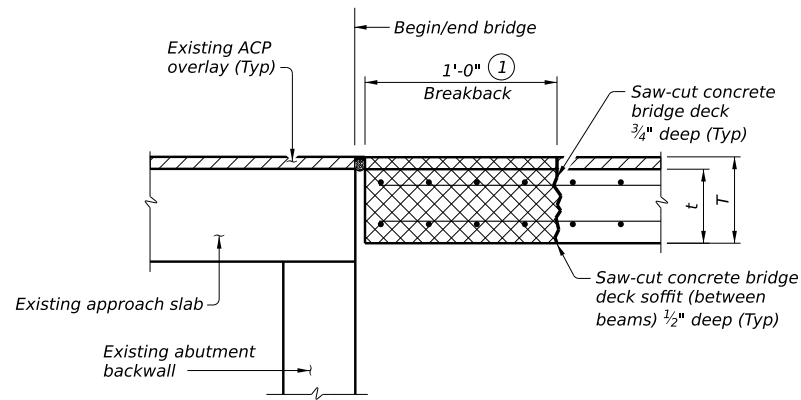
Reinforcing steel is approximately 3 lbs/sf per mat

LEGEND

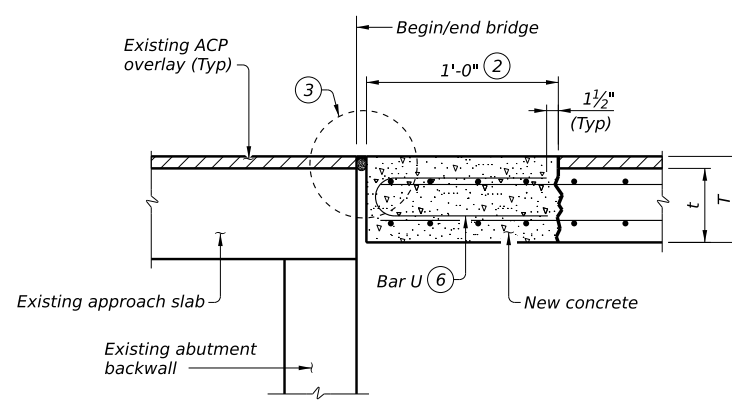
T	Thickness of joint repair (t + ACP thickness)
t	Existing deck thickness

MATERIAL NOTES:
Provide Grade 60 reinforcing steel.
Provide Class K or Class S concrete (f'c=4,000 psi, Course Aggregate Grades 2-5). Alternatively, if approved by the Engineer, provide Type A or D concrete repair materials meeting the requirements of DMS 4655, "Concrete Repair Materials." Achieve a minimum compressive strength f'c = 3,600 psi prior to opening to traffic.

GENERAL NOTES:
Perform work in accordance with the TxDOT Concrete Repair Manual, Chapter 3, Section 4 and Item 785, "Bridge Joint Repair or Replacement." A copy of the Concrete Repair Manual must be available onsite during all concrete repair operations. All work to remove existing joint and install new joint, including repair concrete and installing new reinforcing steel, is paid in accordance with Item 785, "Bridge Joint Repair or Replacement" and measured by the linear foot.
Obtain approval for all tools, equipment, materials and techniques proposed before beginning work.



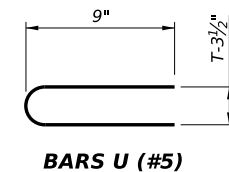
REMOVAL DETAIL



RECONSTRUCTION DETAIL

BEGIN/END OF BRIDGE SLAB DETAILS

With Pourable Joint Seal



P.E. SEAL REQUIRED
PRELIMINARY
SUBJECT TO REVISION

This document is released for informational purposes under the authority of XXX XXXX
P.E. XXXXX on XX/XX/XX.
It is not to be used for regulatory approval, permit, bidding, or construction purposes.

Texas Department of Transportation Bridge Division

JOINT REPAIR AND REPLACEMENT DETAILS
BRIDGES WITH ASPHALT OVERLAY

(Not to be used as a standard)
NBI: XX-XXX-XXXX-XX-XXX

FILE: WD-JRR(ACP)-24.dgn	DN: TxDOT	CK: TxDOT	DW: TxDOT	CK: TxDOT
©TxDOT February 2024	CONT	SECT	JOB	HIGHWAY
REVISIONS	DIST	COUNTY	SHEET NO.	