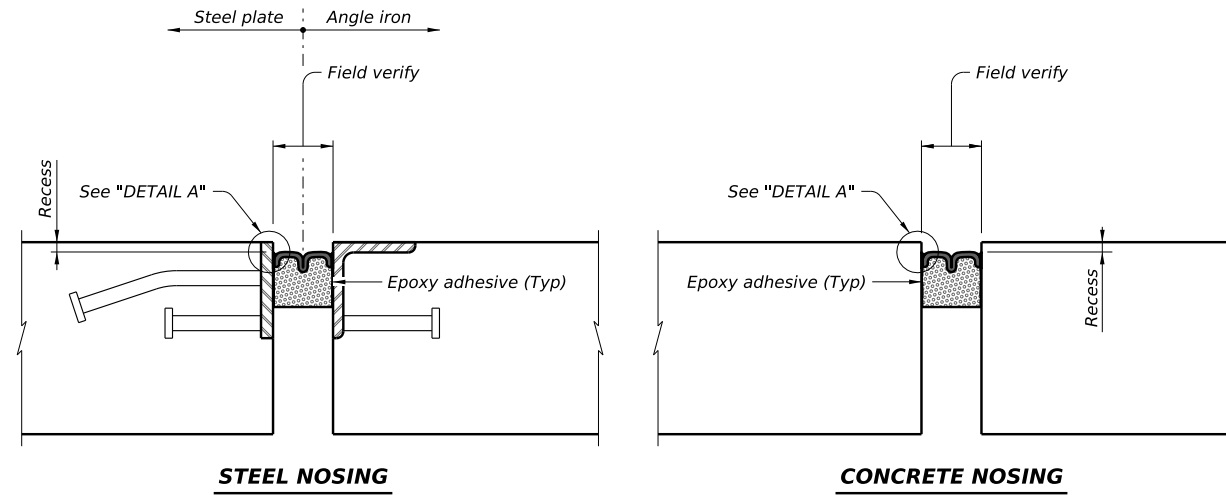
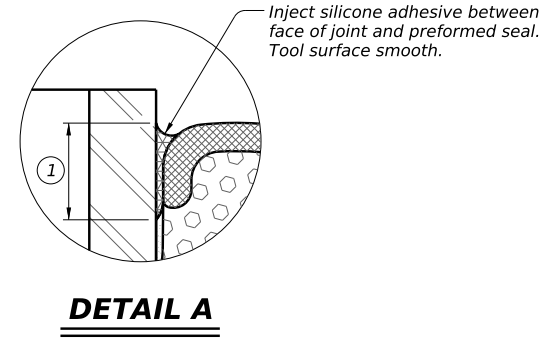


DISCLAIMER: The use of this standard is governed by the "Texas Engineering Practice Act". No warranty of any kind is made by TxDOT for any purpose whatsoever. TxDOT assumes no responsibility for the conversion of this standard to other formats or for incorrect results or damages resulting from its use.

DATE: FILE:



**JOINT SECTIONS**



**NOTE TO DESIGNER:**  
 This drawing shows installation details for precompressed silicone and foam hybrid joint seals and is applicable for use both in new bridge joints and resealing existing joints. Use Item 438-6011 when specifying the use of this joint type. This sheet may not be used without modification. The details shown may need to be amended if the exact existing conditions are not covered. In all cases, details and notes not required must be deleted. This note and the phrase "Not to be used as a standard" must be removed and the sheet must be signed and sealed by a Professional Engineer.

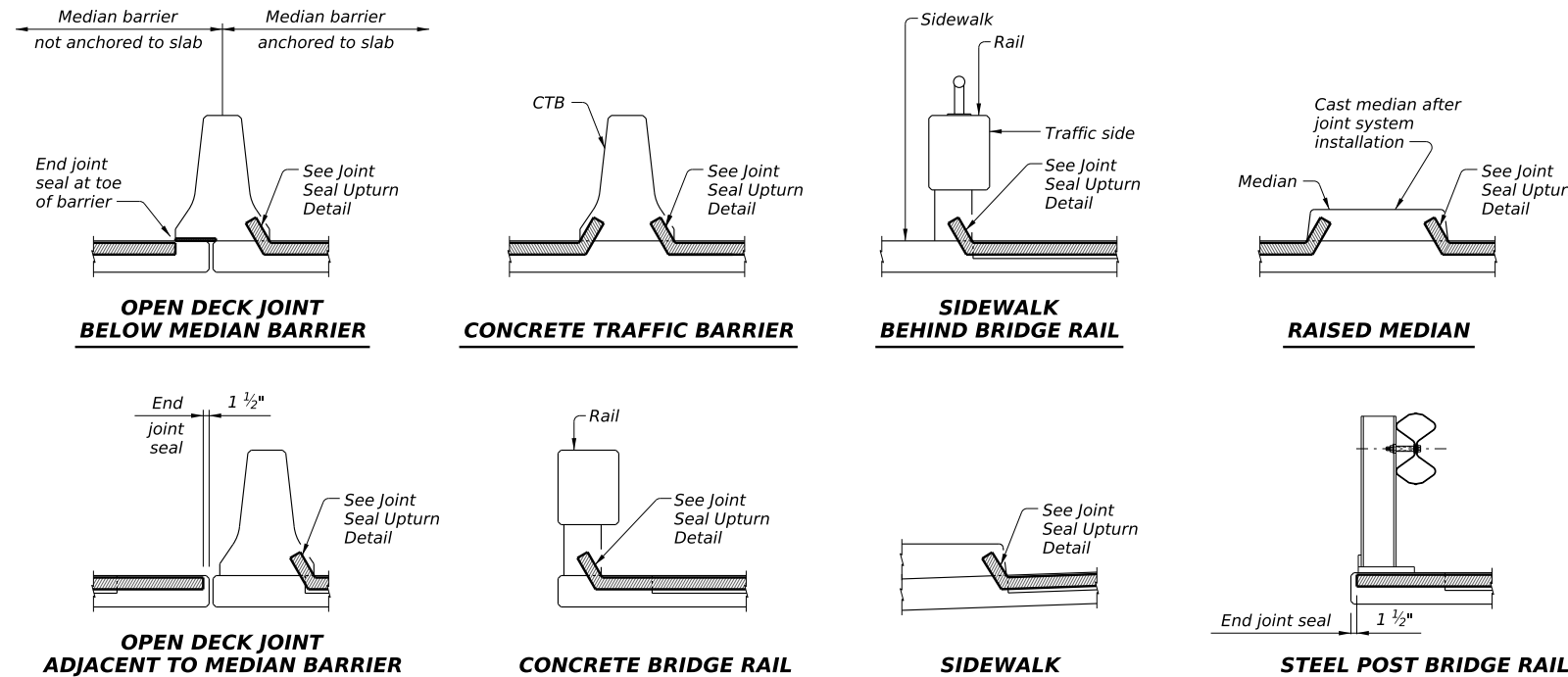
APPROVED PRECOMPRESSED FOAM SEAL MANUFACTURERS		
Manufacturer <sup>(2)</sup>	Steel or Concrete Section	Seal Type
EMSEAL	As shown	BEJS
FTP Infrastructure	As shown	Mataspan OC2000
Sealtite	As shown	Sealtite 50N
SSI	As shown	Silspec SES
TuffTex	As shown	RepJoint PF-UV
Watson Bowman Acme	As shown	Wabo FS

- ① Injection depth as recommended by Manufacturer.
- ② Other manufacturers of bridge expansion joint foam seal may be listed on the plans.

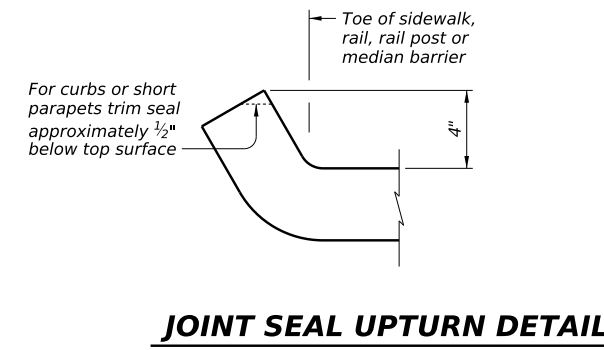
- PROCEDURES:**
- 1) Correctly size joint seal based on field measurement and in accordance with Manufacturer's specifications. Multiple seal widths may be required. Ensure proper seal is selected for each joint.
  - 2) Abrasive blast clean existing joint surfaces where seal is to be applied.
  - 3) Wipe down joint surfaces to remove contaminants.
  - 4) Mask areas adjacent to joint opening sufficiently to keep epoxy off deck surface.
  - 5) Apply epoxy to joint opening side surfaces.
  - 6) While epoxy is still tacky, remove shrink wrap from seal and install in joint opening.
  - 7) Recess top of joint seal 1/2" in travel lanes and 1/4" in shoulders.
  - 8) Inject silicone adhesive along top interface of seal with joint side surface. Tool to spread adhesive as necessary.

**CONSTRUCTION NOTES:**  
 Clean and prepare seal cavity for seal installation as per the Manufacturer's installation procedures. Splice and install seal in accordance with the Manufacturer's directions and with the adhesive provided by the Manufacturer. Extend sealant up into rail or curb 4 inches on low side or sides of deck.

**GENERAL NOTES:**  
 Provide pre-compressed silicone and foam hybrid joint seal in the size and at locations shown on the plans. Payment is based on the length of seal placed and in accordance with Item 438, "Cleaning and Sealing Joints."



**JOINT SEALANT TERMINATION DETAILS**



P.E. SEAL REQUIRED  
**PRELIMINARY**  
 SUBJECT TO REVISION  
 This document is released for informational purposes under the authority of XXX XXX  
 P.E. XXXXX on XX/XX/XX.  
 It is not to be used for regulatory approval, permit, bidding, or construction purposes.

Texas Department of Transportation  
 Bridge Division

**PRECOMPRESSED FOAM EXPANSION JOINT SEAL**

(Not to be used as a standard)  
**NBI: XX-XXX-XXXX-XX-XXX**

FILE: WD-PFEJ-24.dgn	DN: TxDOT	CK: TxDOT	DW: TxDOT	CK: TxDOT
©TxDOT February 2024	CONT	SECT	JOB	HIGHWAY
REVISIONS				
09-24: Added manufacture.	DIST	COUNTY		SHEET NO.