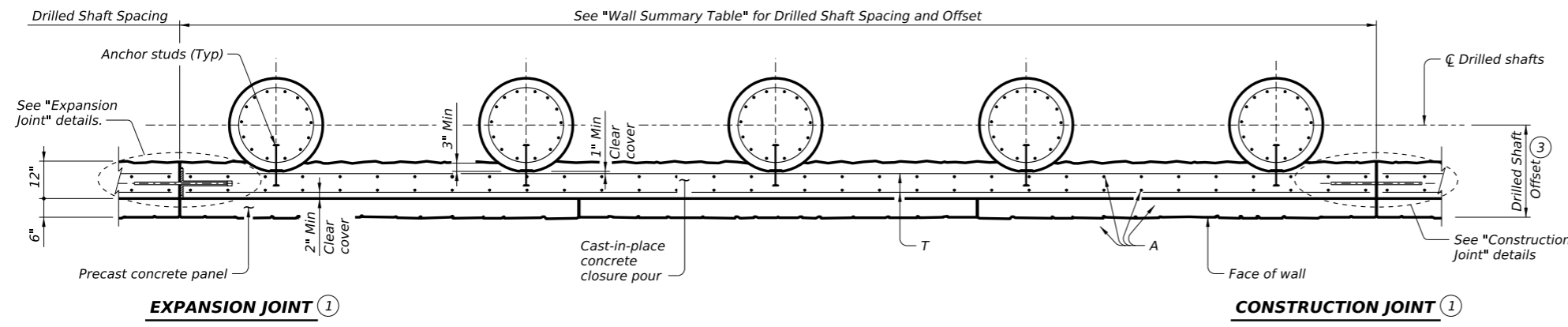
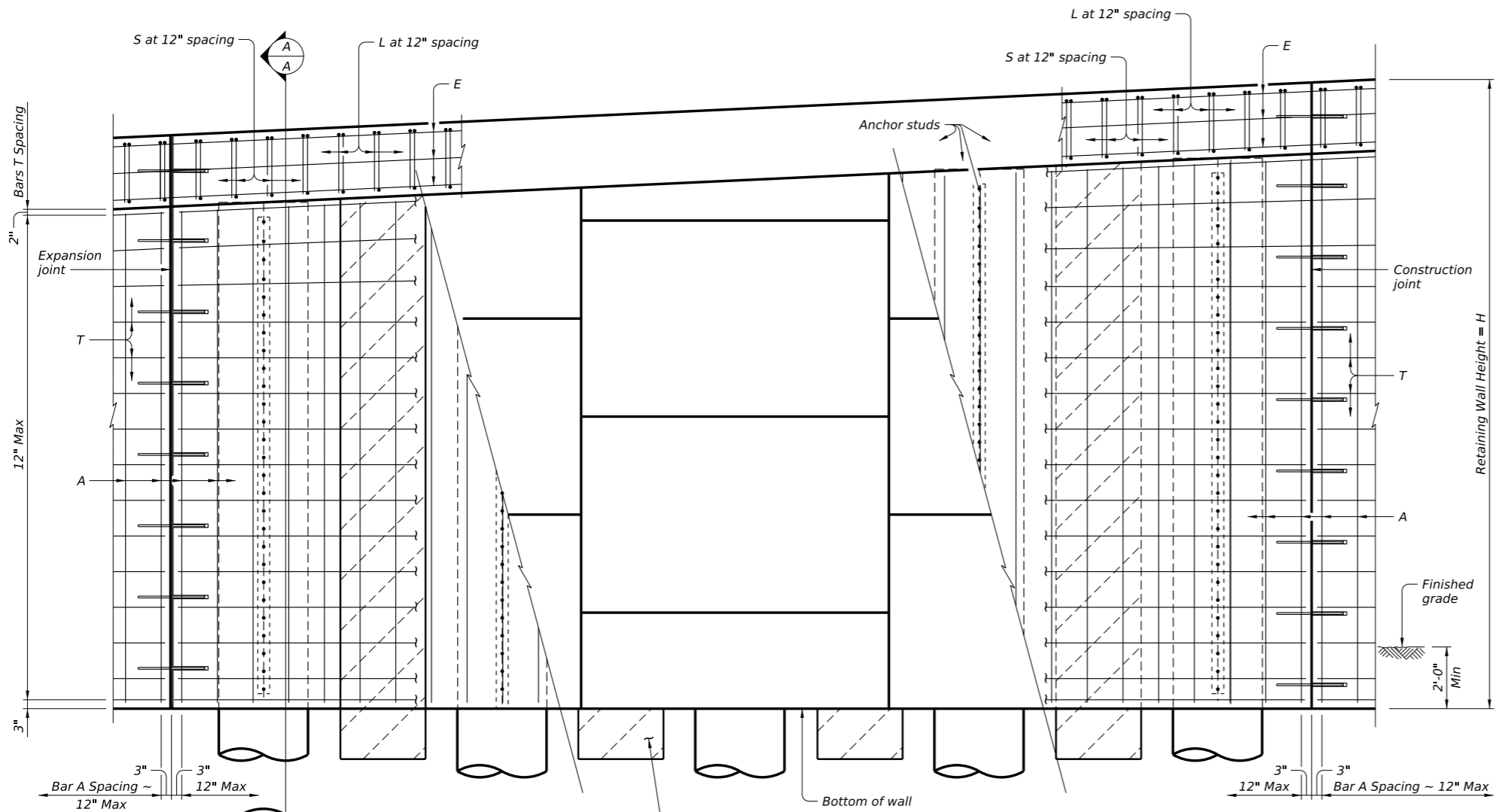


DISCLAIMER: The use of this standard is governed by the "Texas Engineering Practice Act". No warranty of any kind is made by TxDOT for any purpose whatsoever. TxDOT assumes no responsibility for the conversion of this standard to other formats or incorrect results or damages resulting from its use.

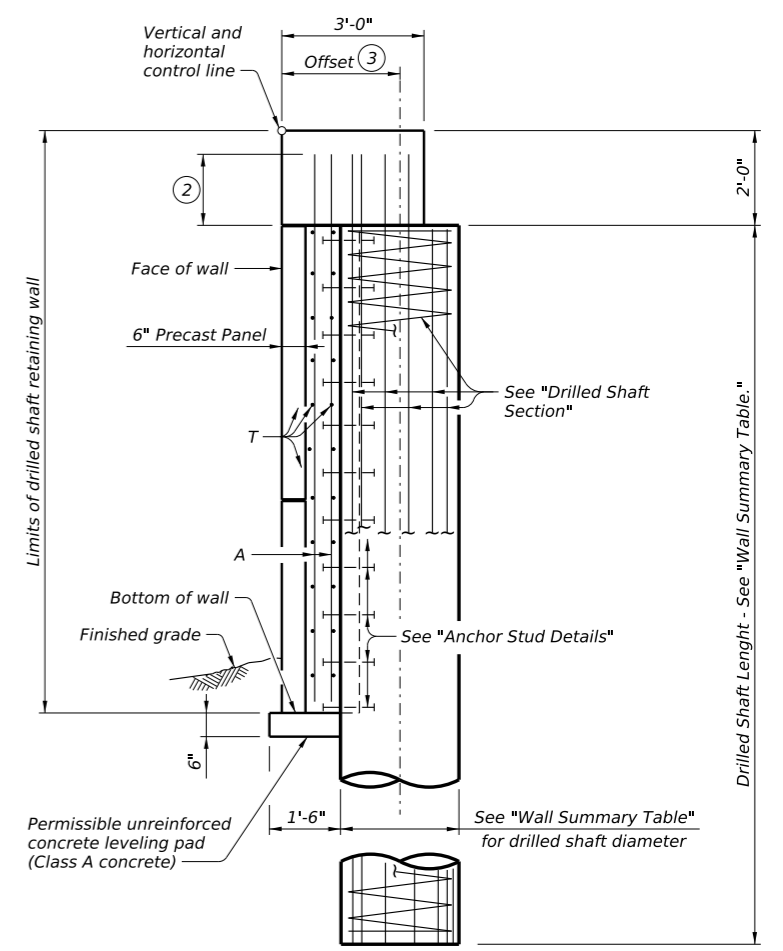
DATE:
FILE:



PLAN
Cap not shown for clarity.



ELEVATION



SECTION A-A

- ① Provide construction joints at 32 feet max spacing and expansion joints at 96 feet max spacing. Alternate construction joints and expansion joints. Align construction and expansion joint from cap to bottom of wall and with the edge of the top precast panel.
- ② Extend drilled shaft vertical bars and closure pour Bars A 1'-6" into cap.
- ③ Measure offset from the control point of wall to the centerline of drilled shaft.

NOTE TO DESIGNER:
These sheets are to be used as a guide for construction of drilled shaft retaining walls. Details with appropriate notes from this guide should be prepared for specific application. This sheet cannot be used without modification. The details shown may need to be amended if the exact existing conditions are not covered. In all cases, details and notes not required must be deleted. This note and the phrase "Not to be used as a standard" must be removed and the sheet must be signed and sealed by a Professional Engineer.

P.E. SEAL
REQUIRED
PRELIMINARY
SUBJECT TO REVISION
This document is released for informational purposes under the authority of
XXX XXX
P.E. XXXXX on XX/XX/XX.
It is not to be used for regulatory approval, permit, bidding, or construction purposes.

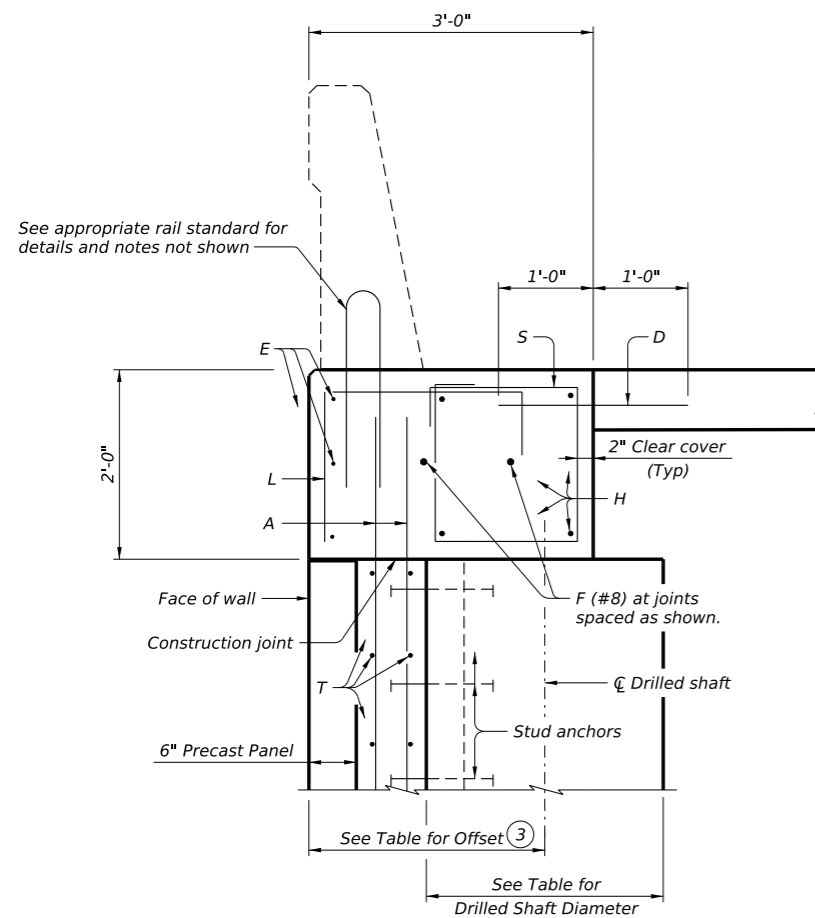
SHEET 1 OF 3

		Bridge Division Standard	
DRILLED SHAFT RETAINING WALL DETAILS (Not to be used as a standard) RW(DS)			
FILE: WD-RW(DS)-25.dgn	DN: TxDOT	CK: TxDOT	DW: TxDOT
© TxDOT October 2025	CONT	SECT	JOB
REVISIONS		HIGHWAY	
DIST		COUNTY	
		SHEET NO.	

DISCLAIMER: The use of this standard is governed by the "Texas Engineering Practice Act". No warranty of any kind is made by TxDOT for any purpose whatsoever. TxDOT assumes no responsibility for the conversion of this standard to other formats or for incorrect results or damages resulting from its use.

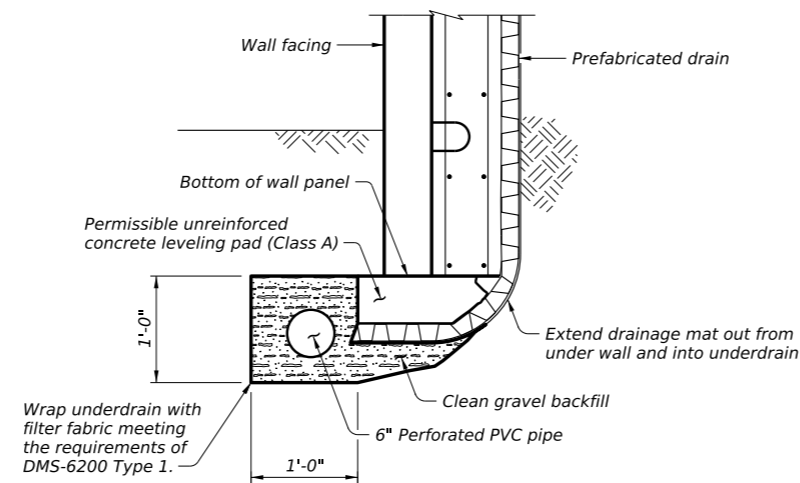
BAR TABLE

BAR	SIZE	SPACING
A	#5	12"
D	#5	12"
E	#4	As Shown
F	#8	12"
H	#6	As Shown
L	#4	12"
S	#4	12"
T	#5	12"



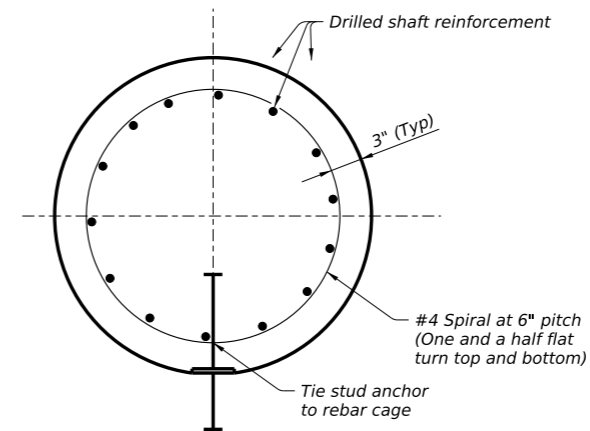
CAP DETAIL

Showing Traffic Rail Single Slope (Type SSSTR); other rails similar.



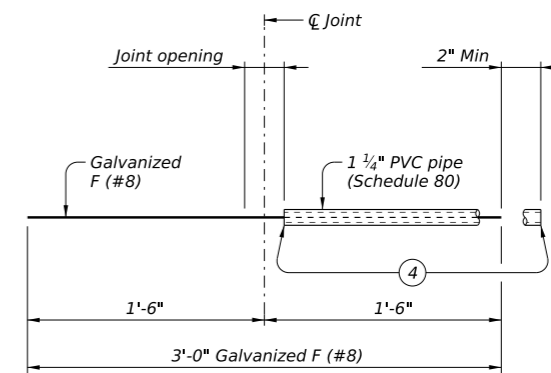
DRAINAGE DETAIL

Engineer to determine the location of the underdrain outfall.

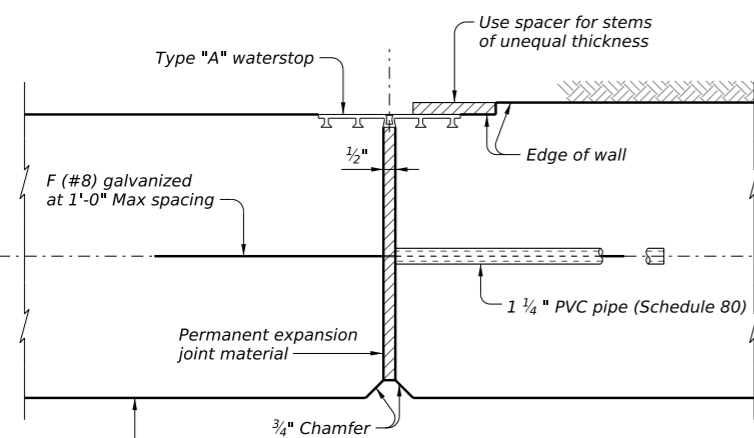


DRILLED SHAFT SECTION

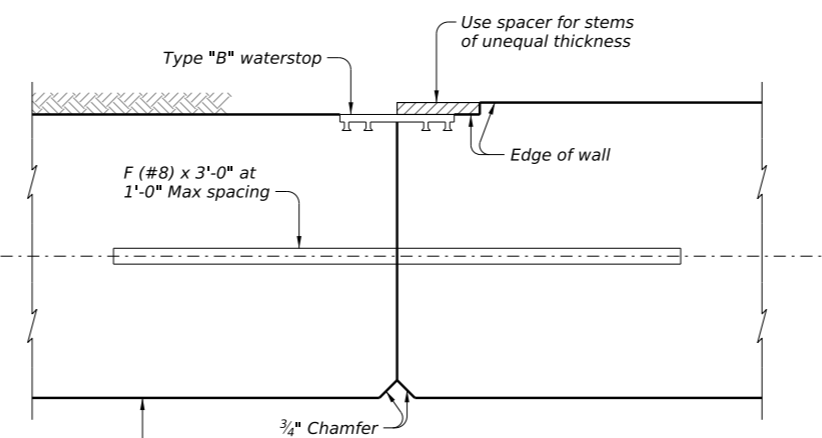
(See Table for number and size of drilled shaft reinforcement.)



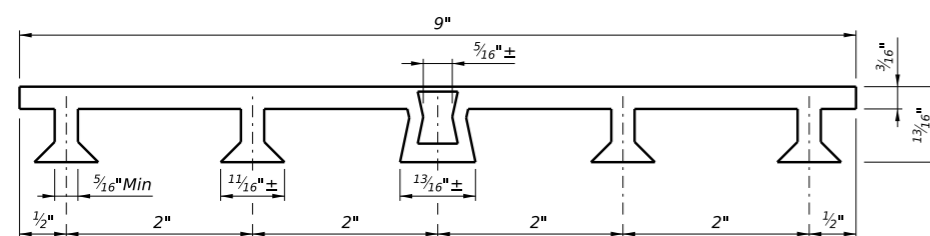
BAR F (#8) ASSEMBLY DETAIL



EXPANSION JOINT

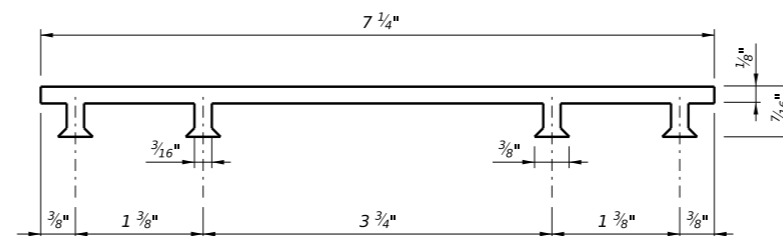


CONSTRUCTION JOINT



PVC WATERSTOP TYPE "A"

Note: Dimensions and shapes may vary slightly depending on manufacturer.



PVC WATERSTOP TYPE "B"

P.E. SEAL REQUIRED
PRELIMINARY

SUBJECT TO REVISION

This document is released for informational purposes under the authority of XXX XXX P.E. XXXXX on XX/XX/XX. It is not to be used for regulatory approval, permit, bidding, or construction purposes.

SHEET 2 OF 3



DRILLED SHAFT RETAINING WALL DETAILS

(Not to be used as a standard)

RW(DS)

FILE: WD-RW(DS)-25.dgn	DN: TxDOT	CK: TxDOT	DW: TxDOT	CK: TxDOT
© TxDOT October 2025	CONT	SECT	JOB	HIGHWAY
REVISIONS	COUNTY		SHEET NO.	

DATE: FILE:

