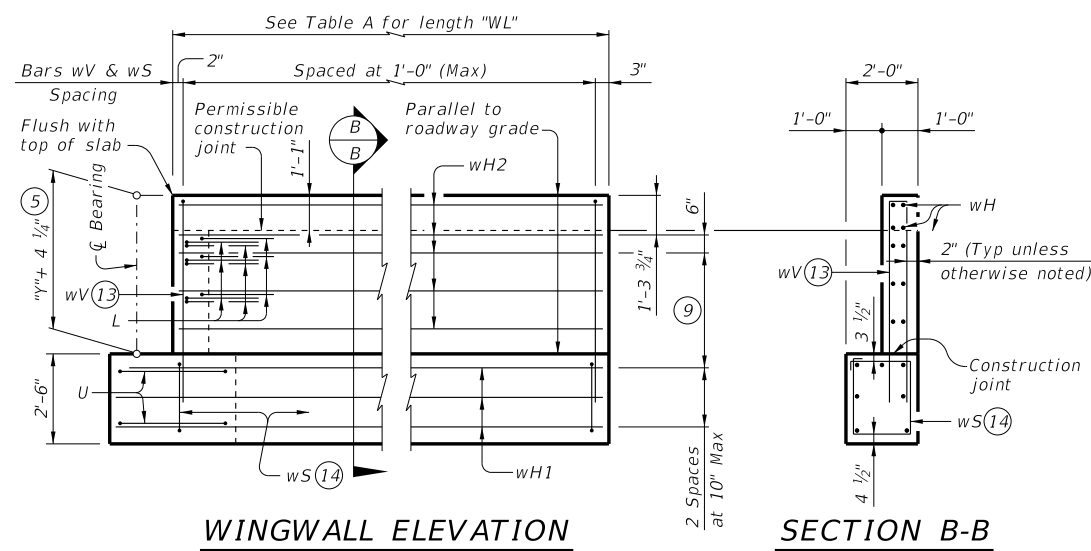
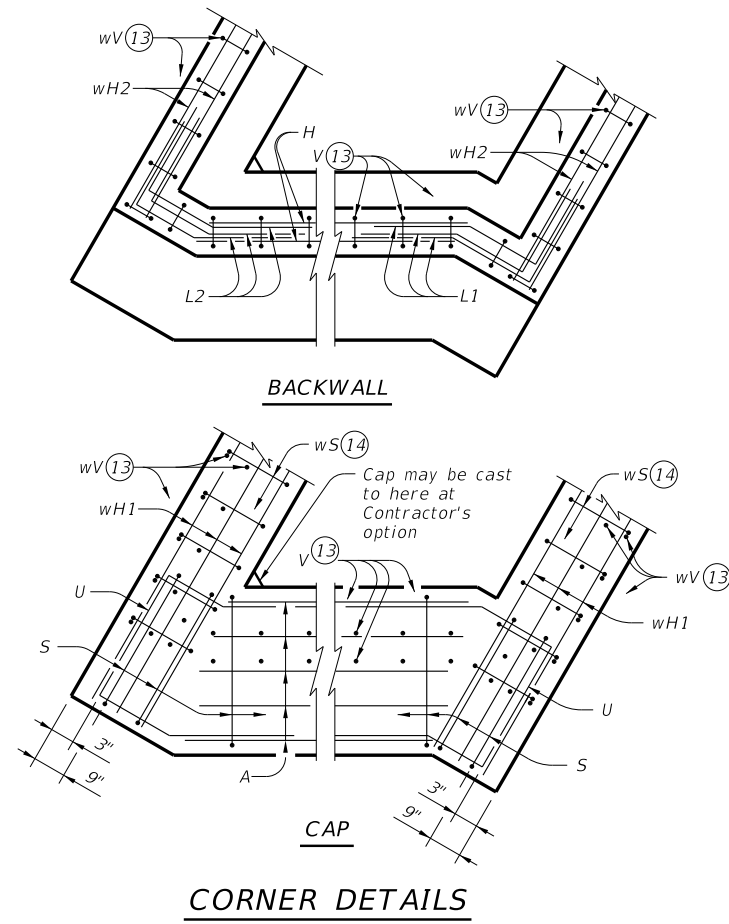


DISCLAIMER: The use of this standard is governed by the "Texas Engineering Practice Act." No warranty of any kind is made by TxDOT for any purpose whatsoever. TxDOT assumes no responsibility for the conversion of this standard to other formats or for incorrect results or damages resulting from its use.



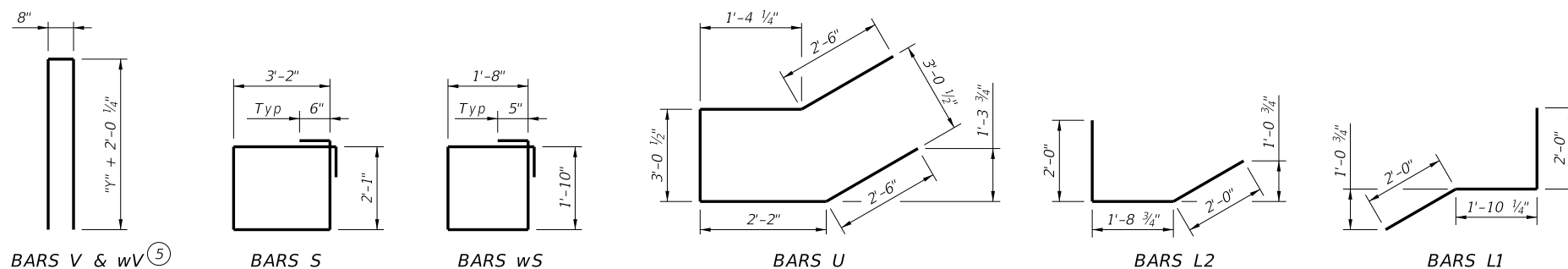
TABLES OF ESTIMATED QUANTITIES WITH 2:1 HEADER SLOPE (15)

TYPE 5XB20 BEAMS					TYPE 5XB28 BEAMS					TYPE 5XB34 BEAMS					TYPE 5XB40 BEAMS								
Bar	No.	Size	Length	Weight	Bar	No.	Size	Length	Weight	Bar	No.	Size	Length	Weight	Bar	No.	Size	Length	Weight				
A	11	#11	41'-7"	2,430	A	11	#11	41'-7"	2,430	A	11	#11	41'-7"	2,430	A	11	#11	41'-7"	2,430				
D(7)	2	#9	1'-8"	11	D(7)	2	#9	1'-8"	11	D(7)	2	#9	1'-8"	11	D(7)	2	#9	1'-8"	11				
H	6	#6	41'-7"	375	H	8	#6	41'-7"	500	H	8	#6	41'-7"	500	H	8	#6	41'-7"	500				
L1	9	#6	5'-11"	80	L1	9	#6	5'-11"	80	L1	9	#6	5'-11"	80	L1	9	#6	5'-11"	80				
L2	9	#6	5'-9"	78	L2	9	#6	5'-9"	78	L2	9	#6	5'-9"	78	L2	9	#6	5'-9"	78				
S	40	#5	11'-6"	480	S	40	#5	11'-6"	480	S	40	#5	11'-6"	480	S	40	#5	11'-6"	480				
U	4	#6	11'-7"	70	U	4	#6	11'-7"	70	U	4	#6	11'-7"	70	U	4	#6	11'-7"	70				
V	45	#5	10'-0"	469	V	45	#5	11'-5"	536	V	45	#5	12'-5"	583	V	45	#5	13'-5"	630				
wH1	14	#6	10'-5"	219	wH1	14	#6	11'-5"	240	wH1	14	#6	12'-5"	261	wH1	14	#6	13'-5"	282				
wH2	16	#6	8'-8"	208	wH2	20	#6	9'-8"	290	wH2	20	#6	10'-8"	320	wH2	20	#6	11'-8"	350				
wS	20	#4	7'-10"	105	wS	22	#4	7'-10"	115	wS	24	#4	7'-10"	126	wS	26	#4	7'-10"	136				
wV	20	#5	10'-0"	209	wV	22	#5	11'-5"	262	wV	24	#5	12'-5"	311	wV	26	#5	13'-5"	364				
Reinforcing Steel				Lb	4,734	Reinforcing Steel				Lb	5,092	Reinforcing Steel				Lb	5,250	Reinforcing Steel				Lb	5,411
Class "C" Concrete				CY	22.8	Class "C" Concrete				CY	25.0	Class "C" Concrete				CY	26.9	Class "C" Concrete				CY	28.8

TABLES OF ESTIMATED QUANTITIES WITH 3:1 HEADER SLOPE (15)

TYPE 5XB20 BEAMS					TYPE 5XB28 BEAMS					TYPE 5XB34 BEAMS					TYPE 5XB40 BEAMS								
Bar	No.	Size	Length	Weight	Bar	No.	Size	Length	Weight	Bar	No.	Size	Length	Weight	Bar	No.	Size	Length	Weight				
A	11	#11	41'-7"	2,430	A	11	#11	41'-7"	2,430	A	11	#11	41'-7"	2,430	A	11	#11	41'-7"	2,430				
D(7)	2	#9	1'-8"	11	D(7)	2	#9	1'-8"	11	D(7)	2	#9	1'-8"	11	D(7)	2	#9	1'-8"	11				
H	6	#6	41'-7"	375	H	8	#6	41'-7"	500	H	8	#6	41'-7"	500	H	8	#6	41'-7"	500				
L1	9	#6	5'-11"	80	L1	9	#6	5'-11"	80	L1	9	#6	5'-11"	80	L1	9	#6	5'-11"	80				
L2	9	#6	5'-9"	78	L2	9	#6	5'-9"	78	L2	9	#6	5'-9"	78	L2	9	#6	5'-9"	78				
S	40	#5	11'-6"	480	S	40	#5	11'-6"	480	S	40	#5	11'-6"	480	S	40	#5	11'-6"	480				
U	4	#6	11'-7"	70	U	4	#6	11'-7"	70	U	4	#6	11'-7"	70	U	4	#6	11'-7"	70				
V	45	#5	10'-0"	469	V	45	#5	11'-5"	536	V	45	#5	12'-5"	583	V	45	#5	13'-5"	630				
wH1	14	#6	13'-5"	282	wH1	14	#6	16'-5"	345	wH1	14	#6	17'-5"	366	wH1	14	#6	19'-5"	408				
wH2	16	#6	11'-8"	280	wH2	20	#6	14'-8"	441	wH2	20	#6	15'-8"	471	wH2	20	#6	17'-8"	531				
wS	26	#4	7'-10"	136	wS	32	#4	7'-10"	167	wS	34	#4	7'-10"	178	wS	38	#4	7'-10"	199				
wV	26	#5	10'-0"	271	wV	32	#5	11'-5"	381	wV	34	#5	12'-5"	440	wV	38	#5	13'-5"	532				
Reinforcing Steel				Lb	4,962	Reinforcing Steel				Lb	5,519	Reinforcing Steel				Lb	5,687	Reinforcing Steel				Lb	5,949
Class "C" Concrete				CY	24.6	Class "C" Concrete				CY	28.1	Class "C" Concrete				CY	30.3	Class "C" Concrete				CY	33.1

- (5) See Span Details for "Y" value.
- (7) Omit Dowels D at end of multi-span unit. Adjust reinforcing steel total accordingly.
- (9) Spacing based on beam type:
 XB20 ~ 2 spaces at 1'-0" Max
 XB28 ~ 3 spaces at 1'-0" Max
 XB34 ~ 3 spaces at 1'-0" Max
 XB40 ~ 3 spaces at 1'-0" Max
- (13) Field bend as needed to clear piles.
- (14) Adjust as required to avoid piling.
- (15) Quantities shown are for one abutment only (with approach slab.) With no approach slab, add 1.7 CY Class C concrete and 250 lbs of reinforcing steel for 4 additional H bars.



ABUTMENTS
PRESTR CONC X-BEAMS
 (TYPE 5XB20 THROUGH 5XB40)
 38' ROADWAY 30° SKEW
AXB-38-30

FILE: XB-AXB3830-22.dgn	DN: BMP	CK: EFC	DW: JER	CK: BMP
©TxDOT August 2022	CONT	SECT	JOB	HIGHWAY
REVISIONS	DIST	COUNTY	SHEET NO.	

DATE: FILE: