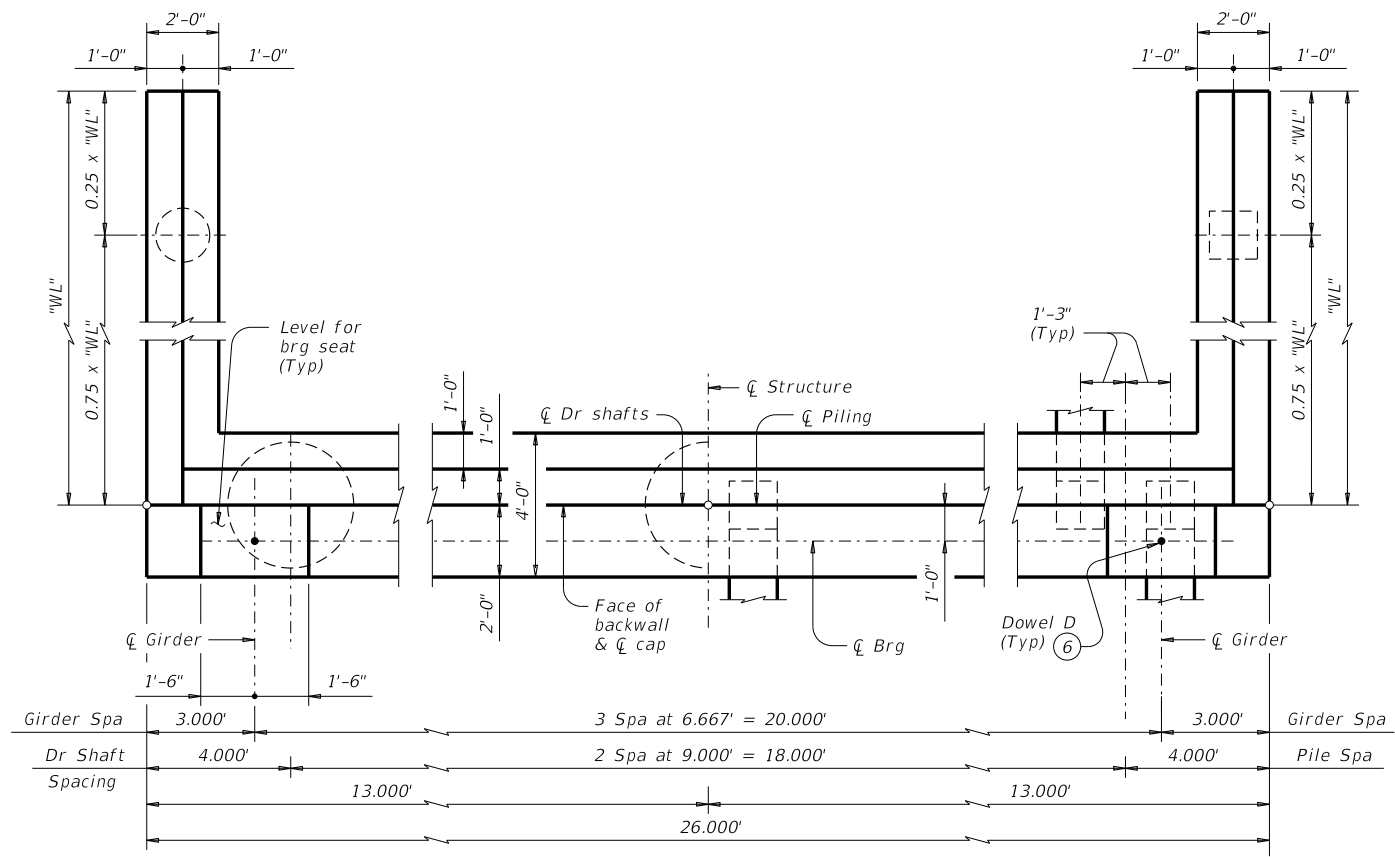
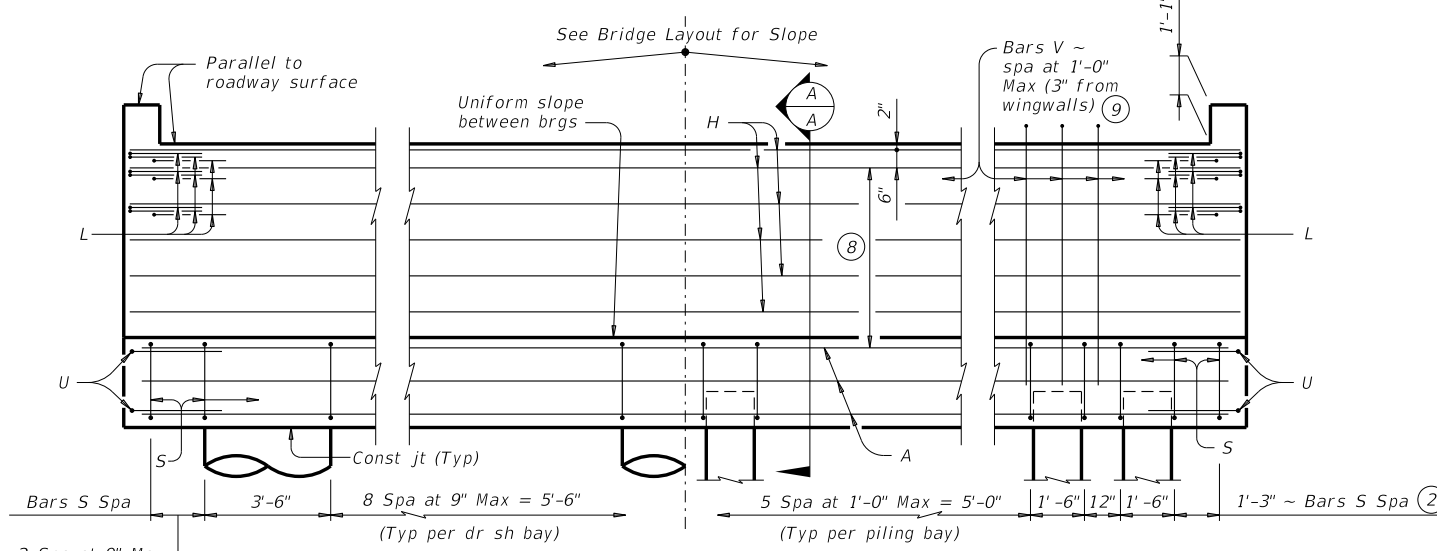


DISCLAIMER: The use of this standard is governed by the "Texas Engineering Practice Act". No warranty of any kind is made by TxDOT for any purpose whatsoever. TxDOT assumes no responsibility for the conversion of this standard to other formats or for incorrect results or damages resulting from its use.

DATE: FILE:

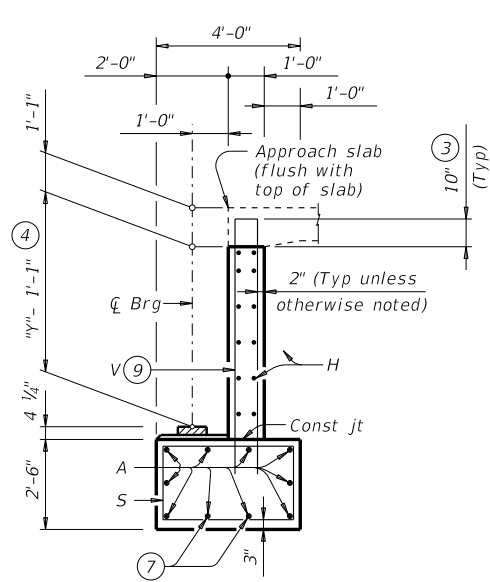


SHOWING DRILLED SHAFTS PLAN 1 SHOWING PILES

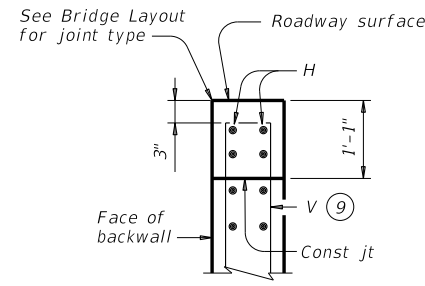


SHOWING DRILLED SHAFTS ELEVATION SHOWING PILES

Header Slope	Girder Type	Wingwall Type	Wingwall Lgth "WL"
2:1	Tx62	Founded	14.000'
3:1	Tx62	Founded	20.000'



SECTION A-A



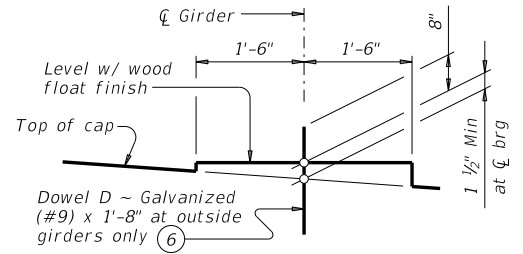
BACKWALL DETAIL

- 1 See Table A for variable dimensions based on header slope.
- 2 For piling larger than 16" adjust Bars S spacing as required to avoid piling.
- 3 Increase as required to maintain 3" from finished grade.
- 4 See Span details for "y" value.
- 5 See Bridge Layout to determine if approach slab is present.
- 6 Omit Dowels D at end of multi-span unit. Adjust reinforcing steel total accordingly.
- 7 With pile foundations, move Bars A shown to clear piles.
- 8 5 Spaces at 1'-0" Max.
- 9 Field bend as needed to clear piles.

GENERAL NOTES:
 Designed according to AASHTO LRFD Bridge Design Specifications.
 See Bridge Layout for header slope and foundation type, size and length.
 See Common Foundation Details (FD) standard sheet for all foundation details and notes.
 See Concrete Riprap (CRR) standard sheet or Stone Riprap (SRR) standard sheet for riprap attachment details, if applicable.
 See applicable rail details for rail anchorage in wingwalls.
 These abutment details may be used with standard SIG-62-24 only.

Cover dimensions are clear dimensions, unless noted otherwise.
 Reinforcing bar dimensions shown are out-to-out of bar.

MATERIAL NOTES:
 Provide Class C concrete (f'c = 3,600 psi).
 Provide Class C (HPC) concrete if shown elsewhere in the plans.
 Provide Grade 60 reinforcing steel.
 Galvanize dowel bars D.



BEARING SEAT DETAIL

(Bearing surface must be clean and free of all loose material before placing bearing pad.)

Span Length Ft	Girder Type Tx62	
	Tons/Shaft	Tons/Pile
60	84	67
65	88	69
70	92	71
75	96	73
80	100	75
85	104	77
90	108	79
95	112	81
100	116	83
105	120	85
110	124	87
115	128	89
120	132	91
125	136	93
130	140	95
135	143	97



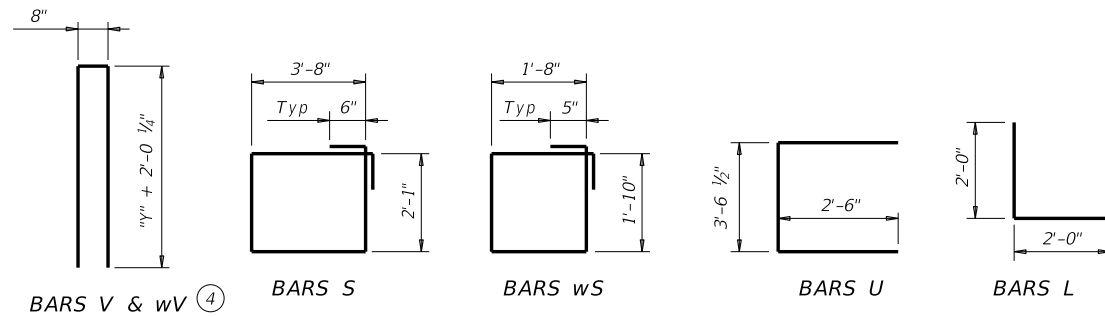
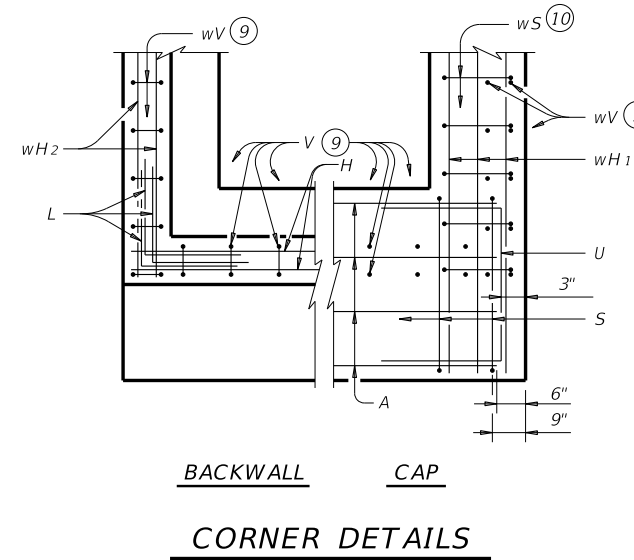
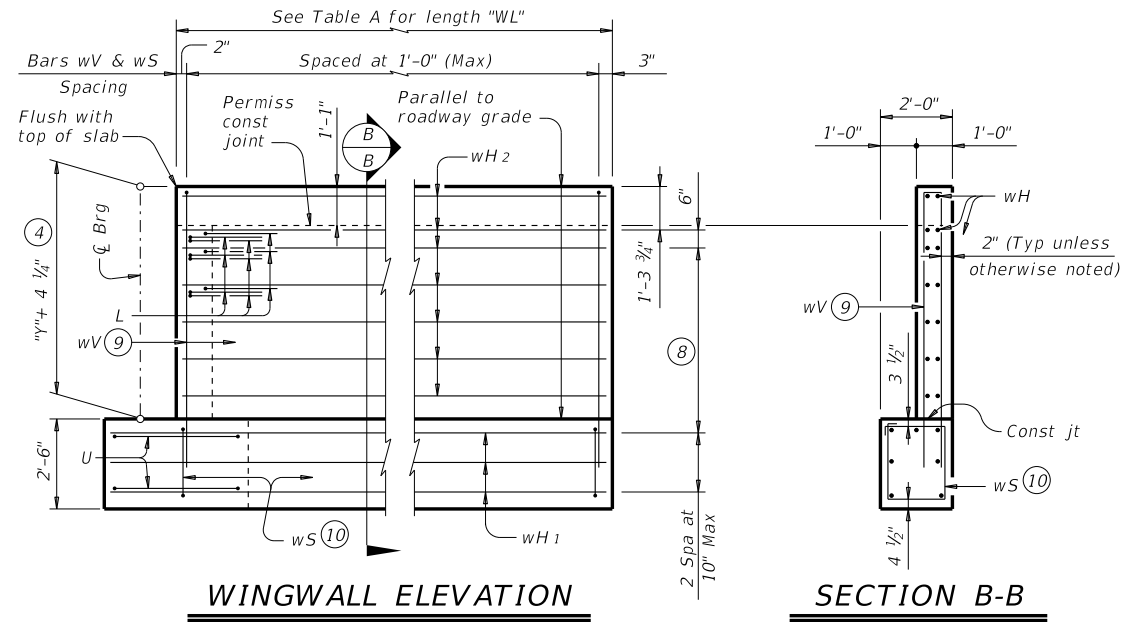
**ABUTMENTS
 TYPE TX62
 PRESTR CONC I-GIRDERS
 24' ROADWAY**

AIG-62-24

FILE: aig21sts-17.dgn	DN: TAR	CK: KCM	DW: JTR	CK: TAR
©TxDOT August 2017	CONT	SECT	JOB	HIGHWAY
REVISIONS				
	DIST	COUNTY		SHEET NO.

DISCLAIMER: The use of this standard is governed by the "Texas Engineering Practice Act". No warranty of any kind is made by TxDOT for any purpose whatsoever. TxDOT assumes no responsibility for the conversion of this standard to other formats or for incorrect results or damages resulting from its use.

DATE:
FILE:



- ④ See Span details for "y" value.
- ⑥ Omit Dowels D at end of multi-span unit. Adjust reinforcing steel total accordingly.
- ⑧ 5 Spaces at 1'-0" Max.
- ⑨ Field bend as needed to clear piles.
- ⑩ Adjust as required to avoid piling.
- ⑪ Quantities shown are for one abutment only (with approach slab). With no approach slab, add 1.0 CY Class "C" concrete and 154 lbs reinforcing steel for 4 additional Bars H.

TABLE OF ESTIMATED QUANTITIES WITH 2:1 HEADER SLOPE ⑪

TYPE Tx62 Girders				
Bar	No.	Size	Length	Weight
A	10	#11	25'-0"	1,328
D⑥	2	#9	1'-8"	11
H	12	#6	25'-8"	463
L	18	#6	4'-0"	108
S	24	#5	12'-6"	313
U	4	#6	8'-7"	52
V	25	#5	17'-0"	443
wH1	14	#6	15'-8"	329
wH2	28	#6	13'-8"	575
wS	30	#4	7'-10"	157
wV	30	#5	17'-0"	532
Reinforcing Steel			Lb	4,311
Class "C" Concrete			CY	25.7

TABLE OF ESTIMATED QUANTITIES WITH 3:1 HEADER SLOPE ⑪

TYPE Tx62 Girders				
Bar	No.	Size	Length	Weight
A	10	#11	25'-0"	1,328
D⑥	2	#9	1'-8"	11
H	12	#6	25'-8"	463
L	18	#6	4'-0"	108
S	24	#5	12'-6"	313
U	4	#6	8'-7"	52
V	25	#5	17'-0"	443
wH1	14	#6	21'-8"	456
wH2	28	#6	19'-8"	827
wS	42	#4	7'-10"	220
wV	42	#5	17'-0"	745
Reinforcing Steel			Lb	4,966
Class "C" Concrete			CY	30.8

HL93 LOADING

SHEET 2 OF 2



**ABUTMENTS
TYPE TX62
PRESTR CONC I-GIRDERS
24' ROADWAY**

AIG-62-24

FILE: aig21sts-17.dgn	DN: TAR	CK: KCM	DW: JTR	CK: TAR
©TxDOT August 2017	CONT	SECT	JOB	HIGHWAY
REVISIONS	DIST			COUNTY
				SHEET NO.