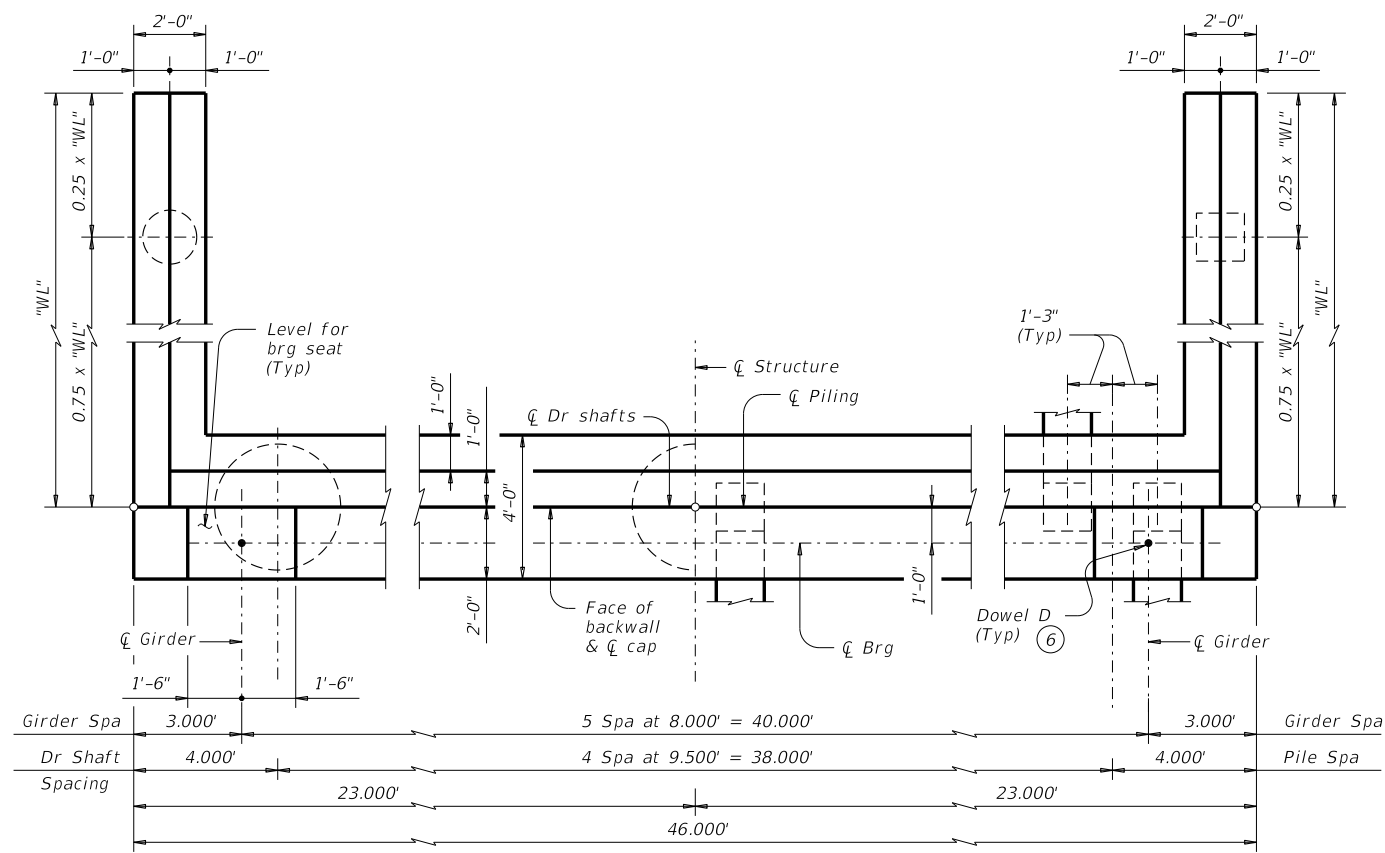
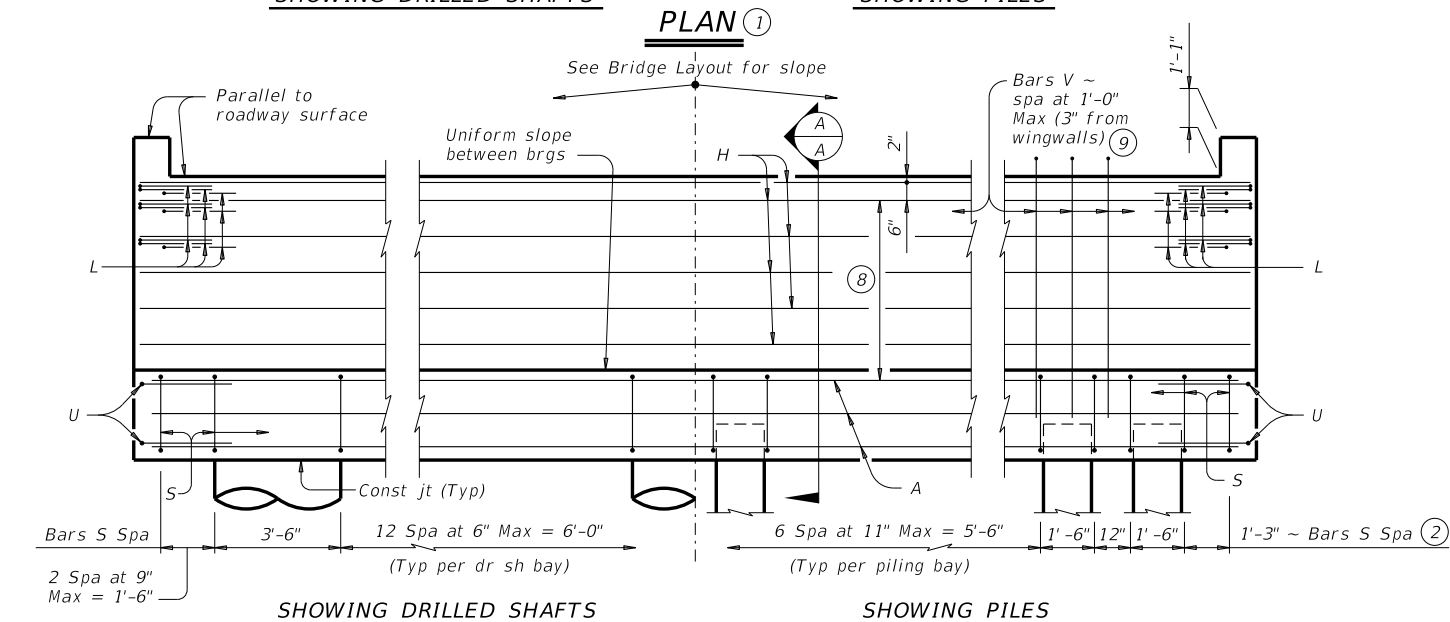


DISCLAIMER: The use of this standard is governed by the "Texas Engineering Practice Act". No warranty of any kind is made by TxDOT for any purpose whatsoever. TxDOT assumes no responsibility for the conversion of this standard to other formats or for incorrect results or damages resulting from its use.

DATE: FILE:

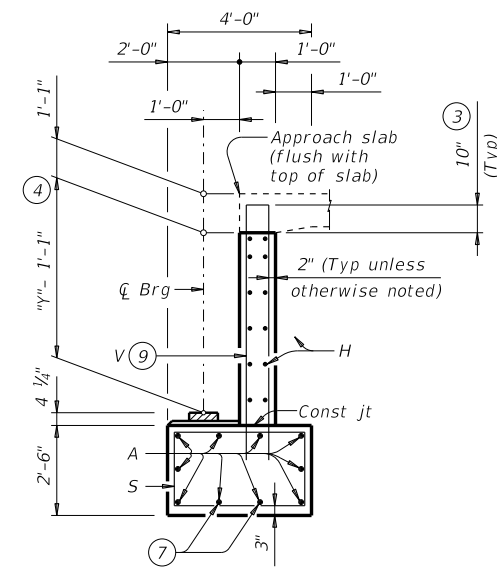


SHOWING DRILLED SHAFTS PLAN 1 SHOWING PILES



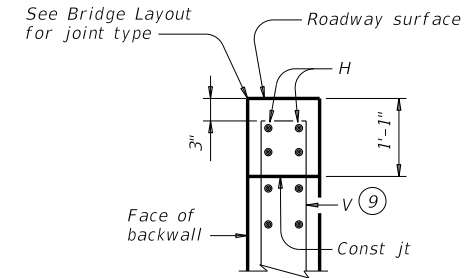
SHOWING DRILLED SHAFTS ELEVATION SHOWING PILES

Header Slope	Girder Type	Wingwall Type	Wingwall Lgth "WL"
2:1	Tx62	Founded	14.000'
3:1	Tx62	Founded	20.000'



SECTION A-A

(With approach slab) 5



BACKWALL DETAIL

(Without approach slab) 5

- See Table A for variable dimensions based on header slope.
- For piling larger than 16" adjust Bars S spacing as required to avoid piling.
- Increase as required to maintain 3" from finished grade.
- See Span details for "Y" value.
- See Bridge Layout to determine if approach slab is present.
- Omit Dowels D at end of multi-span unit. Adjust reinforcing steel total accordingly.
- With pile foundations, move Bars A shown to clear piles.
- 5 Spaces at 1'-0" Max
- Field bend as needed to clear piles.

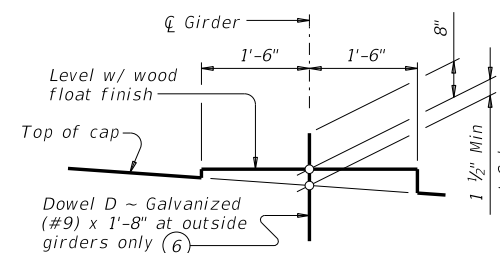
GENERAL NOTES:

Designed according to AASHTO LRFD Bridge Design Specifications.  
See Bridge Layout for header slope and foundation type, size and length.  
See Common Foundation Details (FD) standard sheet for all foundation details and notes.  
See Concrete Riprap (CRR) standard sheet or Stone Riprap (SRR) standard sheet for riprap attachment details, if applicable.  
See applicable rail details for rail anchorage in wingwalls.  
These abutment details may be used with standard SIG-62-44 only.

Cover dimensions are clear dimensions, unless noted otherwise.  
Reinforcing bar dimensions shown are out-to-out of bar.

MATERIAL NOTES:

Provide Class C concrete ( $f'c = 3,600$  psi).  
Provide Class C (HPC) concrete if shown elsewhere in the plans.  
Provide Grade 60 reinforcing steel.  
Galvanize dowel bars D.



BEARING SEAT DETAIL

(Bearing surface must be clean and free of all loose material before placing bearing pad.)

TABLE OF FOUNDATION LOADS

Span Length	Girder Type Tx62	
	Tons/Shaft	Tons/Pile
60	73	62
65	77	64
70	80	66
75	84	68
80	88	70
85	91	72
90	95	73
95	98	75
100	102	77
105	106	79
110	109	81
115	113	83
120	116	84
125	120	86
130	123	88
135	127	90

HL93 LOADING

SHEET 1 OF 2



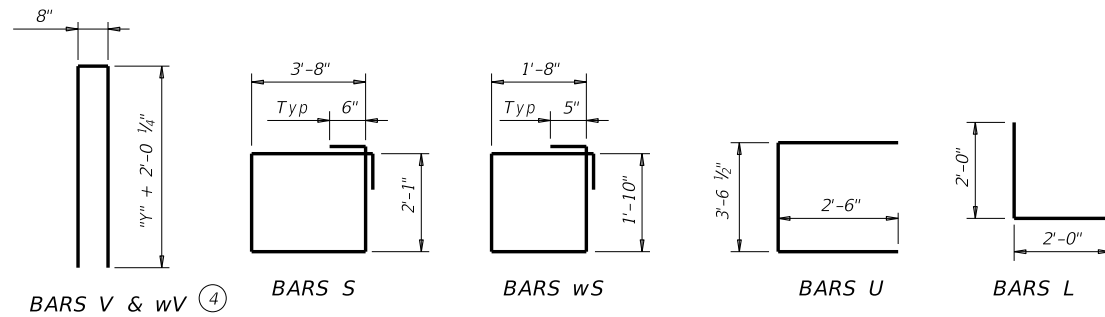
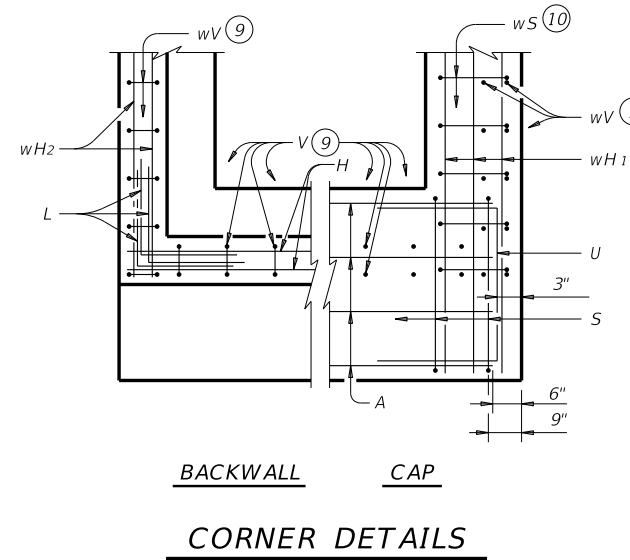
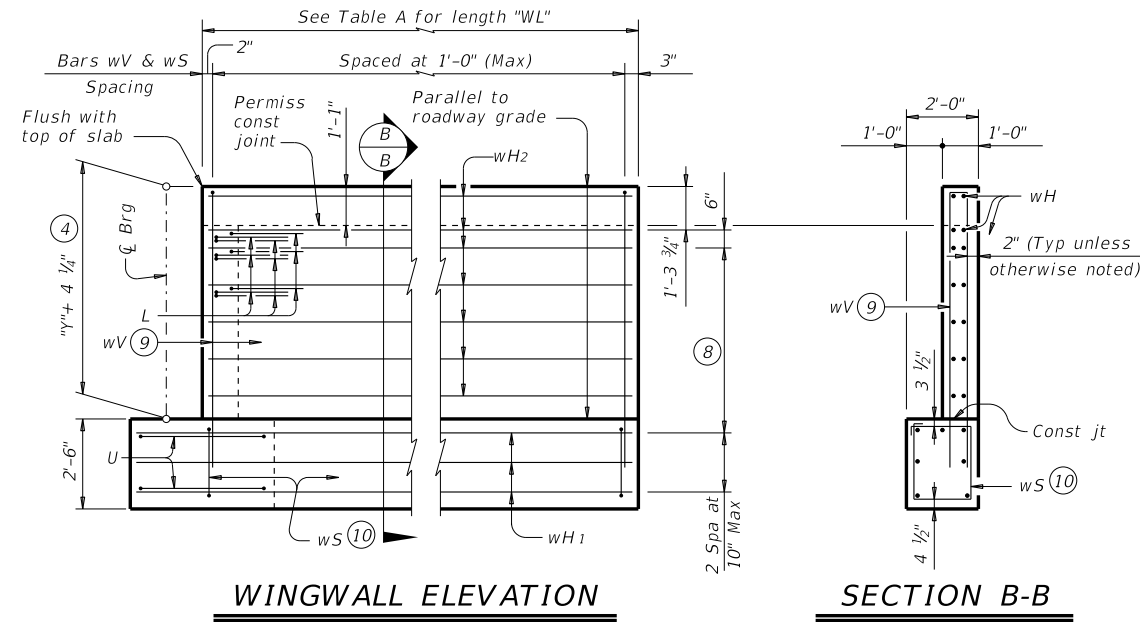
ABUTMENTS  
TYPE TX62  
PRESTR CONC I-GIRDERS  
44' ROADWAY

AIG-62-44

FILE: aig37sts-17.dgn	DN: TAR	CK: KCM	DW: JTR	CK: TAR
©TxDOT August 2017	CONT	SECT	JOB	HIGHWAY
REVISIONS				
	DIST	COUNTY		SHEET NO.

DISCLAIMER: The use of this standard is governed by the "Texas Engineering Practice Act". No warranty of any kind is made by TxDOT for any purpose whatsoever. TxDOT assumes no responsibility for the conversion of this standard to other formats or for incorrect results or damages resulting from its use.

DATE:  
FILE:



- ④ See Span details for "y" value.
- ⑥ Omit Dowels D at end of multi-span unit. Adjust reinforcing steel total accordingly.
- ⑧ 5 Spaces at 1'-0" Max.
- ⑨ Field bend as needed to clear piles.
- ⑩ Adjust as required to avoid piling.
- ⑪ Quantities shown are for one abutment only (with approach slab). With no approach slab, add 1.8 CY Class "C" concrete and 274 lbs reinforcing steel for 4 additional Bars H.

TABLE OF ESTIMATED QUANTITIES WITH 2:1 HEADER SLOPE ⑪

TYPE Tx62 Girders					
Bar	No.	Size	Length	Weight	
A	10	#11	45'-0"	2,391	
D ⑥	2	#9	1'-8"	11	
H	12	#6	45'-8"	823	
L	18	#6	4'-0"	108	
S	58	#5	12'-6"	756	
U	4	#6	8'-7"	52	
V	45	#5	17'-0"	798	
wH1	14	#6	15'-8"	329	
wH2	28	#6	13'-8"	575	
wS	30	#4	7'-10"	157	
wV	30	#5	17'-0"	532	
Reinforcing Steel				Lb	6,532
Class "C" Concrete				CY	37.2

TABLE OF ESTIMATED QUANTITIES WITH 3:1 HEADER SLOPE ⑪

TYPE Tx62 Girders					
Bar	No.	Size	Length	Weight	
A	10	#11	45'-0"	2,391	
D ⑥	2	#9	1'-8"	11	
H	12	#6	45'-8"	823	
L	18	#6	4'-0"	108	
S	58	#5	12'-6"	756	
U	4	#6	8'-7"	52	
V	45	#5	17'-0"	798	
wH1	14	#6	21'-8"	456	
wH2	28	#6	19'-8"	827	
wS	42	#4	7'-10"	220	
wV	42	#5	17'-0"	745	
Reinforcing Steel				Lb	7,187
Class "C" Concrete				CY	42.3

HL93 LOADING

SHEET 2 OF 2



ABUTMENTS  
TYPE TX62  
PRESTR CONC I-GIRDERS  
44' ROADWAY

AIG-62-44

FILE: aig37sts-17.dgn	DN: TAR	CK: KCM	DW: JTR	CK: TAR
©TxDOT August 2017	CONT	SECT	JOB	HIGHWAY
REVISIONS				
DIST	COUNTY			SHEET NO.