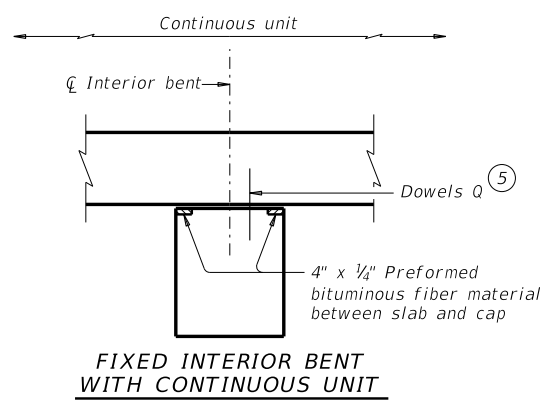
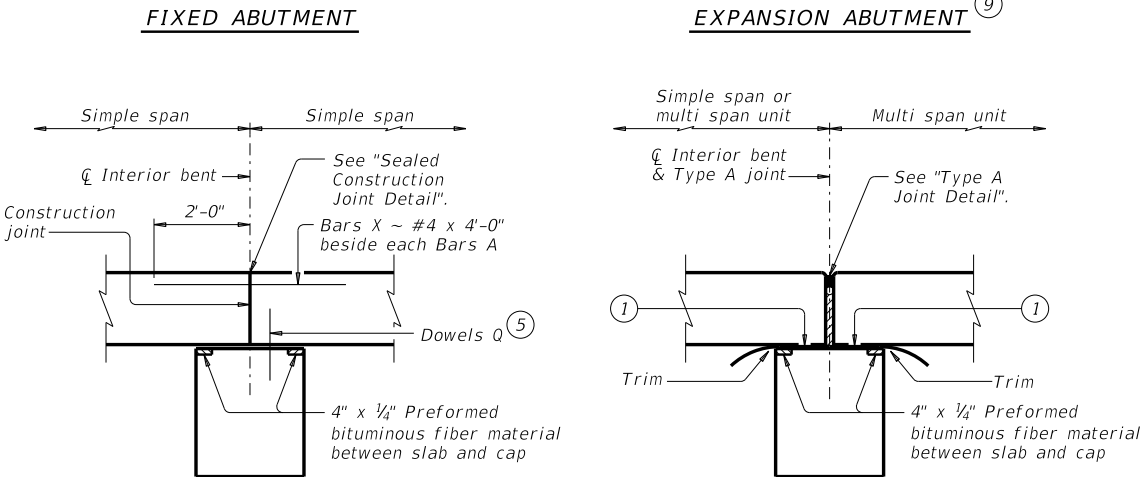
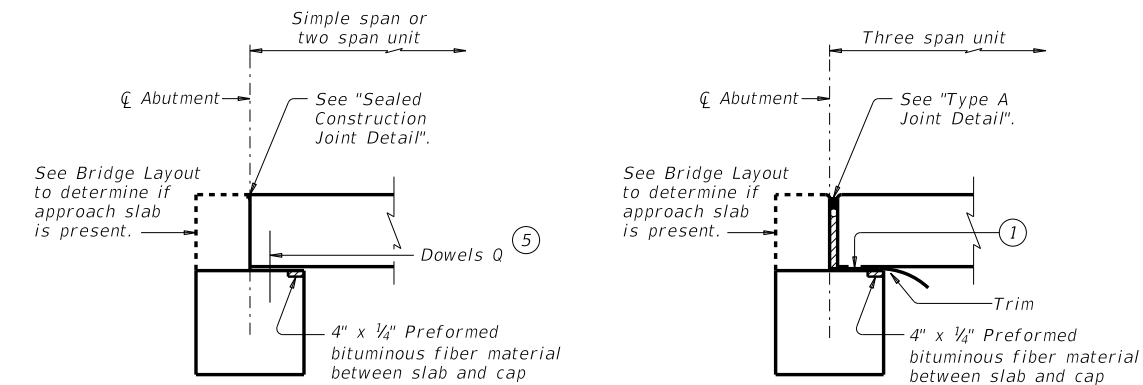
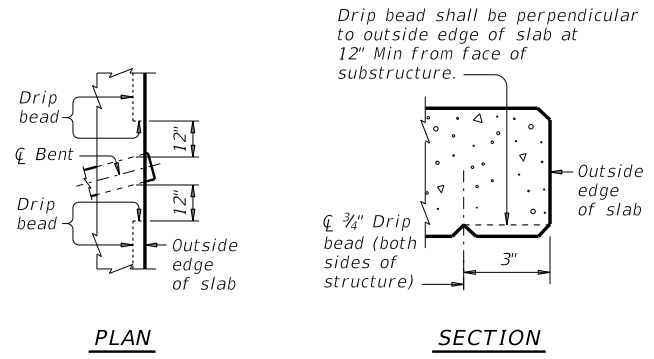
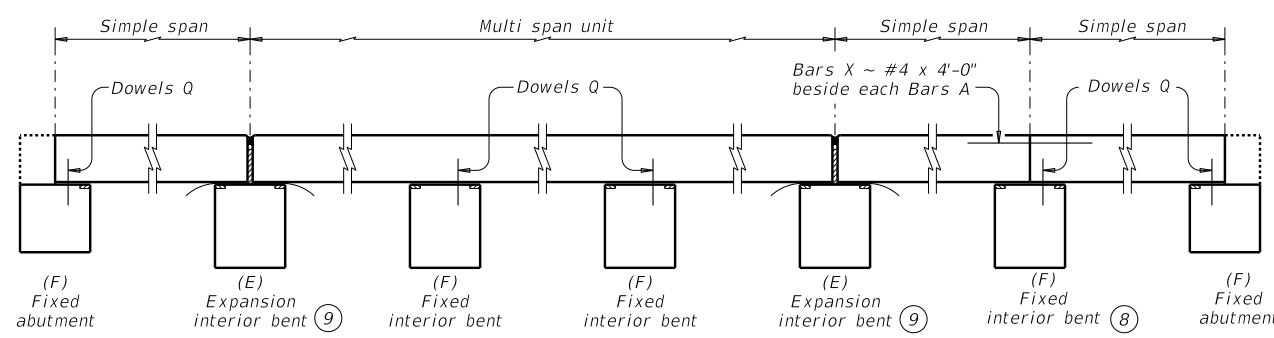
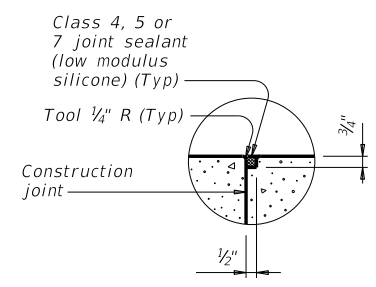
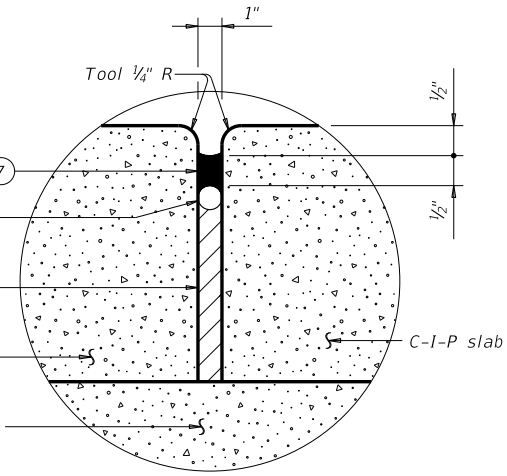
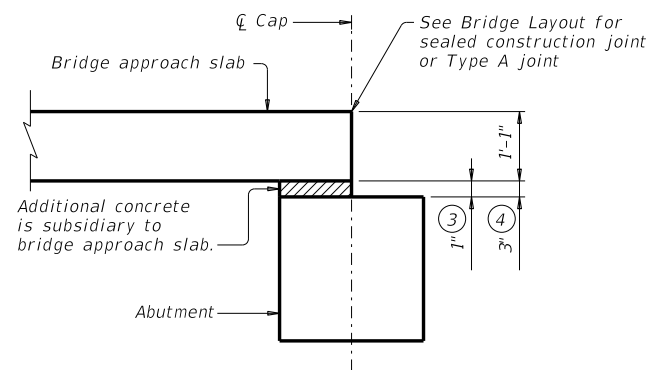
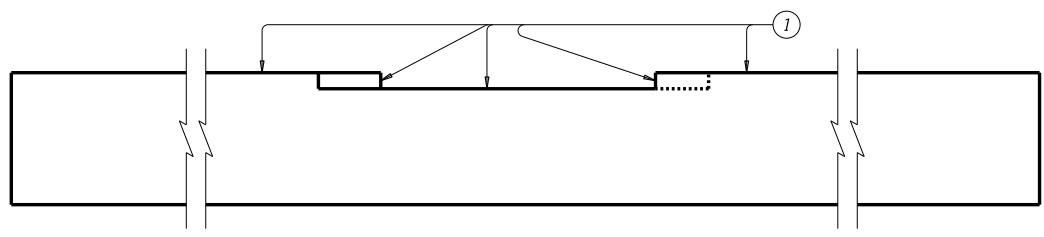


DISCLAIMER: The use of this standard is governed by the "Texas Engineering Practice Act". No warranty of any kind is made by TxDOT for any purpose whatsoever. TxDOT assumes no responsibility for the conversion of this standard to other formats or for incorrect results or damages resulting from its use.

DATE: FILE:



**ELEVATION AT FIXED OR EXPANSION BENTS**



**ADJUSTMENT IN REINFORCING STEEL QUANTITIES**

Rdwy Width	Fixed Condition (8)		Expansion Condition (9)	
	Add Bars X		Deduct Dowel Q	
	Add 2.67 lb/bar		Deduct 2.25 lb/bar	
Ft	No.	Weight	No.	Weight
24	30	+80	5	-11
28	34	+91	5	-11
30	36	+96	5	-11
38	44	+118	5	-11
44	50	+134	5	-11

Note: The above quantities are for the fixed or expansion condition over one bent and are for information only.

- Smooth trowel finish. Oil top of cap with 60 grade oil and apply heavy coat of powdered graphite. Press down one layer of 30# roofing felt.
- See Bridge Layout to determine if approach slab is present.
- Use with 14" slab thickness.
- Use with 16" slab thickness.
- See Abutment or Bent details for location of Dowels Q.
- 1 1/4" backer rod must be compatible with joint sealant. Use of multiple pieces to create a backer rod cross section is not permitted. Top of backer rod must be convex as shown.
- Class 7 silicone sealant that conforms to DMS 6310. Install when ambient temperature is between 55°F and 85°F and rising. Engineer to determine allowable hours for sealant application.
- Bars X required only when 2 simple spans are used together over a fixed interior bent. The use of 3 consecutive simple spans are not recommended nor supported by this standard.
- Omit Dowels Q from expansion bents.
- Recommended location of Type A joints are at the ends of 3 span units, ends of 2 span units supported by an interior bent, and no farther than 2 simple spans from an abutment.

**GENERAL NOTES:**

Designed according to AASHTO LRFD Bridge Specifications. Seal slab construction joints at bent locations with Class 4, 5, or 7 joint sealant (low modulus silicone.) See "Sealed Construction Joint Detail."  
 See Bridge Layout for joint type and location. Provide sealed construction joints or Type A joints.  
 Payment for Type A joints will be as per item 454, "Bridge Expansion Joints."  
 Sealed construction joints are subsidiary to the span. This standard does not support the use of transition bents.

**HL93 LOADING**

Texas Department of Transportation  
 Bridge Division Standard

**MISC DETAILS FOR C-I-P CONC SLAB SPANS**

**CS-MD**

FILE: mcs01ste-21.dgn	DN: TxDOT	CK: TxDOT	DW: TxDOT	CK: TxDOT
©TxDOT July 2021	CONT	SECT	JOB	HIGHWAY
REVISIONS				
	DIST	COUNTY		SHEET NO.