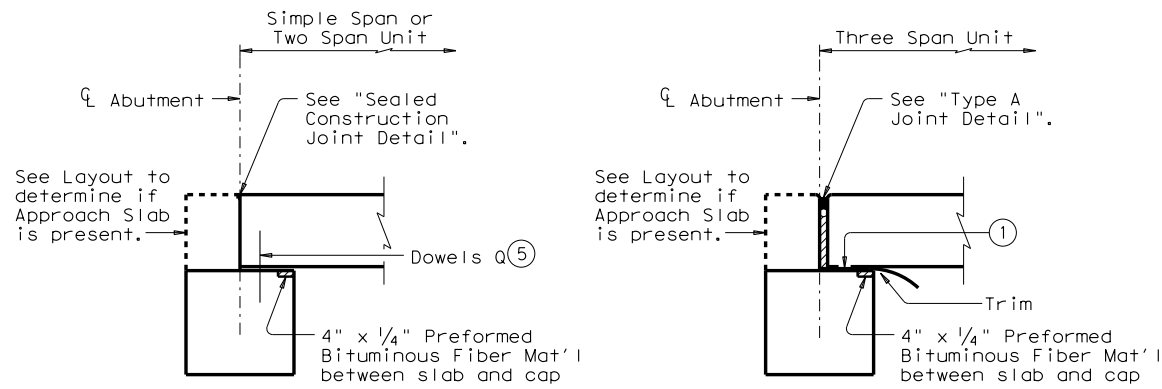
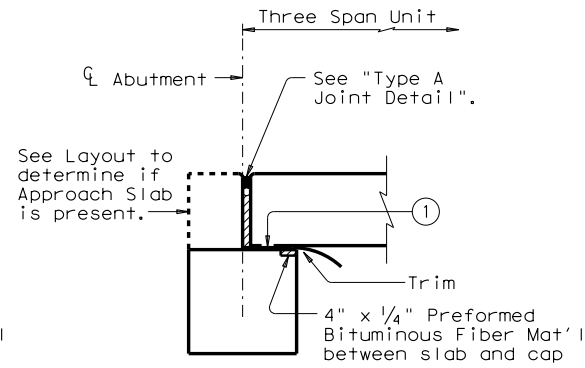


DISCLAIMER: The use of this standard is governed by the "Texas Engineering Practice Act". No warranty of any kind is made by TxDOT for any purpose whatsoever. TxDOT assumes no responsibility for the conversion of this standard to other formats or for incorrect results or damages resulting from its use.

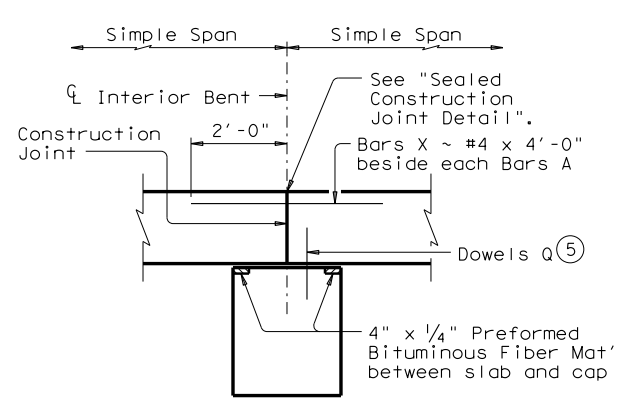
DATE: FILE:



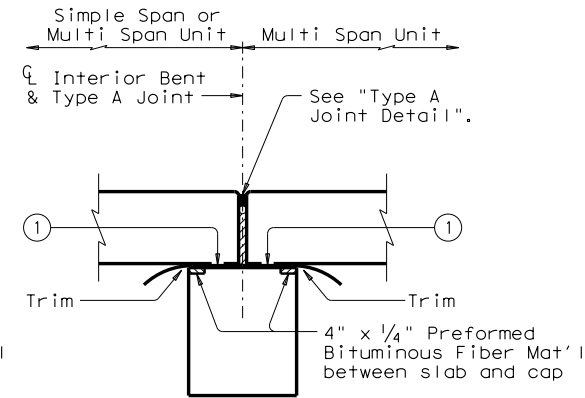
FIXED ABUTMENT



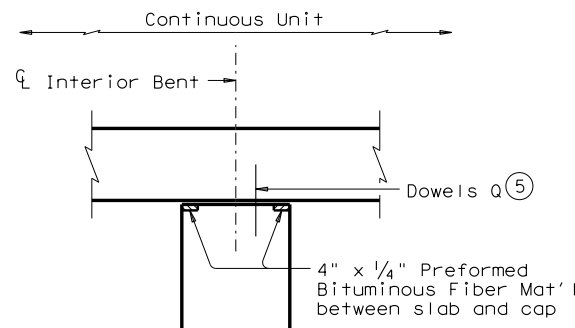
EXPANSION ABUTMENT (9)



FIXED INTERIOR BENT WITH SIMPLE SPANS (8)

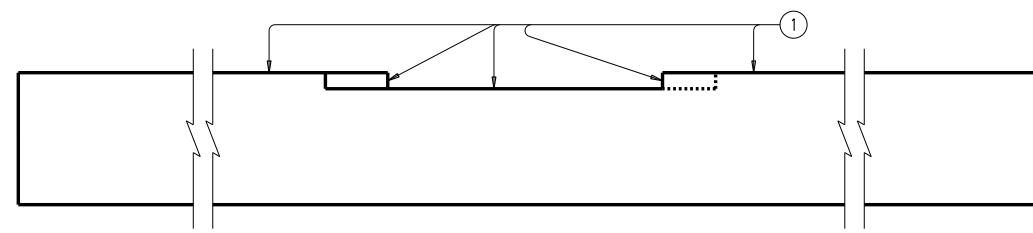


EXPANSION INTERIOR BENT (9)

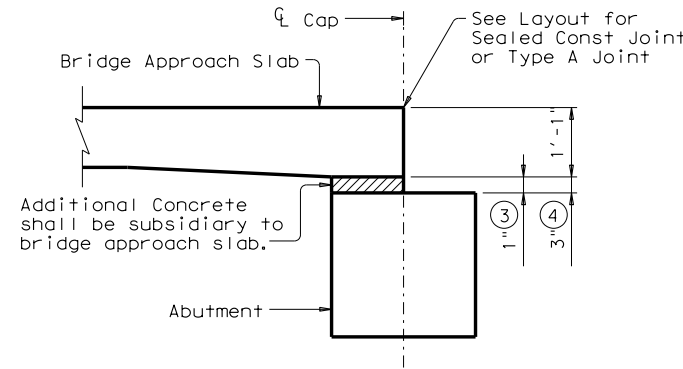


FIXED INTERIOR BENT WITH CONTINUOUS UNIT

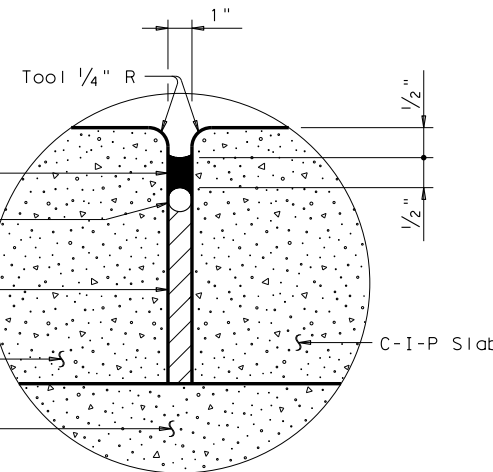
ELEVATION AT FIXED OR EXPANSION BENTS (10)



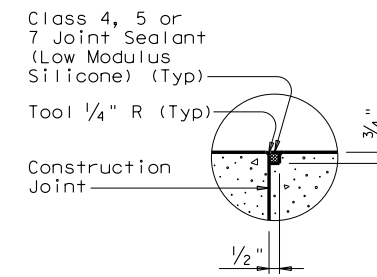
ELEVATION OF CAP



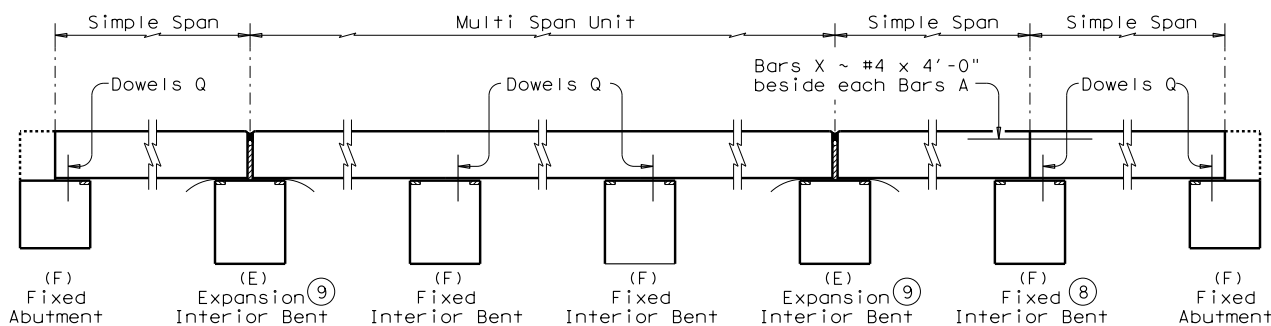
MODIFIED BRIDGE APPROACH SLAB (2)



TYPE A JOINT DETAIL (10)

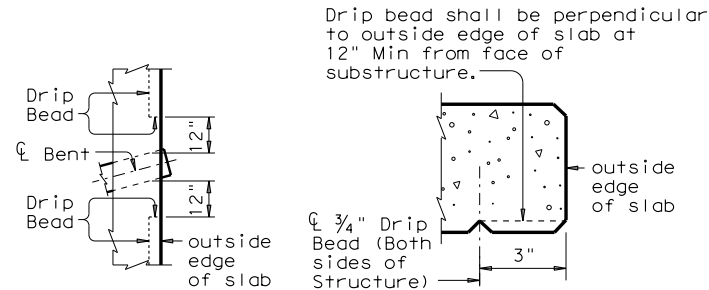


SEALED CONSTRUCTION JOINT DETAIL



EXAMPLE OF FIXED AND EXPANSION BENTS (10)

Showing C-I-P Slab Span with a 16" slab thickness.



PLAN

SECTION

DRIP BEAD DETAILS

ADJUSTMENT IN REINFORCING STEEL QUANTITIES

Rdwy Width	Fixed Condition (8)		Expansion Condition (9)	
	Add Bars X	Deduct Dowel Q	Deduct Dowel Q	Deduct Dowel Q
F+	No.	Weight	No.	Weight
24	30	+80	5	-11
28	34	+91	5	-11
30	36	+96	5	-11
38	44	+118	5	-11
44	50	+134	5	-11

Note: The above quantities are for the Fixed or Expansion Condition over one Bent, and are for information only.

- (1) Smooth trowel finish. Oil top of cap with 60 grade oil and apply heavy coat of powdered graphite. Press down one layer of 30# roofing felt.
- (2) See Layout to determine if Approach Slab is present.
- (3) Use with 14" slab thickness.
- (4) Use with 16" slab thickness.
- (5) See Abutment or Bent details for location of Dowels Q.
- (6) Backer rod shall be 25% larger than joint opening and shall be compatible with the sealant; no reaction shall occur between the rod and the sealant.
- (7) Sealant shall be Class 7 silicone sealant. Install when ambient temperature is between 55°F and 85°F and rising. Engineer to determine allowable hours for sealant application.
- (8) Bars X required only when 2 Simple Spans are used together over a Fixed Interior Bent. The use of 3 consecutive Simple Spans are not recommended nor supported by this standard.
- (9) Omit Dowels Q from Expansion Bents.
- (10) Recommended location of Type A Joints are at the ends of 3 Span Units, ends of 2 Span Units supported by an interior bent, and no farther than 2 Simple Spans from an abutment.

GENERAL NOTES:

Designed according to AASHTO LRFD Specifications. Slab Construction Joints at bent locations shall be sealed with Class 4, 5 or 7 Joint Sealant (Low Modulus Silicone). See "Sealed Construction Joint Detail". Expansion Joints shall be Type A Joints. See "Type A Joint Detail". Sealed Construction Joint or Type A Joint shall be as shown on layout. This standard does not support the use of Transition Bents.

HL93 LOADING

Texas Department of Transportation
 Bridge Division Standard

MISC DETAILS FOR C-I-P CONC SLAB SPANS

CS-MD

FILE: mcs01ste.dgn	DN: TxDOT	CK: TxDOT	DW: TxDOT	CK: TxDOT
©TxDOT March 2009	CONT	SECT	JOB	HIGHWAY
REVISIONS				
	DIST	COUNTY		SHEET NO.