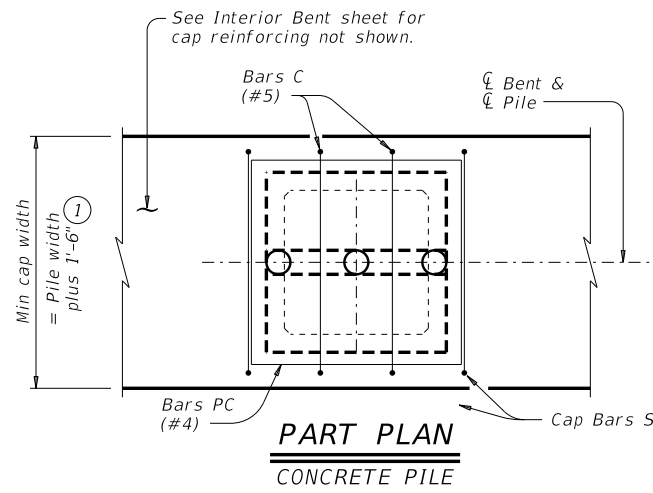
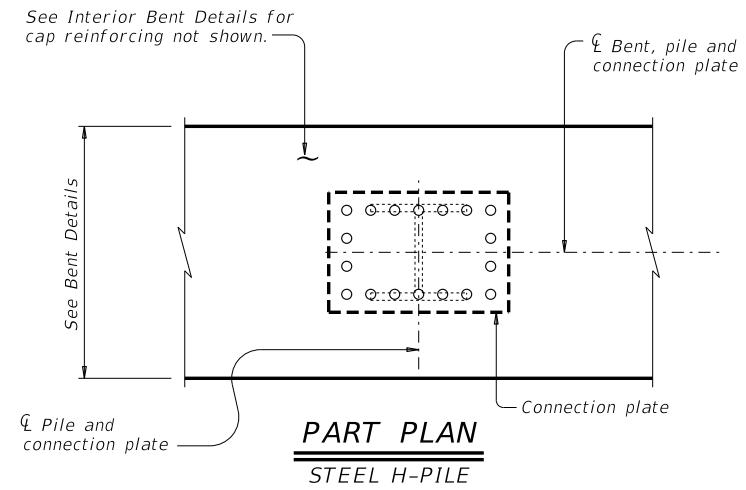


DISCLAIMER: The use of this standard is governed by the "Texas Engineering Practice Act". No warranty of any kind is made by TxDOT for any purpose whatsoever. TxDOT assumes no responsibility for the conversion of this standard to other formats or for incorrect results or damages resulting from its use.

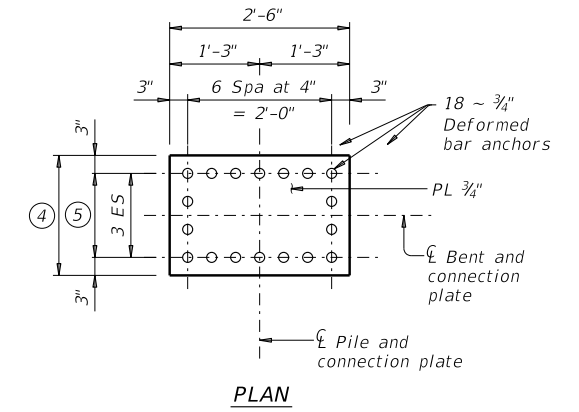


**PART PLAN**  
CONCRETE PILE

- ① Provide wider cap if necessary. Adjust cap Bars S dimensions accordingly. All quantity adjustments are at the Contractor's expense.
- ② 1'-0" (+2 1/2", -0") with 16" and 18" piles;  
1'-6" (+2 1/2", -0") with 20" and 24" piles
- ③ 1'-3" with 16" and 18" piles;  
1'-9" with 20" and 24" piles

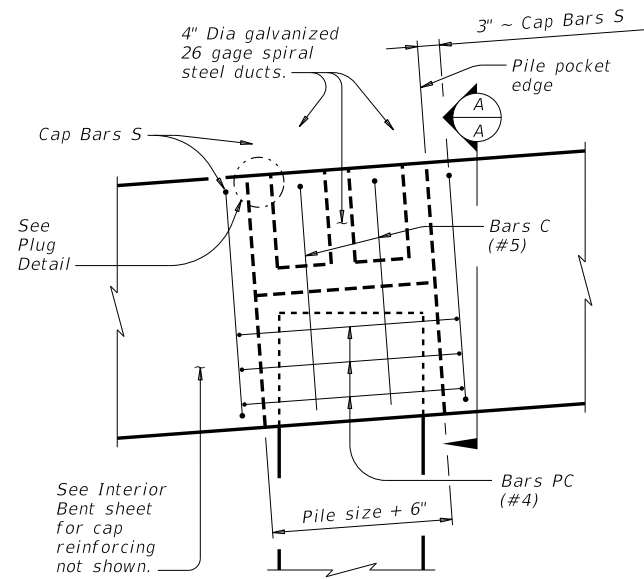


**PART PLAN**  
STEEL H-PILE

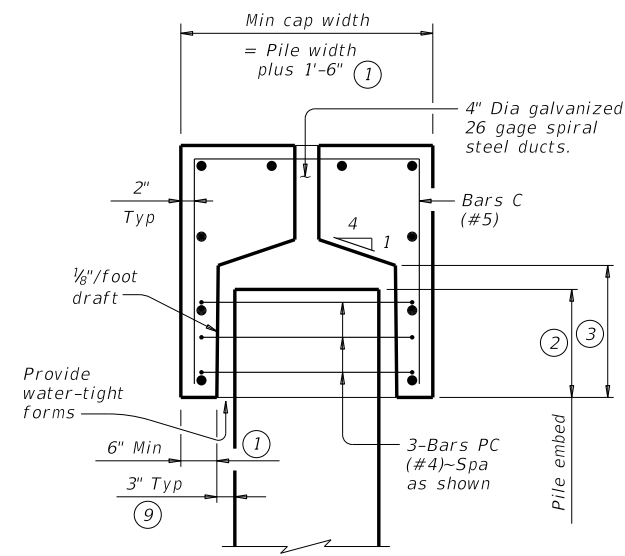


**CONNECTION PLATE DETAIL**

Electric arc end weld deformed bar anchors with complete fusion.

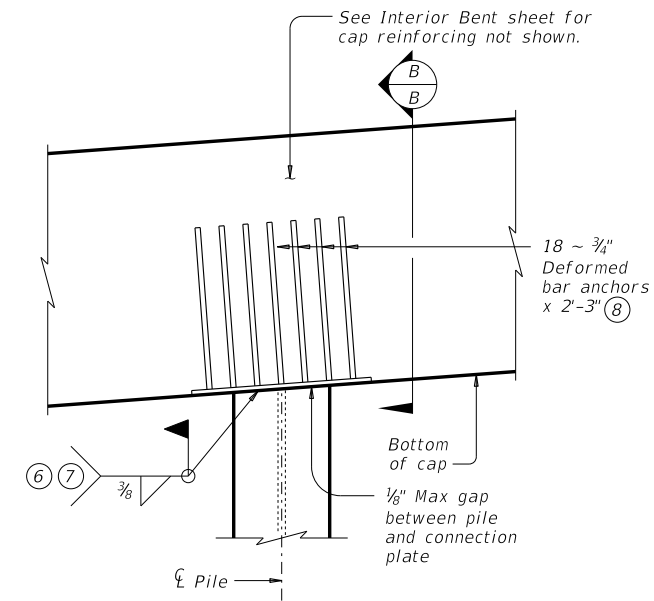


**PART ELEVATION**  
CONCRETE PILE

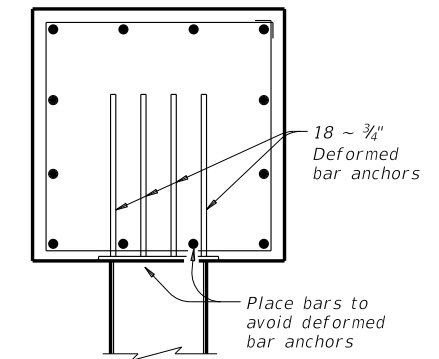


**SECTION A-A**

Showing example cap reinforcing



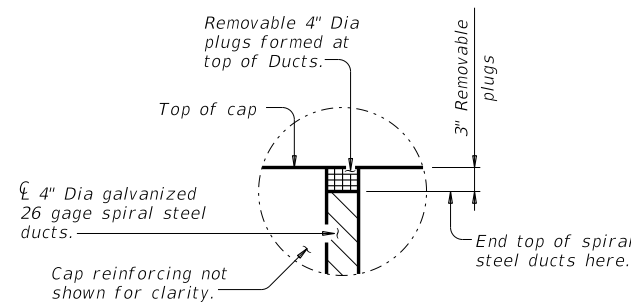
**PART ELEVATION**  
STEEL H-PILE



**SECTION B-B**

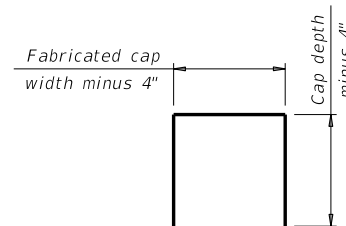
Showing example cap reinforcing

- ④ Pile size plus 6"
- ⑤ Pile size (Example: 1'-2" for HP14)
- ⑥ Increase weld size by amount of gap.
- ⑦ A certified welder is required.
- ⑧ If cap height is less than 2'-9", deformed bar anchor length is 6" less than cap height.
- ⑨ 1" Min between pile and cap pocket for grout placement, typical all sides.



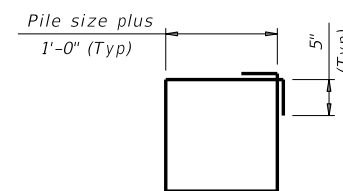
**PLUG DETAIL**

(Plug is used to keep concrete out of ducts during concrete placement. Remove prior to grouting.)



**BARS C (#5)**

2 Required per pile pocket



**BARS PC (#4)**

3 Required per pile pocket

HL93 LOADING

SHEET 1 OF 2



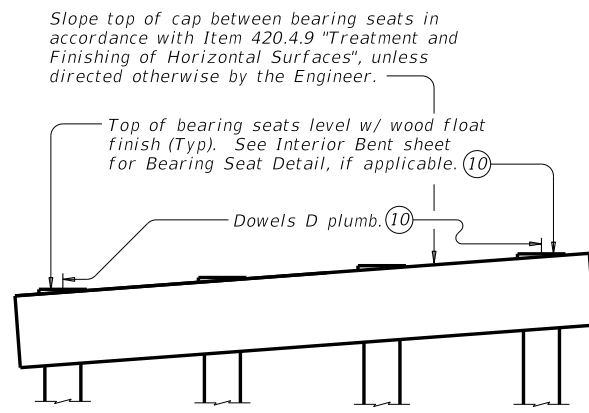
**PRECAST CONCRETE  
BENT CAP OPTION  
FOR CONCRETE PILES  
AND STEEL H-PILES**

**PBC-P**

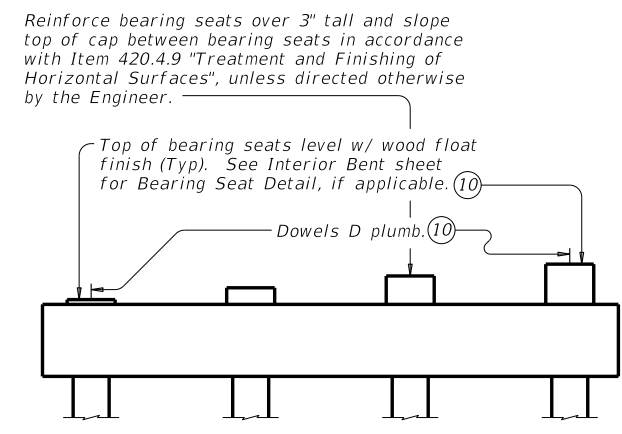
FILE: pbcstd02-21.dgn	DN: TxDOT	CK: TxDOT	DW: TxDOT	CK: TxDOT
©TxDOT April 2019	CONT	SECT	JOB	HIGHWAY
REVISIONS				
12-21: General Notes				
DIST	COUNTY		SHEET NO.	

DATE:  
FILE:

DISCLAIMER: The use of this standard is governed by the "Texas Engineering Practice Act". No warranty of any kind is made by TxDOT for any purpose whatsoever. TxDOT assumes no responsibility for the conversion of this standard to other formats or for incorrect results or damages resulting from its use.



CAP SET AT SLOPE



CAP SET LEVEL

EXAMPLES OF PRECAST BENTS WITH DOWELS D

ⓐ Unless otherwise shown

grout obtains a compressive strength of 2,500 p  
the grout reaches its final required 28 day compressive strength.

Cap-to-Steel Pile Connection:  
After field welding is complete, clean and paint top of pile and connection plate as specified in Item 407.3.2.  
Beams may be set on cap after all cap to pile welds are complete.

**MATERIAL NOTES:**  
Provide a pre-qualified grout from TxDOT's Material Producer List "Cementitious Grouts and Mortars for Miscellaneous Applications", conforming to DMS-4675.  
Provide semi-rigid spirally crimped, corrugated duct of galvanized, cold rolled steel conforming to ASTM A653. Corrugations must have a minimum amplitude of 0.094".  
Grout tubes and forms must be approved prior to grouting.  
Provide deformed bar anchors conforming to ASTM A496 and connection plates conforming to ASTM A36.  
Provide Grade 60 reinforcing steel.

**GENERAL NOTES:**  
Designed in accordance with AASHTO LRFD Bridge Design Specifications.  
The Contractor has the option to provide precast bent caps in accordance with the details shown. No additional payment will be made if the Contractor uses precast caps.  
Submit shop drawings of precast caps for approval prior to construction. Indicate lifting attachments and locations on the shop drawings.  
Precast Concrete Bent Cap Option shown on this standard may require modification for select structure types. See appropriate details elsewhere in plans for these modifications.  
See Interior Bent sheet for details and notes not shown.

Cover dimensions are clear dimensions, unless noted otherwise.  
Reinforcing bar dimensions shown are out-to-out of bar.

DATE:  
FILE:



**PRECAST CONCRETE  
BENT CAP OPTION  
FOR CONCRETE PILES  
AND STEEL H-PILES**

**PBC-P**

FILE: pbcstd02-21.dgn	DN: TxDOT	CK: TxDOT	DW: TxDOT	CK: TxDOT
©TxDOT April 2019	CONT	SECT	JOB	HIGHWAY
REVISIONS				
12-21: General Notes				
DIST		COUNTY		SHEET NO.